

COMMERCIAL LAND JALAN JOMBANG RAYA, CIPUTAT SOUTH TANGERANG



COMMERCIAL

1. Fresh Market Emerald Bintaro
2. Indy Bintaro Office Park
3. Trans Snow World Bintaro
4. Bintaro Jaya Modern Market
5. Hari-hari Pasar Swalayan Bintaro
6. Bintaro Jaya Xchange Mall
7. Sudimara Forestwalk
8. Djoglo Ageng

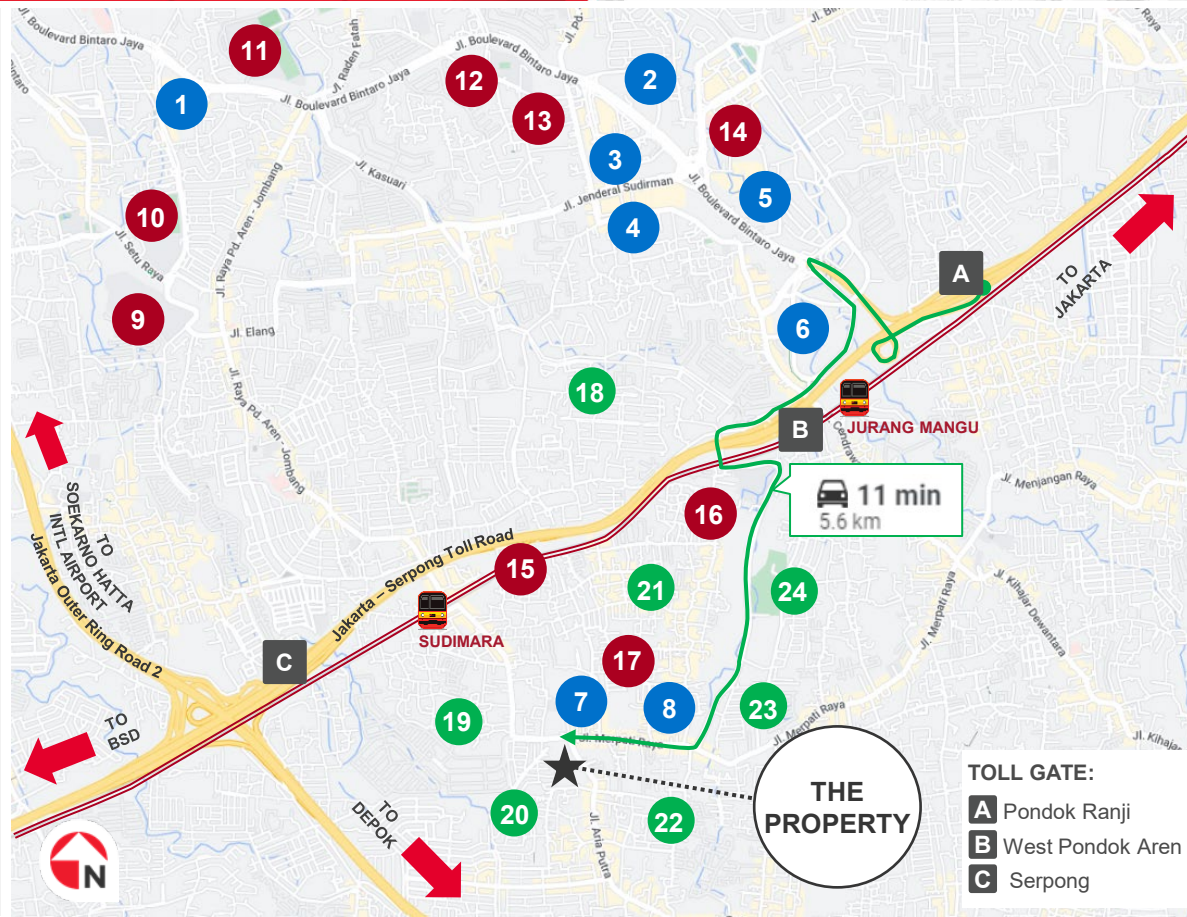
PUBLIC FACILITIES

9. Jakarta Japanese School
10. Global Jaya School
11. British School Jakarta
12. SMAK Penabur Bintaro Jaya
13. Bina Medika Bintaro Hospital
14. Premier Bintaro Hospital
15. Rest Area KM 7
16. Pembangunan Jaya University
17. Tanah Tingal School

RESIDENTIAL

18. Puri Bintaro Sektor 9
19. Villa Gunung Lestari
20. Villa Jombang Baru
21. Villa Mutiara
22. Grand Bintaro Garden
23. U – Ville
24. U – House

Toll Road KRL Line



TOLL GATE:

- A Pondok Ranji
- B West Pondok Aren
- C Serpong

LAND PLOT



PROPERTY DESCRIPTION

- The Property is a commercial plot situated opposite Sudimara Forestwalk Apartment Complex.
- The Property is 5.6 km or 11 min drive from exit toll Pondok Ranji.
- Located ± 800 m from Sudimara Station, ± 1.2 km from Serpong Toll Gate, ± 1.5 km from Pembangunan Jaya University, ± 2.2 km Bintaro Jaya Xchange, ± 2.7 km from Jakarta Japanese School, ± 3 km from Premier Bintaro Hospital, ± 3 km from Global Jaya School, and ± 3.6 km from British School Jakarta.

LAND DETAILS

LAND AREA	± 2.2 Ha
LAND TITLE	SHM & SHGB
ZONING	Commercial
DEVELOPMENT PARAMETER	Site Coverage: 60% Plot Ratio: 3:0
ASKING PRICE	IDR 10 Mio psm
LOCATION	Google Maps

For more information
please contact:



Mina Ondang
Director

+ (62) 811 820 9500
Mina.Ondang@ap.cushwake.com

COMMERCIAL LAND
JALAN JOMBANG RAYA, CIPUTAT
SOUTH TANGERANG



THE
PROPERTY



View from Jl. Jombang Raya

THE
PROPERTY



View from Jl. Aria Putra