

# 1388 KIFER ROAD

SUNNYVALE | ±88,924 SF



**TODD BEATTY**

todd.beatty@cushwake.com  
1 408 615 3418  
LIC #00976940

**STEVE HORTON**

steve.horton@cushwake.com  
1 408 615 3412  
LIC #01127340

**DREW ARVAY**

drew.arvay@cushwake.com  
1 408 436 3647  
LIC #00511262

**KELLY YODER**

kelly.yoder@cushwake.com  
1 408 615 3427  
LIC #01821117



**CUSHMAN &  
WAKEFIELD**



OPEN BREAK ROOM WITH ADJACENT PRIVATE OUTDOOR AMENITY AREA



TWO-STORY LOBBY





SECURED AMENITY AREA



## 1388 KIFER ROAD



OUTDOOR DINING & MEETING SPACE



EXCEPTIONAL GLASS LINE

# 1388 KIFER ROAD

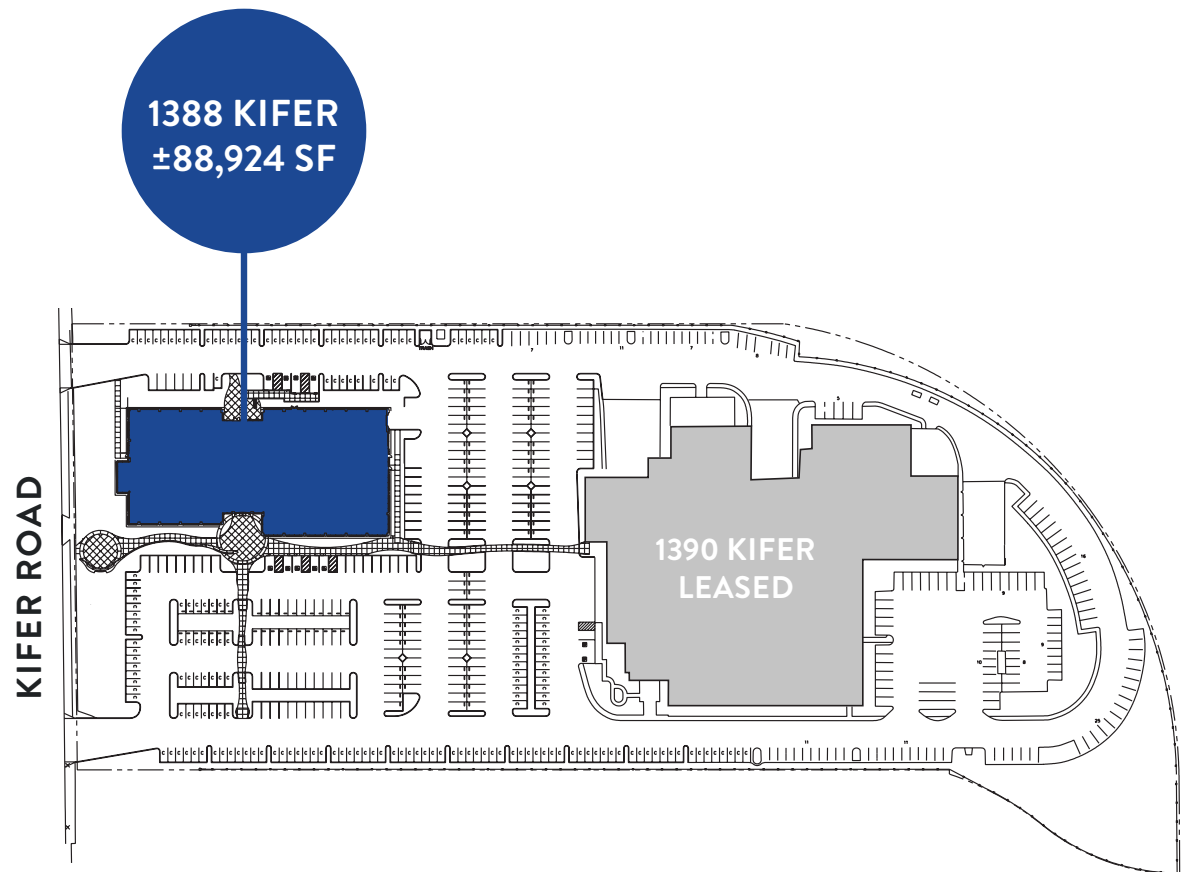


16' CLEAR HEIGHT ON GROUND FLOOR

# 1388 KIFER ROAD

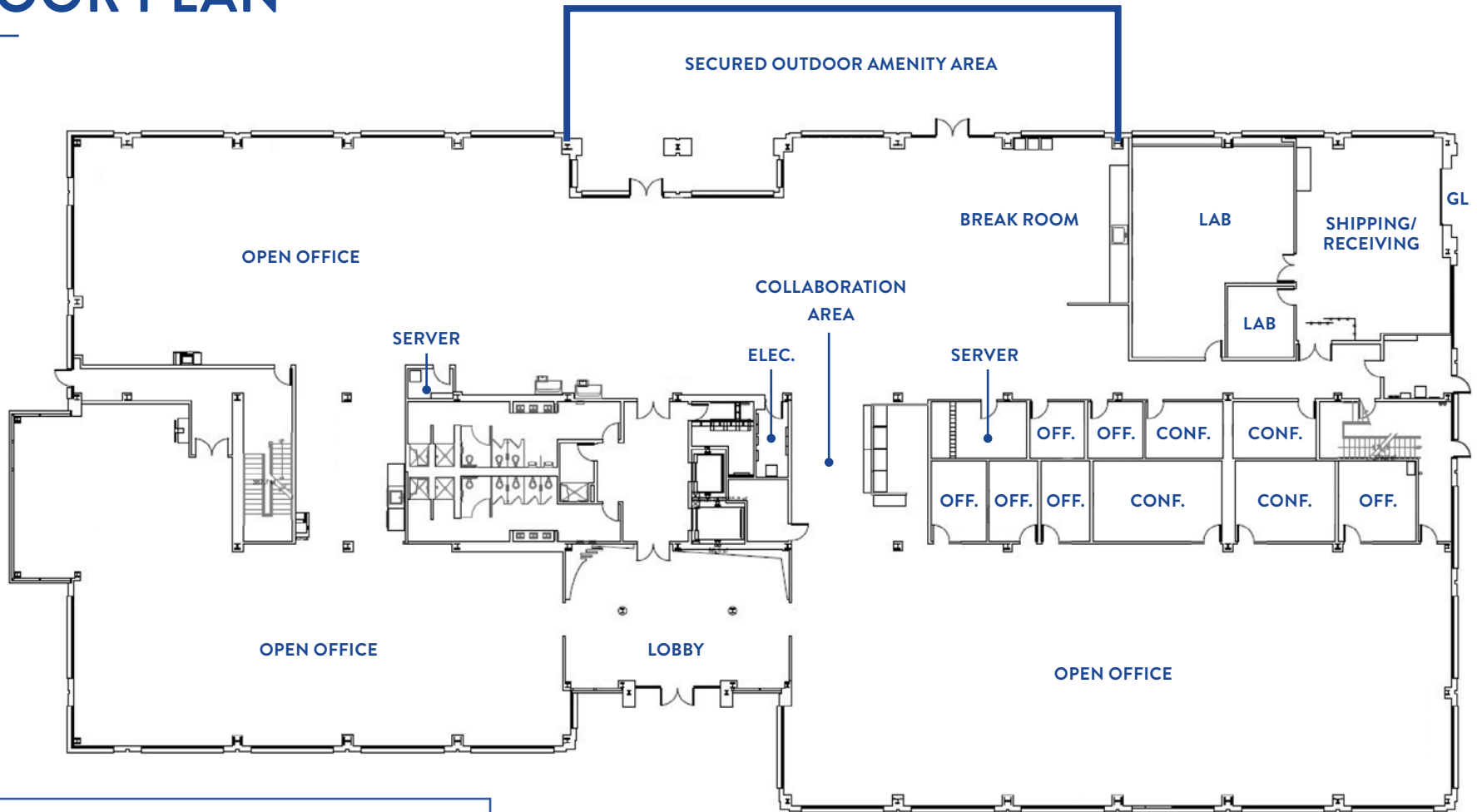
## HIGHLIGHTS

- ±88,924 SF Available
- Market Ready Interiors
- 11' Drop Ceiling with 16' Clear Height on the Ground Floor
- Open Breakroom with Adjacent Secured Outdoor Amenity Area
- Showers
- 2 Elevators (1 with Freight Capacity)
- Grade Level Loading
- Back-Up Generator:
  - 300kW WQ w/ 417 HP Motor, 550 Gallon Tank, 600 Amp Transfer Switch
- ±3.6/1,000 Parking
- 2,000 Amps @ 277/480 Volts
- Monument & Building Signage
- Multiple Fiber Providers



# 1388 KIFER ROAD

## FLOOR PLAN

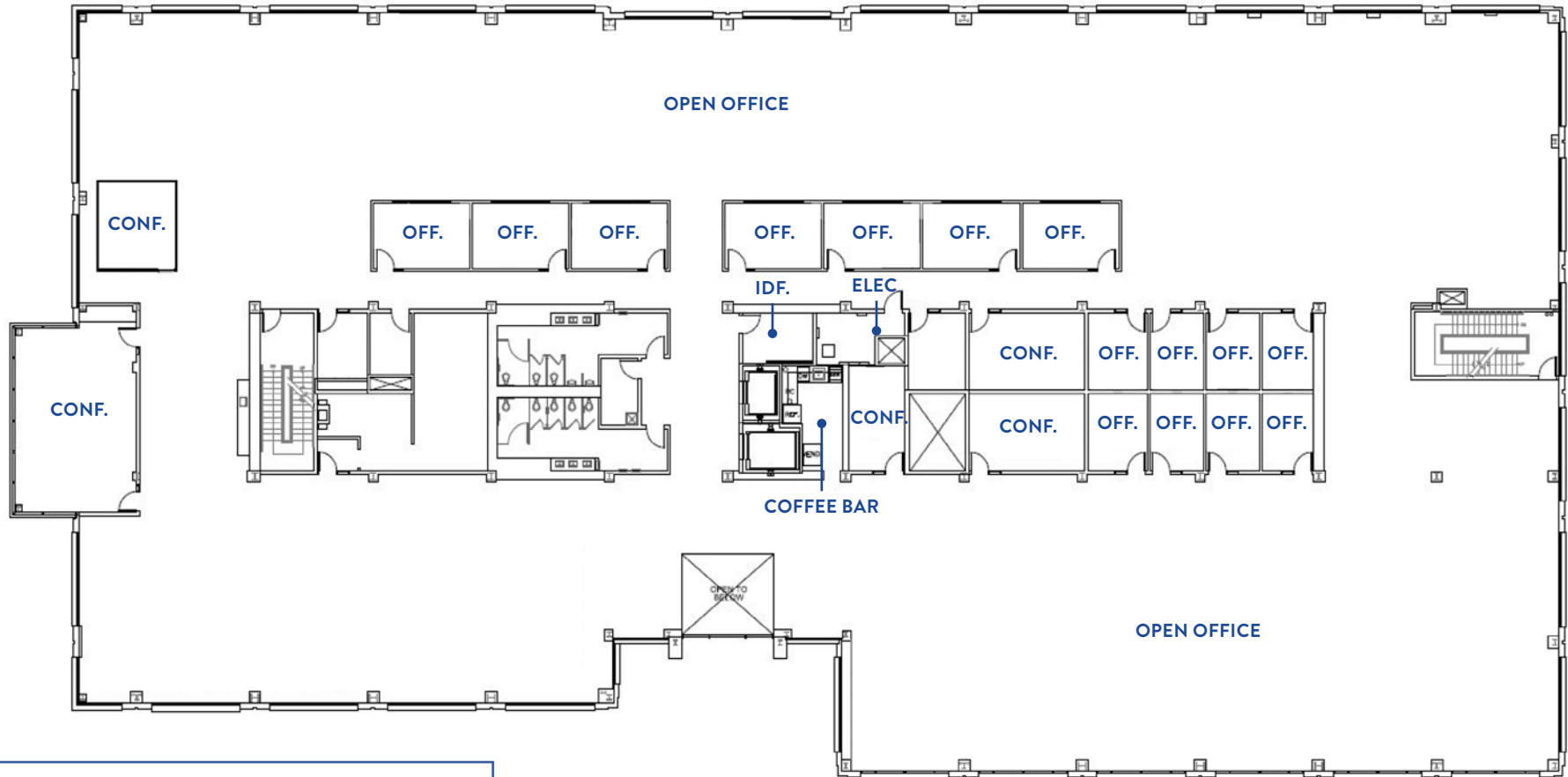


### FIRST FLOOR: ±29,321 SF

- 6 Offices
- 4 Conference Rooms
- Collaboration Space
- Break Room

# 1388 KIFER ROAD

## FLOOR PLAN

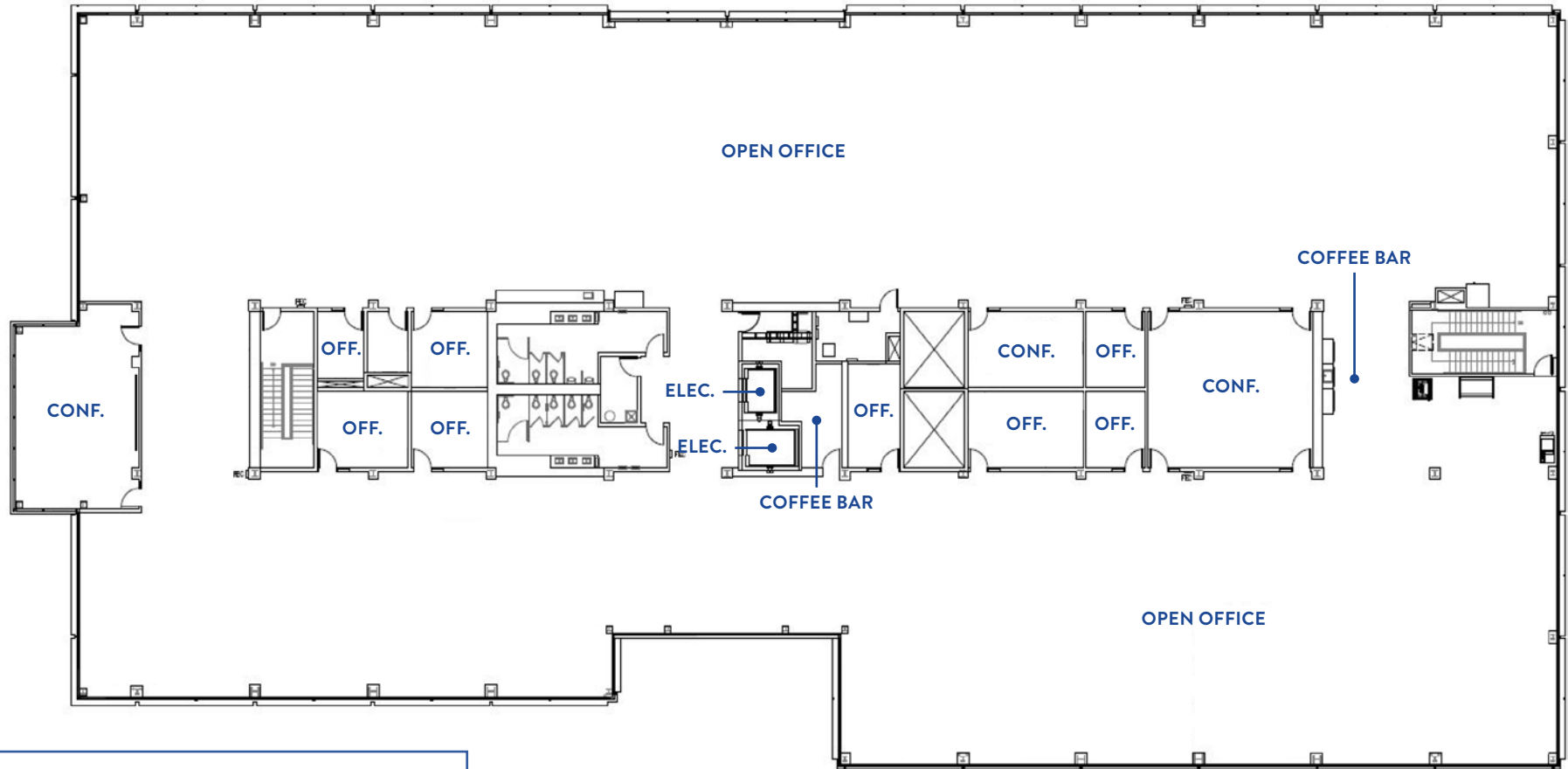


### SECOND FLOOR: ±29,695 SF

- 15 Offices
- Coffee Bar
- 5 Conference Rooms

# 1388 KIFER ROAD

## FLOOR PLAN



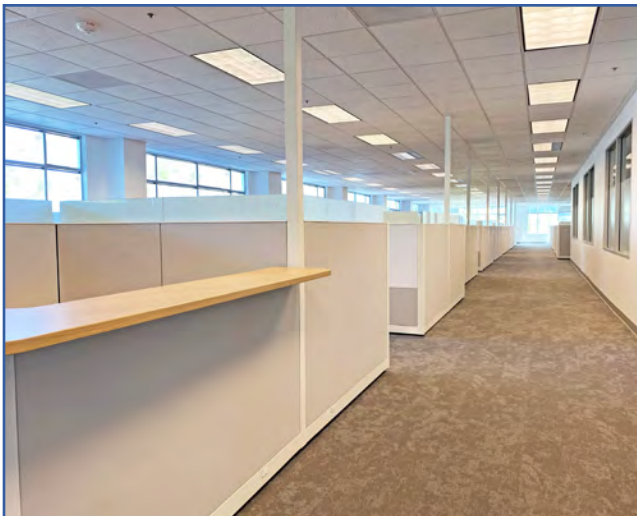
### THIRD FLOOR: ±29,904 SF

- 8 Offices
- 2 Coffee Bars
- 3 Conference Rooms



# 1388 KIFER ROAD

## HYPOTHETICAL FLOOR PLANS



### FIRST FLOOR

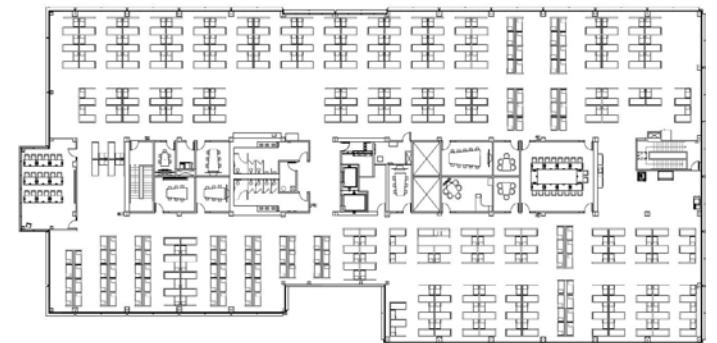
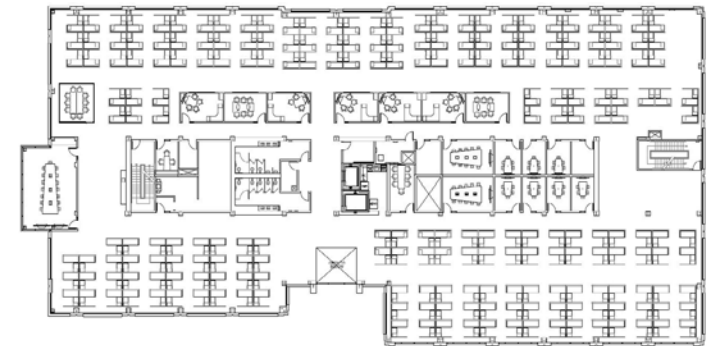
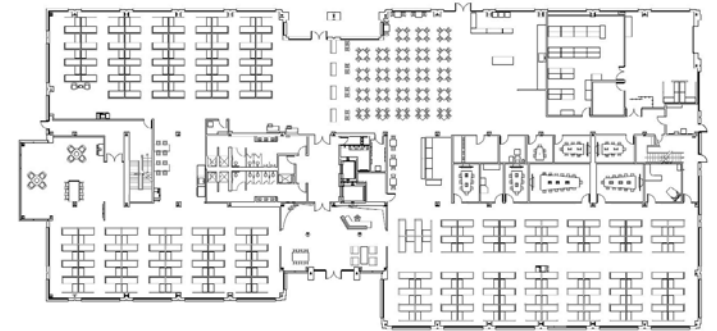
- 158 Cubicles
- 6 Offices
- 4 Conference Rooms
- Break Room

### SECOND FLOOR

- 214 Cubicles
- 15 Offices
- 5 Conference Rooms
- Coffee Bar

### THIRD FLOOR

- 187 Cubicles
- 102 Benches
- 8 Offices
- 3 Conference Rooms
- 2 Coffee Bars



# 1388 KIFER ROAD

## BAY CLUB SANTA CLARA AMENITIES



- WINE BAR & 2 RESTAURANTS
- MASSAGE THERAPY
- BAYSPORT PHYSICAL THERAPY
- CHILDCARE & YOUTH PROGRAMS
- LOCKER ROOMS & LAUNDRY

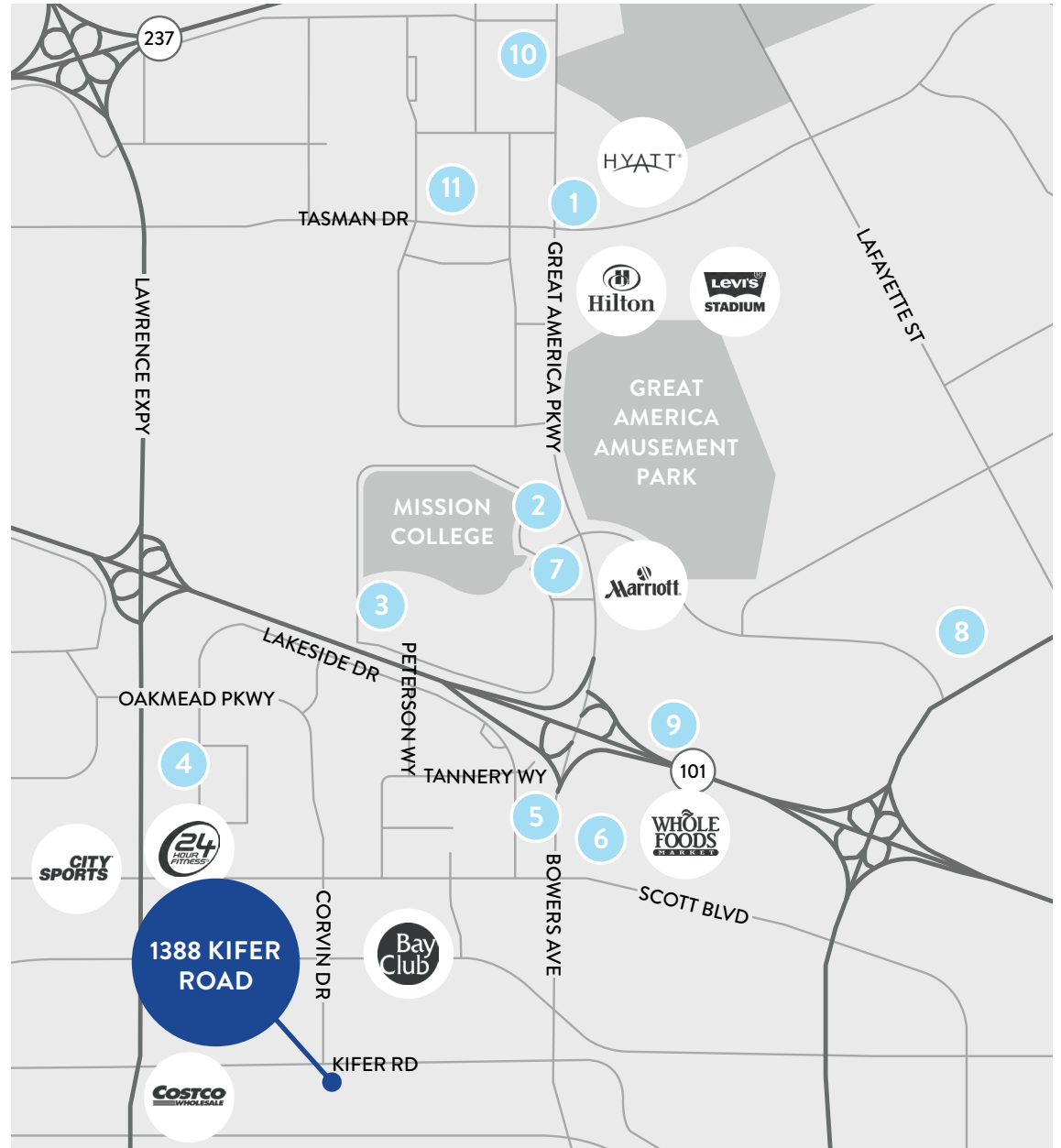
- 3 HEATED SWIMMING POOLS
- PICKLEBALL
- SQUASH COURTS
- BADMINTON
- 3 FULL SIZE BASKETBALL COURTS

- GROUP EXERCISE
- PERSONAL FITNESS TRAINING
- INDOOR SOCCER
- VOLLEYBALL

# 1388 KIFER ROAD

## AMENITY & NEIGHBORHOOD MAP

- 1 Hyatt Regency & Convention Center  
Truya Sushi  
Evolution Cafe & Bar  
Peet's Coffee
- 2 Tea Spot Cafe  
Feride's Bakery  
HiroNori Ramen  
Cafe Falafel  
Pizza My Heart  
Iguanas Burittozilla  
House of Bagels  
Togo's Sandwiches
- 3 **MERCADO**  
In-N-Out  
Tomatina  
Subway  
Jamba Juice  
Starbucks  
SmokeEaters  
Krispy Kreme  
World Wrapps  
Pho Hoa Noodle Soup
- 4 Una Mas  
Merit Vegan  
Bagel Place Cafe  
Tasty Subs & Pizza  
Chaats & Curry  
Myzen Raman  
Happy Lemon  
St. Johns Bar & Grill  
Mission City Cafe  
Falafel Bite  
Luv Pho  
Pad Thai Cuisine  
Panera Bread  
24 Hour Fitness  
City Sports  
TOGO's
- 5 AC Marriott Hotel  
Town Place Suites  
The Plaza Suites  
Embassy Suites
- 6 **SANTA CLARA SQUARE**  
Whole Foods Market  
CorePower Yoga  
Chipotle  
Gong Cha  
Kumar's  
Pacific Catch  
Puesto  
Tender Greens  
Fleming's Steakhouse  
Lula's Chocolates  
Barebottle Brewing Co.  
Opa! Santa Clara  
Floodcraft Taproom  
Silverlake Ramen  
Il Fornaio  
Starbucks  
The Halal Guys
- 7 Kish Indian Kitchen & Bar  
IHOP
- 8 Starbucks  
Element Hotel  
Orange Theory Fitness
- 9 Pedro's Mexican  
Birk's
- 10 Loop Neighborhood Market  
TOGO's
- 11 1Oz Coffee



# 1388 KIFER ROAD

## TRANSPORTATION MAP



**LESS THAN 1 MILE  
(5 MINUTE BIKE RIDE) TO  
LAWRENCE CALTRAIN  
STATION**

**26 MINUTES TO SAN JOSE  
DIRIDON CALTRAIN STATION  
FROM LAWRENCE CALTRAIN  
STATION**

**73 MINUTES TO  
SAN FRANCISCO FROM  
LAWRENCE CALTRAIN  
STATION**

# 1388 KIFER ROAD

SUNNYVALE | ±88,924 SF

**TODD BEATTY**

todd.beatty@cushwake.com  
1 408 615 3418  
LIC #00976940

**STEVE HORTON**

steve.horton@cushwake.com  
1 408 615 3412  
LIC #01127340

**DREW ARVAY**

drew.arvay@cushwake.com  
1 408 436 3647  
LIC #00511262

**KELLY YODER**

kelly.yoder@cushwake.com  
1 408 615 3427  
LIC #01821117



[VIEW SITE SPECIFIC COVID-19 PREVENTION PLAN](#)

Cushman & Wakefield Copyright 2021. No warranty or representation, express or implied, is made to the accuracy or completeness of the information contained herein, and same is submitted subject to errors, omissions, change of price, rental or other conditions, withdrawal without notice, and to any special listing conditions imposed by the property owner(s). As applicable, we make no representation as to the condition of the property (or properties) in question.