



FOR SALE/LEASE

CVS Land

7117 Maple Street / Omaha, NE 68104



**Approx. 2.05 Acres**

**Sale Price: Contact Listing Agent**

**Lease Rate: Contact Listing Agent**

Entire block available on the SE corner of 72nd and Maple Street. Great opportunity for retail or mixed use development with a traffic count of 43,176 cars per day with approximately 360' of frontage along 72nd Street.

**Justin Riviera**  
Senior Associate  
(402) 548 4064  
justin.riviera@lundco.com

450 Regency Parkway, Suite 200  
Omaha, NE 68114  
+1 402 393 8811  
**lundco.com**

*Independently Owned and Operated / A Member of the Cushman & Wakefield Alliance*

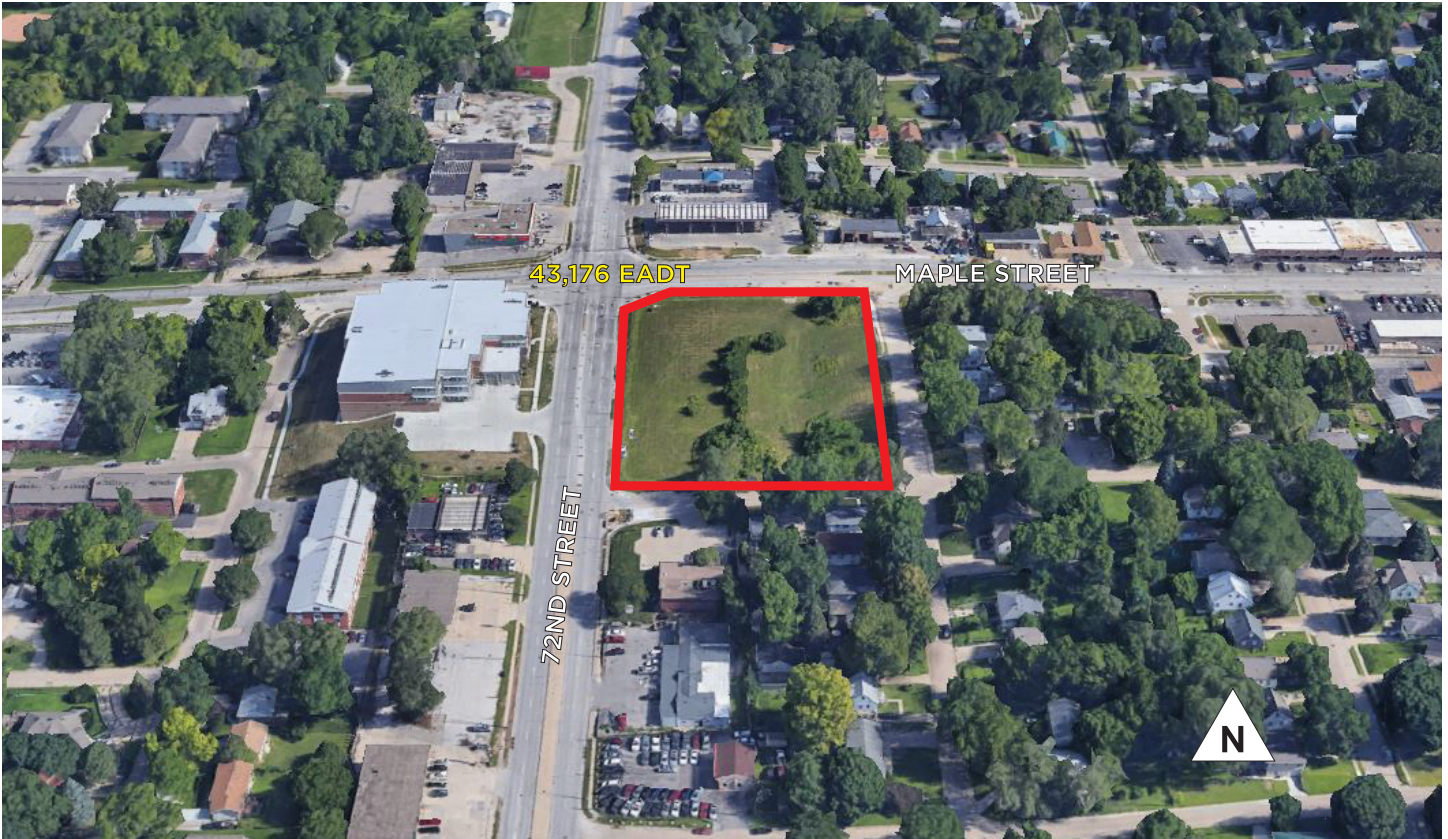
Cushman & Wakefield Copyright 2018. No warranty or representation, express or implied, is made to the accuracy or completeness of the information contained herein, and same is submitted subject to errors, omissions, change of price, rental or other conditions, withdrawal without notice, and to any special listing conditions imposed by the property owner(s). As applicable, we make no representation as to the condition of the property (or properties) in question.



FOR SALE/LEASE

CVS Land

7117 Maple Street / Omaha, NE 68104



### Availability

Lease Rate	Contact Listing Agent
Sale Price	Contact Listing Agent
Gross Acres	Approx. 2.05
Gross SF	89,625
Zoning	CC-ACI
Lot Dimensions	Approx. 360' x 250'
Utilities	To the site
Flood Plain	No
Traffic Counts	43,176 EADT

### Demographics

	Population	Median HH Income	No. of Households
1-mile	15,669	\$53,588	6,814
3-mile	122,895	\$55,960	51,867
5-mile	282,078	\$55,307	117,449

*Independently Owned and Operated / A Member of the Cushman & Wakefield Alliance*

Cushman & Wakefield Copyright 2018. No warranty or representation, express or implied, is made to the accuracy or completeness of the information contained herein, and same is submitted subject to errors, omissions, change of price, rental or other conditions, withdrawal without notice, and to any special listing conditions imposed by the property owner(s). As applicable, we make no representation as to the condition of the property (or properties) in question.

