



MEDICAL AND PROFESSIONAL OFFICE SPACES FOR LEASE
5655 HUDSON DRIVE, HUDSON, OHIO 44236

HIGHLIGHTS

- Naming and building signage rights available
- Two suites with dedicated entrances off building's exterior that significantly increase the visibility of those occupiers
- Monument signage on Hudson Drive and Darrow Road provides great visibility for major tenants
- Prominent medical office building located in the heart of Hudson's professional district
- Adjacent and access to thriving wellness center & spa with pool, daycare on-site, exercise classes and personal training
- Flexible suite sizes that will fit any medical practice needs
- Drop-off/pick-up driveway located at front of building for ease of access

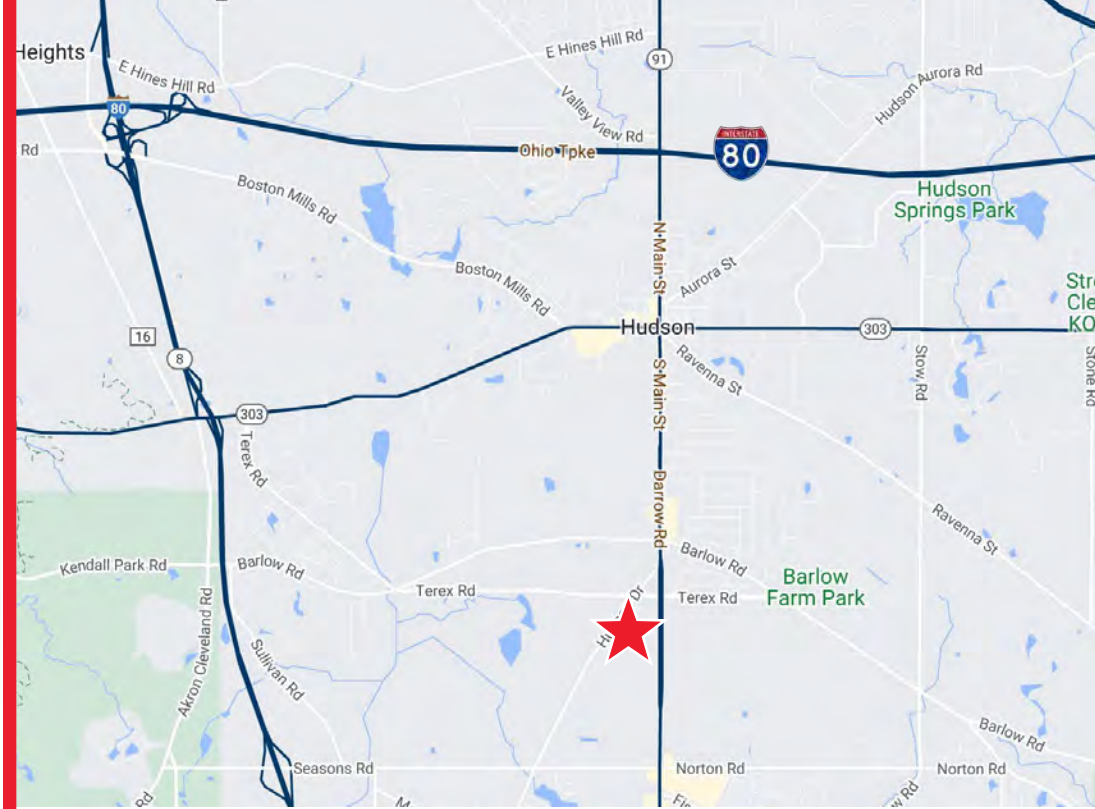
AVAILABILITY

Suite	Size	Max Contiguous
101	8,707 SF	8,707 SF
110	5,485 SF	9,680 SF
130	4,195 SF	9,680 SF
200	13,111 SF	26,113 SF
205	2,314 SF	26,113 SF
*210	8,644 SF	*26,113 SF
215	1,218 SF	26,113 SF
220	826 SF	26,113 SF
**310	3,411 SF	3,411 SF
305	1,792 SF	1,792 SF
315	8,714 SF	8,714 SF

*Modernized general office space

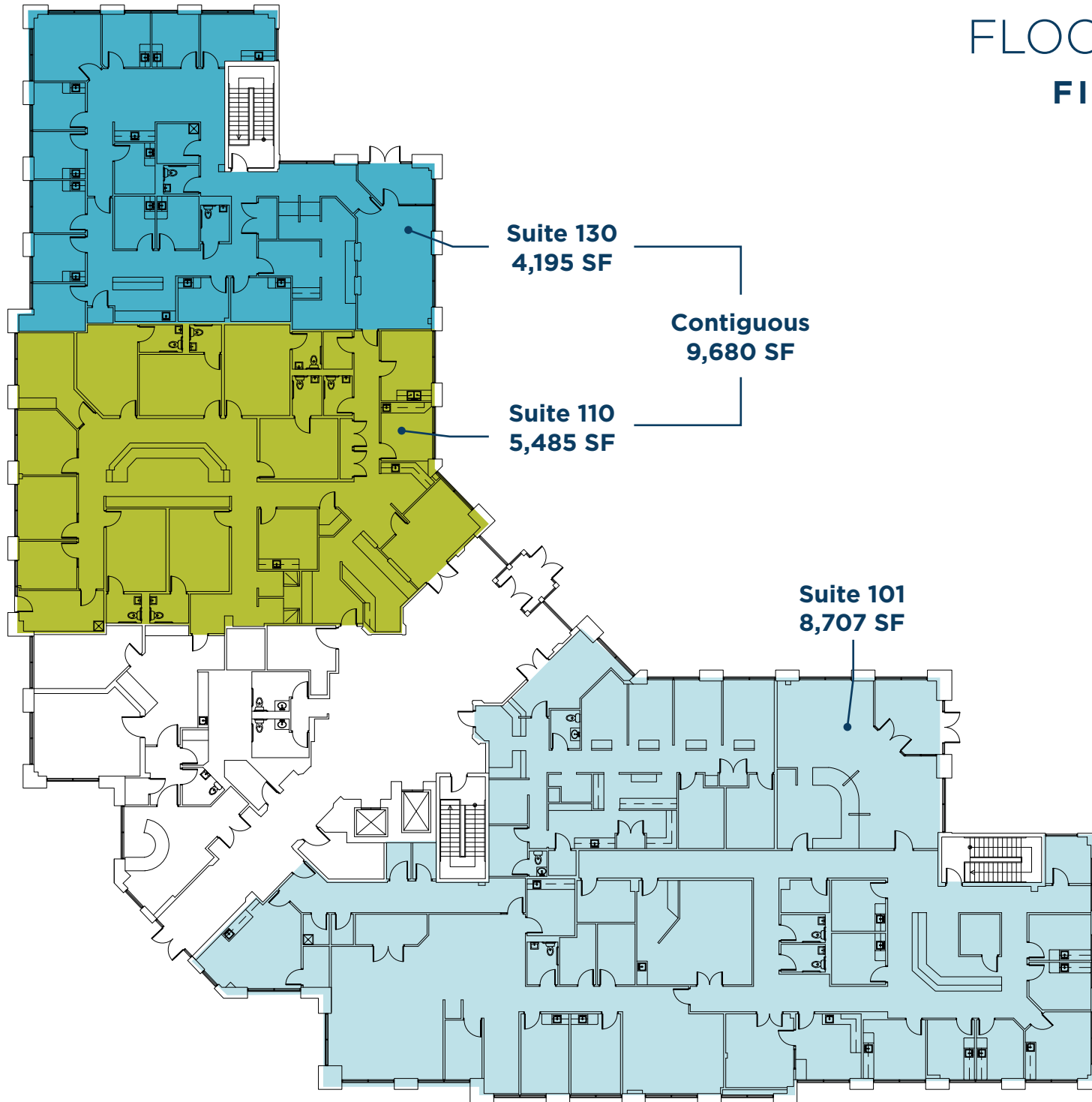
**Recently available dental suite

LEASE RATE: Negotiable



FLOOR PLANS

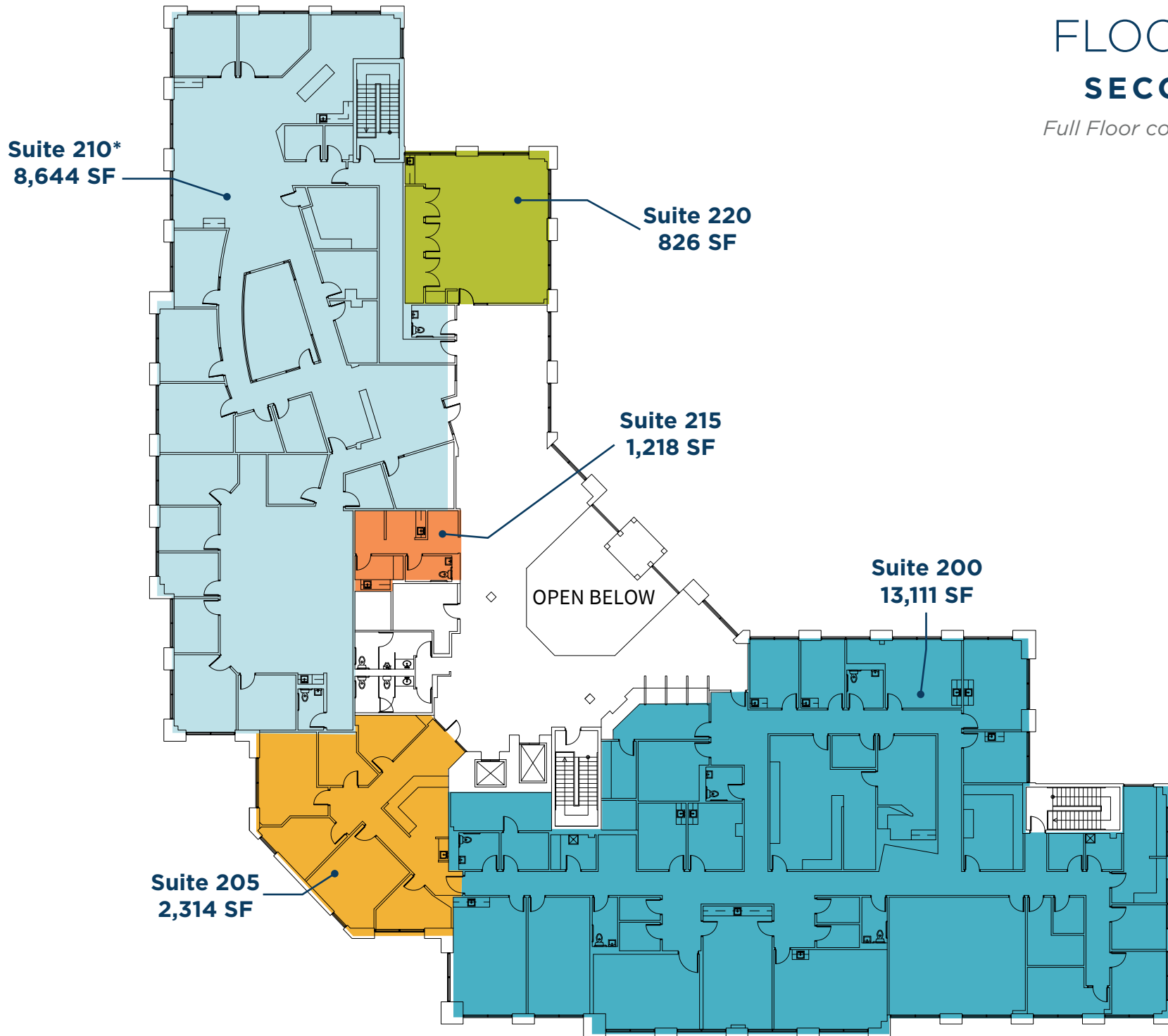
FIRST FLOOR



FLOOR PLANS

SECOND FLOOR

Full Floor contiguous to 26,113 SF



**Modernized general office space*



FLOOR PLANS

THIRD FLOOR

Suite 310: Modernized, newly available dental suite with upgraded finishes



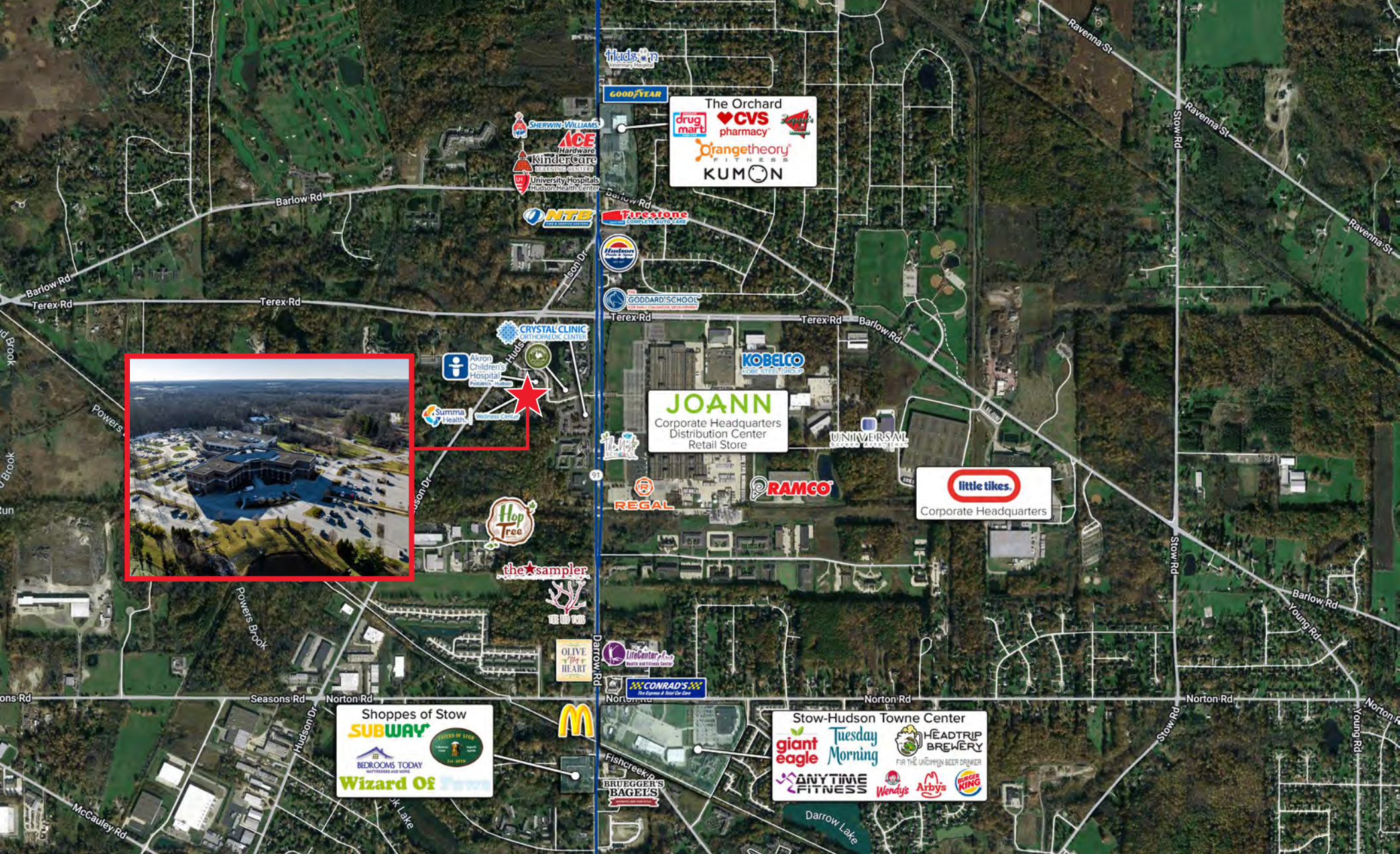
Suite 305
1,792 SF

Suite 310
3,411 SF

Suite 315
8,714 SF

[Take Virtual Tour](#)





RENEE HARDMAN
 Associate
 +1 216 525 1462
 rhardman@crescorealestate.com

ERIC SCHREIBMAN
 Vice President
 +1 216 525 1471
 eschreibman@crescorealestate.com

Cushman & Wakefield | CRESCO
 6100 Rockside Woods Blvd, Suite 200
 Cleveland, OH 44131
 crescorealestate.com

