

FOR SALE

Reimer Road at Deacon's Corner

Industrial Land Available

Murray Goodman
Senior Vice President & Principal
T 204 928 5009
C 204 990 4800
murray.goodman@cwstevenson.ca

Stephen Sherlock
Vice President
T 204 928 5011
C 204 799 5526
steve.sherlock@cwstevenson.ca



TRANS-CANADA HWY
REIMER RD



FOR SALE

Reimer Road Land



(+/-) 4.13 Acres Available

PROPERTY HIGHLIGHTS

- Located in the Deacon's Corner, a highly visible and recognizable location
- Six 0.69 Acre commercial lots
- Approaches installed and drainage easements in place
- Rare opportunity to acquire high exposure commercial land
- No city of Winnipeg Business Taxes
- Gas and Hydro to the lot line; holding tanks and wells for sewer and water
- Highway Commercial Zoning

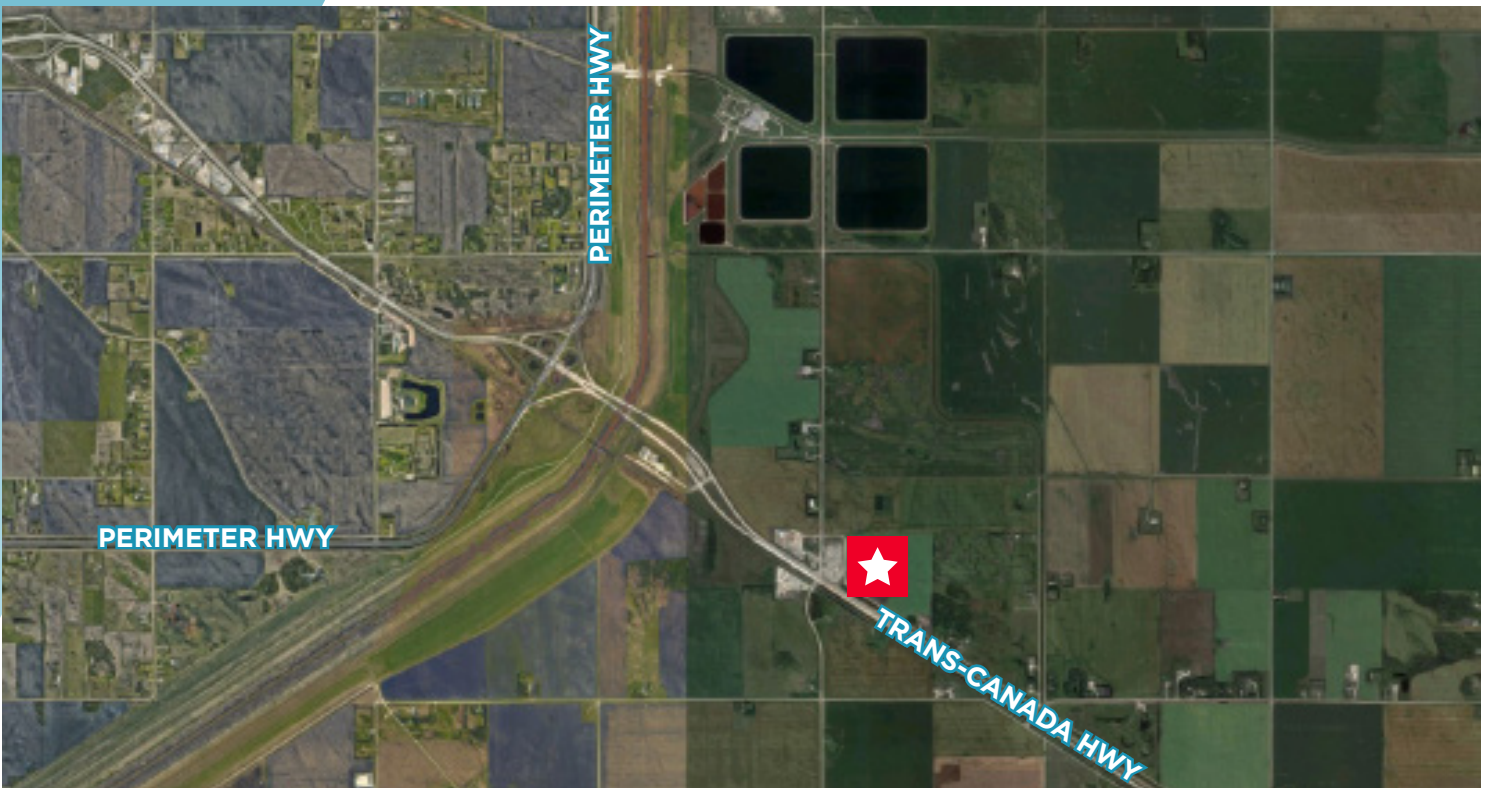
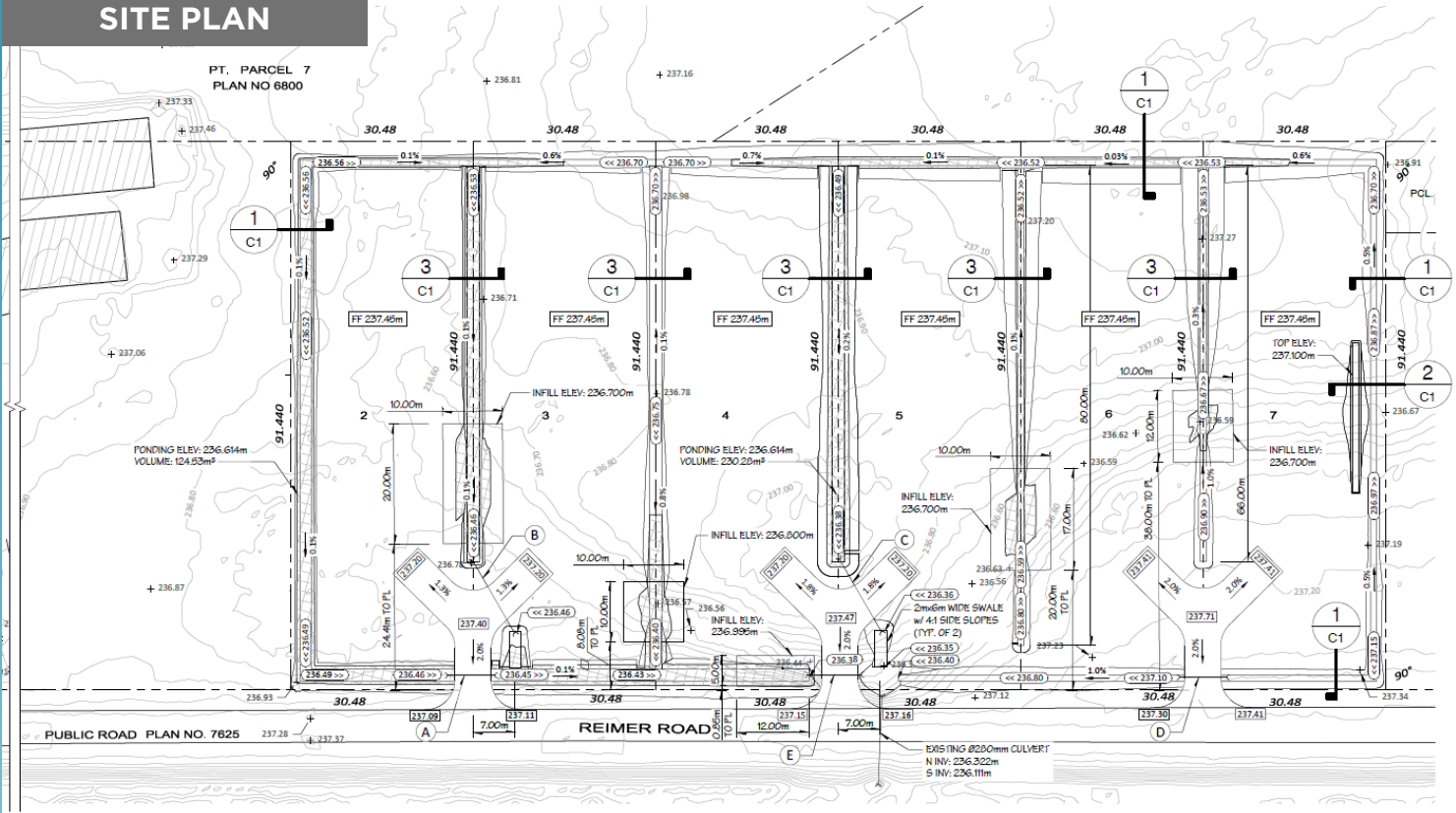
Sale Price: \$217,350 (per lot)

FOR SALE

Reimer Road Land



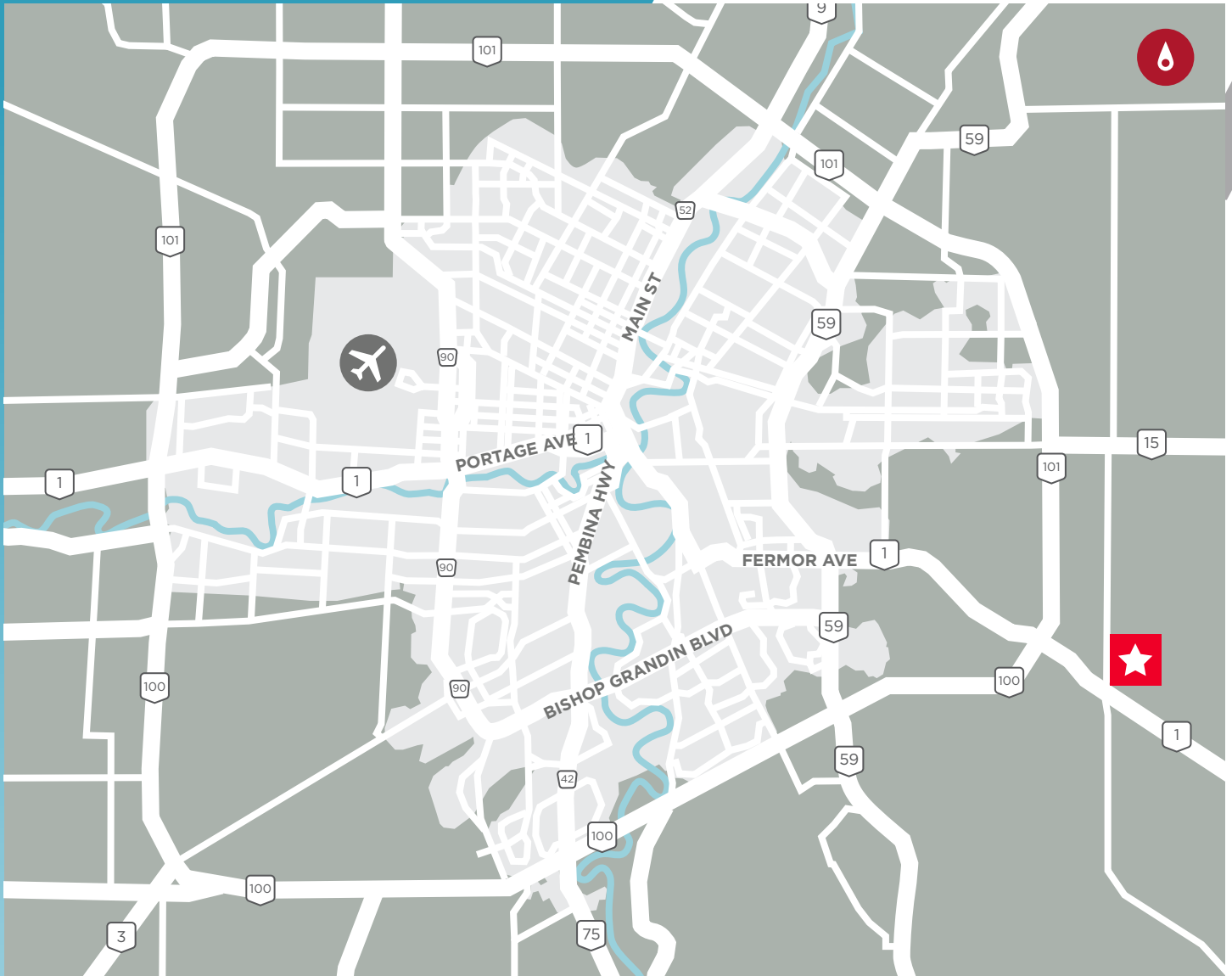
SITE PLAN



Independently Owned and Operated / A Member of the Cushman & Wakefield Alliance ©2022 Cushman & Wakefield. All rights reserved. The information contained in this communication is strictly confidential. This information has been obtained from sources believed to be reliable but has not been verified. NO WARRANTY OR REPRESENTATION, EXPRESS OR IMPLIED, IS MADE AS TO THE CONDITION OF THE PROPERTY (OR PROPERTIES) REFERENCED HEREIN OR AS TO THE ACCURACY OR COMPLETENESS OF THE INFORMATION CONTAINED HEREIN, AND SAME IS SUBMITTED SUBJECT TO ERRORS, OMISSIONS, CHANGE OF PRICE, RENTAL OR OTHER CONDITIONS, WITHDRAWAL WITHOUT NOTICE, AND TO ANY SPECIAL LISTING CONDITIONS IMPOSED BY THE PROPERTY OWNER(S). ANY PROJECTIONS, OPINIONS OR ESTIMATES ARE SUBJECT TO UNCERTAINTY AND DO NOT SIGNIFY CURRENT OR FUTURE PROPERTY PERFORMANCE.

FOR SALE

Reimer Road Land



Murray Goodman
Senior Vice President & Principal
T 204 928 5009
C 204 990 4800
murray.goodman@cwstevenson.ca

Stephen Sherlock
Vice President
T 204 928 5011
C 204 799 5526
steve.sherlock@cwstevenson.ca

Independently Owned and Operated / A Member of the Cushman & Wakefield Alliance ©2022 Cushman & Wakefield. All rights reserved.
The information contained in this communication is strictly confidential.

This information has been obtained from sources believed to be reliable but has not been verified. NO WARRANTY OR REPRESENTATION, EXPRESS OR IMPLIED, IS MADE AS TO THE CONDITION OF THE PROPERTY (OR PROPERTIES) REFERENCED HEREIN OR AS TO THE ACCURACY OR COMPLETENESS OF THE INFORMATION CONTAINED HEREIN, AND SAME IS SUBMITTED SUBJECT TO ERRORS, OMISSIONS, CHANGE OF PRICE, RENTAL OR OTHER CONDITIONS, WITHDRAWAL WITHOUT NOTICE, AND TO ANY SPECIAL LISTING CONDITIONS IMPOSED BY THE PROPERTY OWNER(S). ANY PROJECTIONS, OPINIONS OR ESTIMATES ARE SUBJECT TO UNCERTAINTY AND DO NOT SIGNIFY CURRENT OR FUTURE PROPERTY PERFORMANCE.

