

# 4000 CENTREGREEN

*Cary, NC 27513*



**FOR SUBLEASE**

 **CUSHMAN &  
WAKEFIELD**

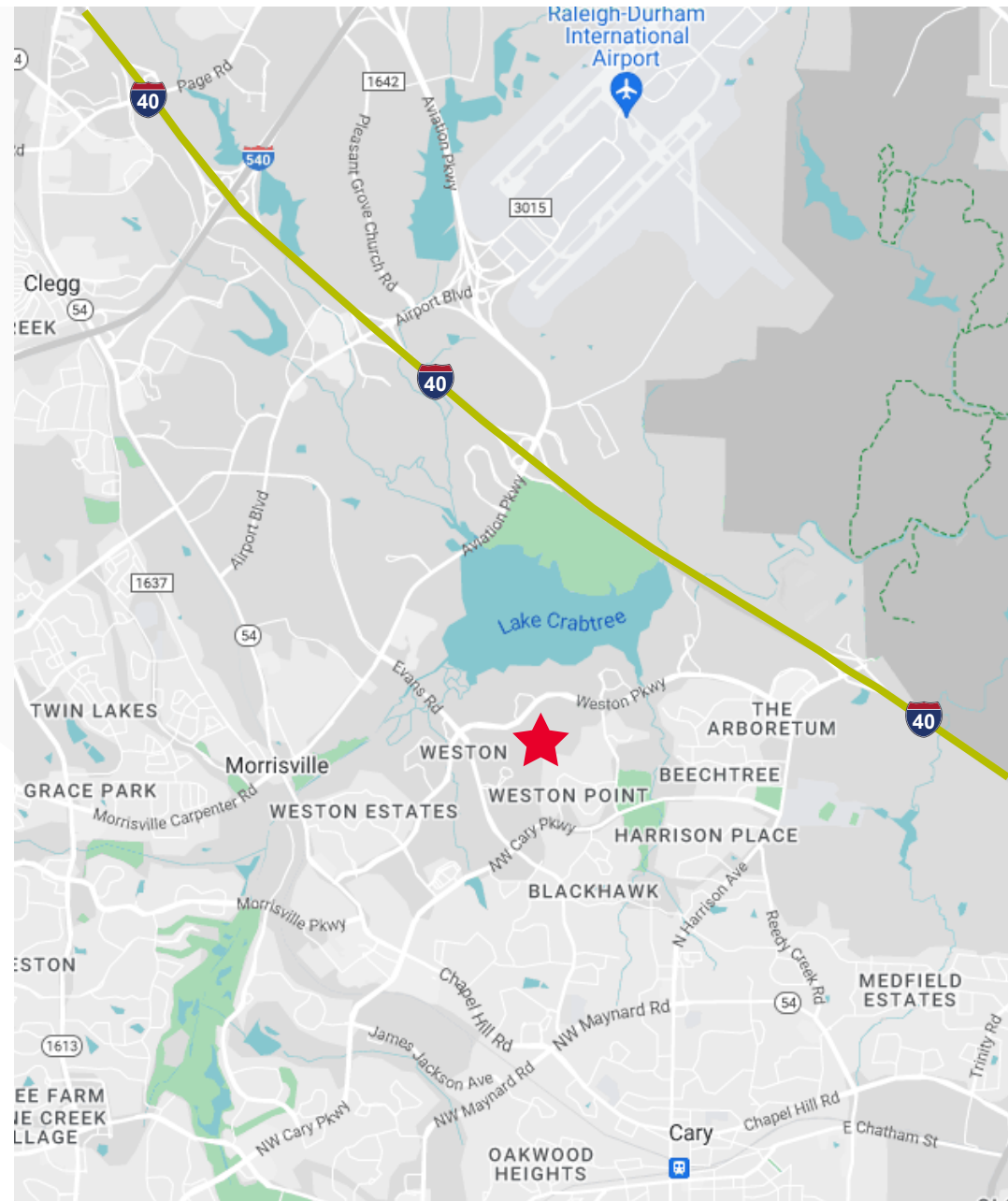
# 01 PROPERTY SPECIFICATIONS

## AVAILABLE SPACE

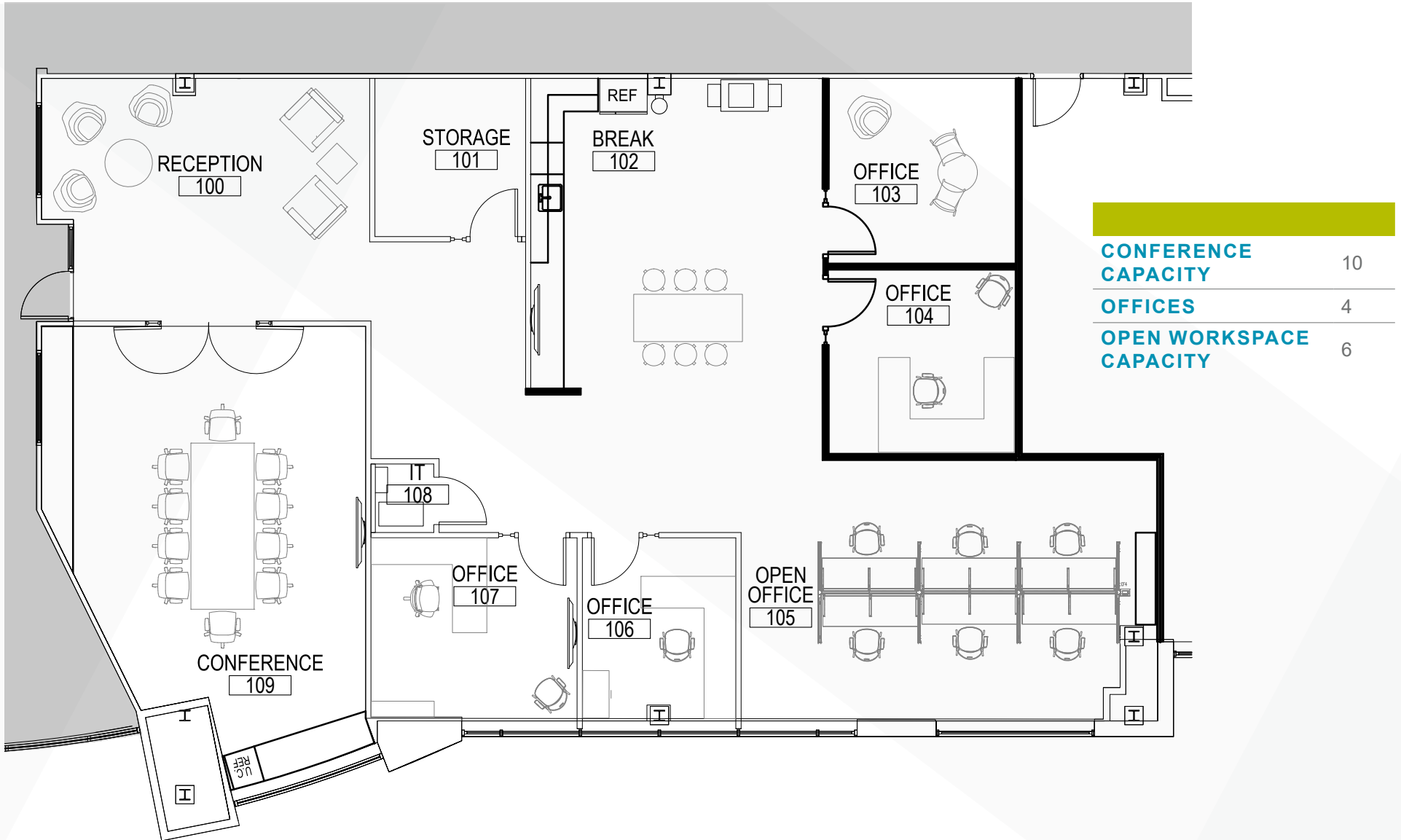
- 3,102 SF
- Available Immediately
- Layout: Reception Area, Large Conference, Break Area, 4 Offices, and Open Bullpen
- Prime Lease Expiration: April 30th, 2027

## BUILDING & LOCATION OVERVIEW

- Attractive sublease opportunity located in the desirable CentreGreen Park, a corporate campus within Cary's Weston corridor
- The park features an expansive, recreational lawn including Highwoods' *Take 5 Café* and its *Velocity fitness* center
- Located adjacent to Umstead State Park with dozens of miles of walking/biking trails
- Conveniently located within minutes of a host of food and beverage retail options
- 4/1,000 parking ratio



# 02 FLOORPLAN



# 03 SITE PHOTOS



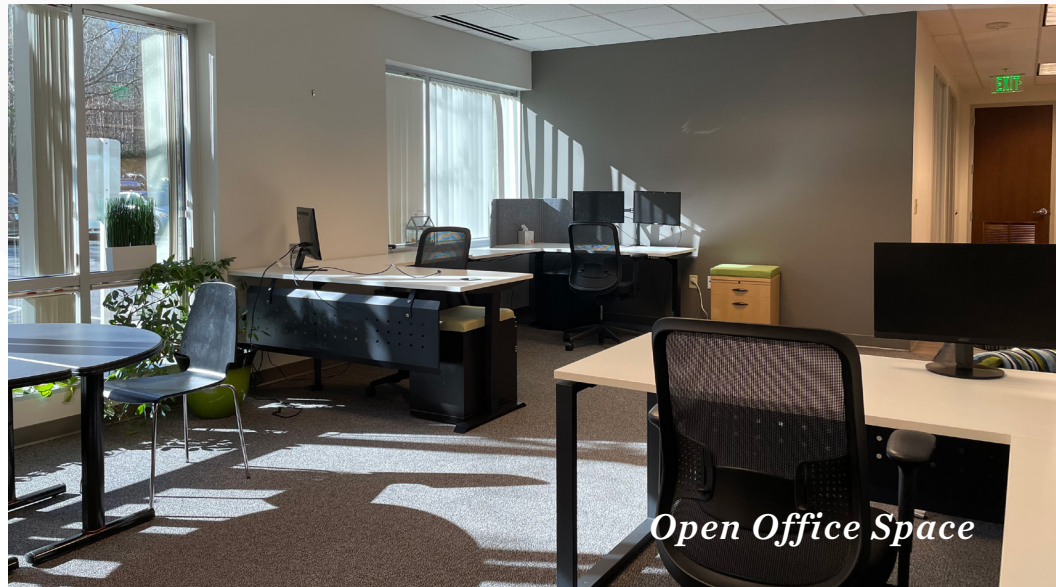
*Reception Area*



*Large Conference Room*



*Break Room*



*Open Office Space*

## **CONTACT**

### **DOUG COOK**

Managing Director

+1 919 439 5158

[doug.cook@cushwake.com](mailto:doug.cook@cushwake.com)

### **SUZANNA NICHOLS**

Senior Associate

+1 919 306 2275

[suzanna.nichols@cushwake.com](mailto:suzanna.nichols@cushwake.com)

### **RICH HARRIS**

Managing Principal

+1 919 439 5151

[rich@transcendcommercial.com](mailto:rich@transcendcommercial.com)