

OTTAWA DATA CENTER

14,805 SF / 2.5 MW
1410 Blair Towers Place,
Gloucester, ON K1J 9B9
Ottawa



FOR MORE INFORMATION, PLEASE
CONTACT:

RANDOLPH BORRON*

Vice Chairman
+1 416 908 2474
randy.borron@cushwake.com

ALAIN DESMARAIS**

Executive Vice President
+1 613 795 9001
adesmarais@cwottawa.com

BRAD HENDERSON**

Managing Director
+1 416 992 8956
Brad.henderson@cushwake.com

MICHAEL BORRON**

Broker - Associate Vice President
+1 416 571 2474
michael.borron@cushwake.com

*Sales Representative, ** Broker





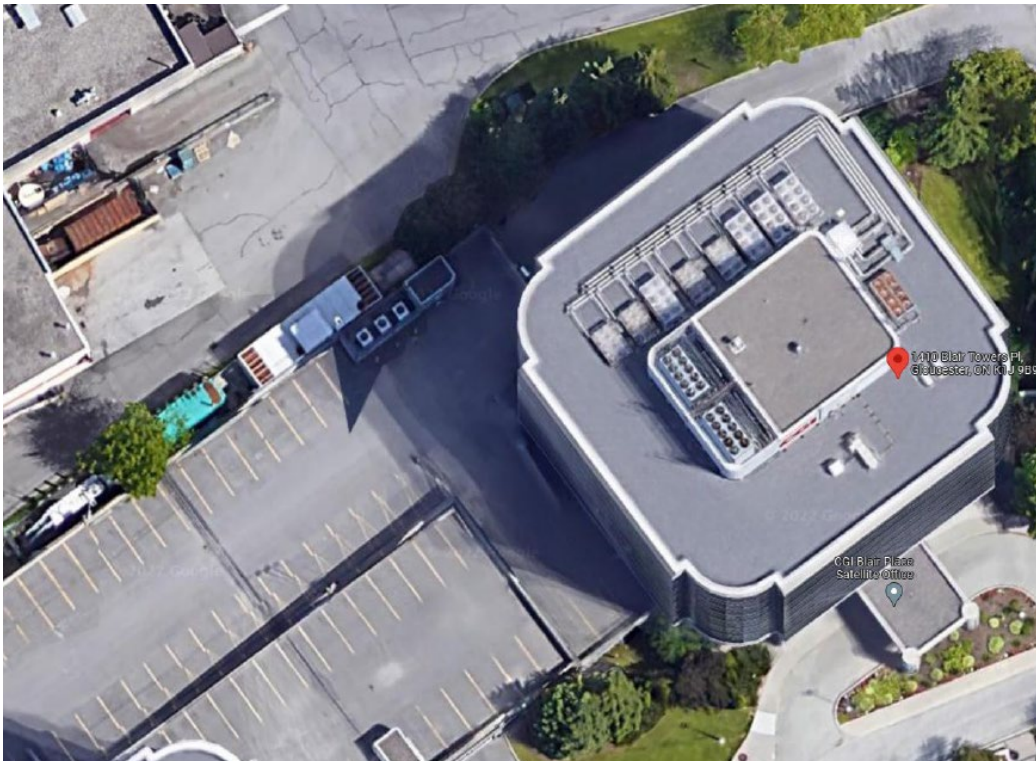
GLOBAL CONNECTIVITY

Data Center Highlights

- State of the art data center
- 2.5 MW of power available, 14,805 square feet
- Fully built-out Data Hall
- Current Carriers providing high speed fiber optics: Bell, Zayo, Rogers & TELUS
- One 1500 kW and two 800 kW generators in place
- Third Floor - 14,805 SF
- Basement - 4,621 SF
- The building is fed from a 2.5MW Hydro Ottawa Transformer which in turn feeds a 3000A main switchboard.
- 24 Hours security system

Leasing Details

- **Net Rent** \$17.50
- **Additional Rent** \$18.45 (estimated for 2022)
- **Long Term Lease Available** 15 years plus



Cooperating brokers offered a selling fee of 4% of gross rent, subject to the terms of the listing agreement.

Third Floor

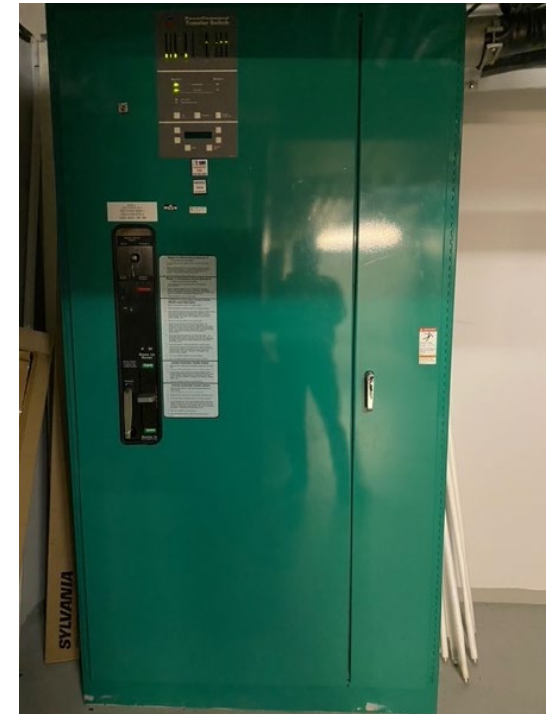
GLOBAL CONNECTIVITY

Existing Infrastructure

- Seven transfer switches,
- Three Uninterrupted Power Supply units up to 400kW size,
- Two 800kW diesel generators, c/w enclosure,
- One 150kW diesel generator, c/w enclosure,
- Three 1200 Amp, 600 Volt switchboards,
- Two 1000 Amp, 600 Volt distribution panels,
- Two 600 Amp, 600 Volt distribution panels,
- Two 400 Amp, 600 Volt distribution panels,
- Two 225 Amp, 600 Volt distribution panels,
- Nine 200 kVA Power Distribution Transformer Units (PDUs),
- Twenty miscellaneous branch panels,
- Ten miscellaneous 30 to 75 kVA transformers,
- Miscellaneous splitters, junction boxes, pull boxes and all associated cabling and raceways,
- Thirty to Forty mechanical cooling and pumping equipment items (AC units, Condensing units, Split units, Dry Coolers, pumps, etc.)



Basement



Map

