



FOR LEASE

UNIT 101
19074 22ND AVENUE
SURREY, BC

20,690 SF WAREHOUSE / OFFICE
DOCK + GRADE LOADING // CRANE SYSTEM IN PLACE
CAMPBELL HEIGHTS INDUSTRIAL PARK



Rick Dhanda

Personal Real Estate Corporation
Associate Vice President, Industrial
+1 604 640 5816
rick.dhanda@ca.cushwake.com

Eric Rice

Personal Real Estate Corporation
Vice President, Industrial
+1 604 640 5877
eric.rice@ca.cushwake.com

Kevin Volz

Personal Real Estate Corporation
Vice President, Industrial
+1 604 640 5851
kevin.volz@cushwake.com



FOR LEASE

UNIT 101

19074 22ND AVENUE

SURREY, BC

LOCATION

The subject property is situated on 1.94 Acres, located on 22nd Avenue one block west of 192nd Street in Campbell Heights Business Park in South Surrey. Campbell Heights is well known as one of the most successful and well planned business parks in the Lower Mainland. Its central location provides easy access to Highways 99, 91, 15 (Pacific Highway), 10 (56th Avenue) and Highway 1. In addition, the US border crossing is only minutes away. Multiple truck routes allow for easy access and egress to Campbell Heights.

ZONING

IB-2 (Business Park 2)

FEATURES

- 2 x Dock level Positions
- Oversized Grade Loading (14'x7')
- 5 ton traveling crane system
- 400amp 600volt, 3 phase power
- Shipping office with WC
- Skylights
- ESFR Sprinklers
- Ample parking
- First in class office improvements
- Executive offices
- Multiple boardrooms
- Complete kitchen & lunch room

UNIT SIZE

Warehouse	14,796 SF
Ground floor office	2,947 SF
Mezzanine office	2,947 SF
TOTAL	20,690 SF

LEASE RATE

\$22.00 PSF, net

ADDITIONAL RENT

\$4.66 PSF (estimate 2024)

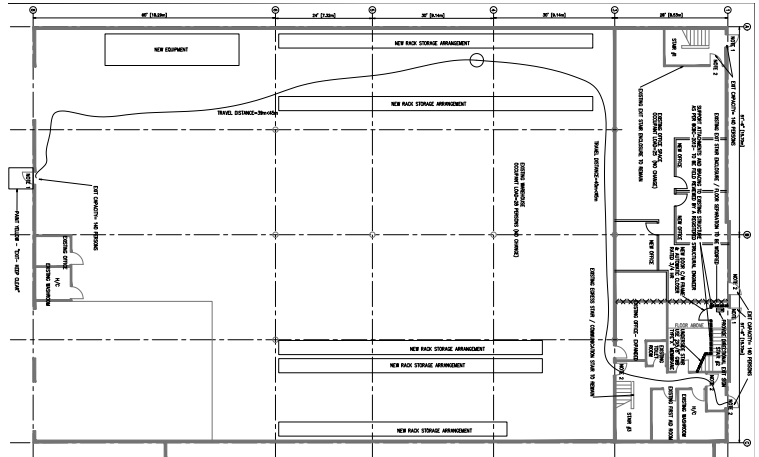
AVAILABILITY

January 15, 2025

PROPERTY PHOTO



FLOOR PLAN



CAMPBELL HEIGHTS BUSINESS PARK



Rick Dhanda

Personal Real Estate Corporation
Associate Vice President, Industrial
+1 604 640 5816
rick.dhanda@ca.cushwake.com

Eric Rice

Personal Real Estate Corporation
Vice President, Industrial
+1 604 640 5877
eric.rice@ca.cushwake.com

Kevin Volz

Personal Real Estate Corporation
Vice President, Industrial
+1 604 640 5851
kevin.volz@ca.cushwake.com