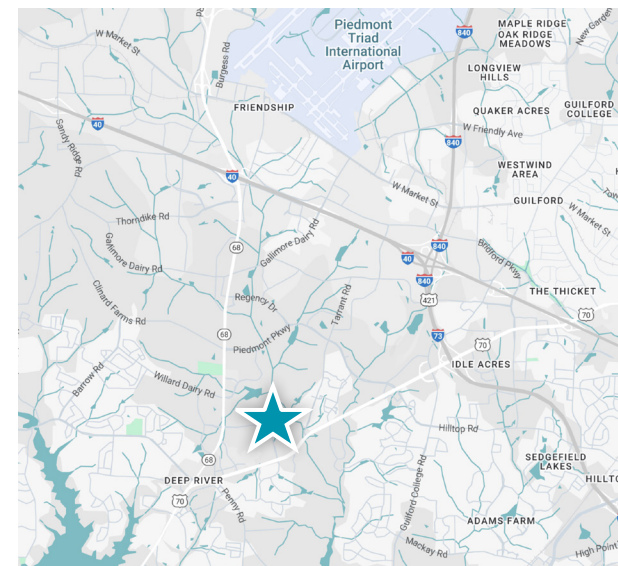




PROPERTY HIGHLIGHTS

Address: 4190 Eagle Hill Drive
Type: Distribution / Office
Available SF: 343,000 +/- SF (Expandable to 480,000 +/- SF)
Office SF: 30,000 +/- SF
Mezzanine SF: 28,000 +/- SF
Year Built: 2002
Clear Height: 34' +/-

Sprinkler: ESFR
Column Spacing: 48' x 50 & 65' x 50'
Dock Doors: (30) Dock Height & (1) 12' x 14' Drive-In
Expansion Area: 451' x 304' = 137,104 SF
Parking: 175 Car Spaces & 20 Trailer Spaces
Utilities: All Municipal



William Woltz
Vice Chairman
+1 336 821 3824
william.woltz@cushwake.com

John Schultz
Managing Director
+1 336 812 3301
john.schultz1@cushwake.com

Jordan Mitchell
Director
+1 336 201 0495
jordan.mitchell@cushwake.com

121-D Reynolda Village
Winston-Salem, NC 27106 | USA
Main: +1 336 668 9999
Fax: +1 336 668 0888
cushmanwakefield.com



4190 EAGLE HILL DRIVE

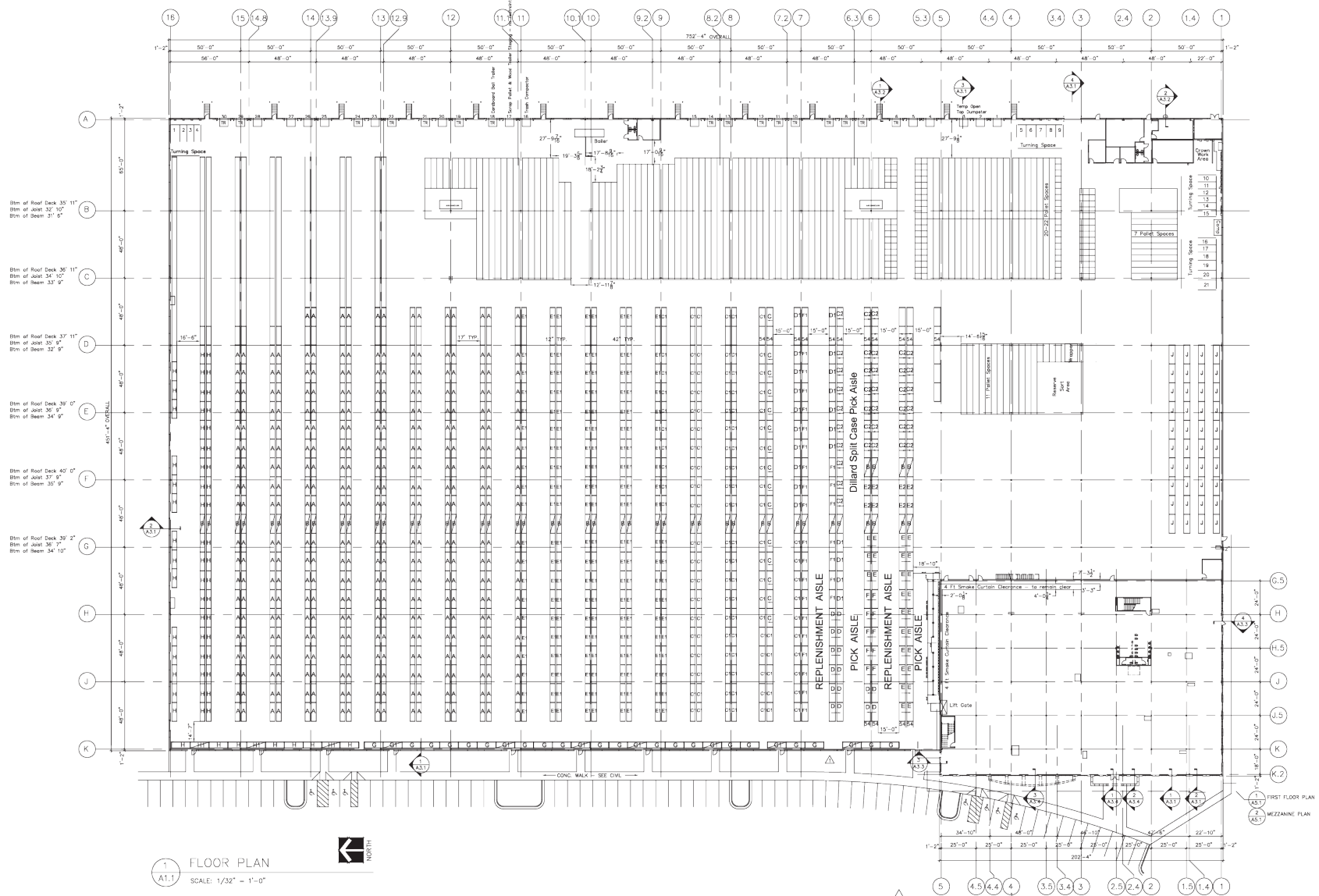
High Point, NC 27265

UP TO 343,000 SF
AVAILABLE FOR SUBLEASE

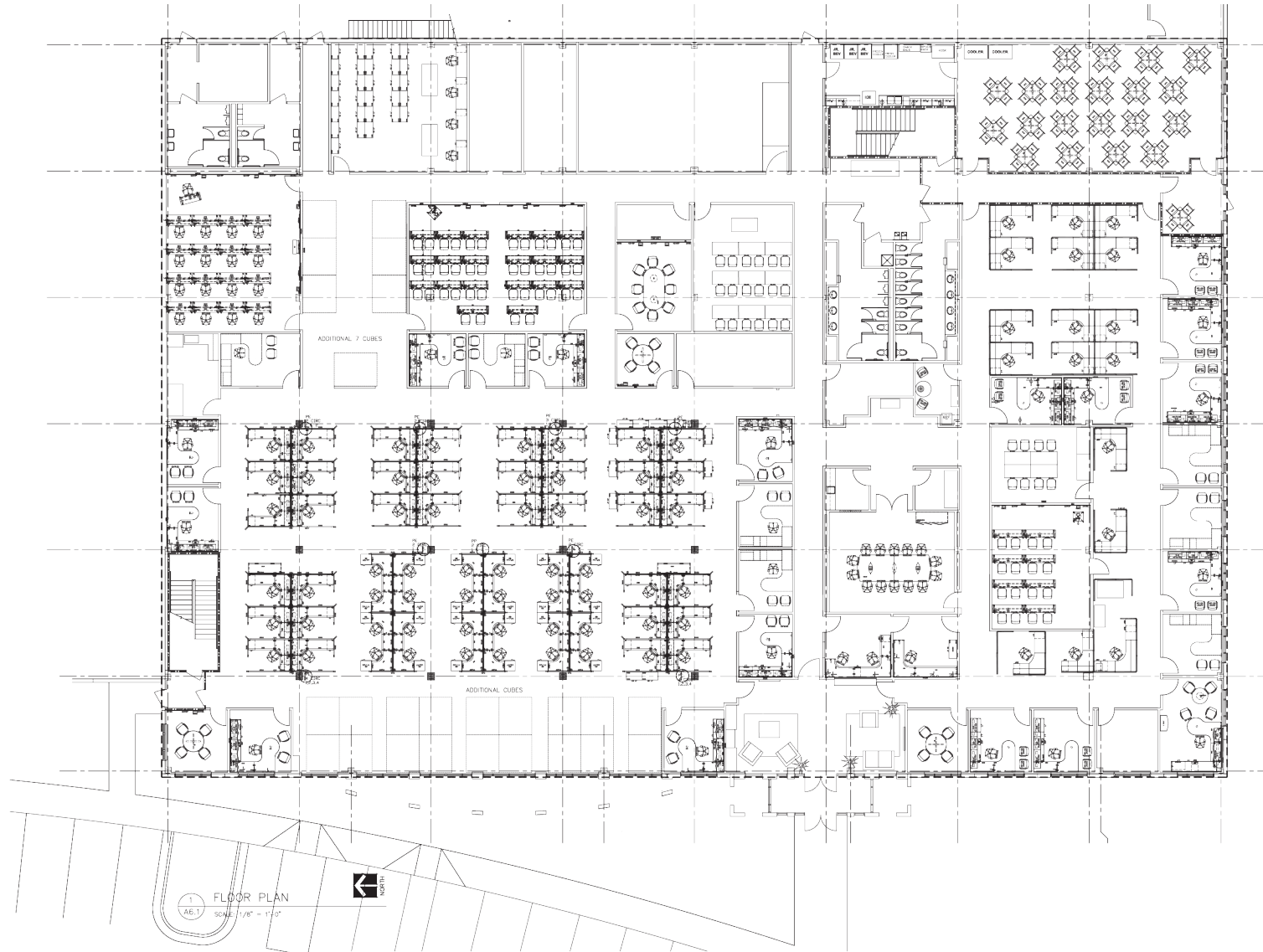


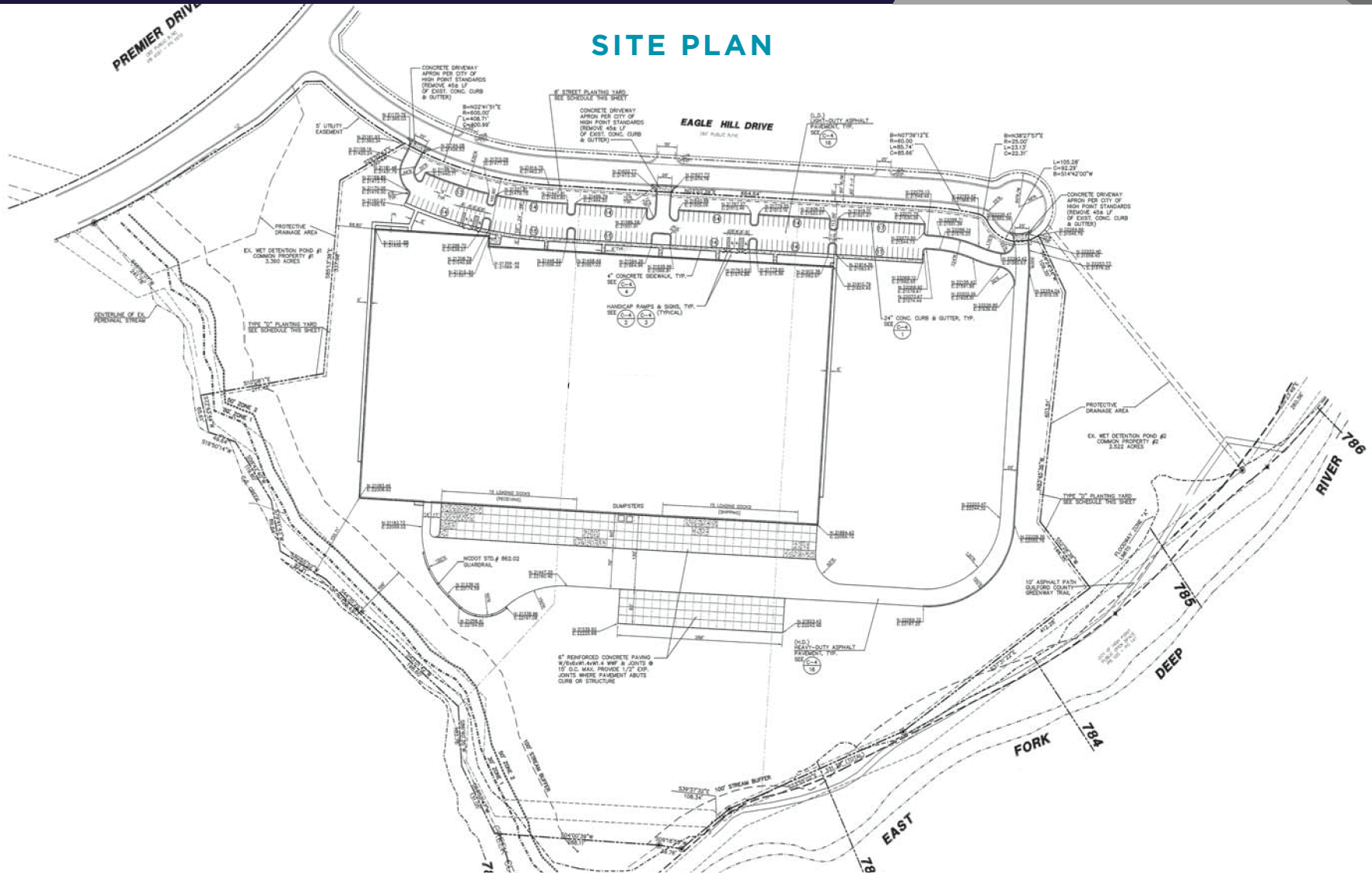


WAREHOUSE PLAN



OFFICE PLAN





William Woltz
Vice Chairman
+1 336 821 3824
william.woltz@cushwake.com

John Schultz
Managing Director
+1 336 812 3301
john.schultz1@cushwake.com

Jordan Mitchell
Director
+1 336 201 0495
jordan.mitchell@cushwake.com

121-D Reynolda Village
Winston-Salem, NC 27106 | USA
Main: +1 336 668 9999
Fax: +1 336 668 0888
cushmanwakefield.com