

FOR LEASE

401 EAST BLVD - SUITE 110

SOUTHEND OFFICE OR SPA SPACE FOR LEASE

- Approximately 1100 sq ft
 - Ground level office suite available
 - Two private entrances and its own bathroom.
 - Long hallway connects the 4-5 rooms (probably sets up well for 3 nice sized offices and a waiting or conference room but could be used for 4-5 work spaces). It was previously used for a massage/wellness space so it could also be used for that type of use or a spa/clinic.
 - Could be used by two independent users with one using the front entrance and office and the other using the side entrance and offices (would share the bathroom).
 - One dedicated parking spot behind the building with a shared parking lot across Euclid (with ample street parking as well).
 - Walking distance to nearby coffee shops and restaurants and light rail.
-

INTERIOR PICTURES

FRONT MAIN OFFICE (OFF SUN ROOM)



2ND FULL OFFICE



INTERIOR PICTURES

HALLWAY



3RD OFFICE (OR WAITING ROOM/CONFERENCE ROOM)



4TH BACK OFFICE



PRIVATE BATHROOM



DEDICATED PARKING (WITH SHARED LOT AND STREET PARKING)

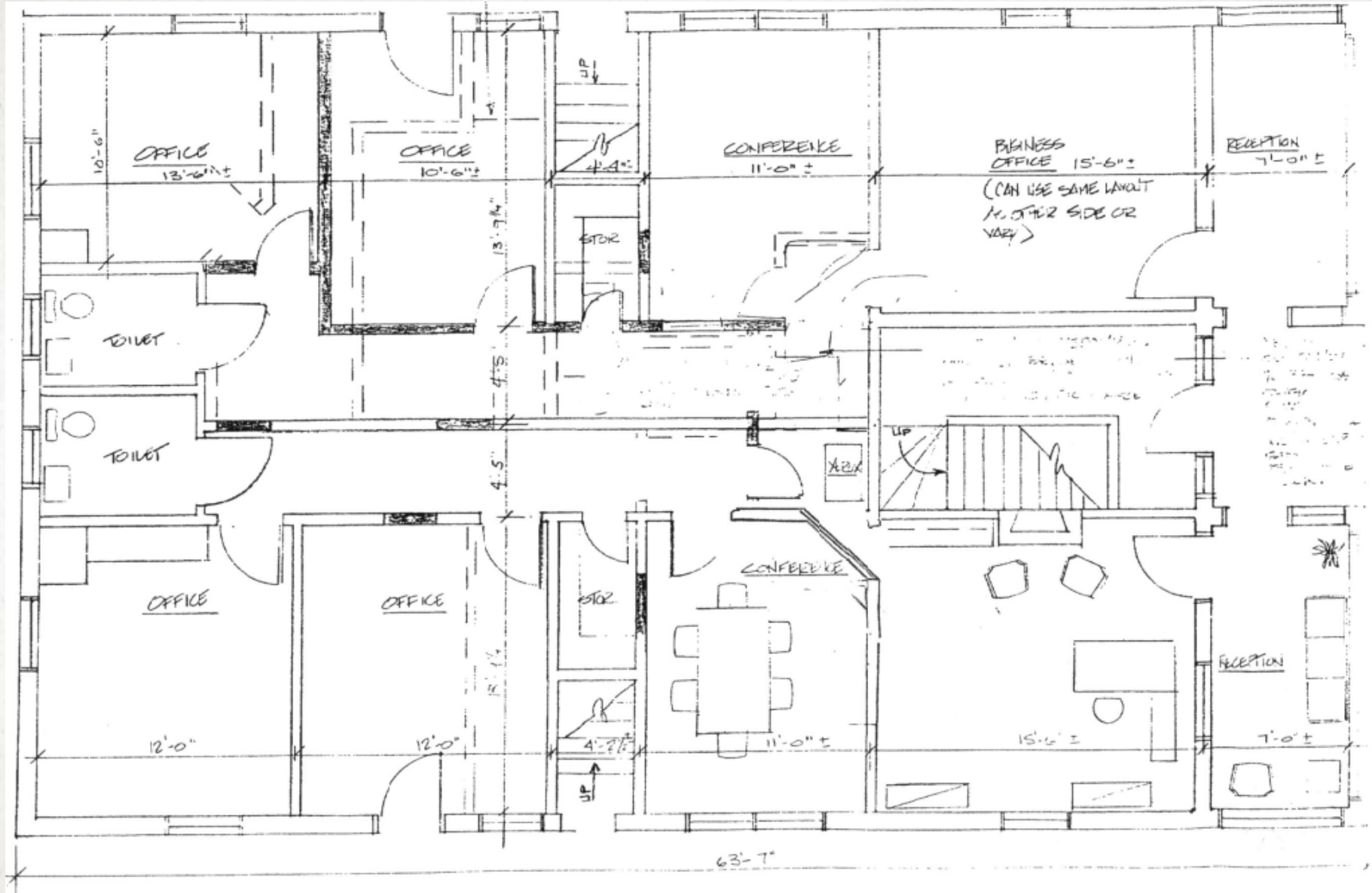
BACK OF OFFICE AND PARKING LOT



SHARED PARKING LOT ACROSS EUCLID



LAYOUT (SUITE 110 IS TOP HALF OF SKETCH)



Contact Byron Burns for more information

704-426-3008

byron@redironpartners.com

**Will work with brokers

401 EAST BLVD SUITE 110

FOR LEASE
