

**FOR LEASE**

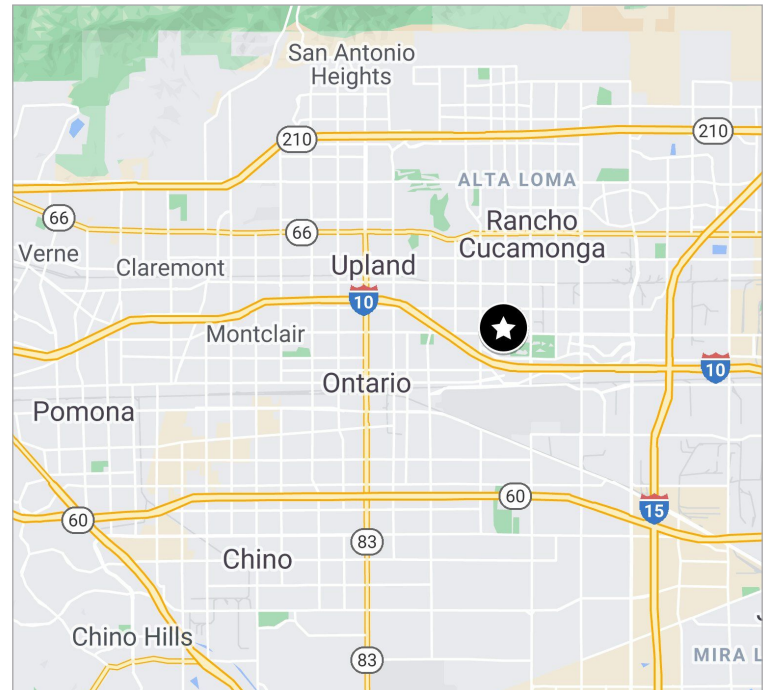
# 1190 N. DEL RIO PLACE ONTARIO, CALIFORNIA

+/-24,089 Sq. Ft. INDUSTRIAL BUILDING



## PROPERTY HIGHLIGHTS

- +/-24,089 SF Located on 1.367 Acres
- +/-3,600 SF Office Area
- 24' Minimum Clear Height
- 3 Dock High Doors (9'x10')
- 2 Ground Level Doors (12'x14')
- .45 GPM/3,000 SF Sprinkler System
- 400 Amp, 277/480 Volt, 3 Phase Power
- Secured Yard Area
- 39 Car Parking Spaces
- Excellent Access to I-10 Freeway via Vineyard Avenue and Archibald Avenue On/Off Ramps



FOR MORE INFORMATION, PLEASE CONTACT:

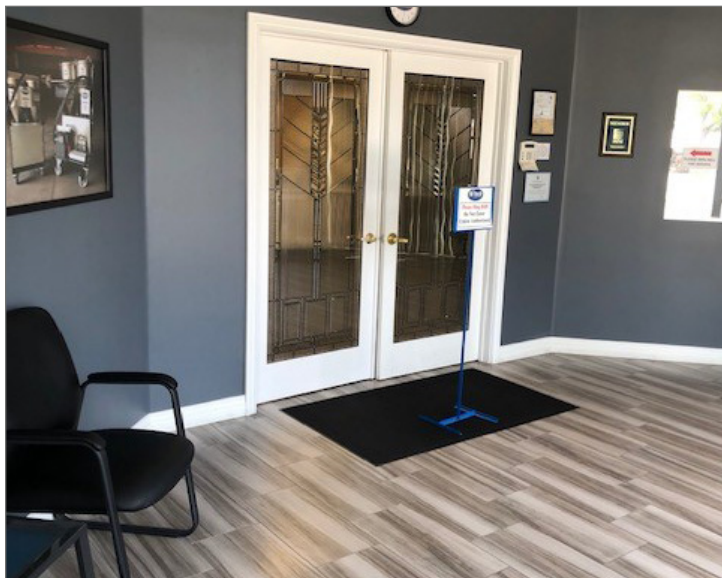
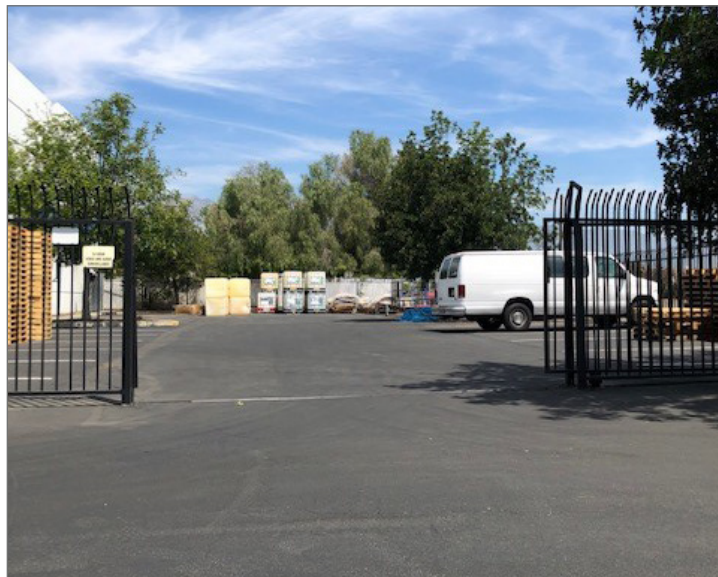
**Tim Pimentel, SIOR**  
+1 909 942 4647  
tim.pimentel@cushwake.com  
LIC #01421452

**Robin Dodson**  
+1 213 955 6460  
robin.dodson@cushwake.com  
LIC #00956329

**FOR LEASE**

# 1190 N. DEL RIO PLACE ONTARIO, CALIFORNIA

+/-24,089 Sq. Ft. INDUSTRIAL BUILDING



FOR MORE INFORMATION, PLEASE CONTACT:

**Tim Pimentel, SIOR**  
+1 909 942 4647  
tim.pimentel@cushwake.com  
LIC #01421452

**Robin Dodson**  
+1 213 955 6460  
robin.dodson@cushwake.com  
LIC #00956329

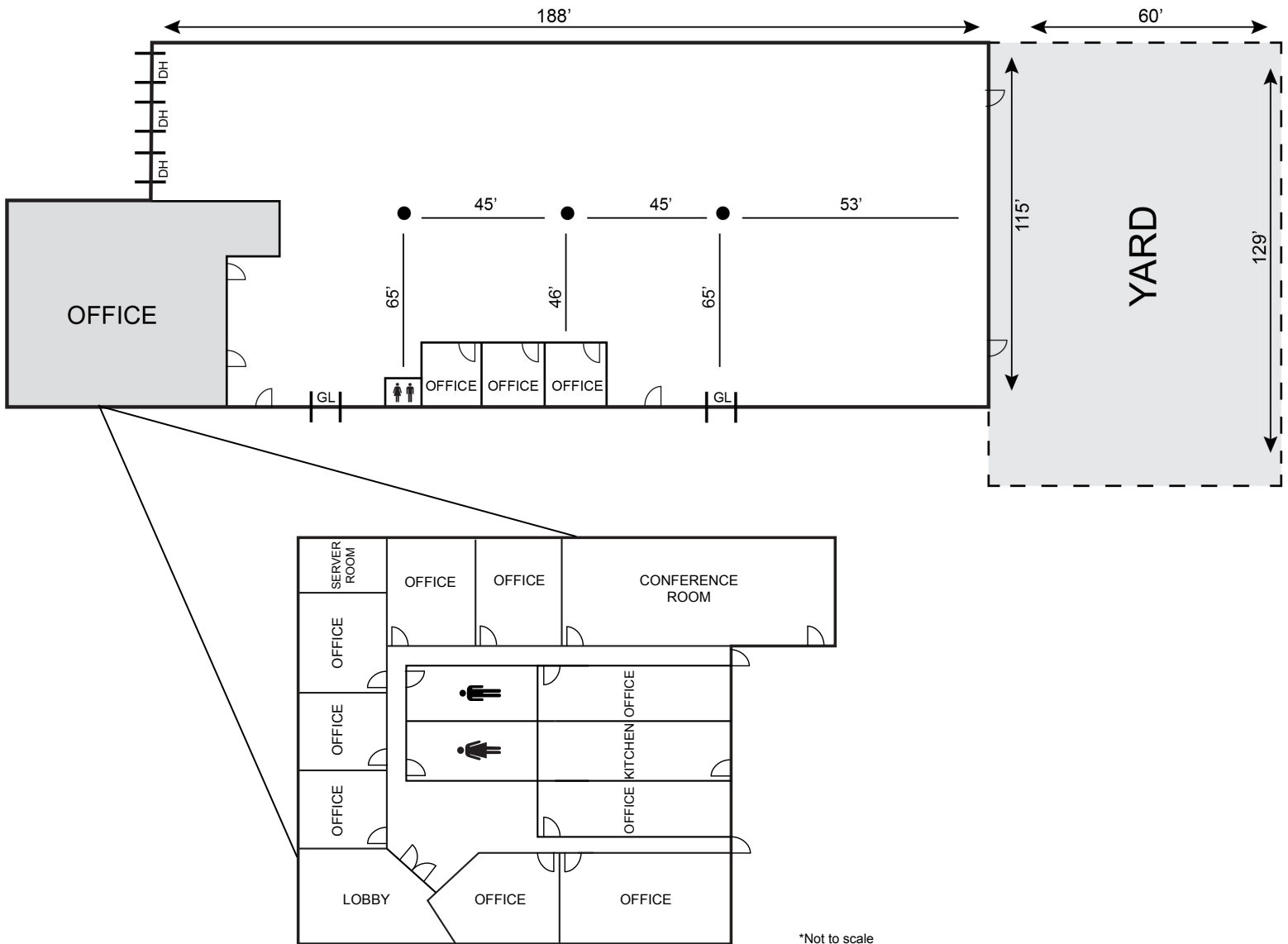
©2022 Cushman & Wakefield. All rights reserved. The information contained in this communication is strictly confidential. This information has been obtained from sources believed to be reliable but has not been verified. No warranty or representation, express or implied, is made as to the condition of the property (or properties) referenced herein or as to the accuracy or completeness of the information contained herein, and same is submitted subject to errors, omissions, change of price, rental or other conditions, withdrawal without notice, and to any special listing conditions imposed by the property owner(s). Any projections, opinions or estimates are subject to uncertainty and do not signify current or future property performance.

**FOR LEASE**

# 1190 N. DEL RIO PLACE

ONTARIO, CALIFORNIA

+/-24,089 Sq. Ft. INDUSTRIAL BUILDING



FOR MORE INFORMATION, PLEASE CONTACT:

**Tim Pimentel, SIOR**  
+1 909 942 4647  
tim.pimentel@cushwake.com  
LIC #01421452

**Robin Dodson**  
+1 213 955 6460  
robin.dodson@cushwake.com  
LIC #00956329

©2022 Cushman & Wakefield. All rights reserved. The information contained in this communication is strictly confidential. This information has been obtained from sources believed to be reliable but has not been verified. No warranty or representation, express or implied, is made as to the condition of the property (or properties) referenced herein or as to the accuracy or completeness of the information contained herein, and same is submitted subject to errors, omissions, change of price, rental or other conditions, withdrawal without notice, and to any special listing conditions imposed by the property owner(s). Any projections, opinions or estimates are subject to uncertainty and do not signify current or future property performance.