

FOR LEASE
1321 LONG STREET
HIGH POINT, NC 27262



**GENERAL OFFICE BUILDING
AVAILABLE FOR SALE OR
LEASE**



CALL FOR PRICING

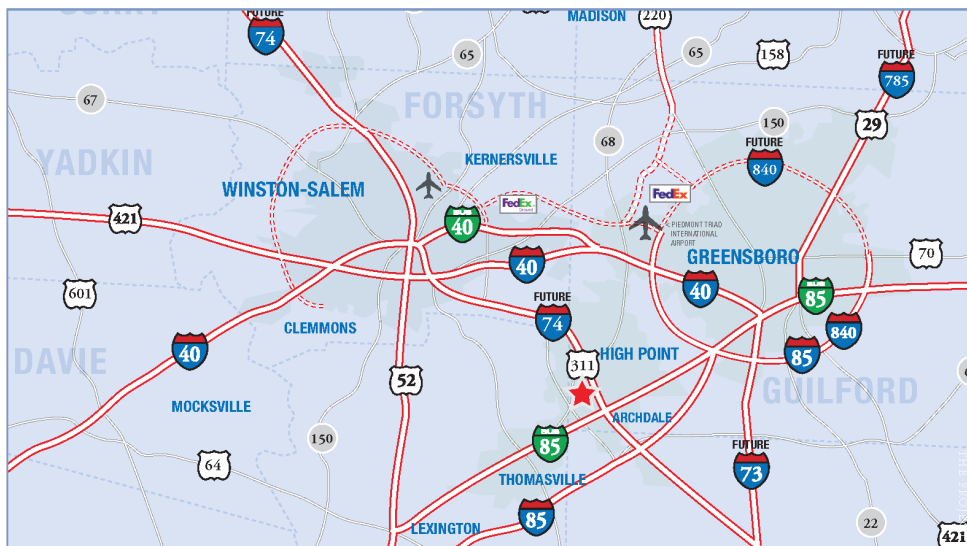
+/-15,024 RSF OFFICE BUILDING

Located just off Main St in High Point, NC within walking distance to a variety of retail and dining amenities.

PROPERTY FEATURES

+/-15,024 RSF standalone property located on +/-1.2 acres

- Level 1 and 2: +/-12,624 RSF (+/-6,312 RSF per floor)
- Lower Level/Storage (fully conditioned): +/-2,400 RSF
- Ample Parking Available
- Efficient floorplan layout with access to lower level and 2nd level via 2 stairwells (2)



LEASING CONTACTS

Bobby Finch
Executive Managing Director
+1 336 812 3303
bobby.finch@cushwake.com

Ryan W. Gioffre
Senior Director
+1 336 821 3822
ryan.gioffre@cushwake.com

628 Green Valley Road, Ste. 202
Greensboro, NC 27408

T +1 336 668 9999
F +1 336 668 0888

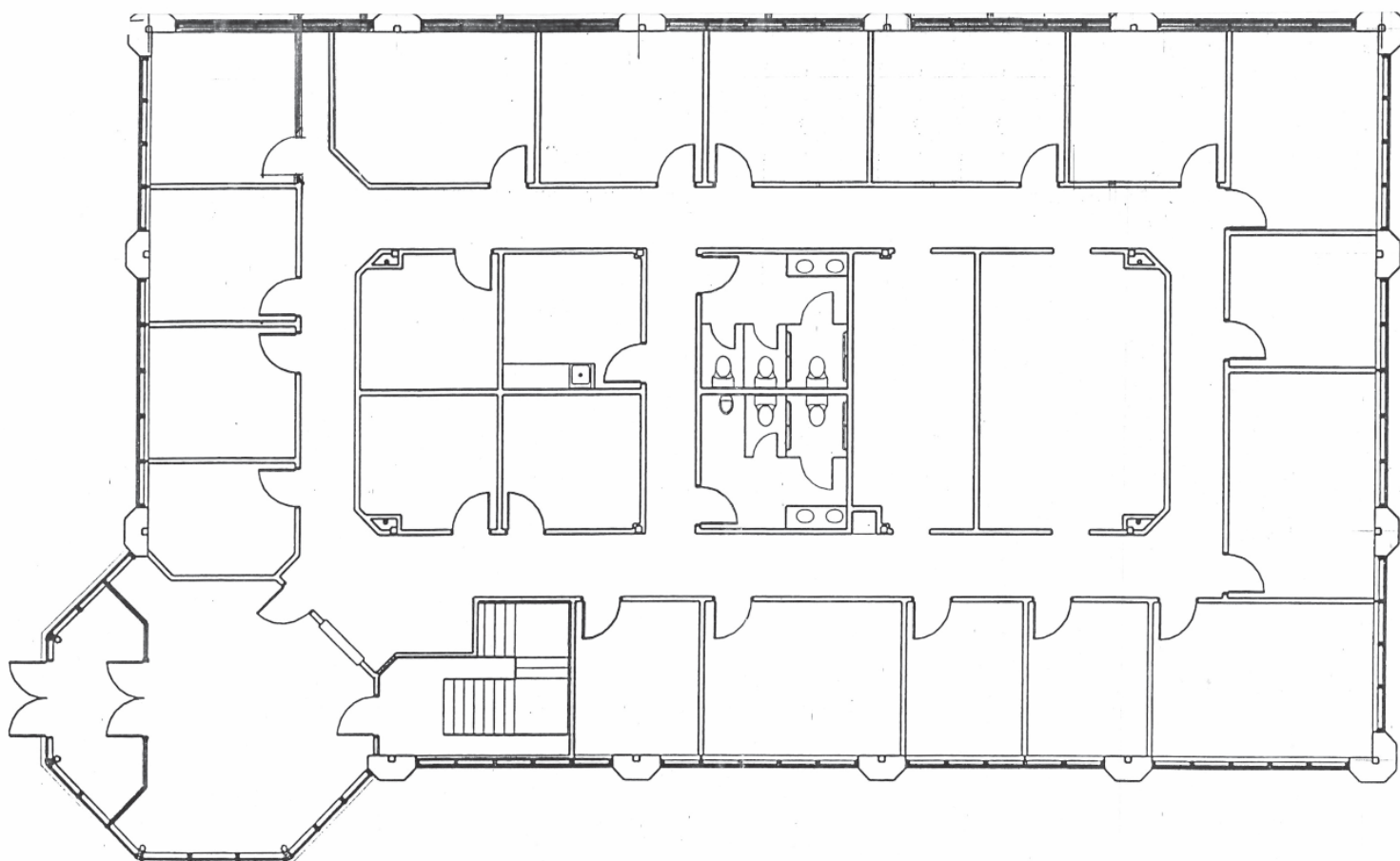
cushmanwakefield.com

1ST FLOOR PLAN
1321 LONG STREET
HIGH POINT, NC 27262



**GENERAL OFFICE BUILDING
AVAILABLE FOR SALE OR
LEASE**

FIRST FLOOR



LEASING CONTACTS

Bobby Finch
Executive Managing Director
+1 336 812 3303
bobby.finch@cushwake.com

Ryan W. Gioffre
Senior Director
+1 336 821 3822
ryan.gioffre@cushwake.com

628 Green Valley Road, Ste. 202
Greensboro, NC 27408

T +1 336 668 9999
F +1 336 668 0888

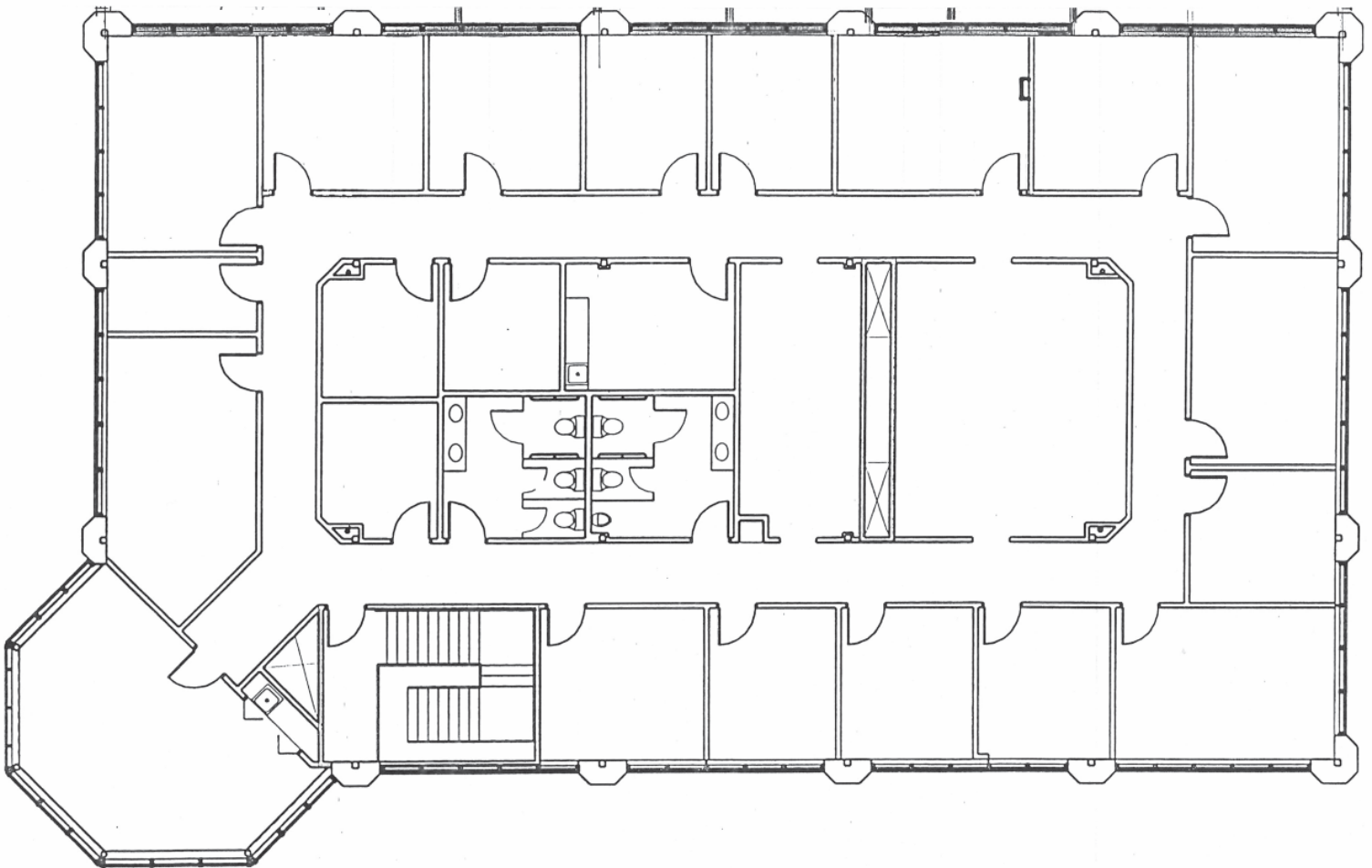
cushmanwakefield.com

2ND FLOOR PLAN
1321 LONG STREET
HIGH POINT, NC 27262



**GENERAL OFFICE BUILDING
AVAILABLE FOR SALE OR
LEASE**

SECOND FLOOR



LEASING CONTACTS

Bobby Finch
Executive Managing Director
+1 336 812 3303
bobby.finch@cushwake.com

Ryan W. Gioffre
Senior Director
+1 336 821 3822
ryan.gioffre@cushwake.com

628 Green Valley Road, Ste. 202
Greensboro, NC 27408

T +1 336 668 9999
F +1 336 668 0888

cushmanwakefield.com

PROPERTY PHOTOS

1321 LONG STREET

HIGH POINT, NC 27262



CUSHMAN &
WAKEFIELD

**GENERAL OFFICE BUILDING
AVAILABLE FOR SALE OR
LEASE**



LEASING CONTACTS

Bobby Finch
Executive Managing Director
+1 336 812 3303
bobby.finch@cushwake.com

Ryan W. Gioffre
Senior Director
+1 336 821 3822
ryan.gioffre@cushwake.com

628 Green Valley Road, Ste. 202
Greensboro, NC 27408

T +1 336 668 9999
F +1 336 668 0888

cushmanwakefield.com

© 2019 Cushman & Wakefield. All rights reserved. The information contained in this communication is strictly confidential. This information has been obtained from sources believed to be reliable but has not been verified. NO WARRANTY OR REPRESENTATION, EXPRESS OR IMPLIED, IS MADE AS TO THE CONDITION OF THE PROPERTY (OR PROPERTIES) REFERENCED HEREIN OR AS TO THE ACCURACY OR COMPLETENESS OF THE INFORMATION CONTAINED HEREIN, AND SAME IS SUBMITTED SUBJECT TO ERRORS, OMISSIONS, CHANGE OF PRICE, RENTAL OR OTHER CONDITIONS, WITHDRAWAL WITHOUT NOTICE, AND TO ANY SPECIAL LISTING CONDITIONS IMPOSED BY THE PROPERTY OWNER(S). ANY PROJECTIONS, OPINIONS OR ESTIMATES ARE SUBJECT TO UNCERTAINTY AND DO NOT SIGNIFY CURRENT OR FUTURE PROPERTY PERFORMANCE.

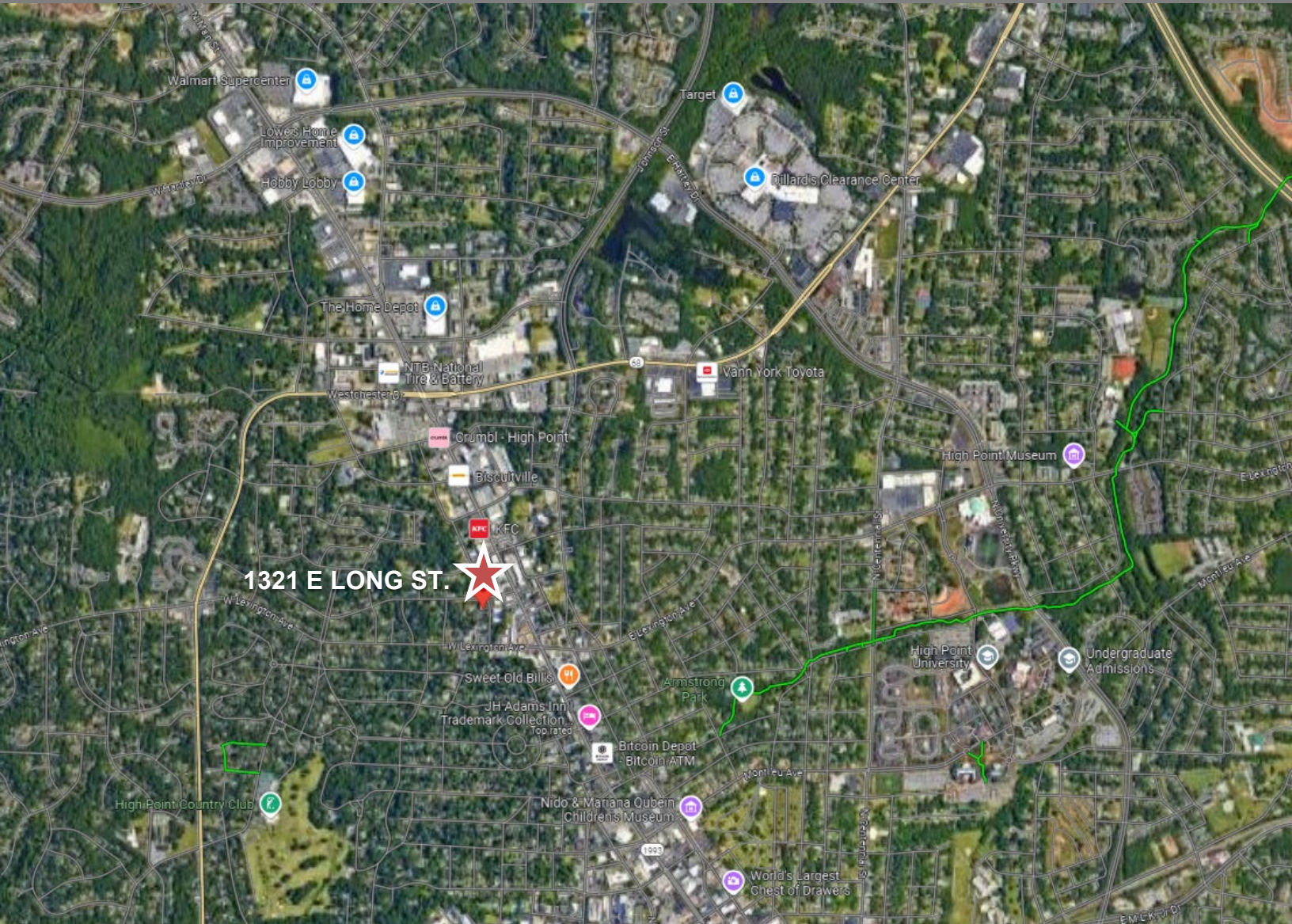
LOCATION AERIAL

1321 LONG STREET

HIGH POINT, NC 27262



**GENERAL OFFICE BUILDING
AVAILABLE FOR SALE OR
LEASE**



LEASING CONTACTS

Bobby Finch
Executive Managing Director
+1 336 812 3303
bobby.finch@cushwake.com

Ryan W. Gioffre
Senior Director
+1 336 821 3822
ryan.gioffre@cushwake.com

628 Green Valley Road, Ste. 202
Greensboro, NC 27408

T +1 336 668 9999
F +1 336 668 0888

cushmanwakefield.com

PARCEL AERIAL

1321 LONG STREET

HIGH POINT, NC 27262



**GENERAL OFFICE BUILDING
AVAILABLE FOR SALE OR
LEASE**



Demographics	CoStar, 2024		
	2 Mile	5 Miles	10 Miles
Population	34,442	112,516	275,125
Households	12,699	43,797	111,957
Average HH Income	\$67,959	\$72,185	\$78,637
Daytime Population	19,475	39,741	109,386

Traffic Volume	CoStar, 2022
	N Main St
N Main St Kelly Pl SE	25,709
N Main St & Hillcrest Pl	25,500
E Lexington Ave	9,900
E Lexington & Johnson	9,790
W Lexington & N Main	9,600

LEASING CONTACTS

Bobby Finch
Executive Managing Director
+1 336 812 3303
bobby.finch@cushwake.com

Ryan W. Gioffre
Senior Director
+1 336 821 3822
ryan.gioffre@cushwake.com

628 Green Valley Road, Ste. 202
Greensboro, NC 27408

T +1 336 668 9999
F +1 336 668 0888

cushmanwakefield.com

© 2019 Cushman & Wakefield. All rights reserved. The information contained in this communication is strictly confidential. This information has been obtained from sources believed to be reliable but has not been verified. NO WARRANTY OR REPRESENTATION, EXPRESS OR IMPLIED, IS MADE AS TO THE CONDITION OF THE PROPERTY (OR PROPERTIES) REFERENCED HEREIN OR AS TO THE ACCURACY OR COMPLETENESS OF THE INFORMATION CONTAINED HEREIN, AND SAME IS SUBMITTED SUBJECT TO ERRORS, OMISSIONS, CHANGE OF PRICE, RENTAL OR OTHER CONDITIONS, WITHDRAWAL WITHOUT NOTICE, AND TO ANY SPECIAL LISTING CONDITIONS IMPOSED BY THE PROPERTY OWNER(S). ANY PROJECTIONS, OPINIONS OR ESTIMATES ARE SUBJECT TO UNCERTAINTY AND DO NOT SIGNIFY CURRENT OR FUTURE PROPERTY PERFORMANCE.