



2595 VICEROY DRIVE

Winston-Salem, NC 27103

20,441 SF

AVAILABLE FOR LEASE



PROPERTY HIGHLIGHTS

Available SF: 20,441 SF
Year Built: 1992
Site Acreage: 0.95 Acres
Ceiling Height: 18'
Dock Doors: Two (2) 8' X 10' Doors
Drive-in Doors: One (1) 10' x 12' Door

Lighting: LED Lighting
Heat: Suspended Gas Packs
Zoning: GI
Available for Lease: On 1/1/2025

Bobby Finch
 Executive Managing Director
 +1 336 812 3303
 bobby.finch@cushwake.com

Seth Constable
 Senior Associate
 +1 336 885 7815
 seth.constable@cushwake.com

121-D Reynolda Village
 Winston-Salem, NC 27106 | USA
 Main: +1 336 668 9999
 Fax: +1 336 668 0888
cushmanwakefield.com





2595 VICEROY DRIVE
Winston-Salem, NC 27103

20,441 SF
AVAILABLE FOR LEASE



Bobby Finch
Executive Managing Director
+1 336 812 3303
bobby.finch@cushwake.com

Seth Constable
Senior Associate
+1 336 885 7815
seth.constable@cushwake.com

121-D Reynolda Village
Winston-Salem, NC 27106 | USA
Main: +1 336 668 9999
Fax: +1 336 668 0888
cushmanwakefield.com

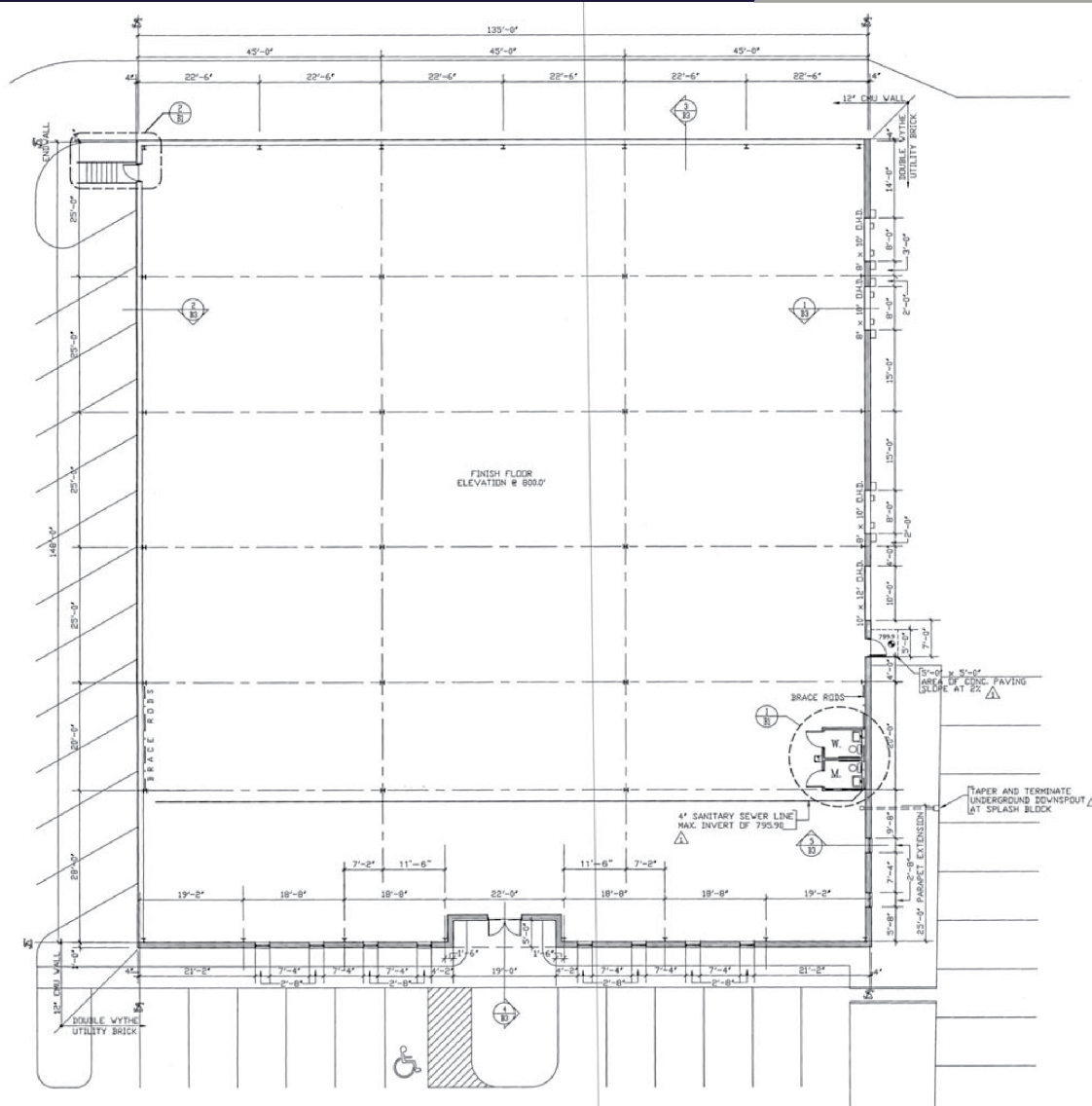


Bobby Finch
Executive Managing Director
+1 336 812 3303
bobby.finch@cushwake.com

Seth Constable
Senior Associate
+1 336 885 7815
seth.constable@cushwake.com

121-D Reynolda Village
Winston-Salem, NC 27106 | USA
Main: +1 336 668 9999
Fax: +1 336 668 0888
cushmanwakefield.com

FLOORPLAN



Bobby Finch
Executive Managing Director
+1 336 812 3303
bobby.finch@cushwake.com

Seth Constable
Senior Associate
+1 336 885 7815
seth.constable@cushwake.com

121-D Reynolda Village
Winston-Salem, NC 27106 | USA
Main: +1 336 668 9999
Fax: +1 336 668 0888
cushmanwakefield.com