

FOR LEASE

KITIMAT BUSINESS PARK

6581, 6597, 6601 KITIMAT ROAD, MISSISSAUGA



PROPERTY FEATURES

6597 KITIMAT ROAD, UNIT 2, MISSISSAUGA

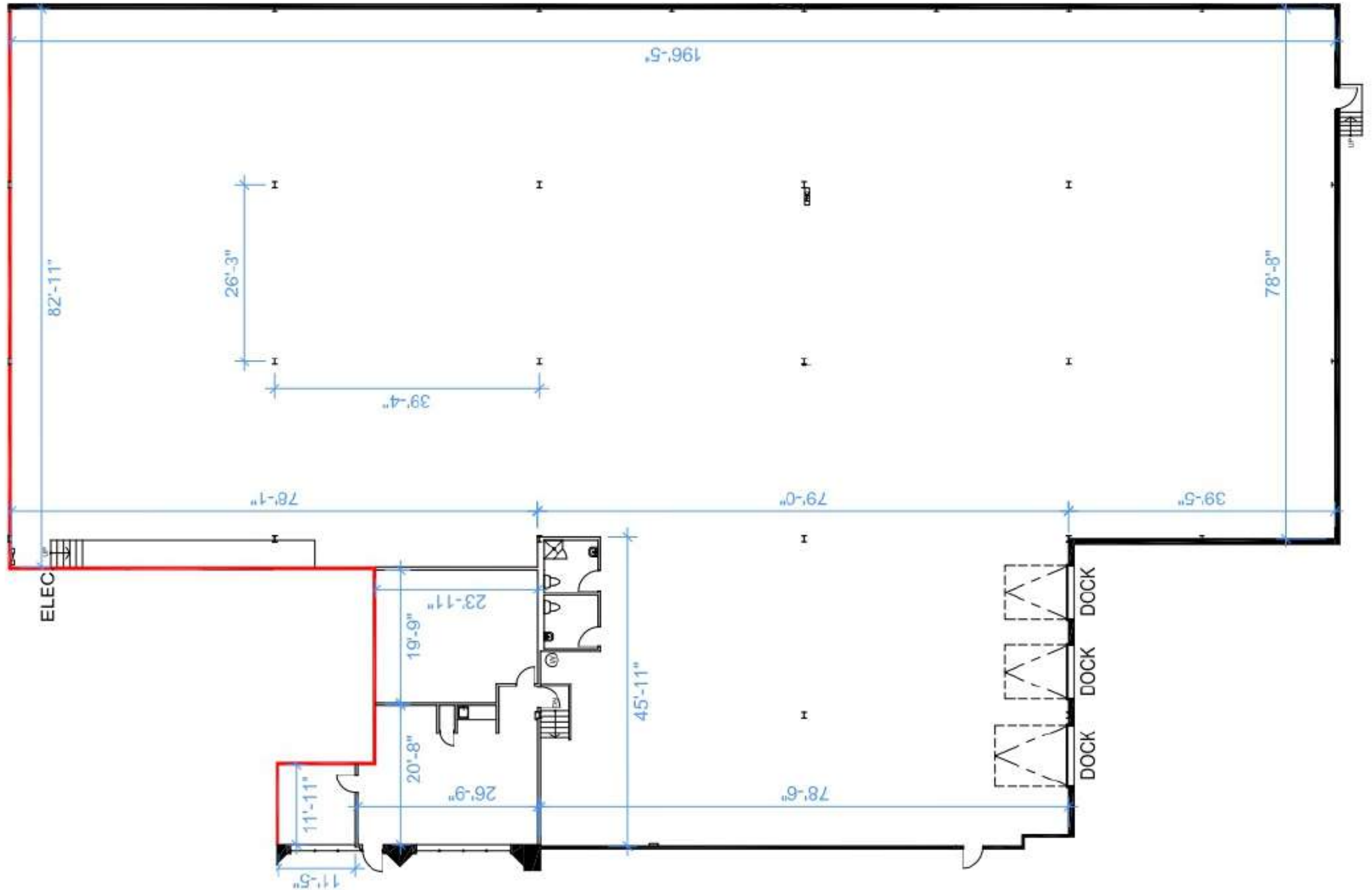


INDUSTRIAL MULTI

Space Available:	Unit 2: 21,322 SF
Office Area:	1,250 SF
Clear Height:	24'
Loading:	3 Truck Level Doors
Available:	Immediate
Asking Rate:	\$19.95 Net PSF
Additional Rent:	\$5.78 PSF

FLOOR PLAN

6597 KITIMAT ROAD, UNIT 2, MISSISSAUGA



PROPERTY FEATURES

6581 KITIMAT ROAD, UNIT 3-4, MISSISSAUGA



INDUSTRIAL MULTI

Space Available: Unit 3-4: 14,887 SF

Office Area: 4,288 SF

Clear Height: 18'

Loading: 1 Drive-In
2 Truck Level

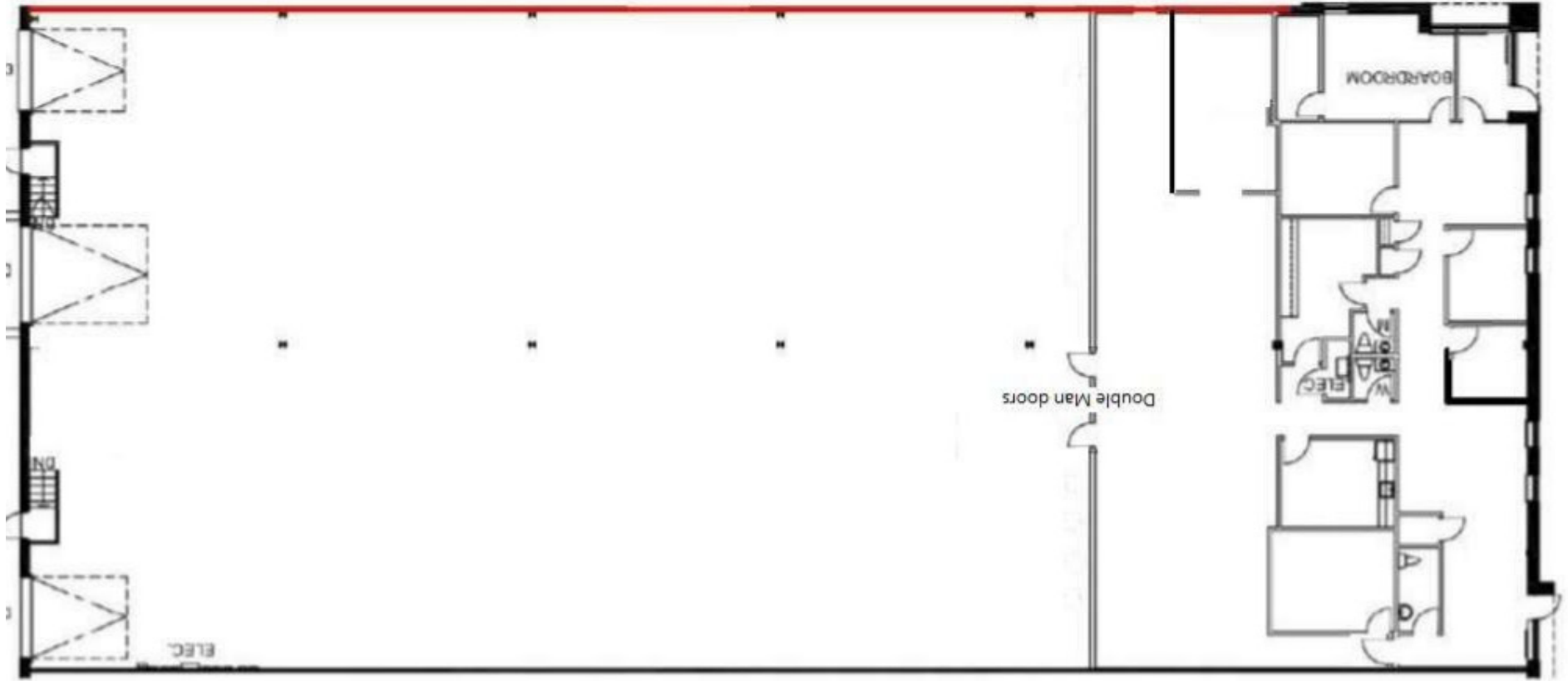
Available: Immediate

Asking Rate: \$19.95 Net PSF

Additional Rent: \$5.78 PSF

FLOOR PLAN

6581 KITIMAT ROAD, UNIT 3-4, MISSISSAUGA



PROPERTY FEATURES

6601 KITIMAT ROAD, MISSISSAUGA



FREESTANDING BUILDING

Space Available: 18,695 SF

Office Area: 9,347 SF

Clear Height: 18'

Loading: 1 Drive-In
4 Truck Level Doors

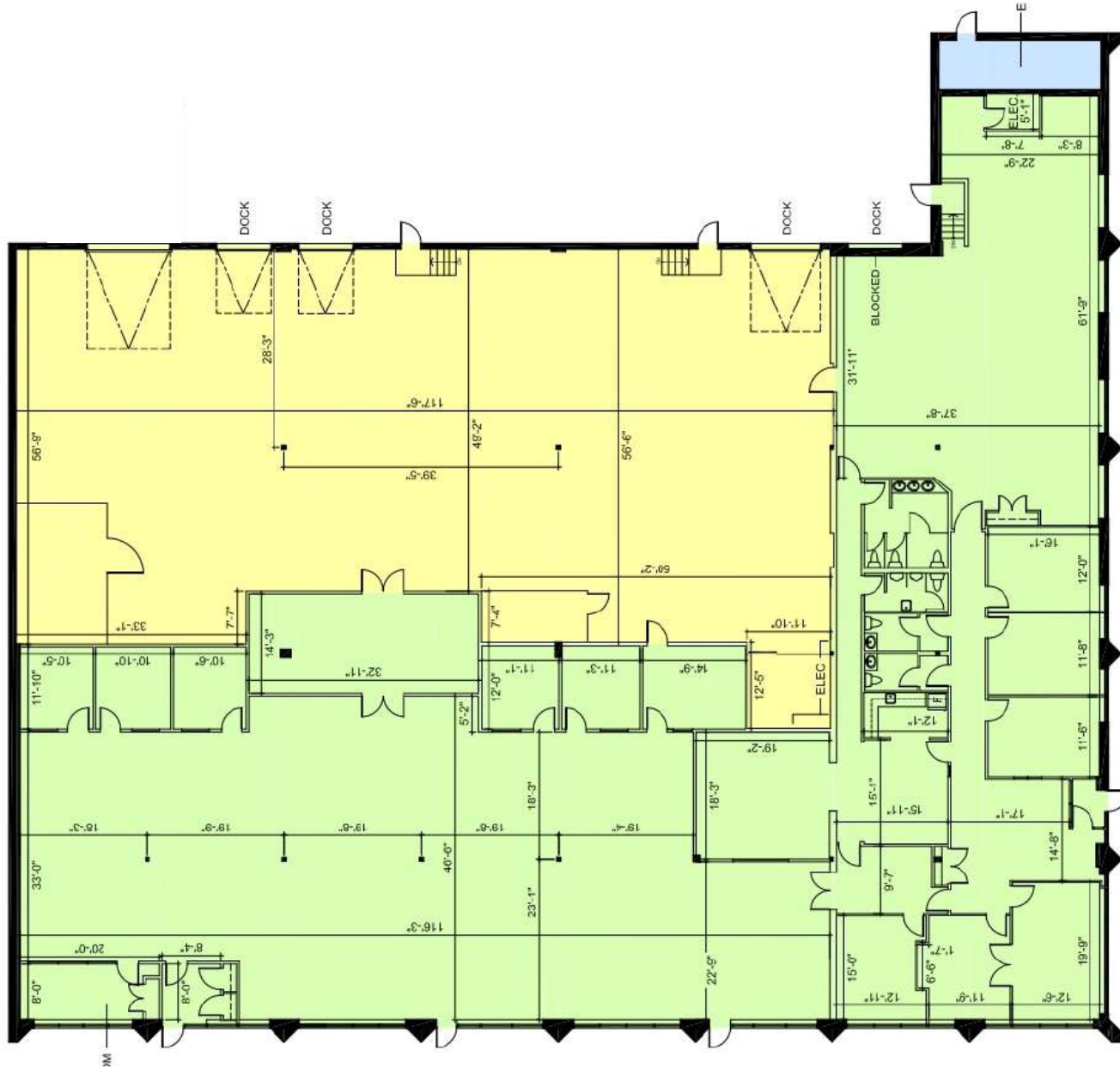
Available: Immediate

Asking Rate: \$19.95 Net PSF

Additional Rent: \$5.78 PSF

FLOOR PLAN

6601 KITIMAT ROAD, MISSISSAUGA





CONTACT

RICHARD BURTON

Associate Vice President

+1 519 362 7197

richard.burton@cushwake.com

PRABH RATRA

Senior Associate

+1 236 869 2199

prabh.ratra@cushwake.com



©2024 Cushman & Wakefield. All rights reserved. The material in this presentation has been prepared solely for information purposes, and is strictly confidential. Any disclosure, use, copying or circulation of this presentation (or the information contained within it) is strictly prohibited, unless you have obtained Cushman & Wakefield's prior written consent. The views expressed in this presentation are the views of the author and do not necessarily reflect the views of Cushman & Wakefield. Neither this presentation nor any part of it shall form the basis of, or be relied upon in connection with any offer, or act as an inducement to enter into any contract or commitment whatsoever. NO REPRESENTATION OR WARRANTY IS GIVEN, EXPRESS OR IMPLIED, AS TO THE ACCURACY OF THE INFORMATION CONTAINED WITHIN THIS PRESENTATION, AND CUSHMAN & WAKEFIELD IS UNDER NO OBLIGATION TO SUBSEQUENTLY CORRECT IT IN THE EVENT OF ERRORS.