



[View Property Video](#)

# PUBLIC SQUARE RETAIL SPACE AVAILABLE

FOR LEASE | 140 PUBLIC SQUARE, CLEVELAND, OHIO 44114

# 140 PUBLIC SQUARE



## PROPERTY HIGHLIGHTS

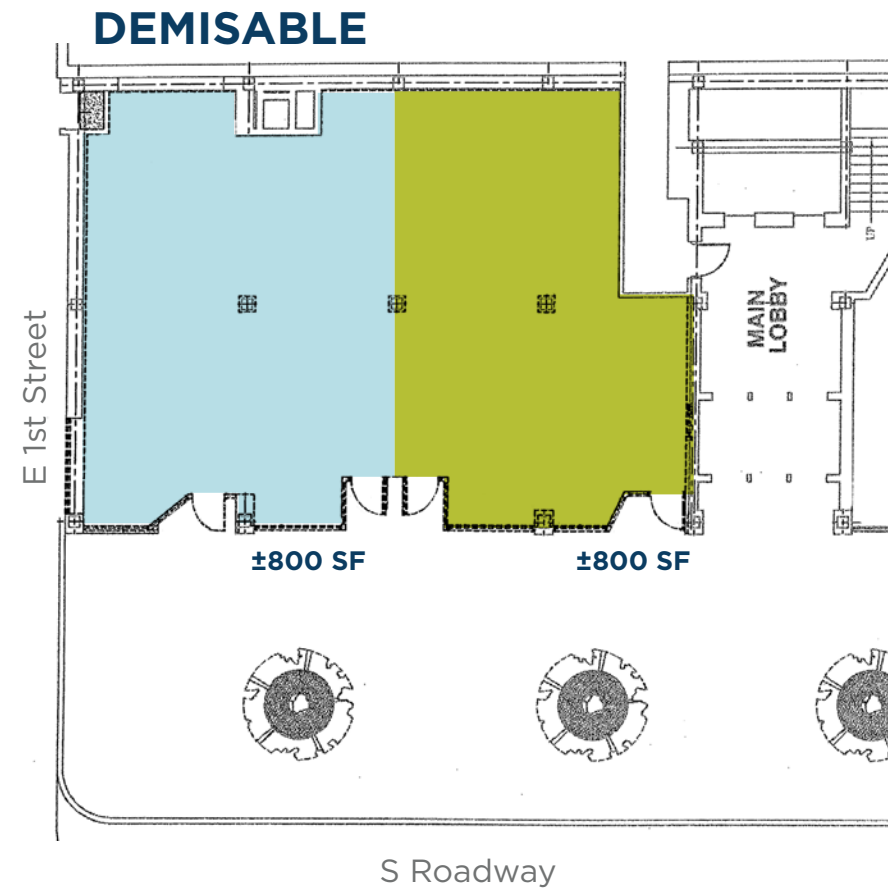
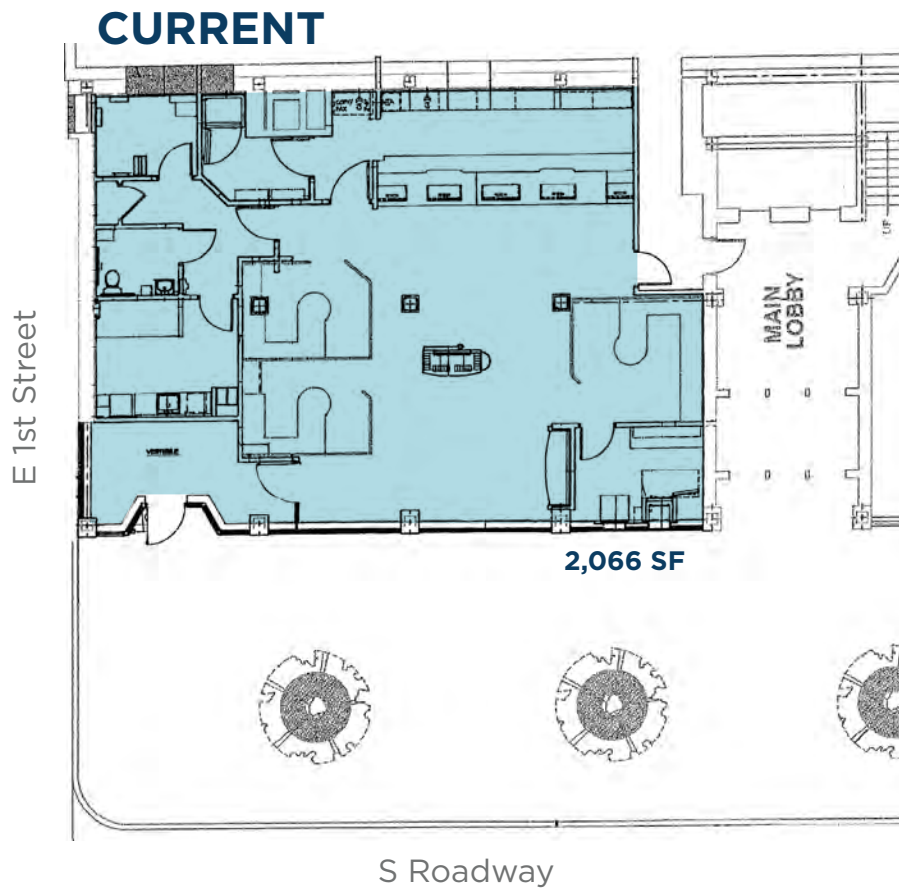
An exciting opportunity to move your business to the heart of downtown Cleveland! Just steps from historic Public Square, this 2,066 square foot retail space is now available. Previously utilized as a bank, this space offers flexible usage options and is ready to be transformed to suit your business needs.

With prime access to public transit, surrounded by by Cleveland's best restaurants, shops and entertainment, including Rocket Mortgage Fieldhouse, Progressive Field and Huntington Bank Field, this location guarantees a steady flow of foot traffic. Whether you're looking to open a boutique, cafe, or professional office, the energy of downtown Cleveland will keep your business front and center.

**AVAILABLE:** Suite 1 - 2,066 SF (*Divisible to 800 SF*)

**LEASE RATE:** \$35.00/SF - \$50.00/SF MG

# FLOOR PLAN







**86,382**  
Population  
(2024 | 3 Mile)

**32.9**  
Median Age  
(2024 | 3 Mile)

**42,069**  
Households  
(2024 | 3 Mile)

**\$74,707**  
Household Income  
(2024 | 3 Mile)

**6,849**  
Total Businesses  
(2024 | 3 Mile)

**110,447**  
Total Employees  
(2024 | 3 Mile)



# DOWNTOWN CLEVELAND

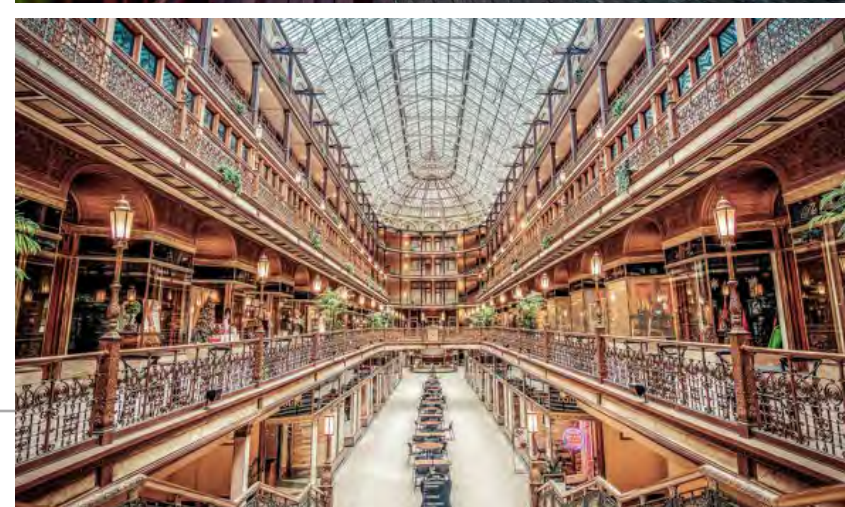
Cleveland is a city located in northeastern Ohio on the southern shore of Lake Erie. It is the second-largest city in Ohio and the center of the Cleveland metropolitan area, which has a population of over 2 million people.

Cleveland has a rich history, and is known for its cultural and sporting events, as well as its universities and medical facilities. The city is home to several major professional sports teams, including the Cleveland Indians (baseball), Cleveland Browns (football), and Cleveland Cavaliers (basketball). It also has a vibrant arts and music scene, with several world-class museums, theater companies, and music venues.

One of the most popular attractions in Cleveland is the Rock and Roll Hall of Fame, which celebrates the history of rock music and its impact on popular culture. The city is also home to the Cleveland Museum of Art, the Cleveland Orchestra, and the Cleveland Play House.

If you're interested in outdoor activities, Cleveland has several parks and green spaces, including the Cleveland Metroparks, which offer hiking, biking, and picnicking opportunities. The city is also located on the shores of Lake Erie, which provides opportunities for boating, fishing, and swimming.

Overall, Cleveland is a dynamic and vibrant city with a lot to offer visitors. Whether you're interested in sports, arts, or the outdoors, there's something for everyone in Cleveland.



# PUBLIC SQUARE RETAIL SPACE AVAILABLE

FOR LEASE | 140 PUBLIC SQUARE, CLEVELAND, OHIO 44114

**CONOR COAKLEY**

Senior Vice President

[ccoakley@crescorealestate.com](mailto:ccoakley@crescorealestate.com)

+1 216 232 4102

**AUSTIN LOVE**

Associate

[alove@crescorealestate.com](mailto:alove@crescorealestate.com)

+1 216 525 1395

**Cushman & Wakefield | CRESCO**

6100 Rockside Woods Blvd, Suite 200

Cleveland, OH 44131

[crescorealestate.com](http://crescorealestate.com)



©2024 Cushman & Wakefield. All rights reserved. The information contained in this communication is strictly confidential. This information has been obtained from sources believed to be reliable but has not been verified. NO WARRANTY OR REPRESENTATION, EXPRESS OR IMPLIED, IS MADE AS TO THE CONDITION OF THE PROPERTY (OR PROPERTIES) REFERENCED HEREIN OR AS TO THE ACCURACY OR COMPLETENESS OF THE INFORMATION CONTAINED HEREIN, AND SAME IS SUBMITTED SUBJECT TO ERRORS, OMISSIONS, CHANGE OF PRICE, RENTAL OR OTHER CONDITIONS, WITHDRAWAL WITHOUT NOTICE, AND TO ANY SPECIAL LISTING CONDITIONS IMPOSED BY THE PROPERTY OWNER(S). ANY PROJECTIONS, OPINIONS OR ESTIMATES ARE SUBJECT TO UNCERTAINTY AND DO NOT SIGNIFY CURRENT OR FUTURE PROPERTY PERFORMANCE.