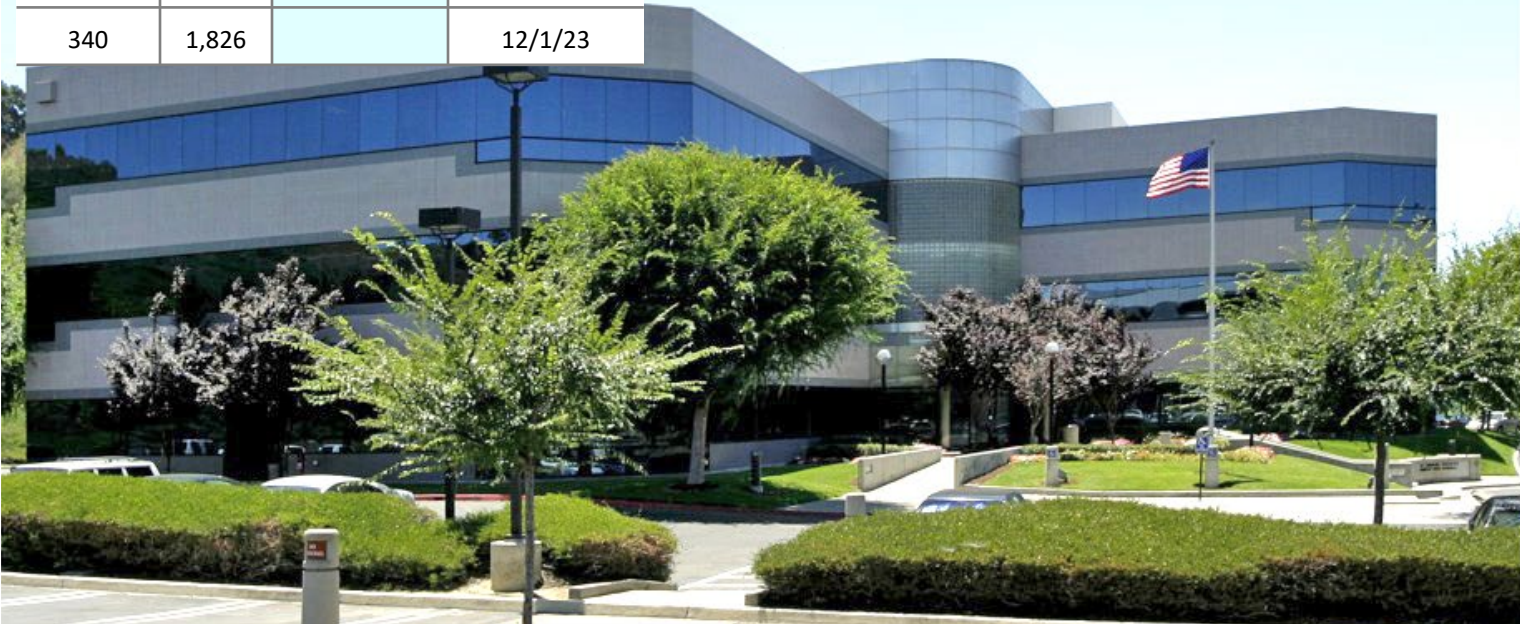


21660 COPLEY DRIVE

Diamond Bar, California

| SUITE | RSF | Virtual Tour | AVAILABILITY |
|-------|-------|--------------|--------------|
| 100 | 3,146 | | Now |
| 340 | 1,826 | | 12/1/23 |

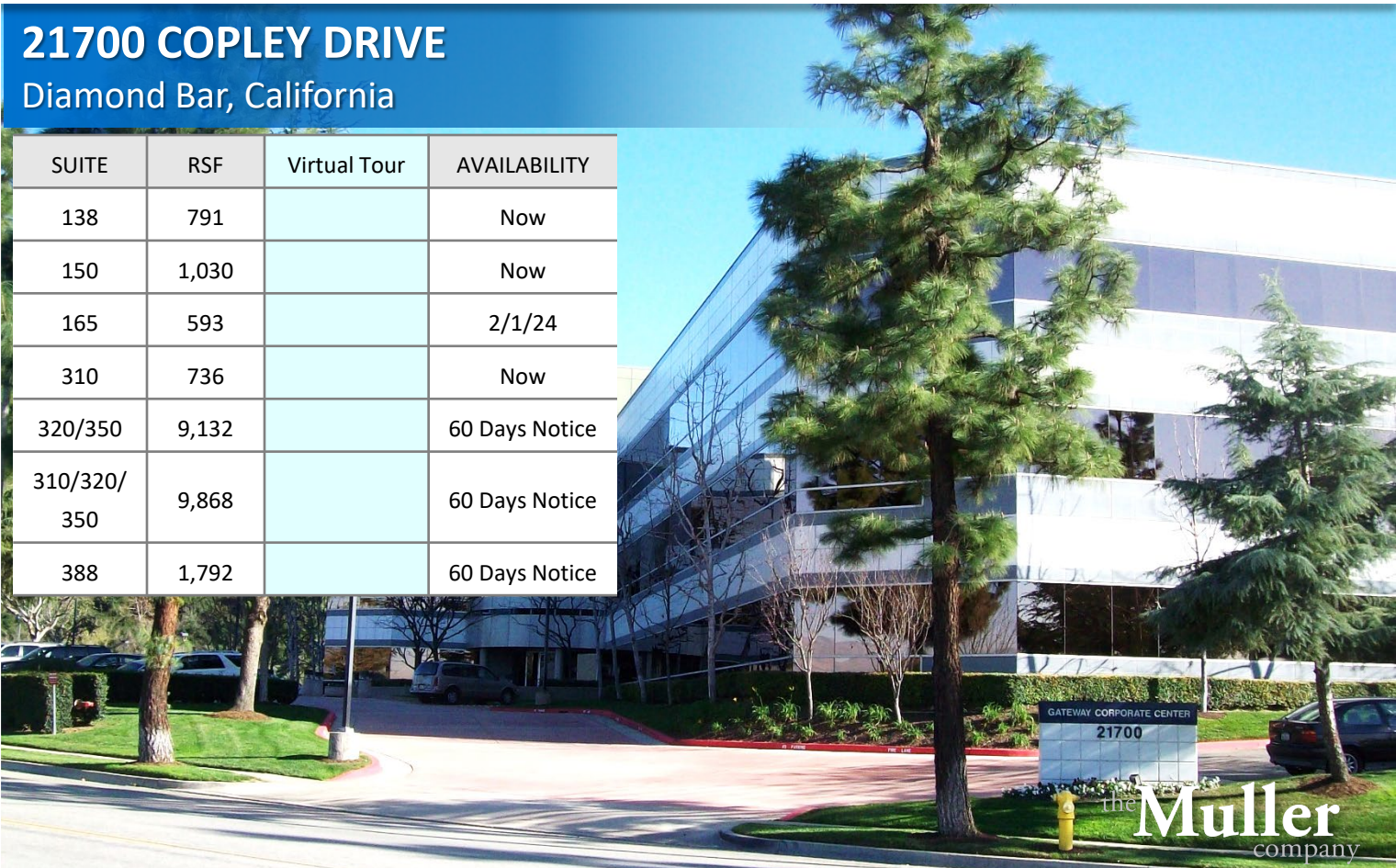
LEASE OPPORTUNITY



21700 COPLEY DRIVE

Diamond Bar, California

| SUITE | RSF | Virtual Tour | AVAILABILITY |
|-----------------|-------|--------------|----------------|
| 138 | 791 | | Now |
| 150 | 1,030 | | Now |
| 165 | 593 | | 2/1/24 |
| 310 | 736 | | Now |
| 320/350 | 9,132 | | 60 Days Notice |
| 310/320/ 350 | 9,868 | | 60 Days Notice |
| 388 | 1,792 | | 60 Days Notice |



For leasing information,
please contact:

SEAN KERN | 909.942.4691
Senior Director
sean.kern@cushwake.com
Lic. # 01377294

RYAN RUSSELL | 909.942.4697
Director
ryan.russell@cushwake.com
Lic. #01505274

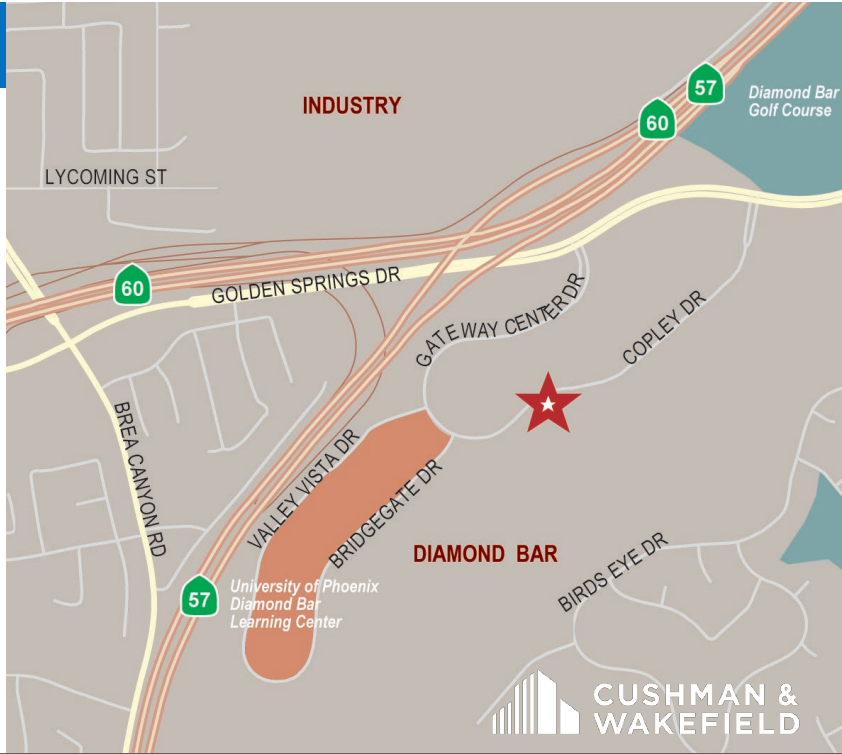
21660 & 21700 COPLEY DRIVE

Diamond Bar, California



FEATURES & AMENITIES:

- Lease Rate: \$2.90 FSG
- Parking 4:1000
- 3-story building located in a master-planned, 255-acre business park designed for corporate headquarters
- Dramatic Presence
- Lush Landscaping
- Centrally Located – Gateway to four counties
- Located Minutes from the 10, 57, 71 & 60 Freeways
- Close to Ontario International Airport, hotels, restaurants, business services and retail



No warranty or representation, express or implied, is made as to the accuracy of the information contained herein, and same is submitted subject to errors omissions, change of price, rental or other conditions, withdrawal without notice, and to any specific listing conditions, imposed by our principals.



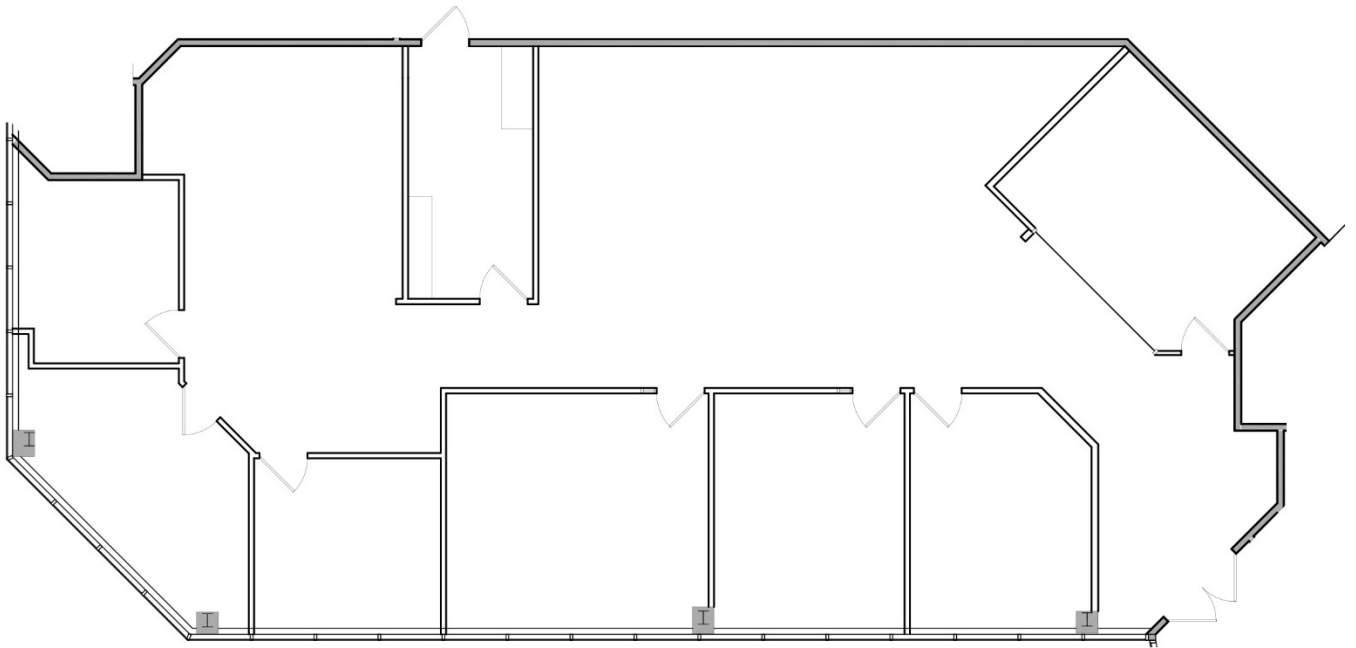
21660 COPLEY DRIVE

Diamond Bar, California

Suite 100

3,146 SF

GATEWAY CORPORATE CENTER



For leasing information,
please contact:

SEAN KERN | 909.942.4691
Senior Director
sean.kern@cushwake.com
Lic. # 01377294

RYAN RUSSELL | 909.942.4697
Director
ryan.russell@cushwake.com
Lic. #01505274





21660 COPLEY DRIVE

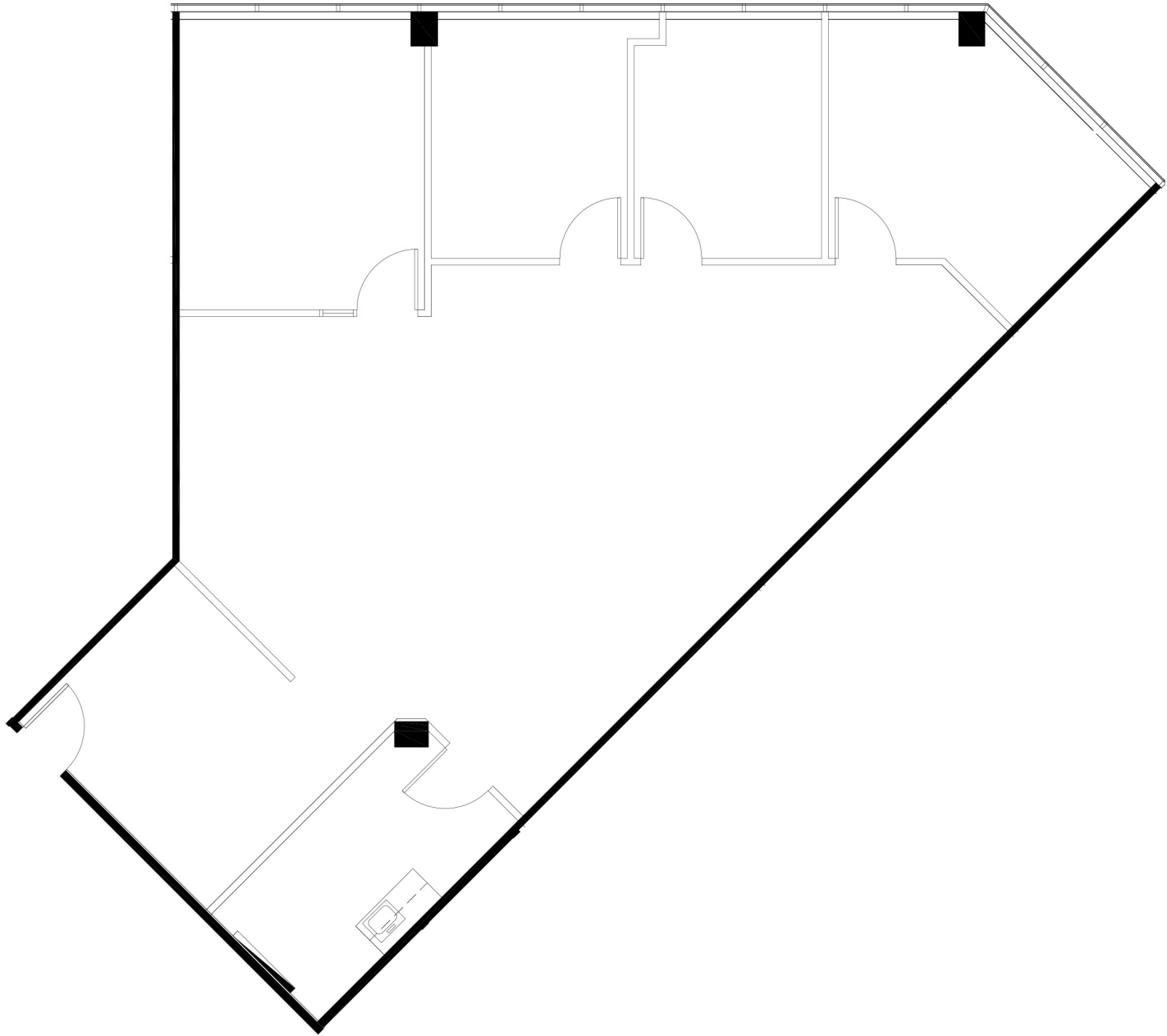
Diamond Bar, California

SUITE 340

1,826 SF

12/1/23

GATEWAY CORPORATE CENTER



For leasing information,
please contact:

SEAN KERN | 909.942.4691
Senior Director
sean.kern@cushwake.com
Lic. # 01377294

RYAN RUSSELL | 909.942.4697
Director
ryan.russell@cushwake.com
Lic. #01505274





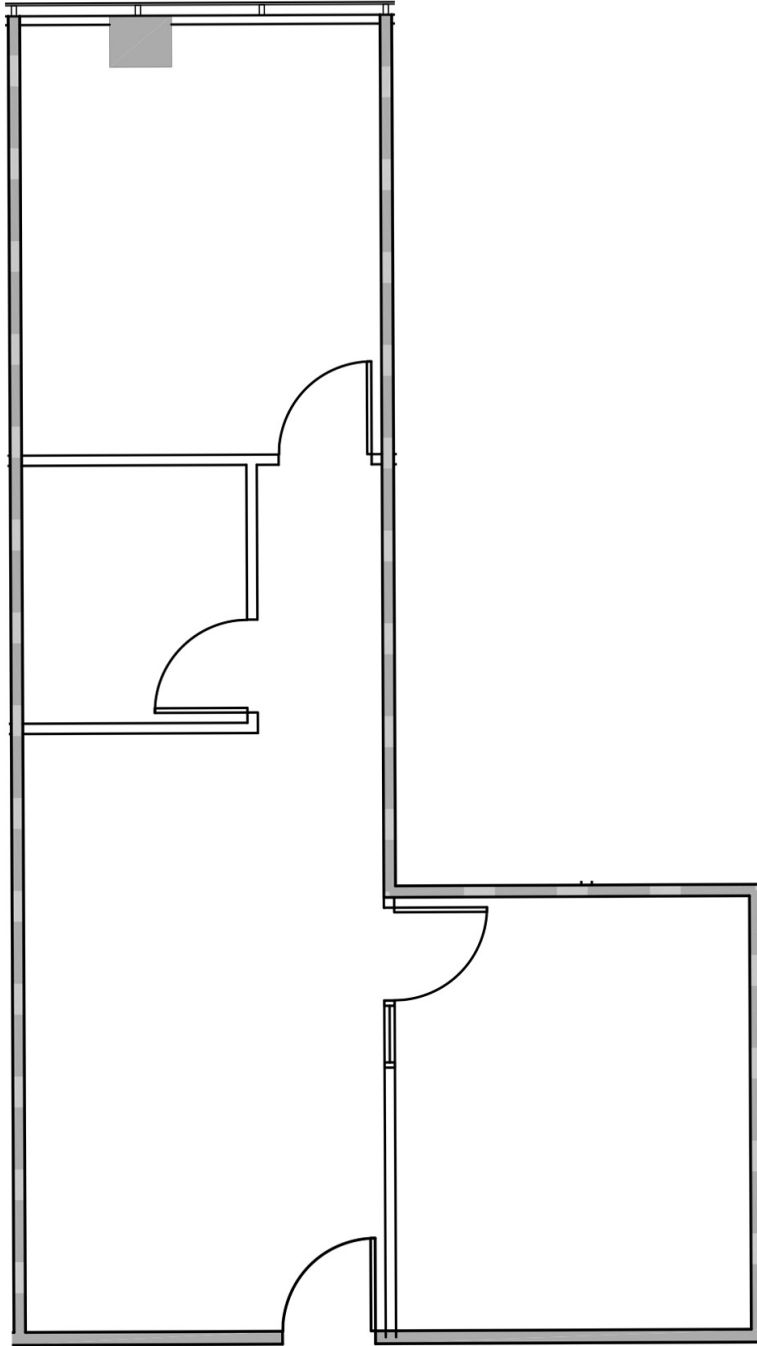
21700 COPLEY DRIVE

Diamond Bar, California

SUITE 138

791 SF

GATEWAY CORPORATE CENTER



For leasing information,
please contact:

SEAN KERN | 909.942.4691
Senior Director
sean.kern@cushwake.com
Lic. # 01377294

RYAN RUSSELL | 909.942.4697
Director
ryan.russell@cushwake.com
Lic. #01505274





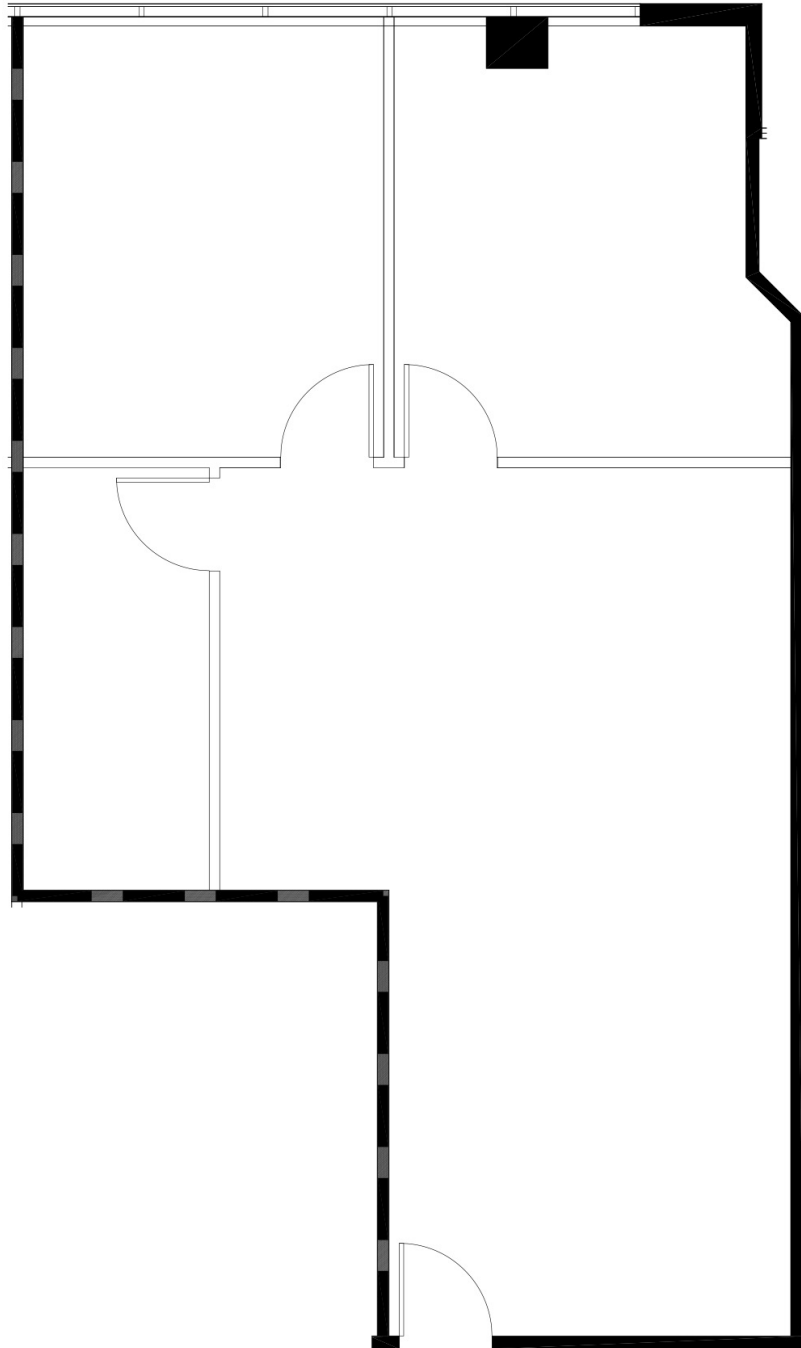
21700 COPLEY DRIVE

Diamond Bar, California

SUITE 150

1,030 SF

GATEWAY CORPORATE CENTER



For leasing information,
please contact:

SEAN KERN | 909.942.4691
Senior Director
sean.kern@cushwake.com
Lic. # 01377294

RYAN RUSSELL | 909.942.4697
Director
ryan.russell@cushwake.com
Lic. #01505274





21700 COPLEY DRIVE

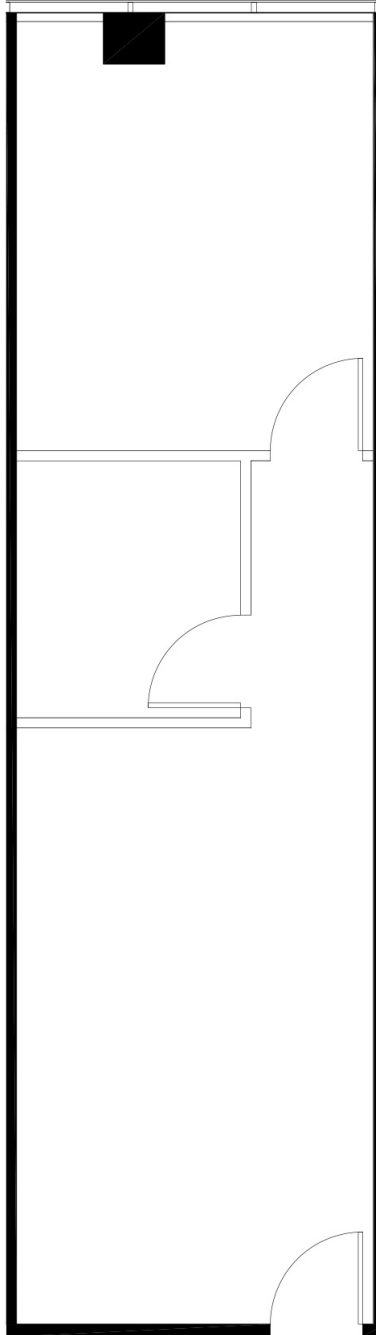
Diamond Bar, California

SUITE 165

593 SF

2/1/24

GATEWAY CORPORATE CENTER



For leasing information,
please contact:

SEAN KERN | 909.942.4691
Senior Director
sean.kern@cushwake.com
Lic. # 01377294

RYAN RUSSELL | 909.942.4697
Director
ryan.russell@cushwake.com
Lic. #01505274





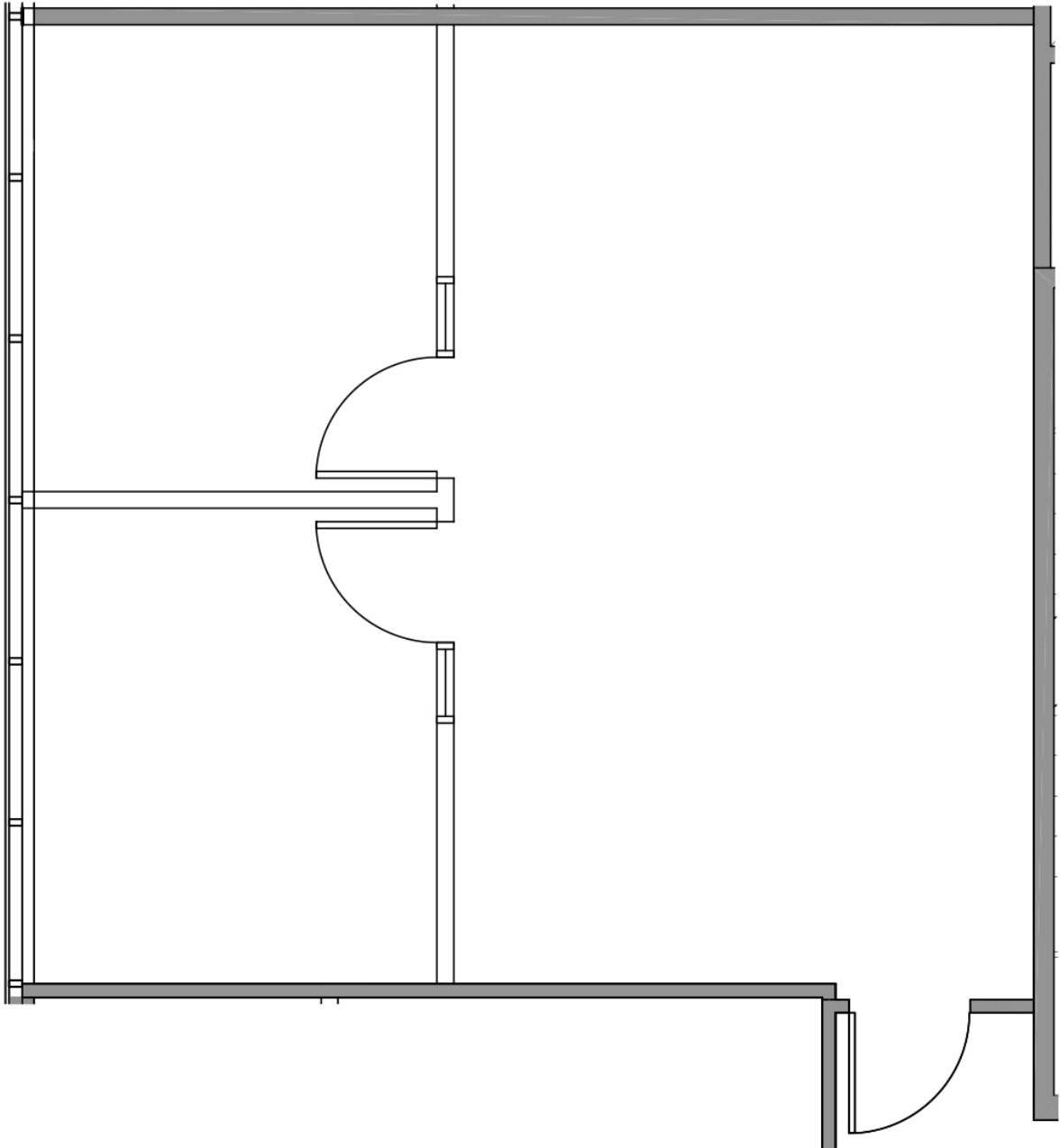
21700 COPLEY DRIVE

Diamond Bar, California

SUITE 310

736 SF

GATEWAY CORPORATE CENTER



For leasing information,
please contact:

SEAN KERN | 909.942.4691
Senior Director
sean.kern@cushwake.com
Lic. # 01377294

RYAN RUSSELL | 909.942.4697
Director
ryan.russell@cushwake.com
Lic. #01505274





21700 COPLEY DRIVE

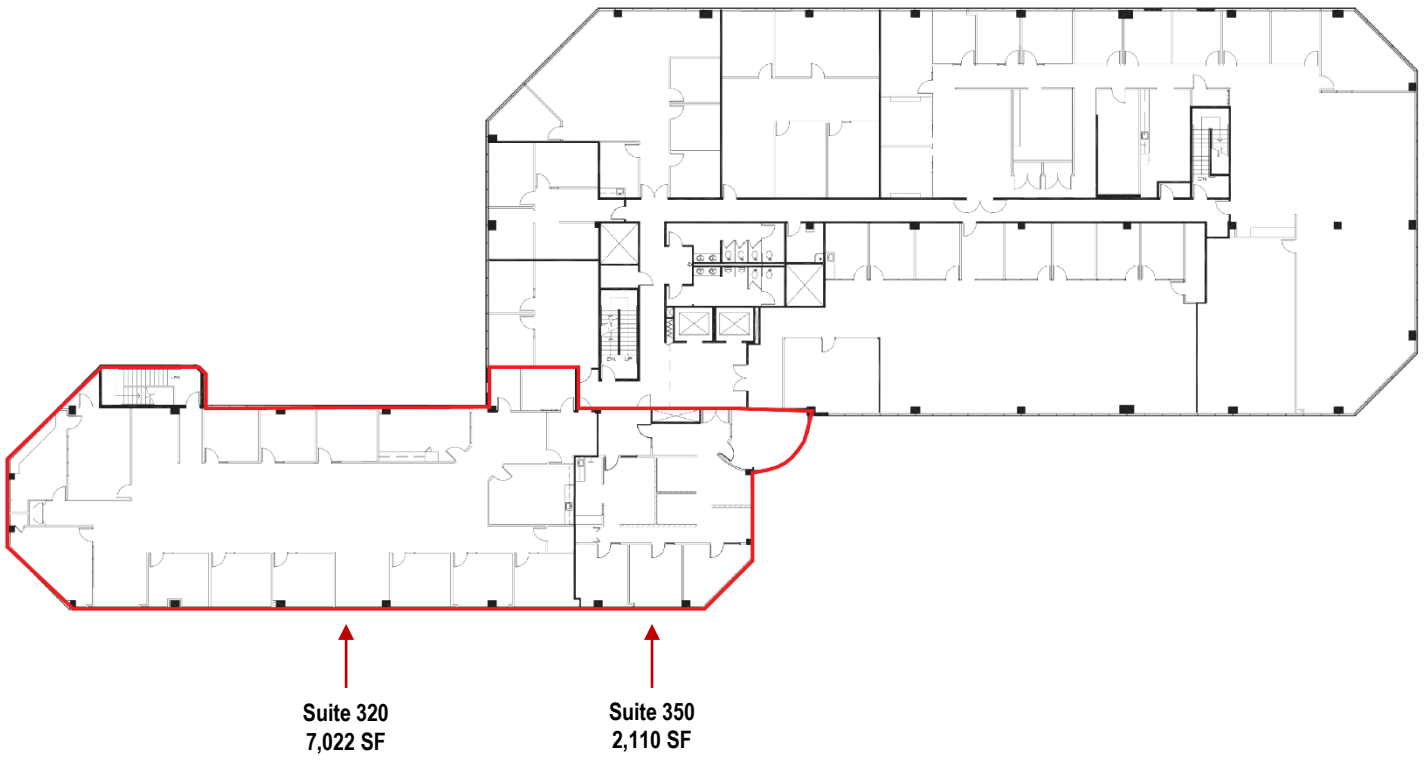
Diamond Bar, California

SUITE 320/350

9,132 SF

60 Days Notice

GATEWAY CORPORATE CENTER



Suite 320
7,022 SF

Suite 350
2,110 SF

For leasing information,
please contact:

SEAN KERN | 909.942.4691
Senior Director
sean.kern@cushwake.com
Lic. # 01377294

RYAN RUSSELL | 909.942.4697
Director
ryan.russell@cushwake.com
Lic. #01505274





21700 COPLEY DRIVE

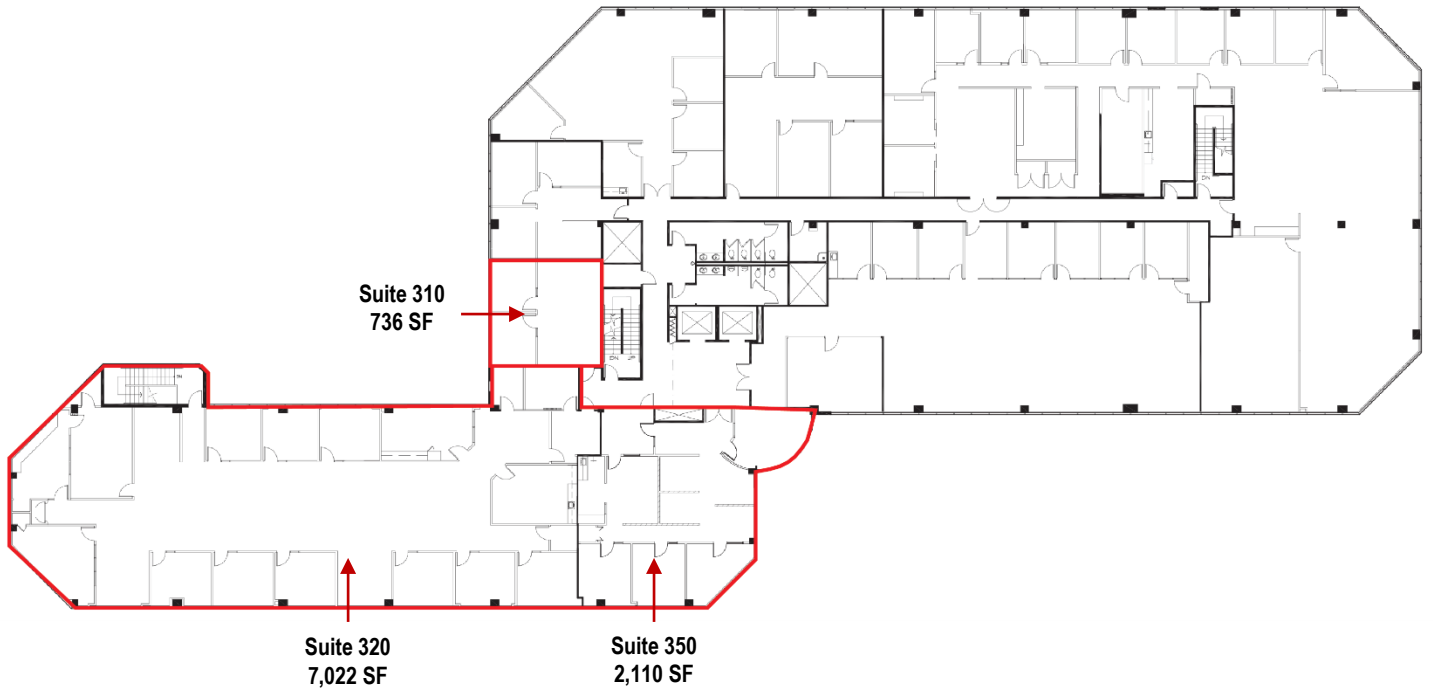
Diamond Bar, California

SUITE 310/320/350

9,868 SF

60 Days Notice

GATEWAY CORPORATE CENTER



For leasing information,
please contact:
SEAN KERN | 909.942.4691
Senior Director
sean.kern@cushwake.com
Lic. # 01377294

RYAN RUSSELL | 909.942.4697
Director
ryan.russell@cushwake.com
Lic. #01505274





21700 COPLEY DRIVE

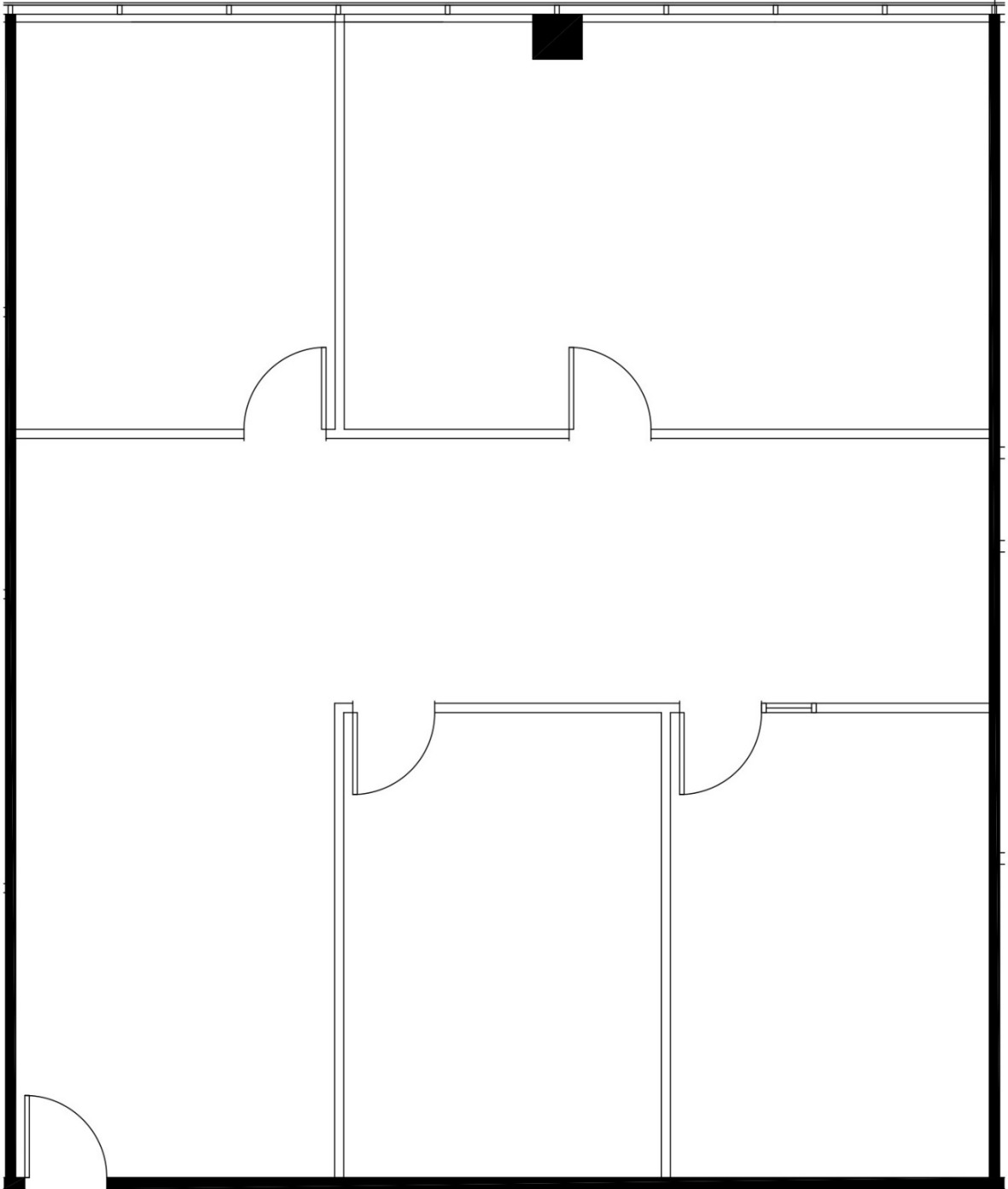
Diamond Bar, California

SUITE 388

1,792 SF

60 Days Notice

GATEWAY CORPORATE CENTER



For leasing information,
please contact:

SEAN KERN | 909.942.4691
Senior Director
sean.kern@cushwake.com
Lic. # 01377294

RYAN RUSSELL | 909.942.4697
Director
ryan.russell@cushwake.com
Lic. #01505274

