



SIGNAGE

ENTRANCE

20

PRINCE STREET
BETWEEN MOTT &
ELIZABETH STREETS

SPACE INFORMATION

PREMISES

Lower Level 1,800 SF

ASKING RENT

Upon Request

TERM

Sublease thru September 1, 2029

POSSESSION

Immediate

COMMENTS

- Sublease from Marine Layer
- Prime Nolita Location
- Perfect F&B / Speakeasy opportunity in the heart of Nolita
- Potential for longer term

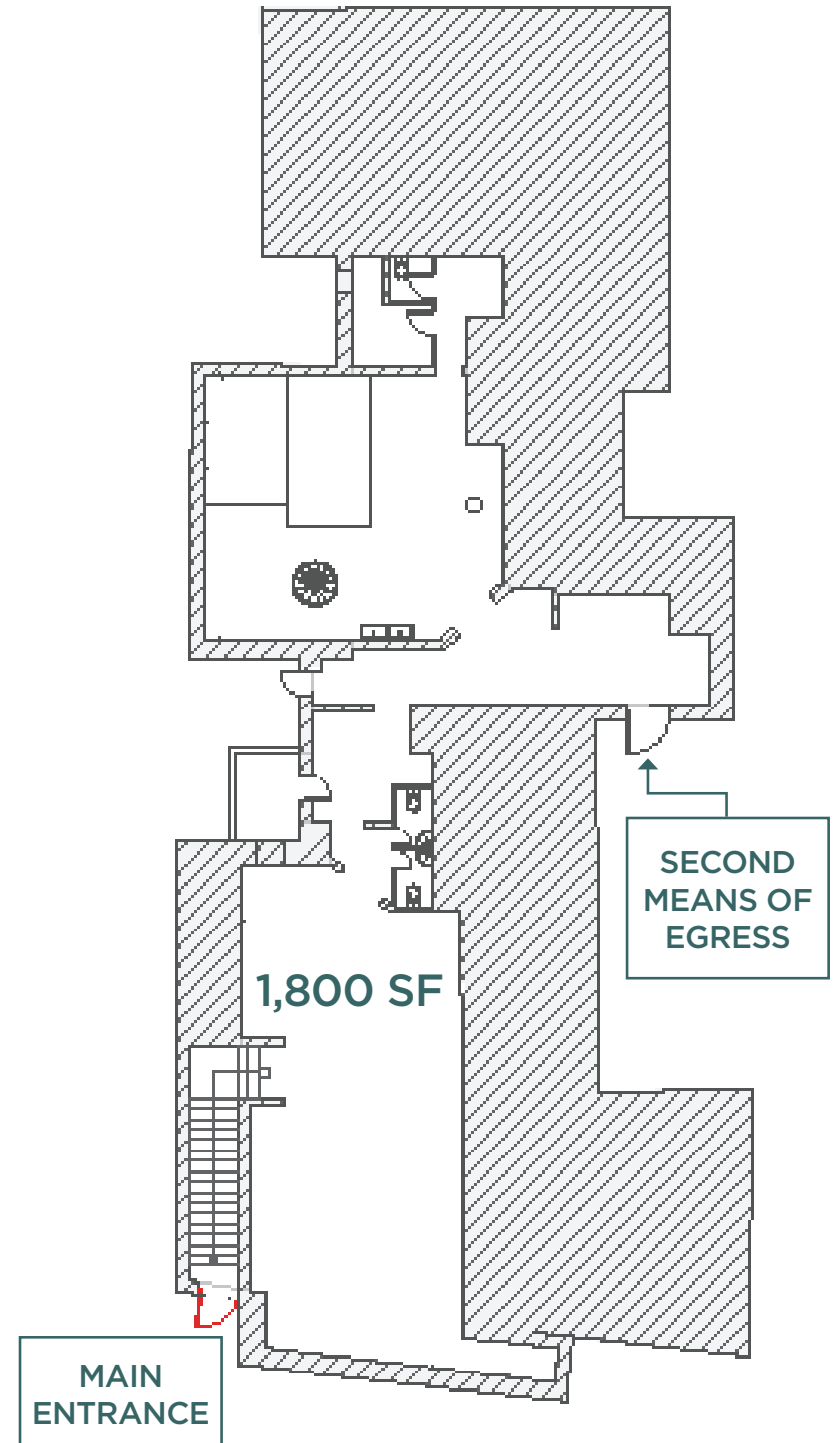
F&B CO-TENANTS

Prince Street Pizza, Cafe Habana, Arabica, Little Cupcake Bakeshop, Cafe Gitane, Milk Bar, Emporio, 7th Street Burger, Grey Dog, Rubirosa

APPAREL / ACCESSORIES CO-TENANTS

Vince, Loeffler Randall, Rothy's, Everland, Cuyana, Isalia, The Ordinary, Le Labo, Buck Mason, Aesop, Faherty

FLOOR PLAN





EAST HOUSTON STREET

LAFAYETTE STREET

JERSEY ST

DAGNE DOVER

illesteva
HANDMADE IN ITALY
AXEL ARIGATO

PRINCE STREET

Sant Ambraeus
LA PECORA BIANCA
Caffè e Cucina

REGINA'S GROCERY

RUBIOSA RISTORANTE

ZEGNA

Ruby's
NYC, EST. 2003

SPRING STREET

JACK'S WIFE BREAD

EATALY
alti cibi

DUANET'cade
by Dagny's
CAVA

NOAH

estela

SOCARRAT
Paella Bar

Pop's Bagels

INA

OLFACTORY
NYC

COCLICO
EST 1991

The Basilica of
St. Patrick's
Old Cathedral

WESH

Juice
press

milk

The Naxos Apothecary

SPACE.NK

BUCK MASON
CUYANA

DIPTYQUE

PRINCE STREET
PIZZA & PUB

Cafe Habana

rag & bone
NEW YORK

Sézane

BUCK MASON

scent bar

KORRES

Aēsop.

ERMININE
credo
PLANT SHED

WHOLE FOODS
MARKET

PRINCE STREET

7TH STREET BURGER

nāti

EMPORIO

THE GREY DOG

AIMÉ LEON DORE

Cafe Leon Dore

VanLeeuwen

taim
RICE TO RICHES

MOTT STREET
EVERLANE

DECHEM
SITE

ONLY HEARTS
Inner Outwear

THE ELK

Tomato

isatis
VINCE ROTHY'S

ELIZABETH STREET
LOEFFLER RANDALL

STUDS
% DRABICKA
Anne Helwig

Supreme

BOWERY
FEIT

LOMBARDI'S
Italian restaurant & wine bar
Secret Marina - Mill Creek

BONDI

WAYAN
BY CEDRIC VONGERICHTEN

EST. 1969
PARISI
Bakery

corcoran
corcoran group real estate

BLACK SEED
HAND ROLLED WOOD FIRED
BAGELS

THE BUTCHER'S DAUGHTER
BREAD, SAUSAGE & CAFE
NEW YORK
LOS ANGELES

Nom Wah

KENMARE STREET

20

PRINCE STREET

JASON GREENSTONE

212 841 7713

JASON.GREENSTONE@CUSHWAKE.COM

TAYLOR REYNOLDS

212 841 5920

TAYLOR.REYNOLDS@CUSHWAKE.COM

MICHAEL O'NEILL

212 841 7909

MICHAEL.ONEILL@CUSHWAKE.COM

LILLY CRAVER

212 698 5616

LILLY.CRAVER@CUSHWAKE.COM

