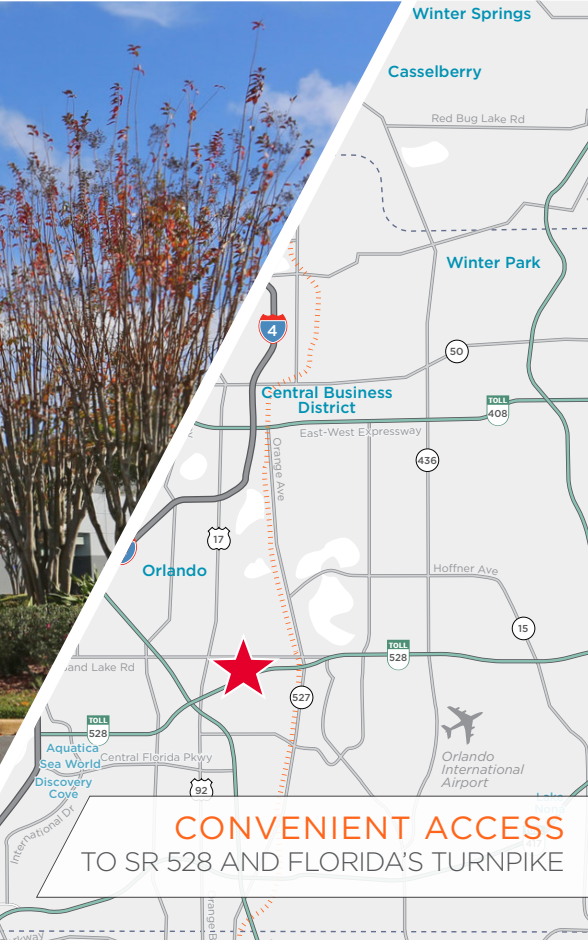


AIRPORT COMMERCE CENTER

1629 PRIME COURT, ORLANDO, FLORIDA 32809



CONVENIENT ACCESS
TO SR 528 AND FLORIDA'S TURNPIKE

4,800 SF AVAILABLE
SUITE 900

SPACE HIGHLIGHTS

ASKING RATE

\$15.95/SF NNN

OPEX**

\$3.95/PSF

MONTHLY RATE*

\$8,159.00

WAREHOUSE SF

2,700 SF

OFFICE SF

±2,100 SF

CLEAR HEIGHT

20'

LOADING DOORS

TWO (2) DOCKS

ZONING

C-3

AVAILABILITY

NOVEMBER 2024

FIRE SUPPRESSION

CLASS III

YEAR BUILT

1997

**Sales Tax Included*
***Denotes Estimated Operating Expenses for 2024*

CONTACT INFORMATION



TAYLOR ZAMBITO

Senior Director
+1 407 541 4409
taylor.zambito@cushwake.com

RYAN HUBBARD

Director
+1 407 541 4390
ryan.hubbard@cushwake.com

JARED BONSHIRE

Executive Managing Director
+1 407 541 4414
jared.bonshire@cushwake.com

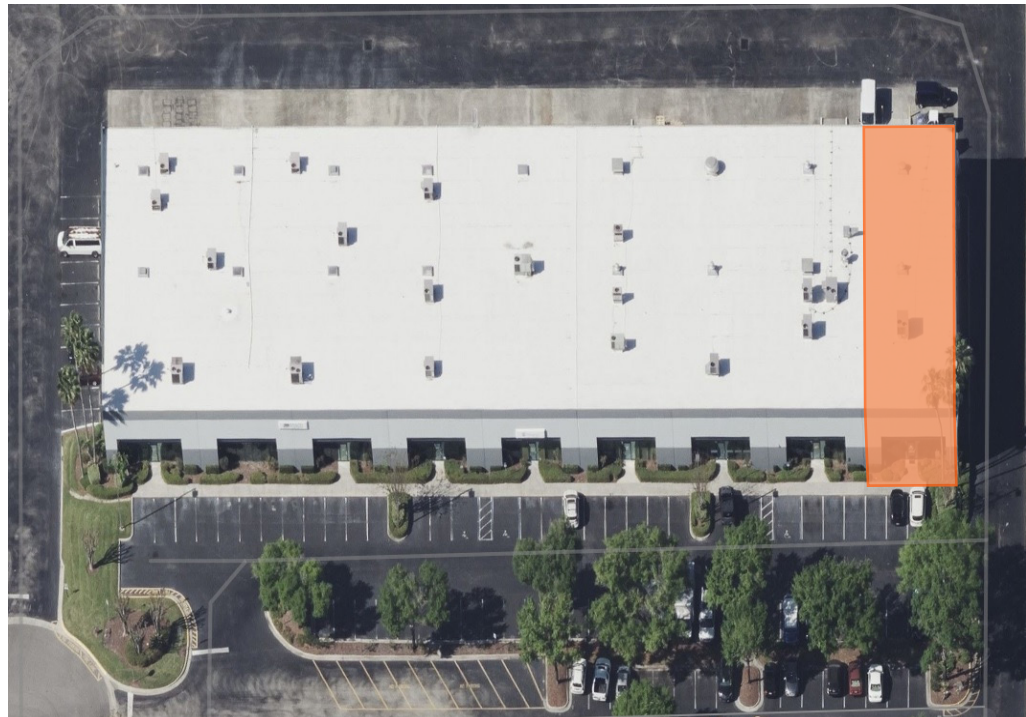
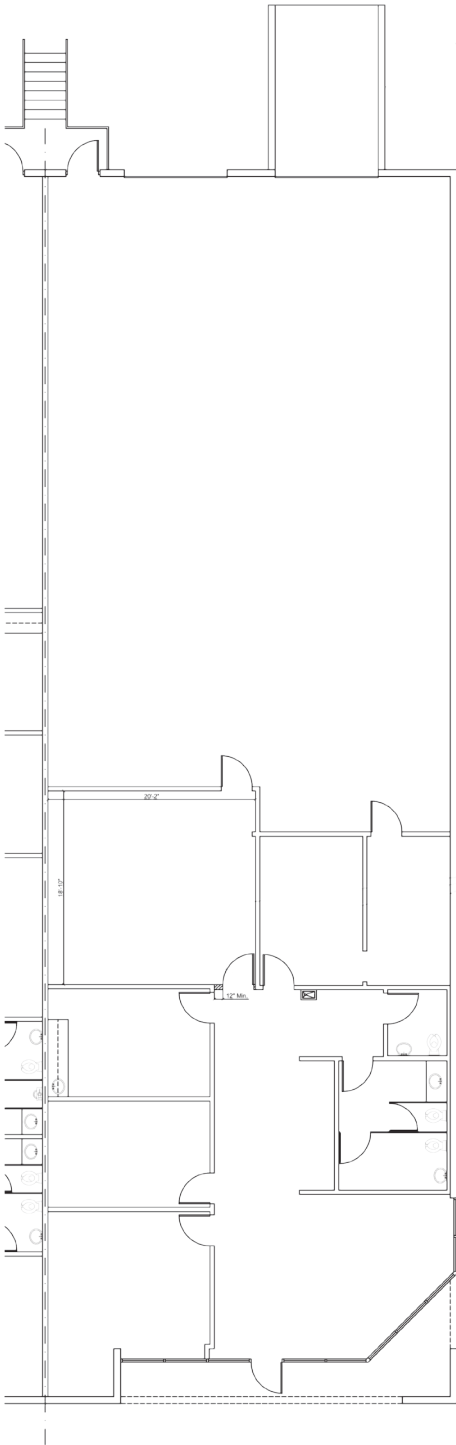
DAVID PEREZ

Executive Managing Director
+1 407 541 4435
david.perez@cushwake.com

©2024 Cushman & Wakefield. All rights reserved. The information contained in this communication is strictly confidential. This information has been obtained from sources believed to be reliable but has not been verified. NO WARRANTY OR REPRESENTATION, EXPRESS OR IMPLIED, IS MADE AS TO THE CONDITION OF THE PROPERTY (OR PROPERTIES) REFERENCED HEREIN OR AS TO THE ACCURACY OR COMPLETENESS OF THE INFORMATION CONTAINED HEREIN, AND SAME IS SUBMITTED SUBJECT TO ERRORS, OMISSIONS, CHANGE OF PRICE, RENTAL OR OTHER CONDITIONS, WITHDRAWAL WITHOUT NOTICE, AND TO ANY SPECIAL LISTING CONDITIONS IMPOSED BY THE PROPERTY OWNER(S). ANY PROJECTIONS, OPINIONS OR ESTIMATES ARE SUBJECT TO UNCERTAINTY AND DO NOT SIGNIFY CURRENT OR FUTURE PROPERTY PERFORMANCE.

SITE LAYOUT

SUITE 900



CONTACT INFORMATION



TAYLOR ZAMBITO

Senior Director
+1 407 541 4409
taylor.zambito@cushwake.com

RYAN HUBBARD

Director
+1 407 541 4390
ryan.hubbard@cushwake.com

JARED BONSHIRE

Executive Managing Director
+1 407 541 4414
jared.bonshire@cushwake.com

DAVID PEREZ

Executive Managing Director
+1 407 541 4435
david.perez@cushwake.com