
1505 5TH AVENUE
SEATTLE, WA



1505 FIFTH

CREATIVE PLUG AND PLAY OFFICE SPACE LOCATED
IN THE HEART OF DOWNTOWN SEATTLE



1505 Fifth

PROPERTY HIGHLIGHTS

1505 Fifth Avenue is a six-story boutique mixed-use building in Seattle's CBD



Shower/locker facilities



Secured Bike storage



Updated Elevator cabs



Efficient floor plates



Within blocks of transit



Convenient access to major arterials



Steps from a variety of dining and retail options



Modern lobby redesign



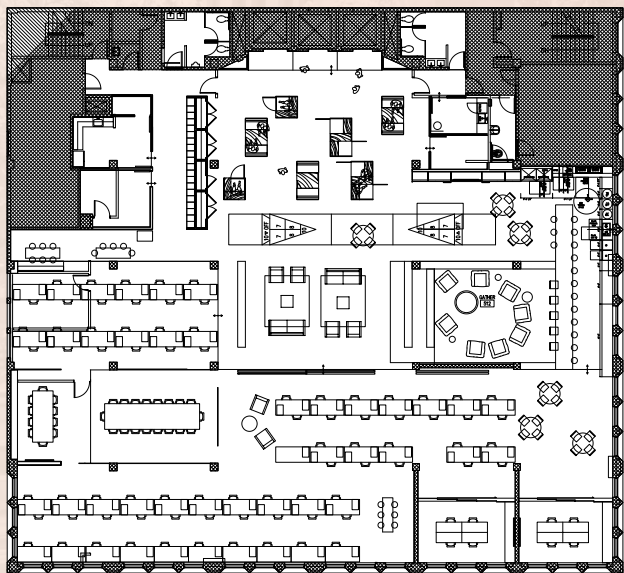
CREATIVE OFFICE SPACE FOR LEASE

FULL FLOOR OPPORTUNITIES IN THE HEART OF THE CBD

PLUG & PLAY WITH FURNITURE IN PLACE

HIGH CEILINGS AND GREAT NATURAL LIGHT

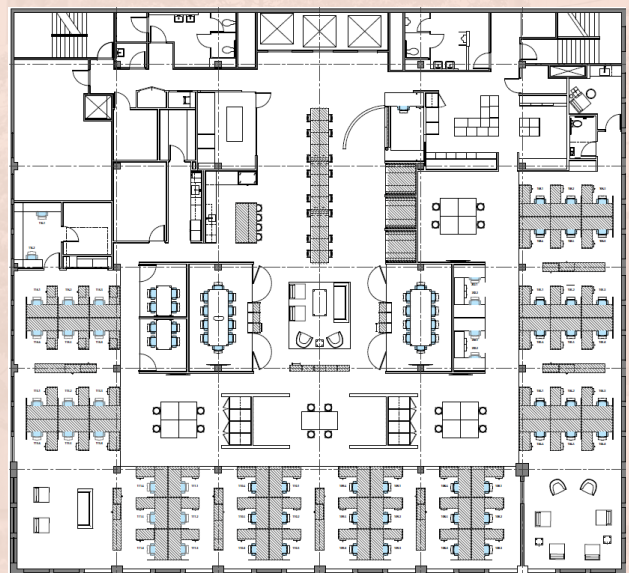
5th Floor | 13,677 SF



PIKE STREET



6th Floor | 13,670 SF



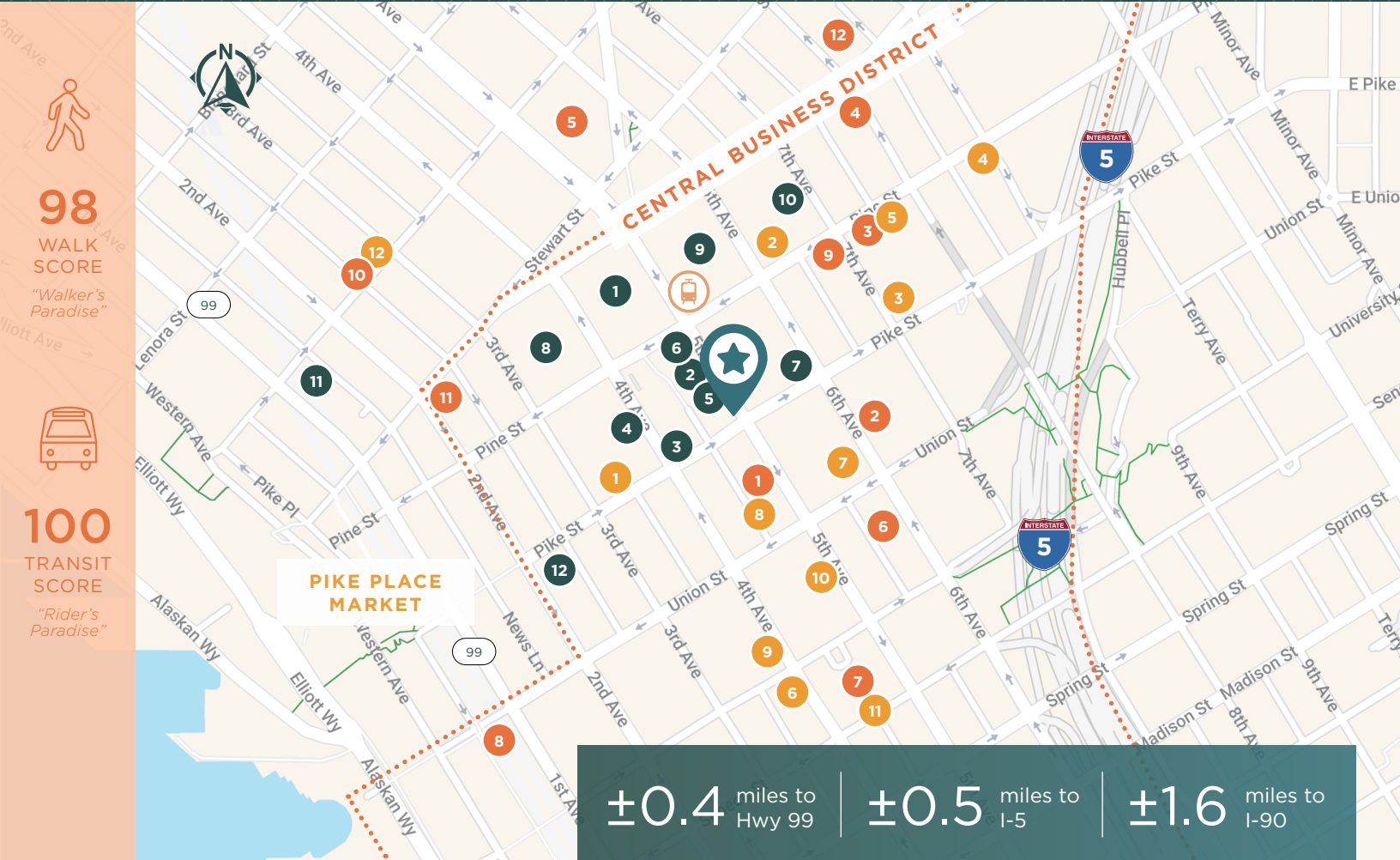
PIKE STREET



[Click here to view virtual tour!](#)

[Click here to view virtual tour!](#)

STRATEGICALLY LOCATED IN THE HEART OF SEATTLE'S DOWNTOWN RETAIL CORE



98
WALK SCORE
"Walker's Paradise"

100
TRANSIT SCORE
"Rider's Paradise"

±0.4 miles to Hwy 99 | ±0.5 miles to I-5 | ±1.6 miles to I-90

LOCATION OVERVIEW



1505 FIFTH AVENUE

| RETAIL | |
|--------|----------------------------|
| 1. | Westlake Center |
| 2. | Anthropologie |
| 3. | Arc'teryx |
| 4. | Dr. Martens |
| 5. | Urban Outfitters |
| 6. | AllSaints |
| 7. | The North Face Pike Street |
| 8. | UNIQLO Pine Street |
| 9. | Nordstrom |
| 10. | Tiffany & Co. |
| 11. | Herman Miller |
| 12. | KÜHL |

| DINING | |
|--------|--------------------------|
| 1. | Yard House |
| 2. | Din Tai Fung |
| 3. | The Cheesecake Factory |
| 4. | Dough Zone™ |
| 5. | Ruth's Chris Steak House |
| 6. | Purple Cafe and Wine Bar |
| 7. | Jimmy John's |
| 8. | Elephant & Castle |
| 9. | The Capital Grille |
| 10. | The Fonte Bar |
| 11. | The George |
| 12. | Shaker + Spear |

| HOTELS | |
|--------|--------------------------|
| 1. | Hilton Motif |
| 2. | Sheraton Grand |
| 3. | Grand Hyatt Seattle |
| 4. | Hyatt At Olive 8 |
| 5. | The Westin |
| 6. | Washington Athletic Club |
| 7. | Fairmont Olympic |
| 8. | Four Seasons |
| 9. | Hotel Theodore |
| 10. | Kimpton Palladian |
| 11. | The Charter |
| 12. | Hyatt Regency |

FOR DETAILS CONTACT:

Leah Masson
Senior Director
+1 206 215 9803
leah.masson@cushwake.com

Brandon Burmeister
Senior Director
+1 206 215 9702
brandon.burmeister@cushwake.com



©2024 Cushman & Wakefield. All rights reserved. The information contained in this communication is strictly confidential. This information has been obtained from sources believed to be reliable but has not been verified. NO WARRANTY OR REPRESENTATION, EXPRESS OR IMPLIED, IS MADE AS TO THE CONDITION OF THE PROPERTY (OR PROPERTIES) REFERENCED HEREIN OR AS TO THE ACCURACY OR COMPLETENESS OF THE INFORMATION CONTAINED HEREIN, AND SAME IS SUBMITTED SUBJECT TO ERRORS, OMISSIONS, CHANGE OF PRICE, RENTAL OR OTHER CONDITIONS, WITHDRAWAL WITHOUT NOTICE, AND TO ANY SPECIAL LISTING CONDITIONS IMPOSED BY THE PROPERTY OWNER(S). ANY PROJECTIONS, OPINIONS OR ESTIMATES ARE SUBJECT TO UNCERTAINTY AND DO NOT SIGNIFY CURRENT OR FUTURE PROPERTY PERFORMANCE.