



Property Highlights

- **138,039 SF**
Class A Office Building
Available for Sale or Lease
- 6.224 +/- acres
- Built in 1989
- Large floor plates
- Excellent visibility from I-40
- Masonry & steel construction
- Zoned 2.02 -
Commercial Services
- Abundant parking

John Schultz
Managing Director
+1 336 812 3301
john.schultz1@cushwake.com

Bobby Finch
Executive Director
+1 336 812 3303
bobby.finch@cushwake.com

121-D Reynolda Village
Winston-Salem, NC 27106 | USA
Main +1 336 668 9999
Fax +1 336 668 0888
cushmanwakefield.com



150 S. Stratford Road
Winston-Salem, NC 27104

**AVAILABLE
FOR SALE OR LEASE**



John Schultz
Managing Director
+1 336 812 3301
john.schultz1@cushwake.com

Bobby Finch
Executive Director
+1 336 812 3303
bobby.finch@cushwake.com

121-D Reynolda Village
Winston-Salem, NC 27106 | USA
Main +1 336 668 9999
Fax +1 336 668 0888
cushmanwakefield.com



150 S. Stratford Road
Winston-Salem, NC 27104

**AVAILABLE
FOR SALE OR LEASE**



John Schultz
Managing Director
+1 336 812 3301
john.schultz1@cushwake.com

Bobby Finch
Executive Director
+1 336 812 3303
bobby.finch@cushwake.com

121-D Reynolda Village
Winston-Salem, NC 27106 | USA
Main +1 336 668 9999
Fax +1 336 668 0888
cushmanwakefield.com



150 S. Stratford Road
Winston-Salem, NC 27104

AVAILABLE
FOR SALE OR LEASE

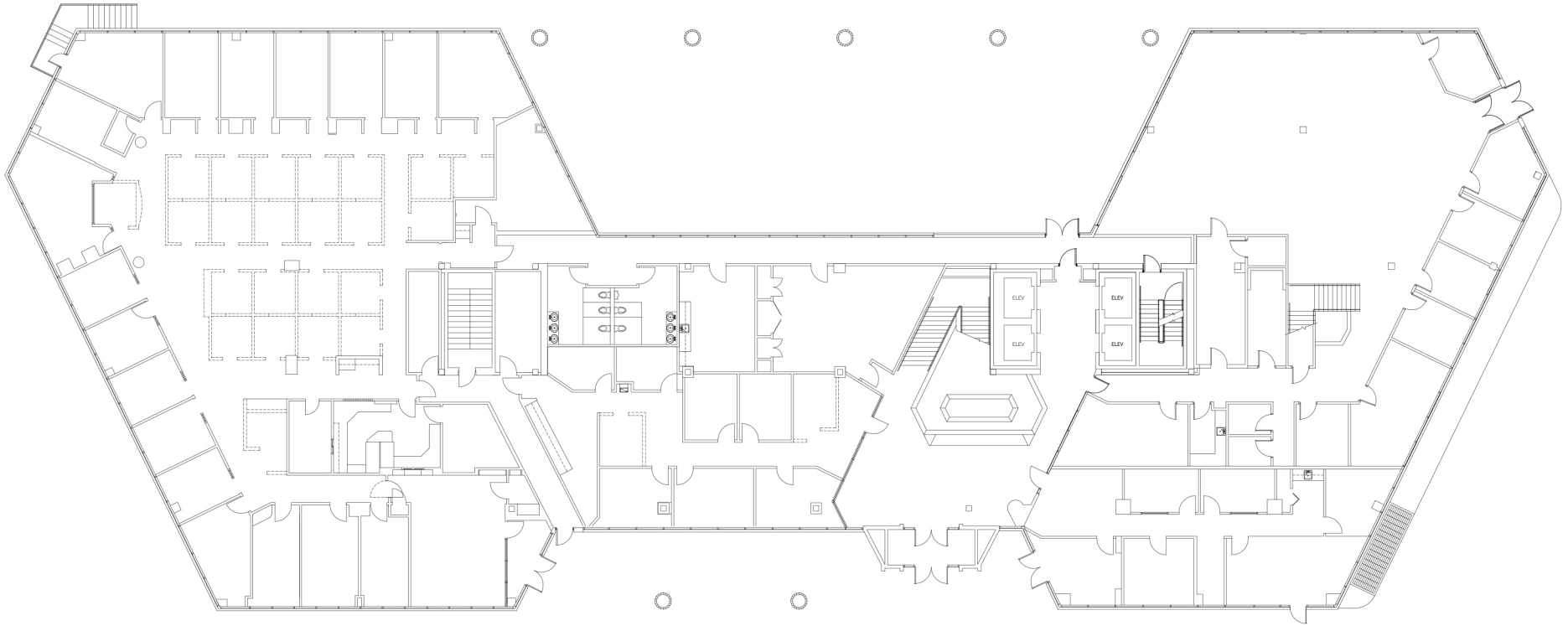


John Schultz
Managing Director
+1 336 812 3301
john.schultz1@cushwake.com

Bobby Finch
Executive Director
+1 336 812 3303
bobby.finch@cushwake.com

121-D Reynolda Village
Winston-Salem, NC 27106 | USA
Main +1 336 668 9999
Fax +1 336 668 0888
cushmanwakefield.com

1ST FLOOR

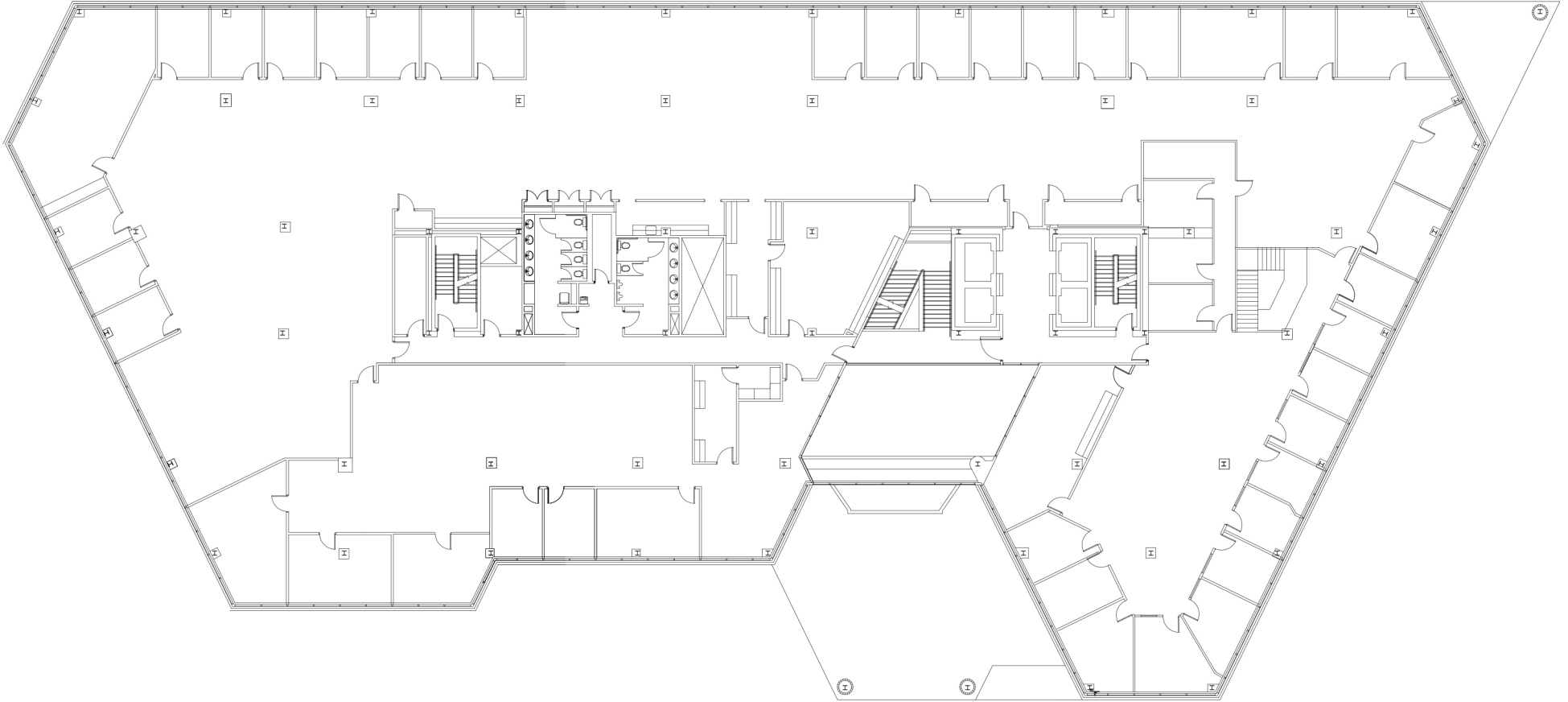


John Schultz
Managing Director
+1 336 812 3301
john.schultz1@cushwake.com

Bobby Finch
Executive Director
+1 336 812 3303
bobby.finch@cushwake.com

121-D Reynolda Village
Winston-Salem, NC 27106 | USA
Main +1 336 668 9999
Fax +1 336 668 0888
cushmanwakefield.com

2ND FLOOR



John Schultz
Managing Director
+1 336 812 3301
john.schultz1@cushwake.com

Bobby Finch
Executive Director
+1 336 812 3303
bobby.finch@cushwake.com

121-D Reynolda Village
Winston-Salem, NC 27106 | USA
Main +1 336 668 9999
Fax +1 336 668 0888
cushmanwakefield.com

3RD FLOOR

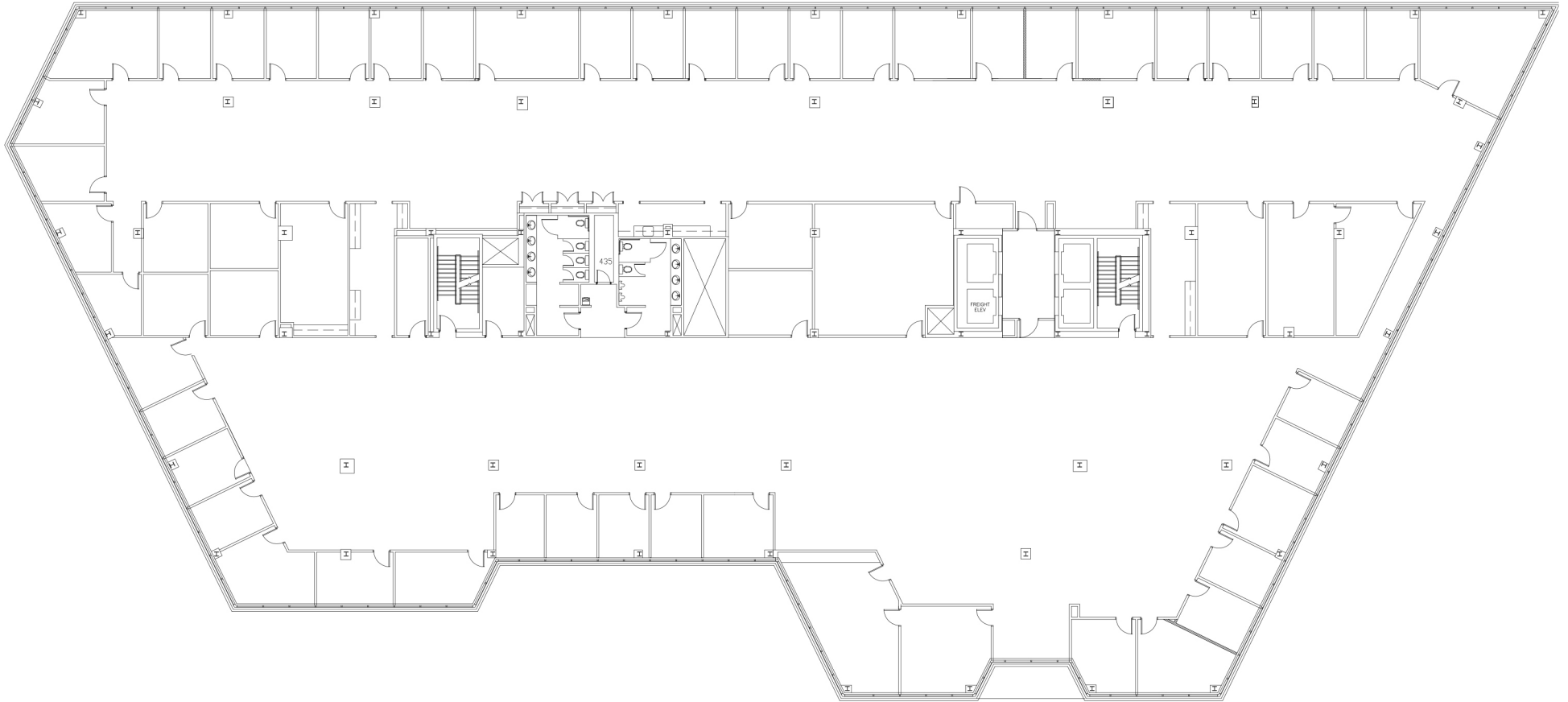


John Schultz
Managing Director
+1 336 812 3301
john.schultz1@cushwake.com

Bobby Finch
Executive Director
+1 336 812 3303
bobby.finch@cushwake.com

121-D Reynolda Village
Winston-Salem, NC 27106 | USA
Main +1 336 668 9999
Fax +1 336 668 0888
cushmanwakefield.com

4TH FLOOR



John Schultz
Managing Director
+1 336 812 3301
john.schultz1@cushwake.com

Bobby Finch
Executive Director
+1 336 812 3303
bobby.finch@cushwake.com

121-D Reynolda Village
Winston-Salem, NC 27106 | USA
Main +1 336 668 9999
Fax +1 336 668 0888
cushmanwakefield.com

5TH FLOOR



John Schultz
Managing Director
+1 336 812 3301
john.schultz1@cushwake.com

Bobby Finch
Executive Director
+1 336 812 3303
bobby.finch@cushwake.com

121-D Reynolda Village
Winston-Salem, NC 27106 | USA
Main +1 336 668 9999
Fax +1 336 668 0888
cushmanwakefield.com