

**UP TO 14,016 RSF MEDICAL OFFICE
FOR LEASE**



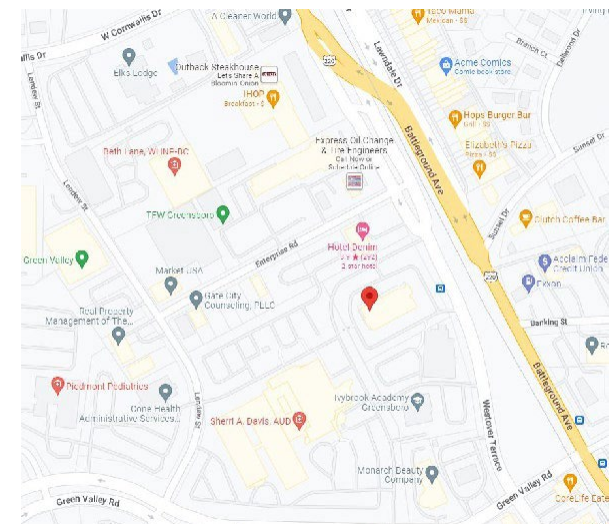
Property Highlights

- Up to 14,016 RSF Available for Lease
- Entire 1st Floor with covered drop-off
- Desirable Green Valley Location
- Excellent Visibility from Westover Terrace
- On-site, Newly Added and Resurfaced Parking (+/-) 179 Spaces
- Lease Rate – Please inquire with listing agents

Kevin Kemp, SIOR
Managing Director
+1 336 812 3307
kevin.kemp@cushwake.com

Raffi Simel, SIOR
Director
+1 336 289 2541
raffi.simel@cushwake.com

628 Green Valley Road, Ste. 202
Greensboro, NC 27408 | USA
Main +1 336 668 9999
Fax +1 336 668 0888
cushmanwakefield.com



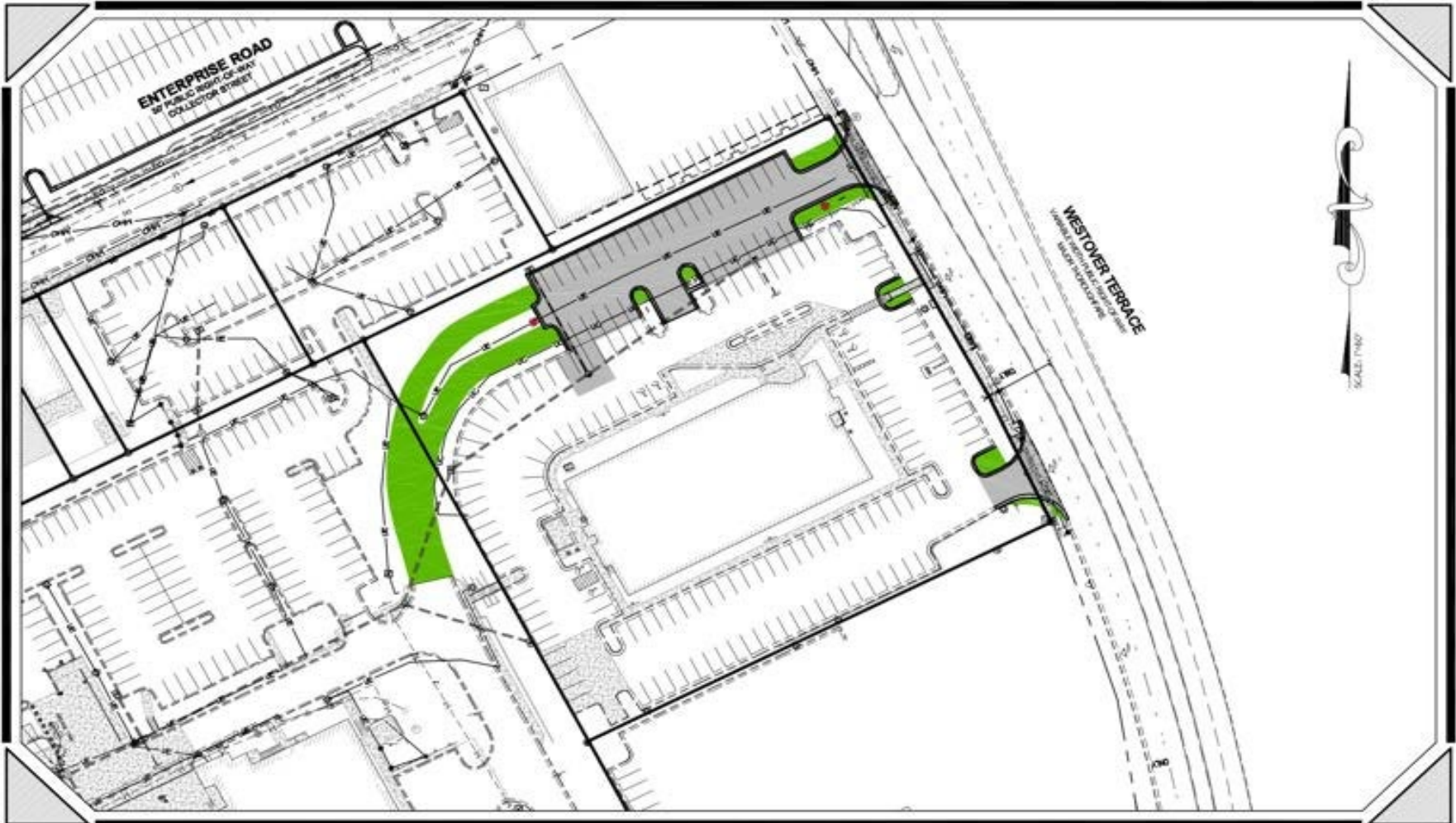


Kevin Kemp, SIOR
Managing Director
+1 336 812 3307
kevin.kemp@cushwake.com

Raffi Simel, SIOR
Director
+1 336 289 2541
raffi.simel@cushwake.com

628 Green Valley Road, Ste. 202
Greensboro, NC 27408 | USA
Main +1 336 668 9999
Fax +1 336 668 0888
cushmanwakefield.com

Site Plan

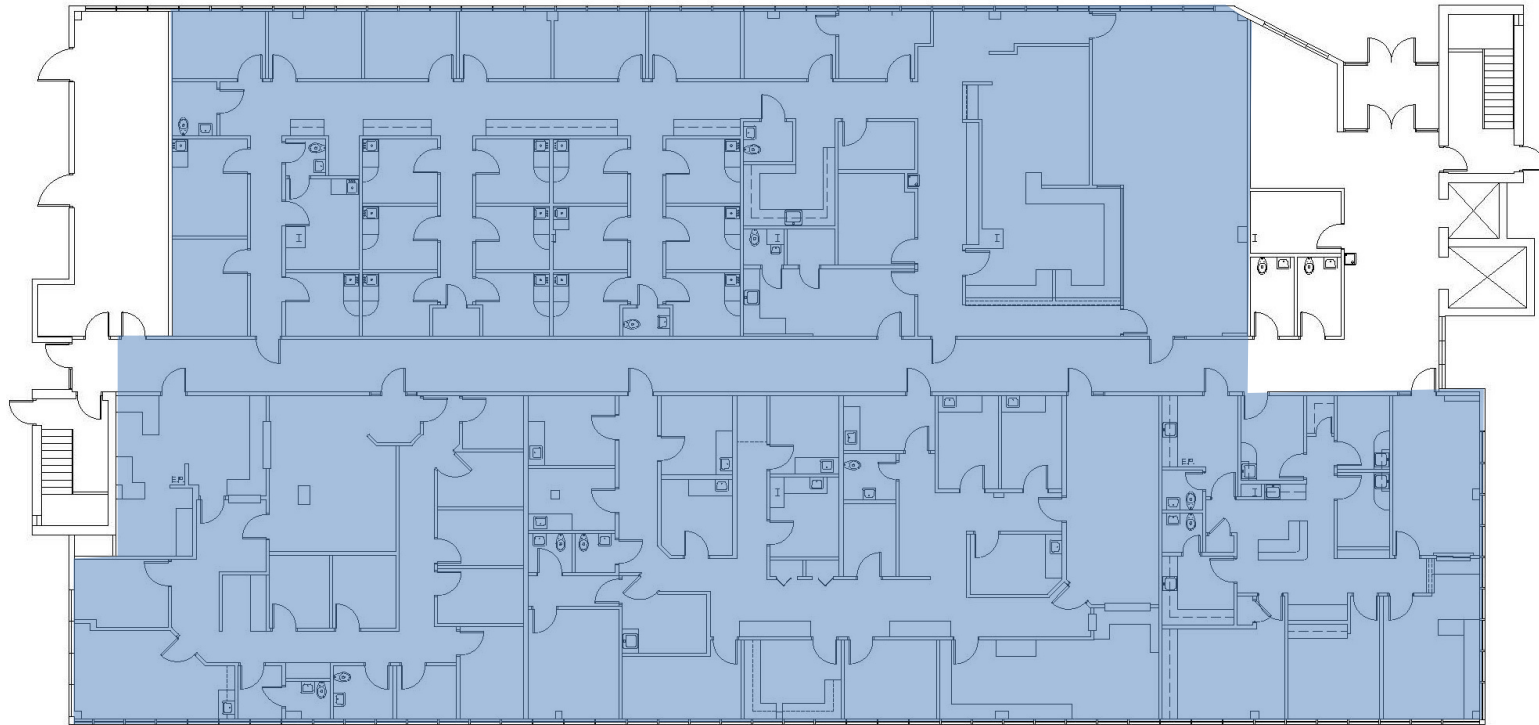


Kevin Kemp, SIOR
Managing Director
+1 336 812 3307
kevin.kemp@cushwake.com

Raffi Simel, SIOR
Director
+1 336 289 2541
raffi.simel@cushwake.com

628 Green Valley Road, Ste. 202
Greensboro, NC 27408
Main +1 336 668 9999
Fax +1 336 668 0888
cushmanwakefield.com

Floor Plan - 1st Floor
14,016 RSF Available



1ST FLOOR AS BUILT

Kevin Kemp, SIOR
Managing Director
+1 336 812 3307
kevin.kemp@cushwake.com

Raffi Simel, SIOR
Director
+1 336 289 2541
raffi.simel@cushwake.com

628 Green Valley Road, Ste. 202
Greensboro, NC 27408
Main +1 336 668 9999
Fax +1 336 668 0888
cushmanwakefield.com