



**2175 E. Georgia Road
Simpsonville, SC**

CONTACT INFORMATION

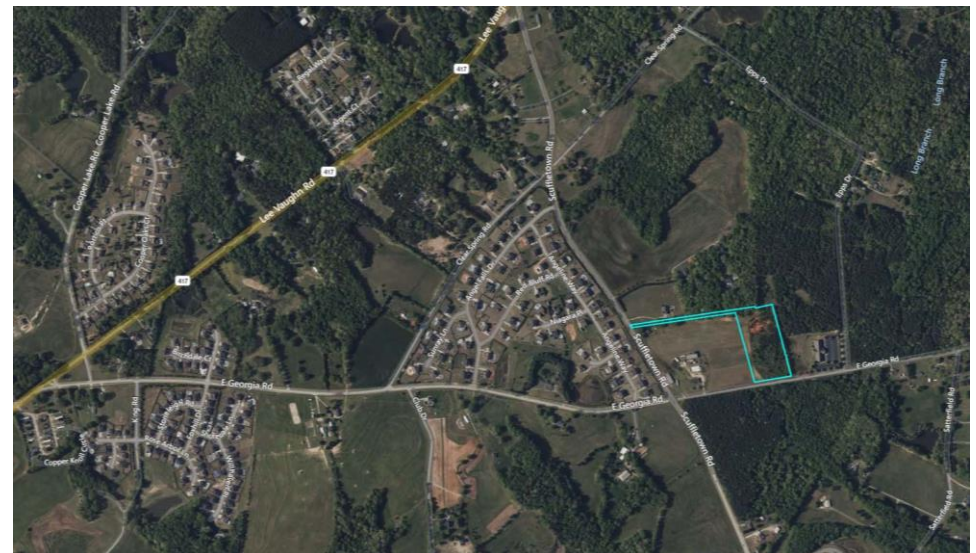
ELLIOTT FAYSSOUX, SIOR
Senior Director
+1 864 370 8190
elliott.fayssoux@cushwake.com

KACIE JACKSON, SIOR
Senior Director, Managing Broker
+1 864 370 8193
Kacie.jackson@cushwake.com

15 South Main Street, Suite 502
Greenville, SC 29601
864 370 8155
cushmanwakefield.com

PROPERTY DETAILS

- **Total Acreage:** ±6.35 Acres
- **Location:** Simpsonville, Greenville County
- **Zoning:** R-S (Residential Suburban District)
- **Proposed Use:** Residential
- **Parcel Number:** 0554020100802
- **Simpsonville:** ±5 Miles to Downtown
- **Fountain Inn:** ±4 Miles to Downtown
- **Five Forks:** ±4.5 Miles to Downtown
- **Mauldin:** ±7.7 Miles to Downtown
- **Asking Price:** Call for Assistance
- **Notes:** ±6.35 acres of land near the intersection of E. Georgia Road and Scuffletown Road. Located in the Scuffletown Rural Conservation District of Greenville County South Carolina



MARKET DETAILS

Greenville-Spartanburg achieved another quarter of economic expansion by adding 7,600 jobs resulting in a 20-basis-point (bp) decline in the unemployment rate quarter-over-quarter (QOQ) to 2.9%, well below the national average of 3.5%. Multiple press releases were made by companies with plans to establish or expand industrial operations in the Upstate. Notable announcements included Milo's Tea Company's land purchase, GE Appliances' decision to expand operations, and TIME Bicycles' plan to establish manufacturing operations.

