

35,554 SF BUILDING FOR SALE
WITH OUTDOOR STORAGE



2840 HIGHWAY 25

WATERTOWN, MINNESOTA

2840 HIGHWAY 25, WATERTOWN, MN

PROPERTY HIGHLIGHTS

Sale Price: \$3,200,00 (\$90.00 PSF)

Building Size: 5,154 SF Office
30,400 SF Warehouse
35,554 SF Total

Site Area: 5.09 acres

Clear Height: 20'

Loading: 3 docks, 3 drive-ins (Drive thru)

Year Built: 1998

Roof: Original (Rubber Membrane)

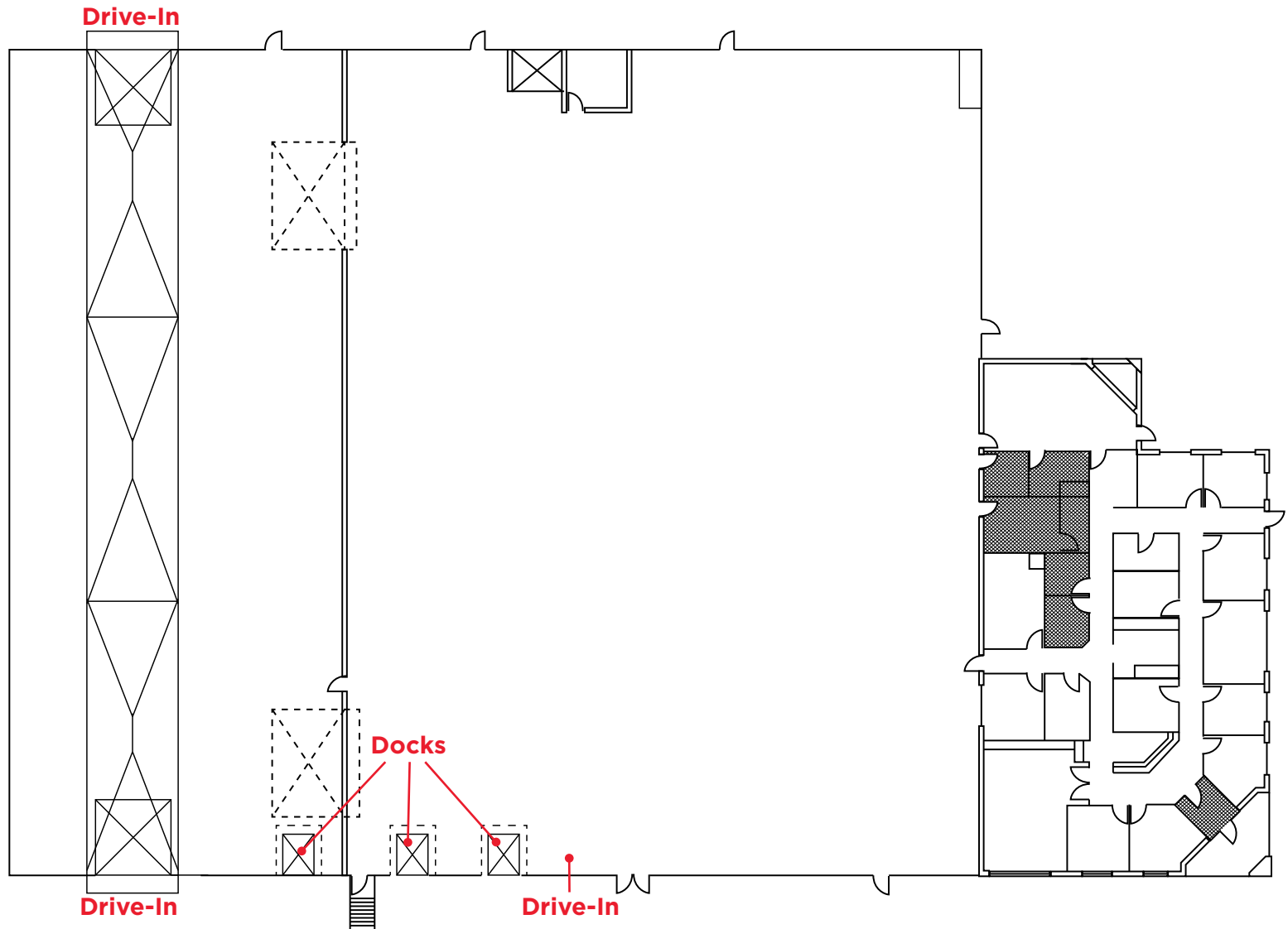
Power: ± 1,200 Amp 3-Phase

Sprinkler: None

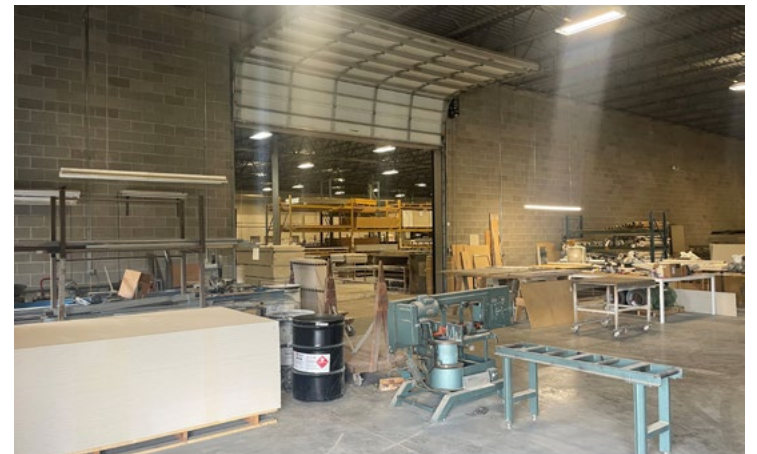
2024 Taxes: \$85,680



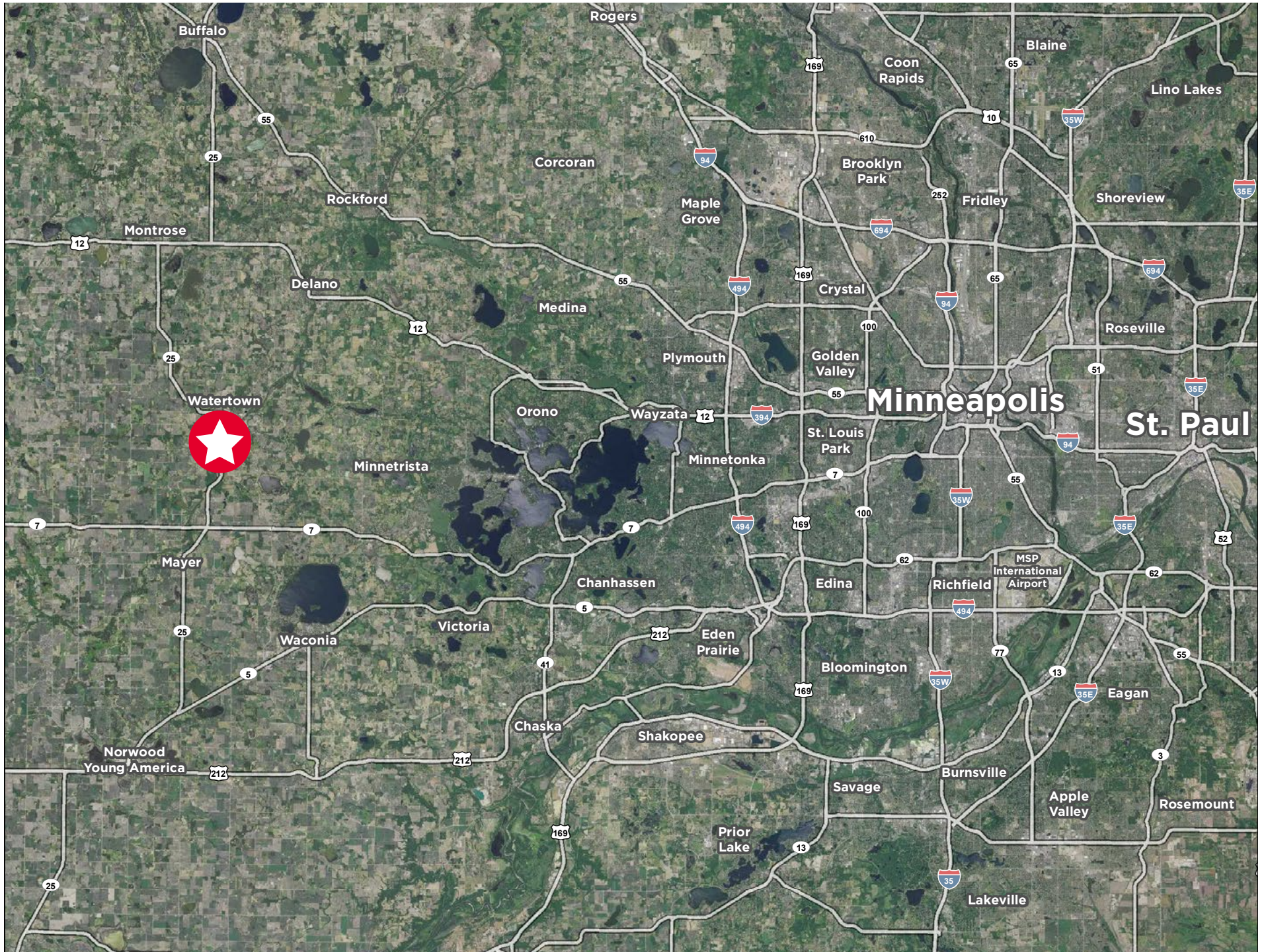
FLOOR PLAN



2840 HIGHWAY 25, WATERTOWN, MN



2840 HIGHWAY 25, WATERTOWN, MN





CONTACT INFORMATION

Brent Masica

Executive Managing Director
+1 952 893 8231
brent.masica@cushwake.com

Jon Rausch

Executive Director
+1 612 685 8288
jon.rausch@cushwake.com

Danny McNamara

Director
+1 952 893 8895
danny.mcnamara@cushwake.com

3500 American Blvd W Suite 200
Minneapolis, MN 55431
cushmanwakefield.com

