

FOR LEASE

1100 Maple Street

Big Rapids, MI 49307

4,938 SF



Industrial Space in Big Rapids

- 4,938 SF available for lease
- 14' clear
- 1 grade level door
- Full HVAC
- Building signage available
- Surfaced customer parking
- Large gravel lot for parking or storage adjacent to building
- Close proximity to US-131

Lease Rate: \$5.00/SF NNN



Jason Webb, SIOR, CCIM

Senior Director

+1 616 327 2218

jason.m.webb@cushwake.com



**CUSHMAN &
WAKEFIELD**

cushmanwakefield.com

FOR LEASE

1100 Maple Street

Big Rapids, Michigan 49307

4,938 SF

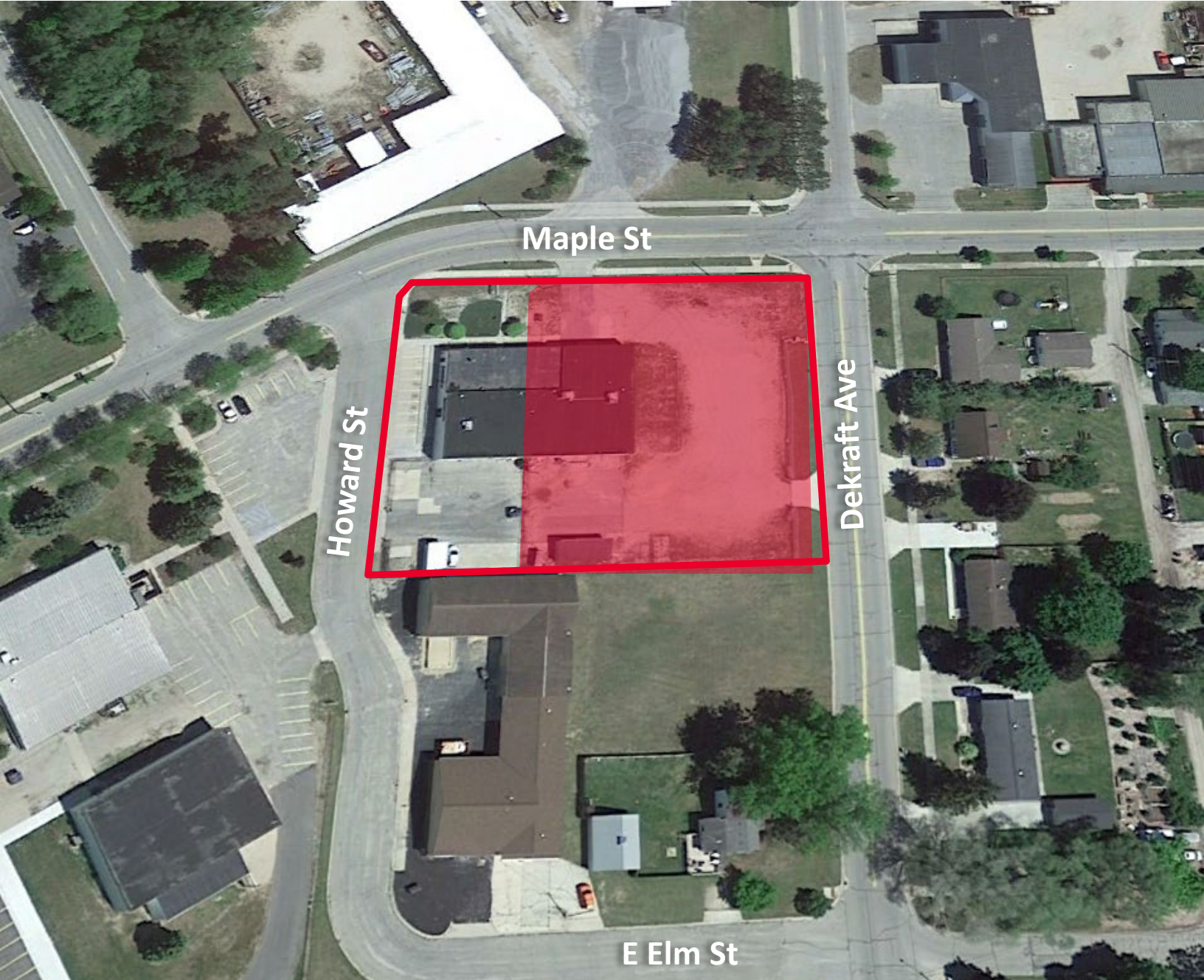


FOR LEASE

1100 Maple Street

Big Rapids, Michigan 49307

4,938 SF



FOR LEASE

1100 Maple Street

Big Rapids, Michigan 49307

4,938 SF



GENERAL INFORMATION

Address	1100 Maple Street Big Rapids, MI 49307
Total Building Area	10,370 SF
Primary Use	Office
Year Built	1968
Stories	1

PRICING

Rental Rate	\$5.00/SF
Monthly Rent	\$2,057.50
Lease Type	NNN

LISTING AGENT

Jason Webb, SIOR, CCIM

Senior Director

C +1 616 238 1044

O +1 616 327 2218

jason.m.webb@cushwake.com

DEMOGRAPHICS

	Population	Average Household Income	Daytime Population
2 Mile	11,730	\$51,695	7,784
5 Miles	18,236	\$59,219	10,290
10 Miles	27,268	\$61,496	11,385

SITE DETAILS

Total Land Area	1.162 acres
Zoning	I - Industrial
Parcel ID	17-11-454-001
Parking	Surfaced Spaces and Gravel Lot
Major Crossroads	Maple Street and Dekraft Avenue
Neighboring Businesses	Spectrum Store Stanley Steamer Elite Signs Paz Pub & Grill Sawmill Saloon Isabella Bank M&M Collision



**CUSHMAN &
WAKEFIELD**

cushmanwakefield.com