

444 Regency Parkway  
Omaha, NE 68144



## Property Information

<b>Lease Rate</b>	\$17.50 PSF NNN
<b>NNN Expenses</b>	\$9.15 PSF
<b>Available SF</b>	3,952 SF
<b>Max Contiguous</b>	3,952 SF
<b>Total Building SF</b>	47,191 SF
<b>Zoning</b>	CC
<b>Floors</b>	3
<b>Year Built/Renovated</b>	1986/2016

## Contact Information

**MARTIN PATZNER, CCIM, SIOR, CPM, RPA**  
Vice President, Office Specialist  
+1 402 548 4033  
martin.patzner@lundco.com

## Property Highlights

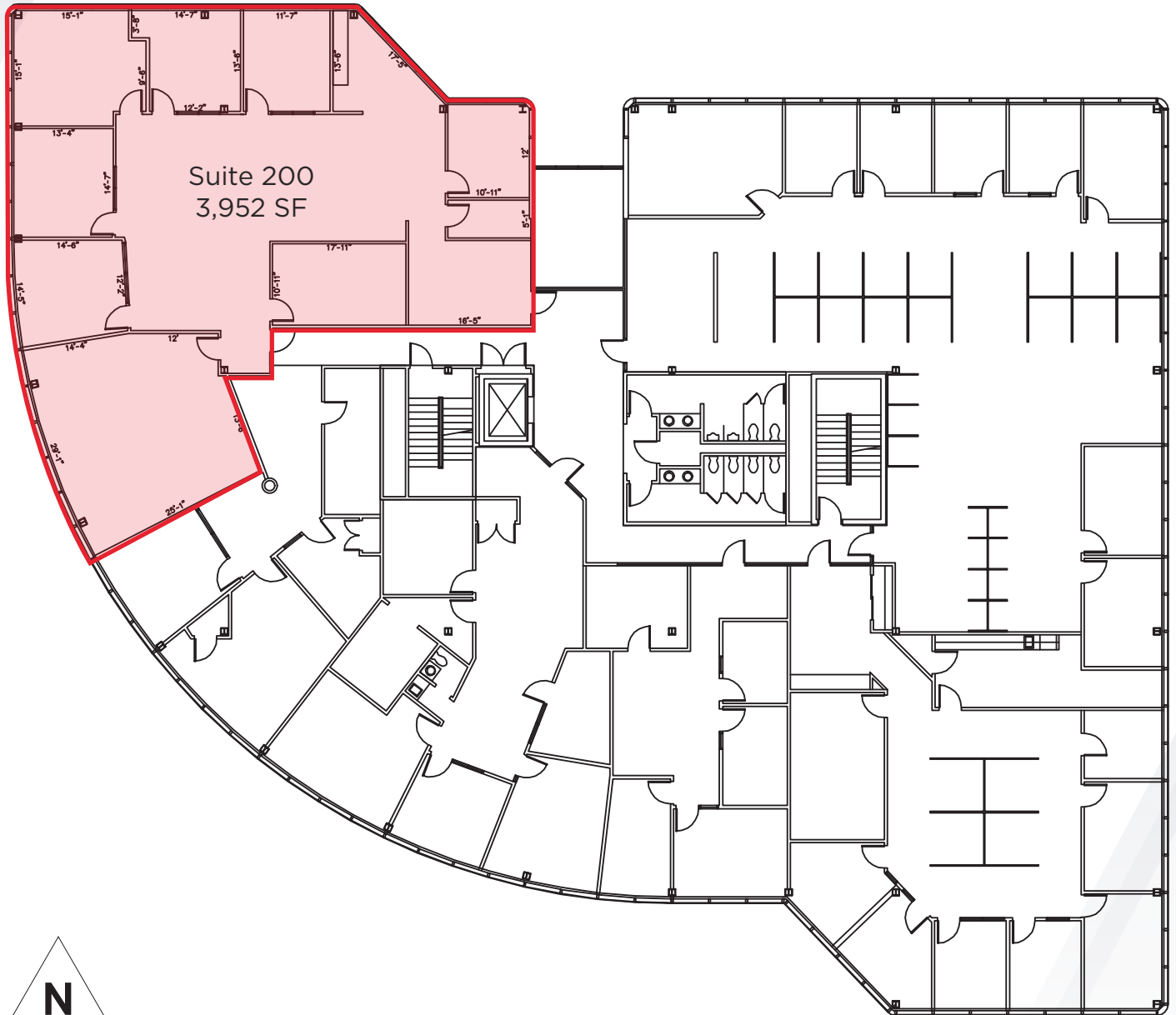
- Premier central office location
- Small to medium sized suites
- Quite Lake Views
- Quick access to Pacific Street, Dodge Road & Interstate 680

450 Regency Parkway, Suite 200  
Omaha, NE 68114  
+1 402 393 8811  
**lundco.com**

*Independently Owned and Operated / A Member of the Cushman & Wakefield Alliance*

Cushman & Wakefield Copyright 2024. No warranty or representation, express or implied, is made to the accuracy or completeness of the information contained herein, and same is submitted subject to errors, omissions, change of price, rental or other conditions, withdrawal without notice, and to any special listing conditions imposed by the property owner(s). As applicable, we make no representation as to the condition of the property (or properties) in question.

Floor Plan - Suite 200



Contact Information

MARTIN PATZNER, CCIM, SIOR, CPM, RPA  
Vice President, Office Specialist  
+1 402 548 4033  
martin.patzner@lundco.com

450 Regency Parkway, Suite 200  
Omaha, NE 68114  
+1 402 393 8811  
lundco.com

Independently Owned and Operated / A Member of the Cushman & Wakefield Alliance

Cushman & Wakefield Copyright 2024. No warranty or representation, express or implied, is made to the accuracy or completeness of the information contained herein, and same is submitted subject to errors, omissions, change of price, rental or other conditions, withdrawal without notice, and to any special listing conditions imposed by the property owner(s). As applicable, we make no representation as to the condition of the property (or properties) in question.



444 Regency Parkway  
Omaha, NE 68144



## Trade Map



## Contact Information

MARTIN PATZNER, CCIM, SIOR, CPM, RPA  
Vice President, Office Specialist  
+1 402 548 4033  
martin.patzner@lundco.com

450 Regency Parkway, Suite 200  
Omaha, NE 68114  
+1 402 393 8811  
lundco.com

*Independently Owned and Operated / A Member of the Cushman & Wakefield Alliance*

Cushman & Wakefield Copyright 2024. No warranty or representation, express or implied, is made to the accuracy or completeness of the information contained herein, and same is submitted subject to errors, omissions, change of price, rental or other conditions, withdrawal without notice, and to any special listing conditions imposed by the property owner(s). As applicable, we make no representation as to the condition of the property (or properties) in question.