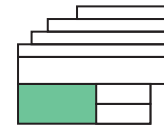
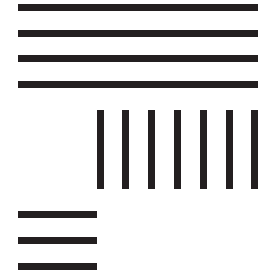


CEILING HEIGHT: 21' 3"

FLOOR LOAD: 125 PSF



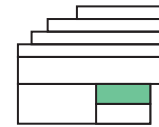
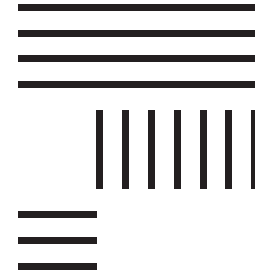
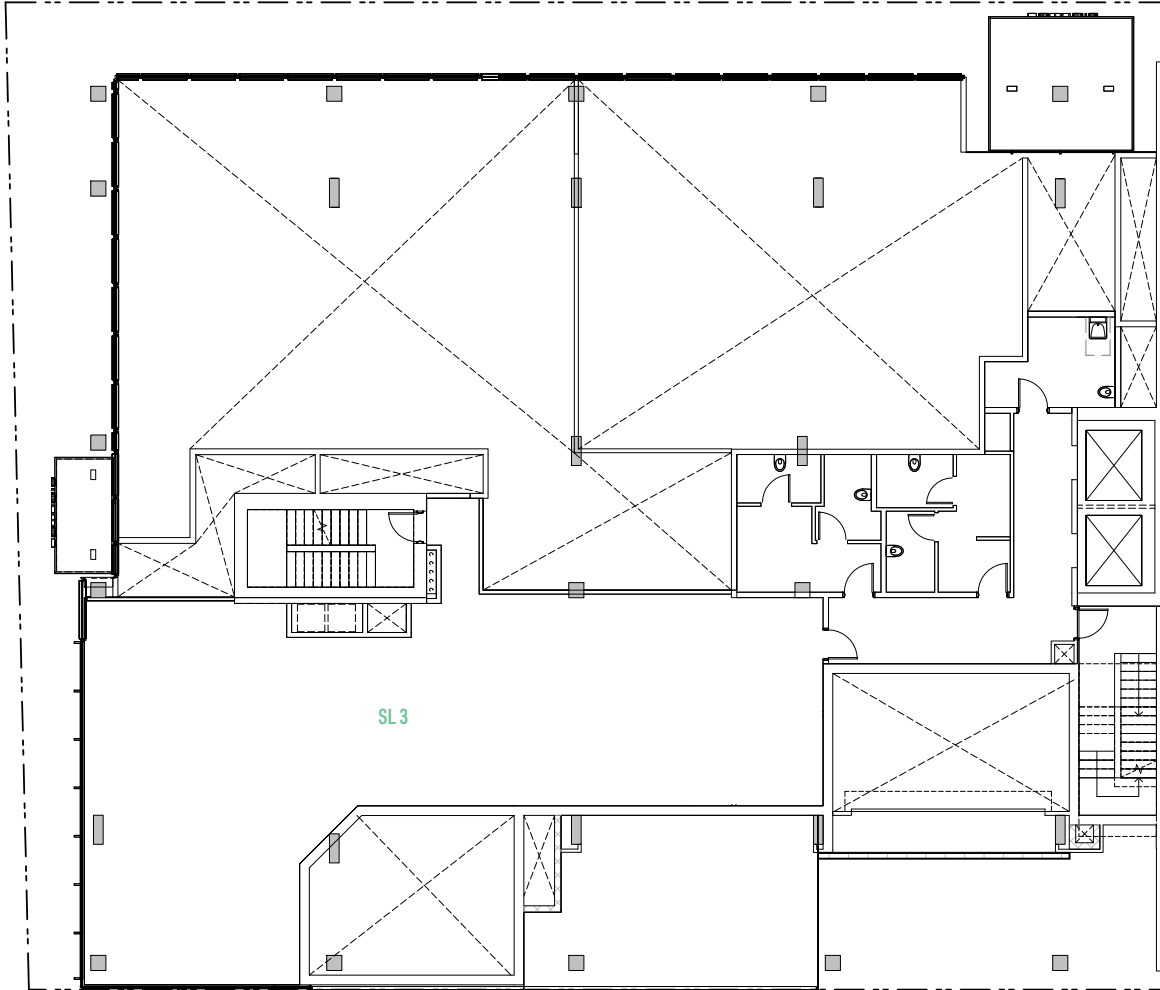
LEVEL 1

LIGHT INDUSTRIAL | TOTAL 3,691 SF

SL 1	2,297 SF
SL 2	1,394 SF

UNITS CAN BE COMBINED





LEVEL 1 MEZZ

LIGHT INDUSTRIAL | TOTAL 2,212 SF

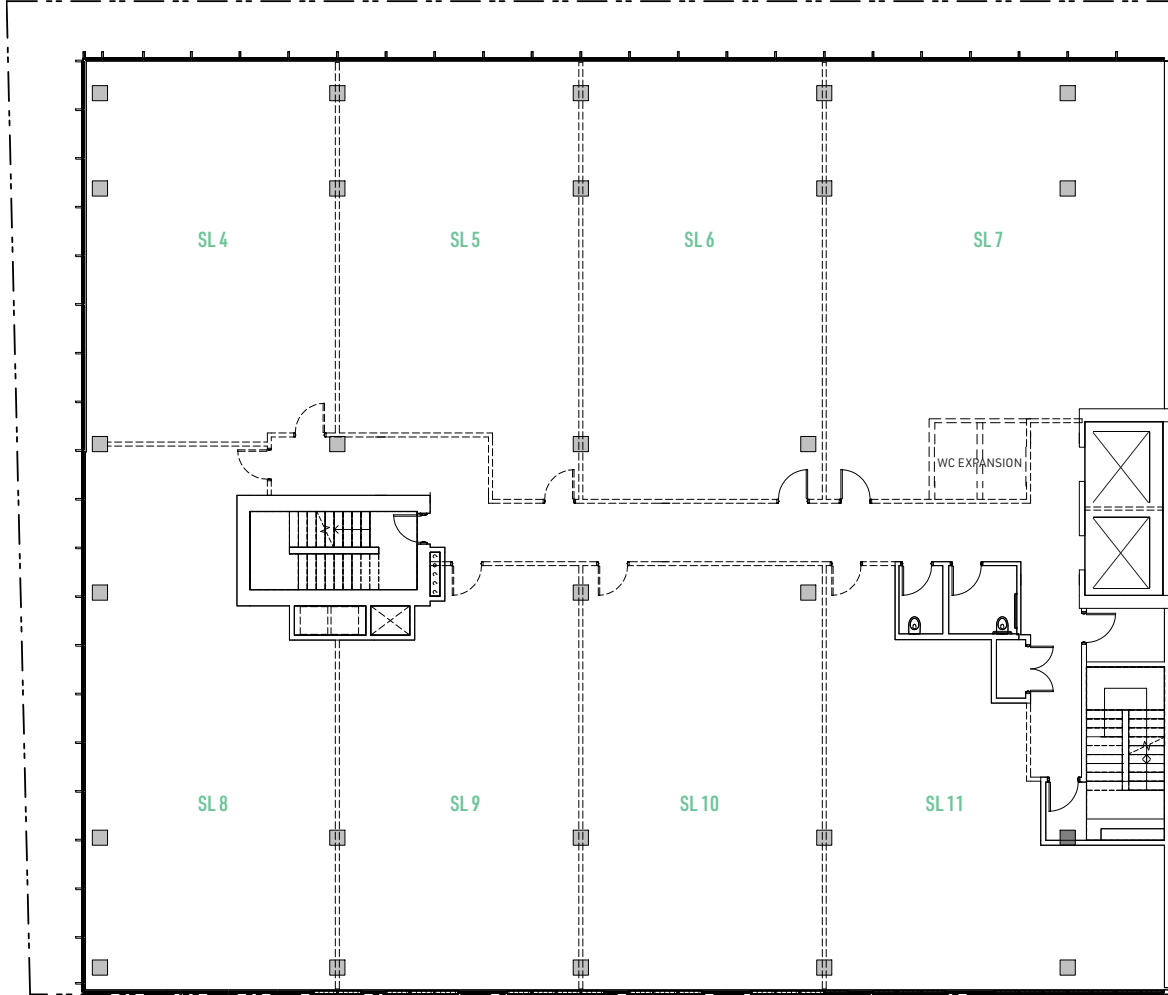
SL 3

2,212 SF



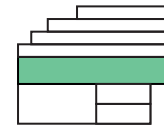
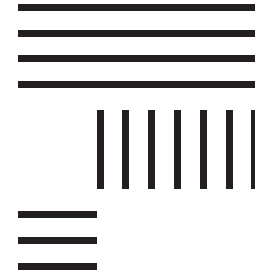
CEILING HEIGHT: 9' 3"

FLOOR LOAD: 125 PSF



CEILING HEIGHT: 14' 3"

FLOOR LOAD: 125 PSF

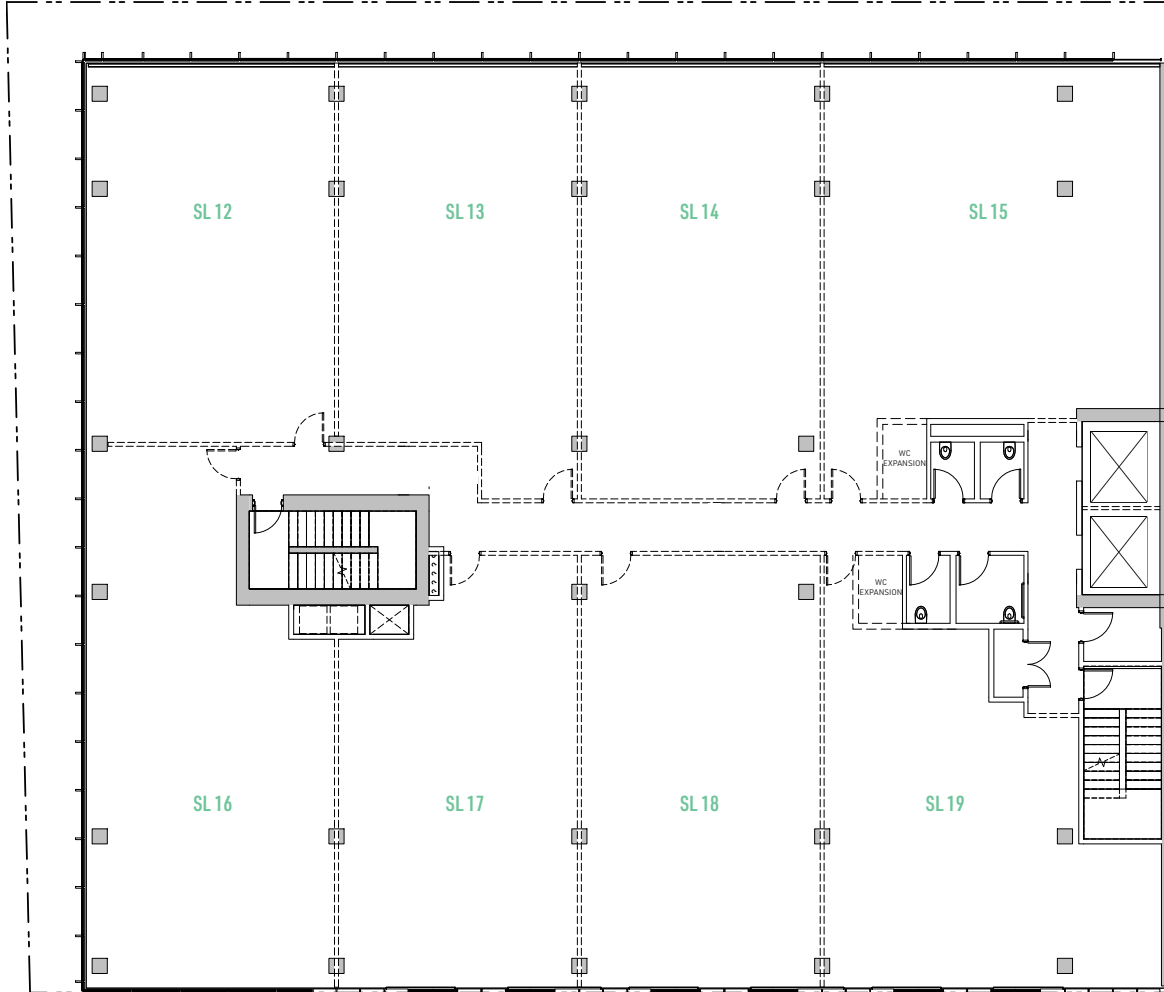


LEVEL 2

LIGHT INDUSTRIAL | TOTAL 9,223 SF

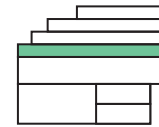
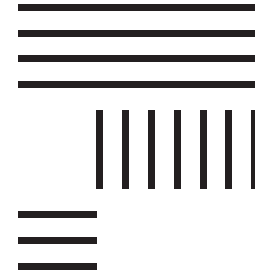
SL 4	1,030 SF
SL 5	1,036 SF
SL 6	1,142 SF
SL 7	1,428 SF
SL 8	1,319 SF
SL 9	1,035 SF
SL 10	1,106 SF
SL 11	1,043 SF

UNITS CAN BE COMBINED



CEILING HEIGHT: 10' 9"

FLOOR LOAD: 100 PSF

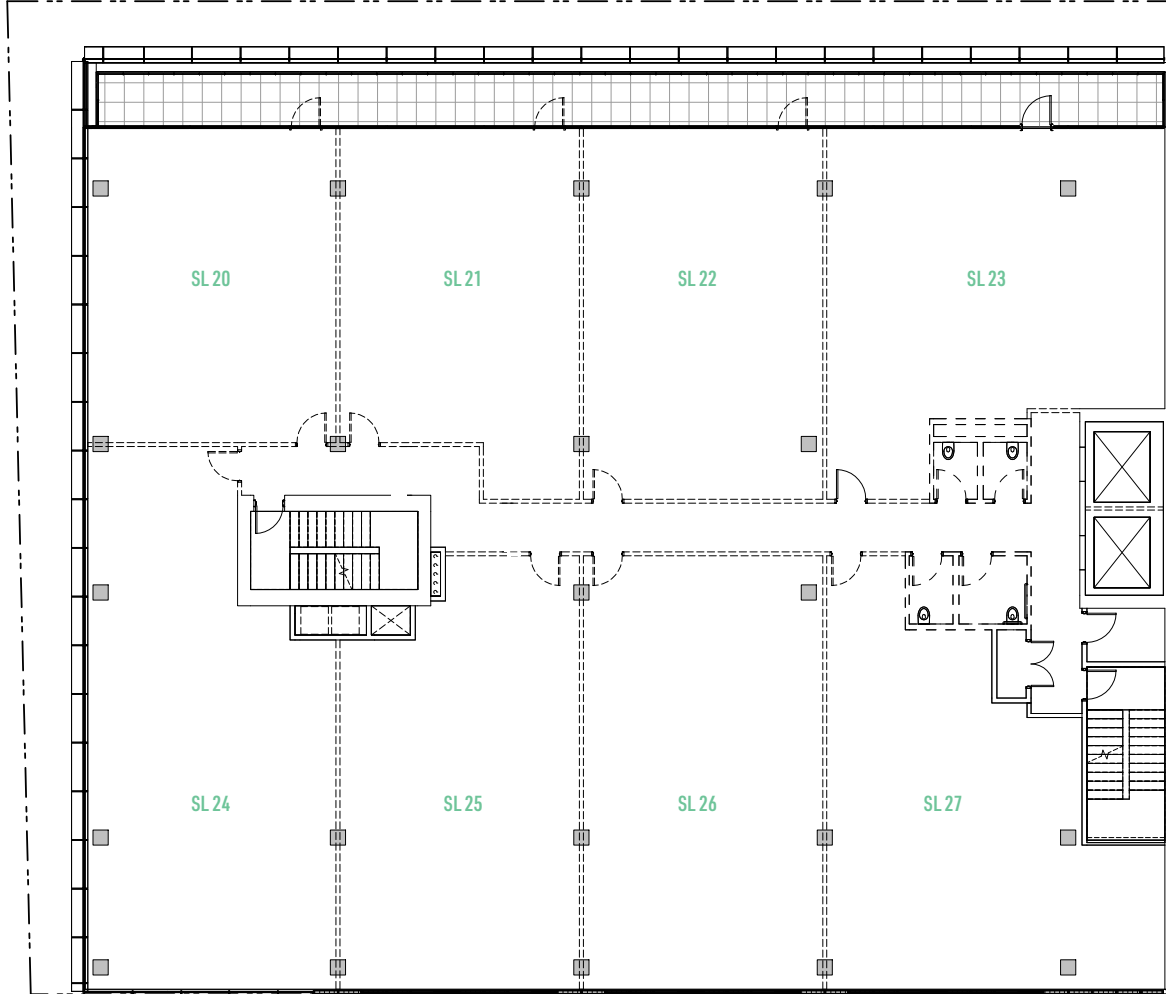


LEVEL 3

OFFICE | TOTAL 9,276 SF

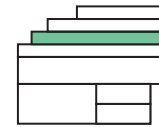
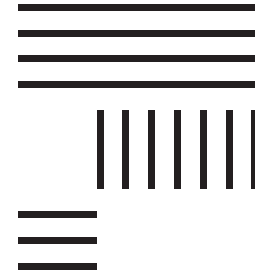
SL 12	1,039 SF
SL 13	1,057 SF
SL 14	1,142 SF
SL 15	1,386 SF
SL 16	1,299 SF
SL 17	1,049 SF
SL 18	1,131 SF
SL 19	1,093 SF

UNITS CAN BE COMBINED



CEILING HEIGHT: 11' 5"

FLOOR LOAD: 100 PSF

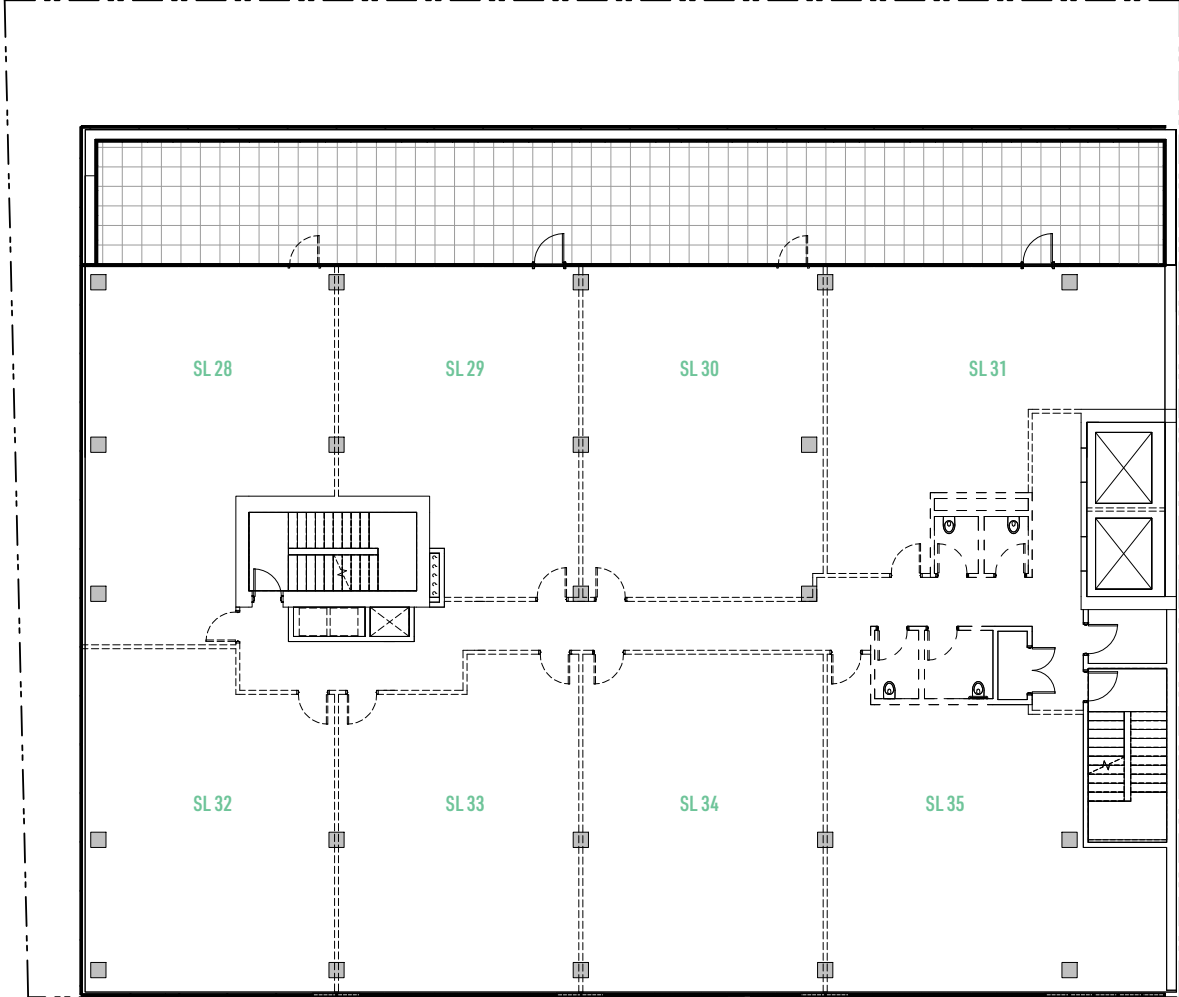


LEVEL 4

OFFICE | TOTAL 9,228 SF

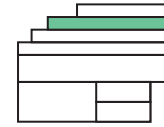
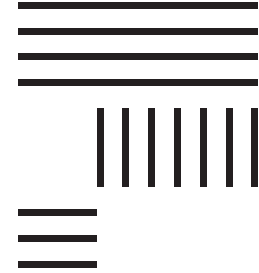
SL 20	855 SF
SL 21	882 SF
SL 22	966 SF
SL 23	1,169 SF
SL 24	1,299 SF
SL 25	1,049 SF
SL 26	1,131 SF
SL 27	1,132 SF

UNITS CAN BE COMBINED



CEILING HEIGHT: 11' 2"

FLOOR LOAD: 100 PSF

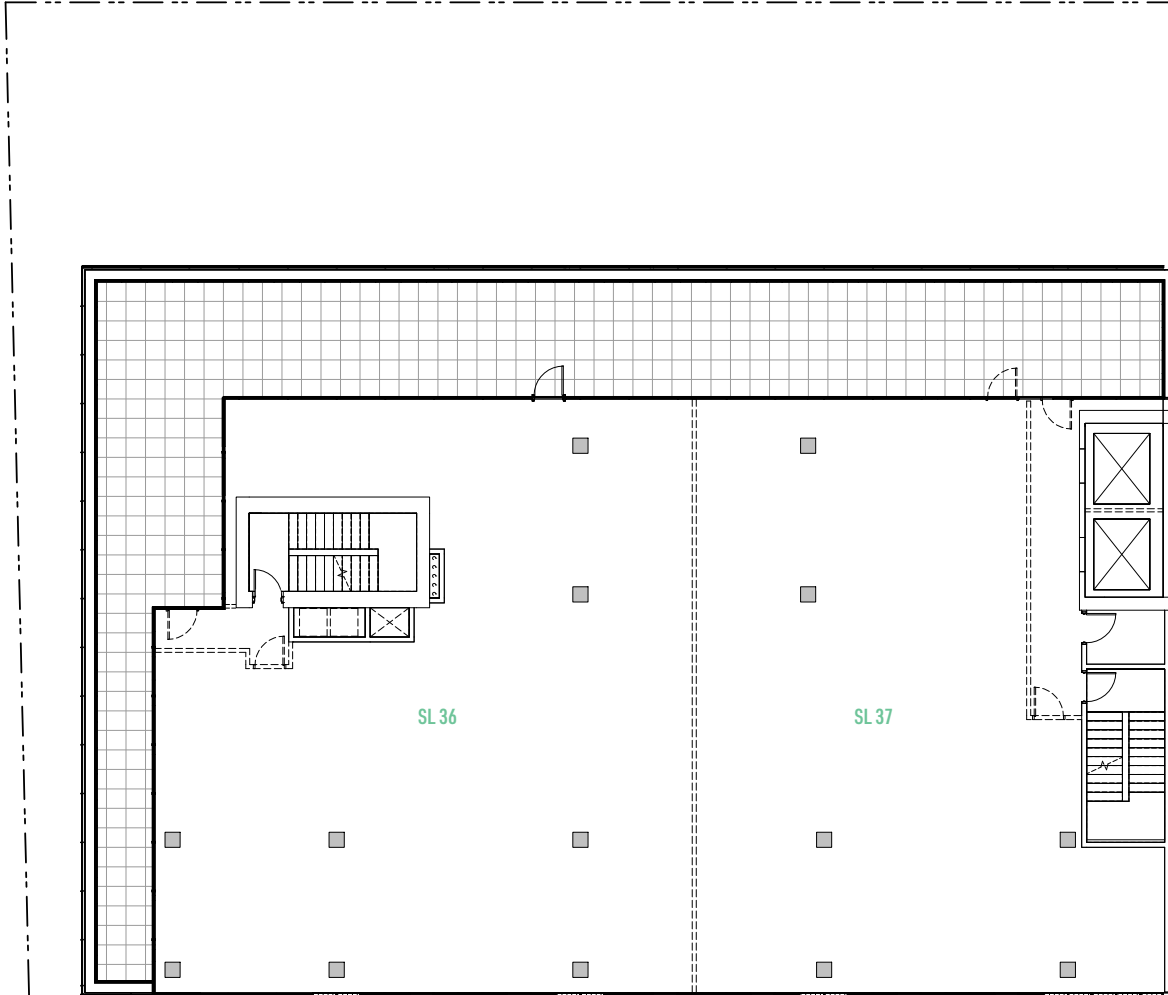


LEVEL 5

OFFICE | TOTAL 7,699 SF

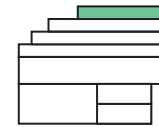
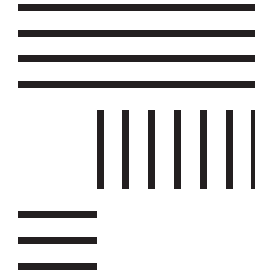
SL 28	880 SF
SL 29	763 SF
SL 30	859 SF
SL 31	813 SF
SL 32	889 SF
SL 33	830 SF
SL 34	883 SF
SL 35	964 SF

UNITS CAN BE COMBINED



CEILING HEIGHT: 10' 9"

FLOOR LOAD: 100 PSF



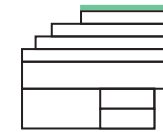
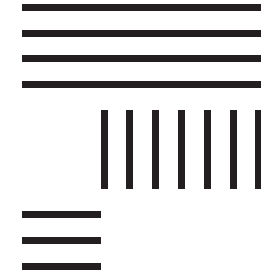
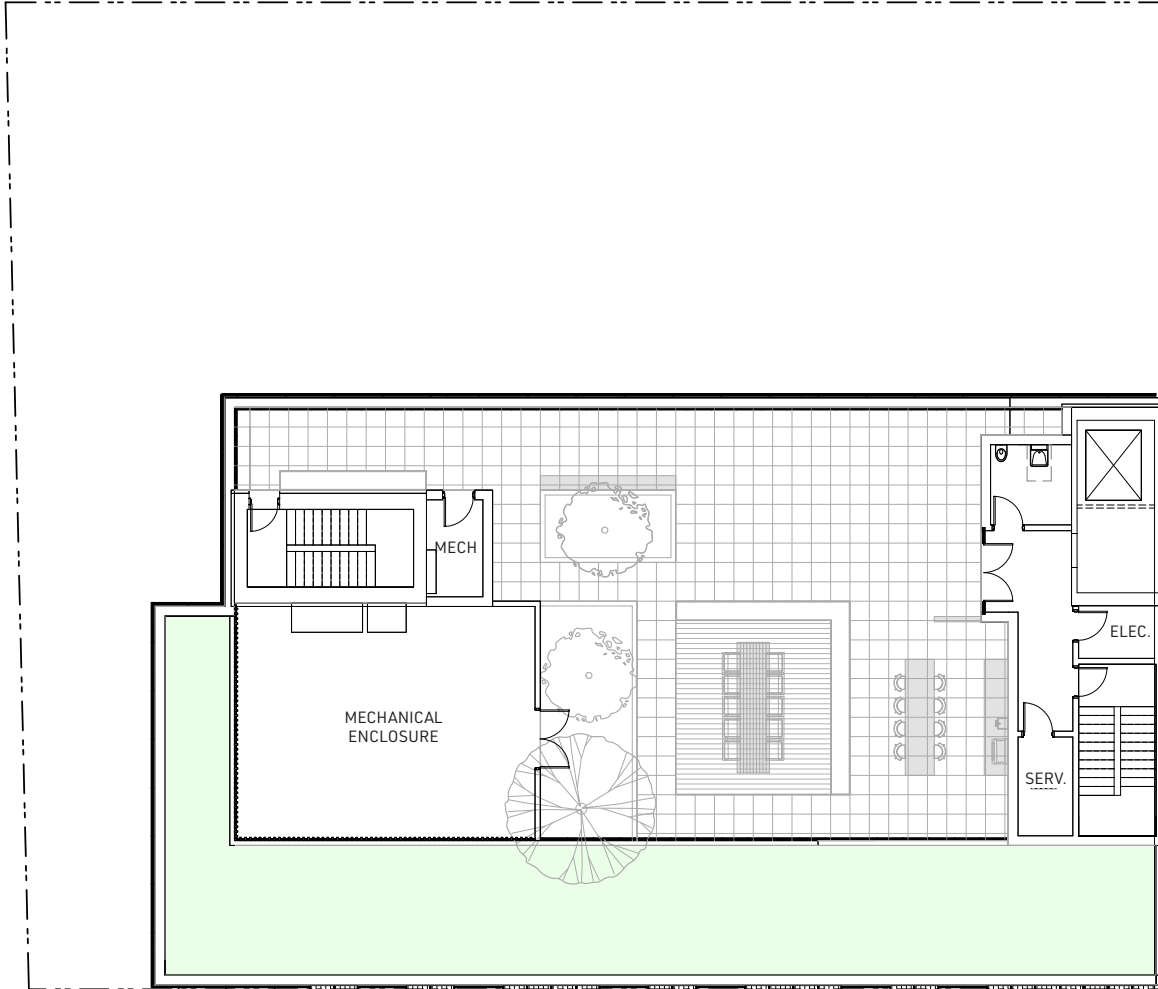
LEVEL 6

OFFICE | TOTAL 5,577 SF

SL 36	2,913 SF
SL 37	2,407 SF

UNITS CAN BE COMBINED





ROOFTOP PATIO

