

SUBLEASE | 23,316 RSF

111 ACADEMY DR

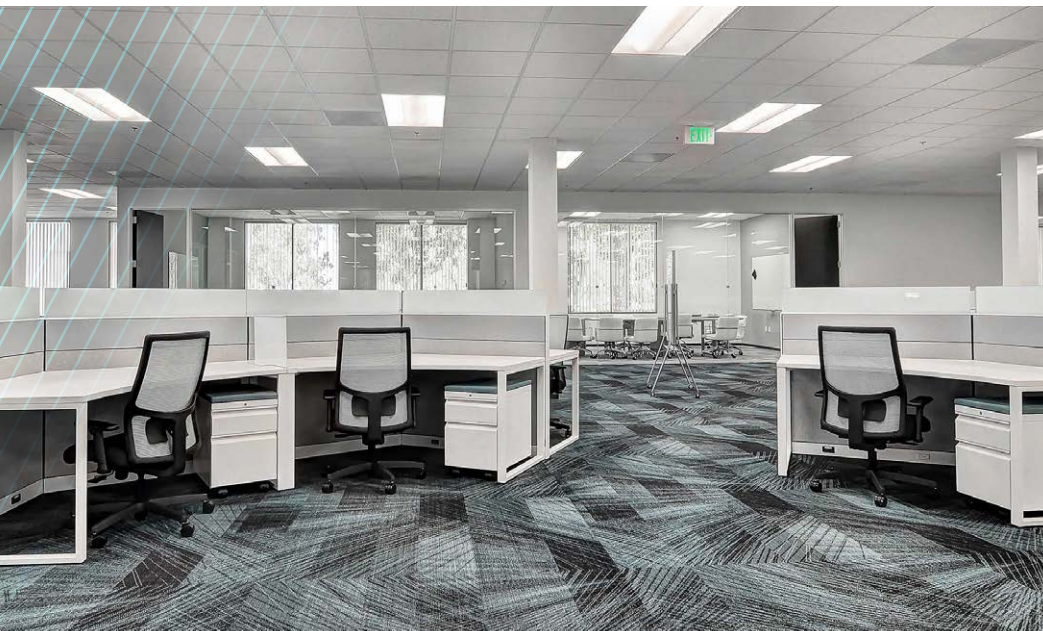
IRVINE, CALIFORNIA 92617



**CUSHMAN &
WAKEFIELD**

SUBLEASE | 23,316 RSF

111 ACADEMY DRIVE IRVINE, CALIFORNIA 92617



CUSHMAN & WAKEFIELD 18111 VON KARMAN AVENUE, SUITE 1000, IRVINE, CALIFORNIA 92612 +1 949 474 4004 WWW.CUSHMANWAKEFIELD.COM

No warranty or representation, expressed or implied, is made as to the accuracy of the information contained herein, and same is submitted subject to errors, omissions, change of price, rental or other conditions, withdrawal without notice, and to any specific listing conditions imposed by our principals.

SUBLEASE | 23,316 RSF

111 ACADEMY DRIVE IRVINE, CALIFORNIA 92617



FEATURES

- ▶ Ground floor office/R&D space and 2nd floor office
- ▶ 23,316 RSF available, divisible
- ▶ Furniture and phone systems available
- ▶ Lab space includes air compressor hook-ups and standard furnaces
- ▶ Located in UCI Research Park, a 21st-century hub revitalized to support visionary businesses, start-ups, and global corporations
- ▶ Convenient location providing easy access to 73 Toll Road, CA-55 and I-405 Freeways
- ▶ Numerous amenities on-site and nearby
- ▶ Call to show

CUSHMAN & WAKEFIELD 18111 VON KARMAN AVENUE, SUITE 1000, IRVINE, CALIFORNIA 92612 +1 949 474 4004 WWW.CUSHMANWAKEFIELD.COM

No warranty or representation, expressed or implied, is made as to the accuracy of the information contained herein, and same is submitted subject to errors, omissions, change of price, rental or other conditions, withdrawal without notice, and to any specific listing conditions imposed by our principals.

SUBLEASE | 23,316 RSF

111 ACADEMY

GROUND FLOOR



► Suite 150

SUITE NUMBER

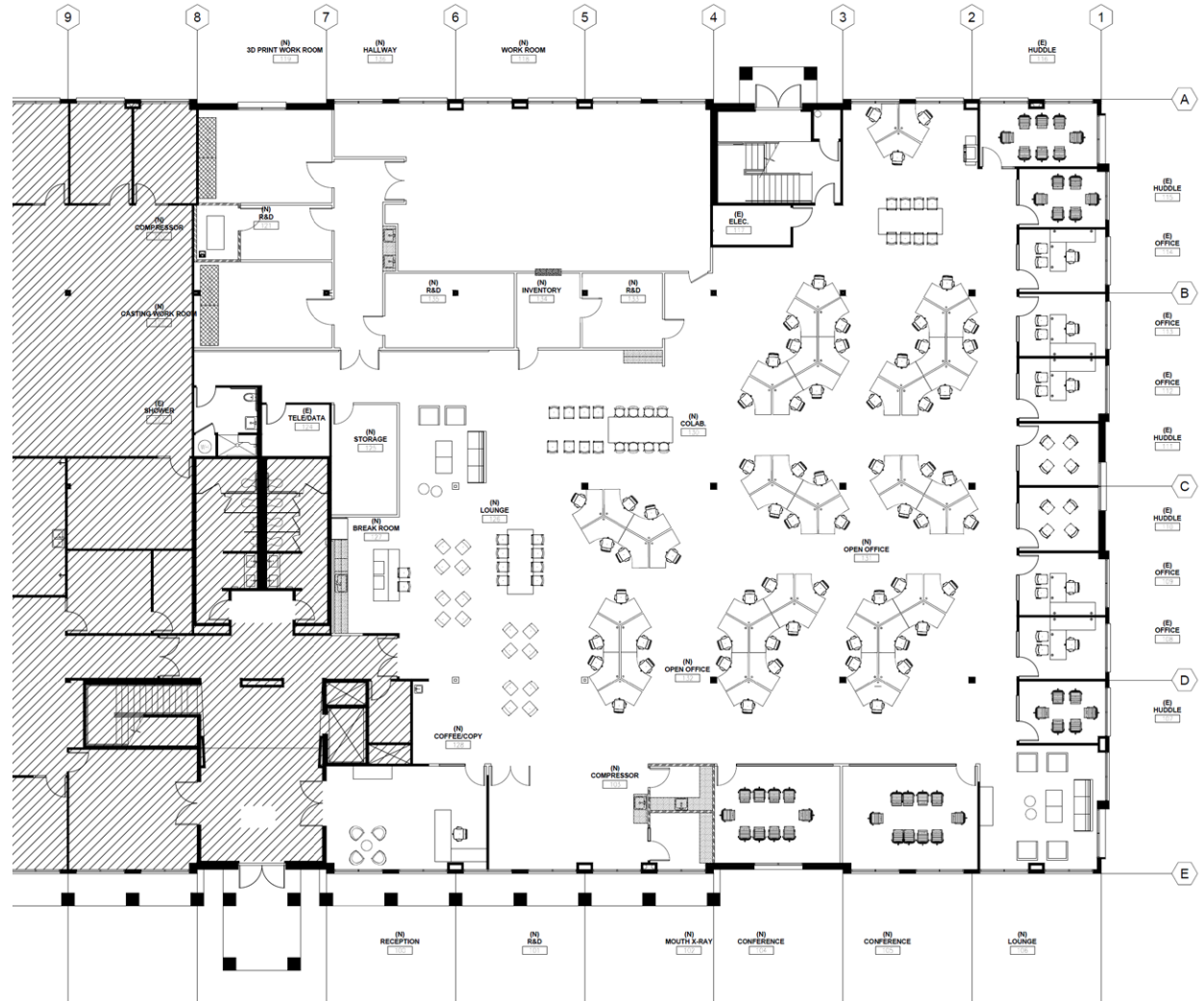
► 16,541 RSF

(3,000 RSF OF R&D/LAB)

AVAILABLE SF

► 9/30/2026

AVAILABLE THROUGH



FOR MORE INFORMATION,
PLEASE CONTACT:

Justin Cassel Lic. #01934421
Director
+1 949 955 7641
justin.cassel@cushwake.com

CUSHMAN & WAKEFIELD | 18111 VON KARMAN AVENUE # 1000, IRVINE, CA 92612 | WWW.CUSHMANWAKEFIELD.COM

No warranty or representation, expressed or implied, is made as to the accuracy of the information contained herein, and same is submitted subject to errors, omissions, change of price, rental or other conditions, withdrawal without notice, and to any specific listing conditions imposed by our principals.

SUBLEASE | 23,316 RSF

111 ACADEMY

SECOND FLOOR



▶ **Suite 200**

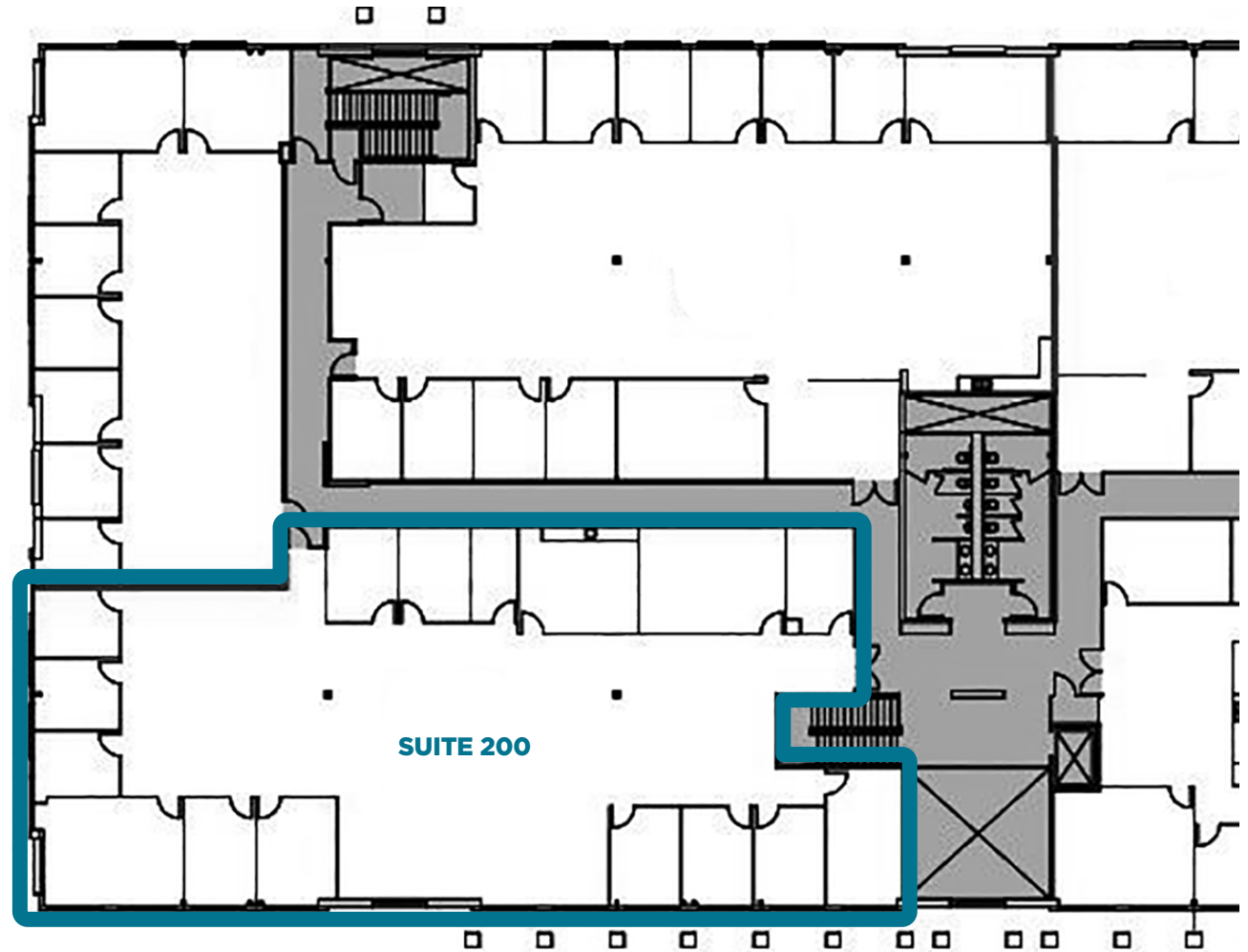
SUITE NUMBER

▶ **6,541 RSF**

AVAILABLE SF

▶ **9/30/2026**

AVAILABLE THROUGH



FOR MORE INFORMATION,
PLEASE CONTACT:

Justin Cassel Lic. #01934421
Director
+1 949 955 7641
justin.cassel@cushwake.com

CUSHMAN & WAKEFIELD | 18111 VON KARMAN AVENUE # 1000, IRVINE, CA 92612 | WWW.CUSHMANWAKEFIELD.COM

No warranty or representation, expressed or implied, is made as to the accuracy of the information contained herein, and same is submitted subject to errors, omissions, change of price, rental or other conditions, withdrawal without notice, and to any specific listing conditions imposed by our principals.