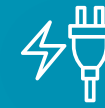


AVAILABLE FOR SUBLEASE

# 14055 LAURELWOOD PLACE CHINO, CALIFORNIA



**HEAVY POWER  
5,000 AMPS**

±52,000 SF Freestanding Industrial Building on 2.00 Acres



For more information, please contact:

Cooper Hughes  
562 652 7486  
cooper.hughes@cushwake.com  
CA Lic. 02216870

Ryan Velasquez  
+1 909 800 0576  
ryan.velasquez@cushwake.com  
Lic. 01347459

Milo Lipson  
909 942 4648  
milo.lipson@cushwake.com  
CA Lic. 01253614



**CUSHMAN &  
WAKEFIELD**

# // PROPERTY FEATURES



SUBLEASE THROUGH 10/31/28



±6,400 SF OFFICE SPACE



20' MINIMUM CLEAR HEIGHT



2 DH / 4 GL DOORS



PRIVATE SECURED YARDS



NEAR THE 60 & 71 FREEWAYS



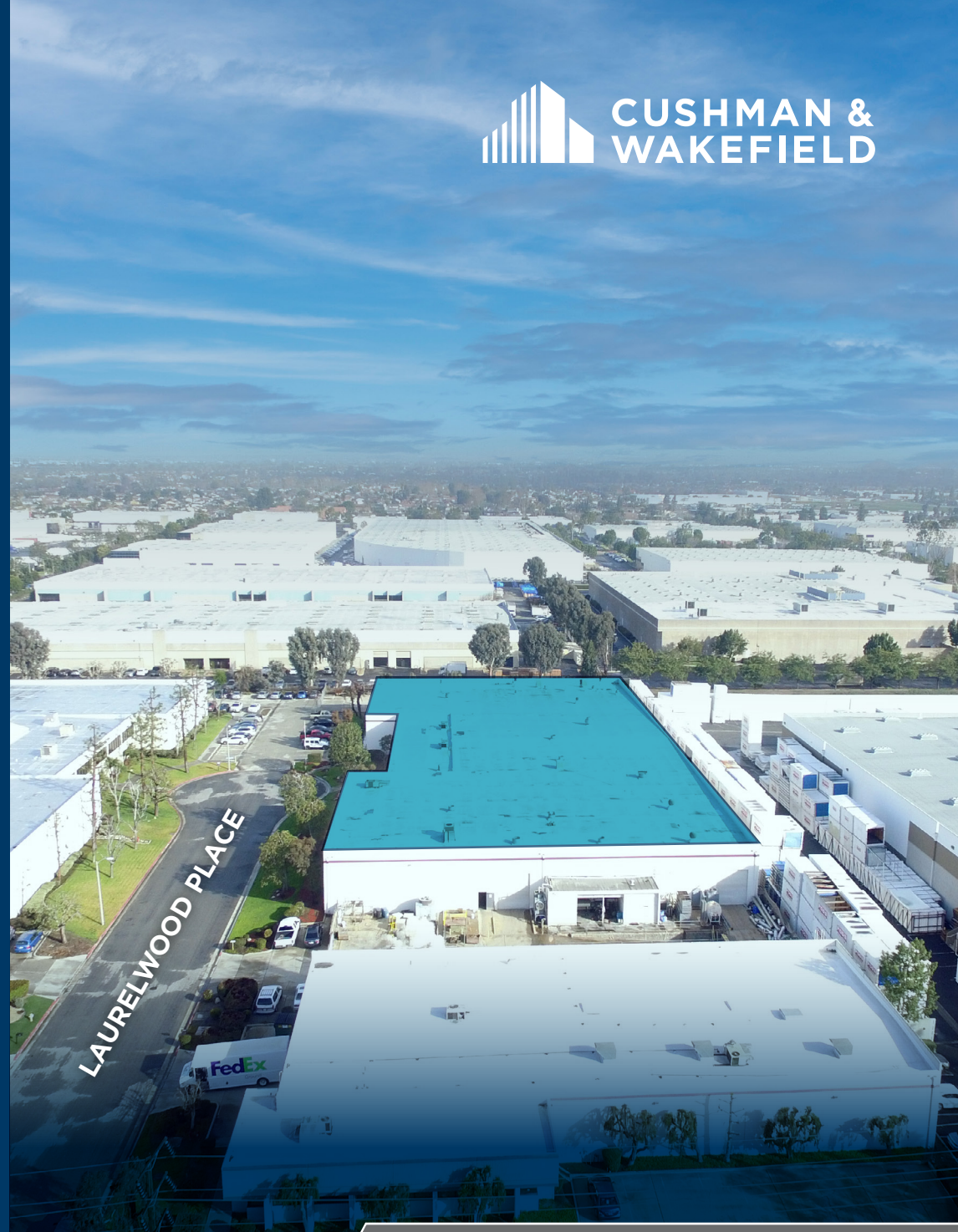
.19 GPM/1,500 SF SPRINKLERS



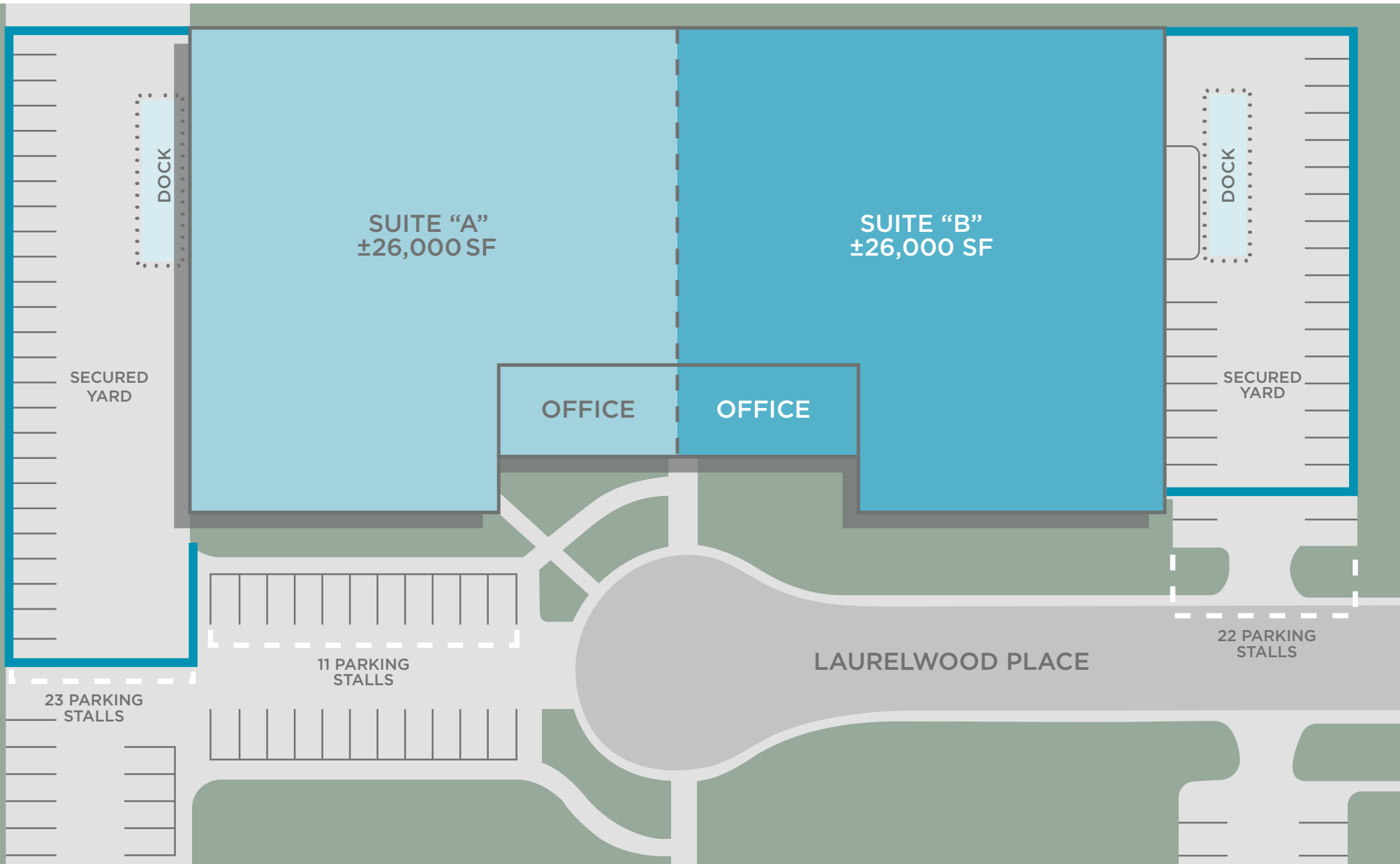
±5,000 AMP POWER PANELS  
(277/480 VOLT) DIVISIBLE - PLEASE VERIFY



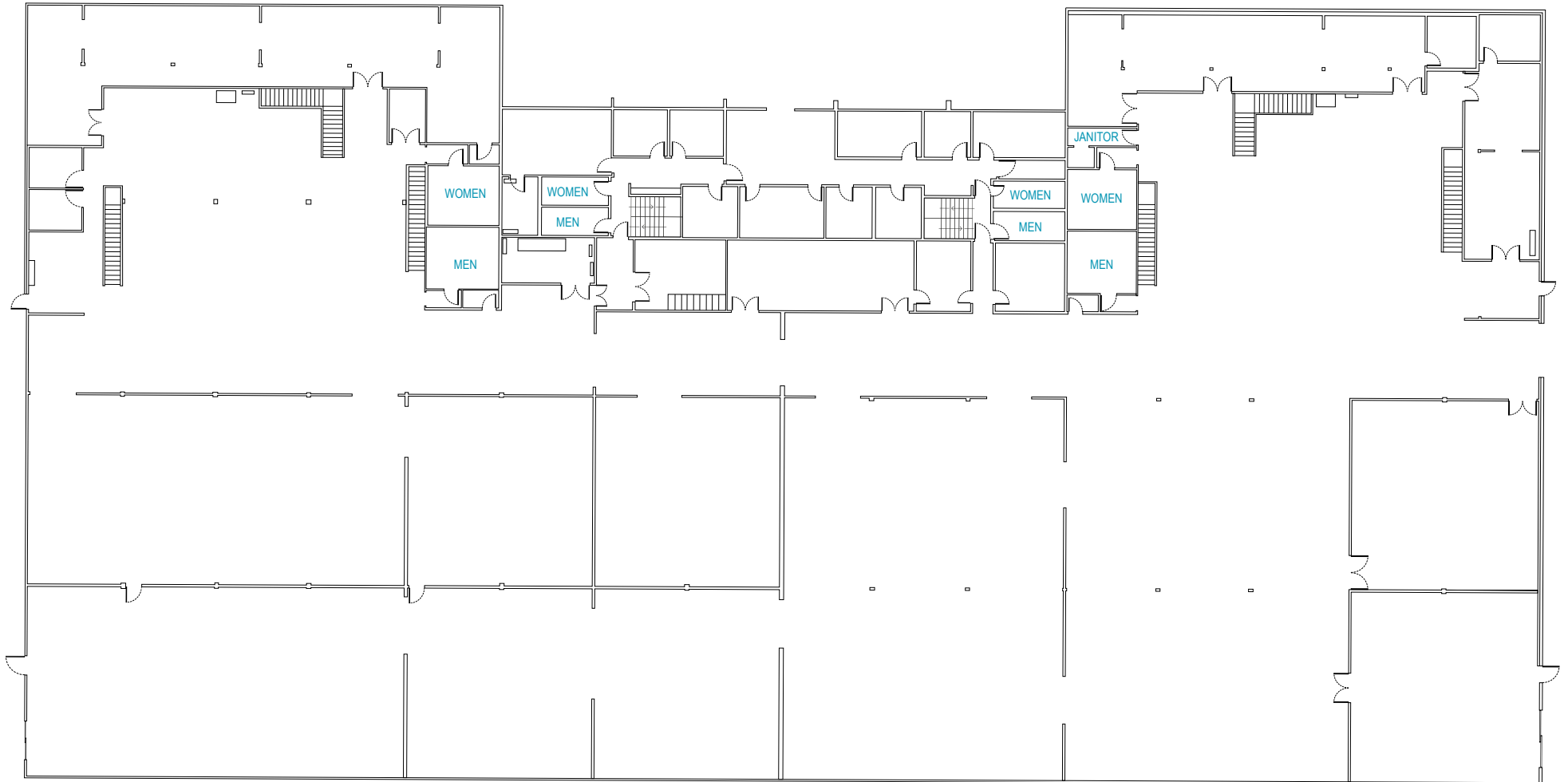
APNs: 1022-221-05, 04, 11



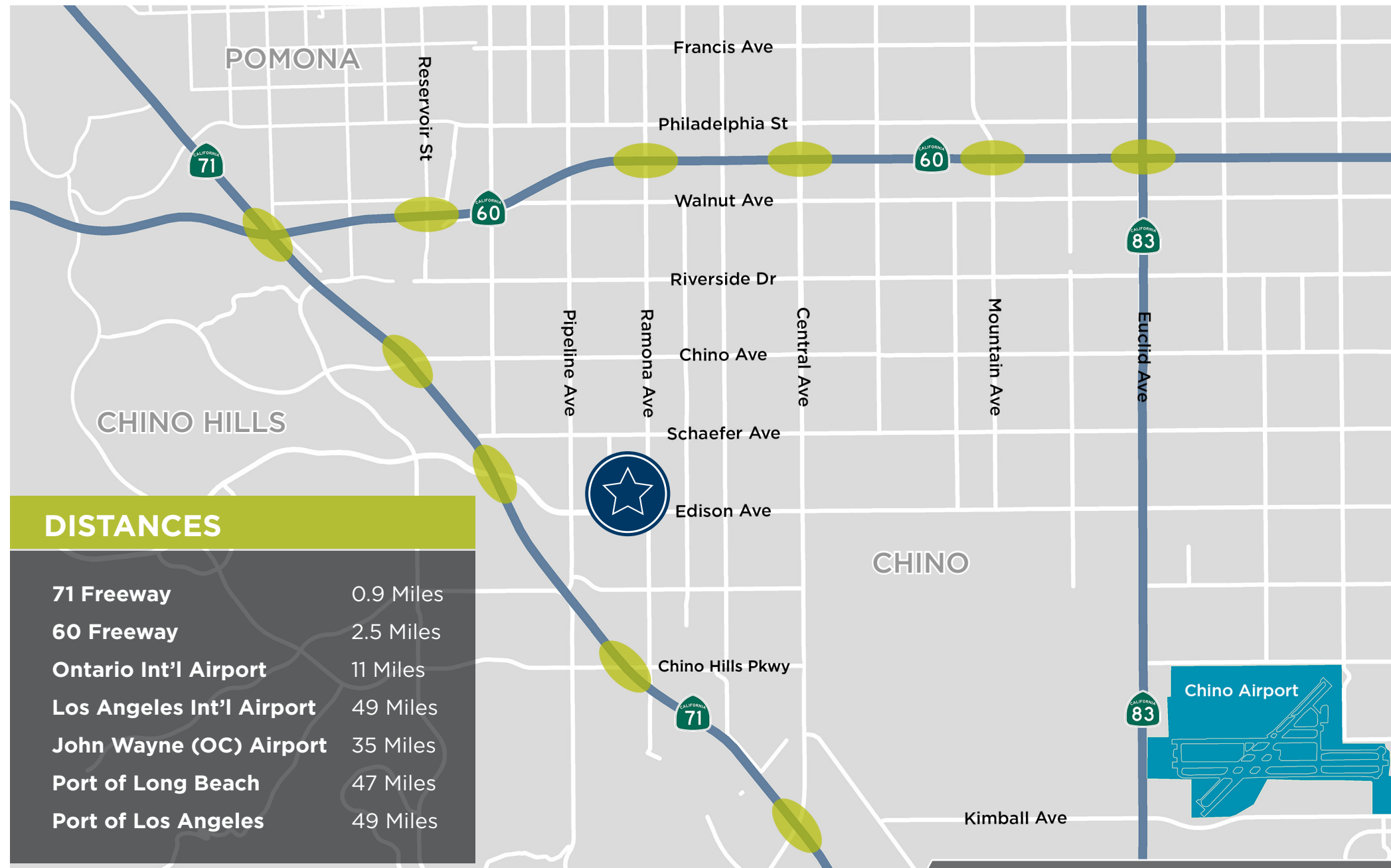
# // SITE PLAN



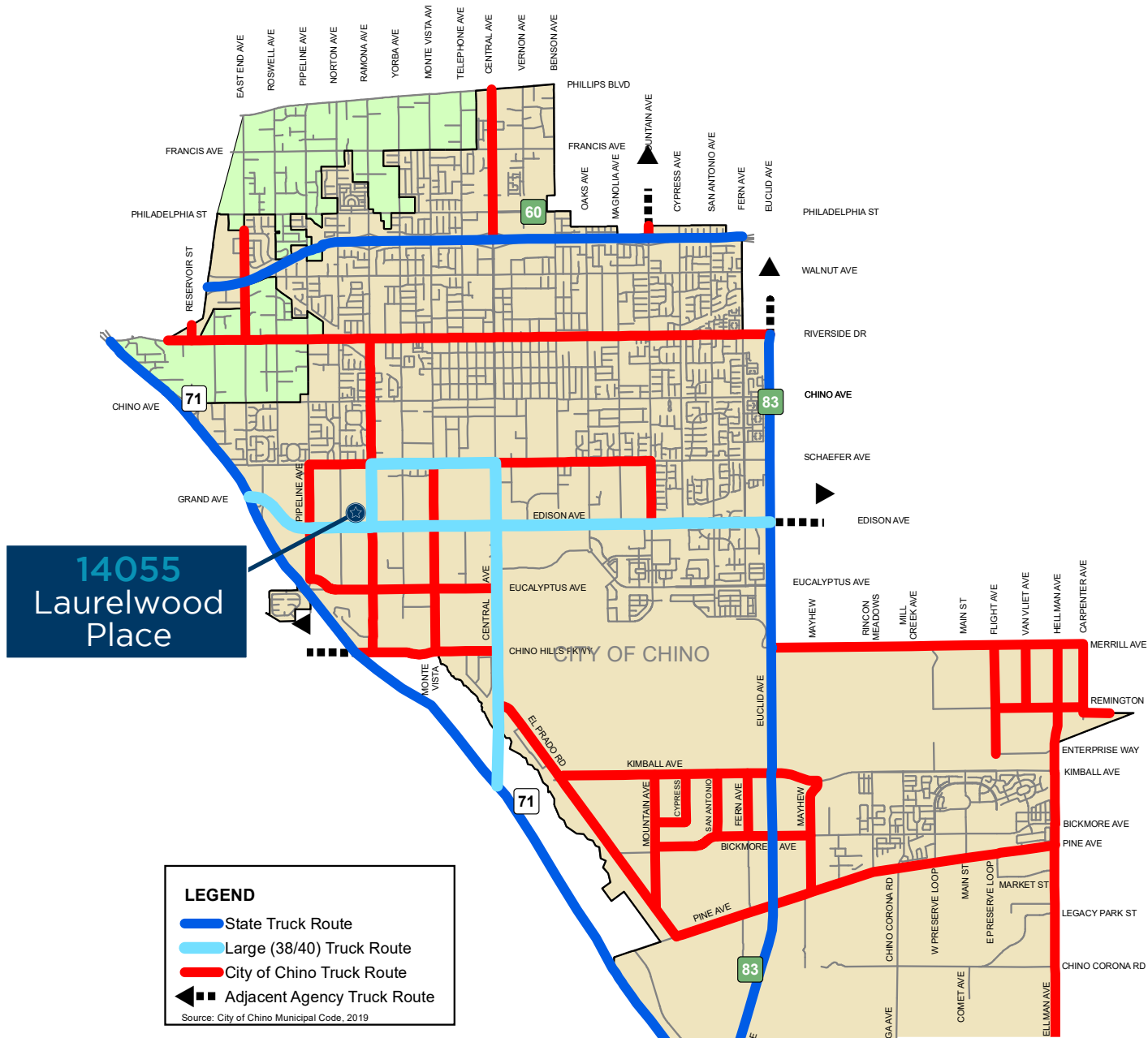
# // FLOOR PLAN



# // LOCATION MAP



# // TRUCK ROUTES





# 14055 LAURELWOOD PLACE

## CHINO, CALIFORNIA

±52,000 SF Freestanding Industrial Building on 2.00 Acres

### CONTACT

Cooper Hughes  
562 652 7486  
cooper.hughes@cushwake.com  
CA Lic. 02216870

Ryan Velasquez  
+1 909 800 0576  
ryan.velasquez@cushwake.com  
Lic. 01347459

Milo Lipson  
909 942 4648  
milo.lipson@cushwake.com  
CA Lic. 01253614



©2024 Cushman & Wakefield. All rights reserved. The material in this presentation has been prepared solely for information purposes, and is strictly confidential. Any disclosure, use, copying or circulation of this presentation (or the information contained within it) is strictly prohibited, unless you have obtained Cushman & Wakefield's prior written consent. The views expressed in this presentation are the views of the author and do not necessarily reflect the views of Cushman & Wakefield. Neither this presentation nor any part of it shall form the basis of, or be relied upon in connection with any offer, or act as an inducement to enter into any contract or commitment whatsoever. NO REPRESENTATION OR WARRANTY IS GIVEN, EXPRESS OR IMPLIED, AS TO THE ACCURACY OF THE INFORMATION CONTAINED WITHIN THIS PRESENTATION, AND CUSHMAN & WAKEFIELD IS UNDER NO OBLIGATION TO SUBSEQUENTLY CORRECT IT IN THE EVENT OF ERRORS.