

FOR SUBLEASE

## 751 Kenmoor Ave SE Suite D

Grand Rapids, Michigan 49546

1,382 RSF



### SE Grand Rapids Office Space

- Suite 751D - ~1,382 RSF
- Immediate access to I-96
- Sublease term through 12/31/2026
- 4 Private Offices, Conf Room, and common work area.

**Lease Rate: \$11.00/SF Modified Gross**



**Jason Webb, SIOR, CCIM**

Senior Director

+1 616 327 2218

jason.m.webb@cushwake.com

**CUSHMAN & WAKEFIELD**

cushmanwakefield.com

FOR SUBLEASE

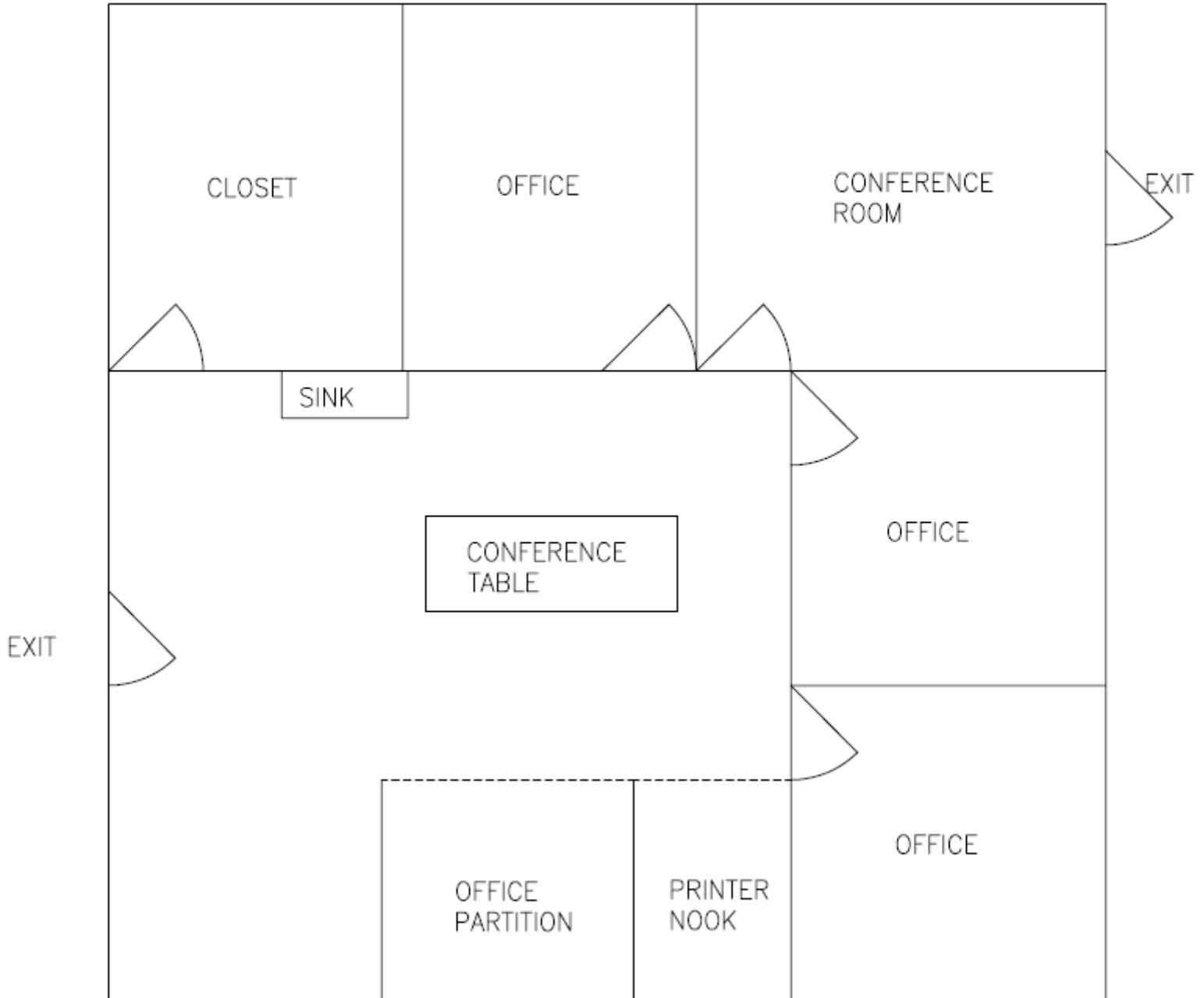
# 751 Kenmoor Ave SE

Grand Rapids, Michigan 49546

1,382 RSF



## Suite 751-D Floorplan



FOR SUBLEASE

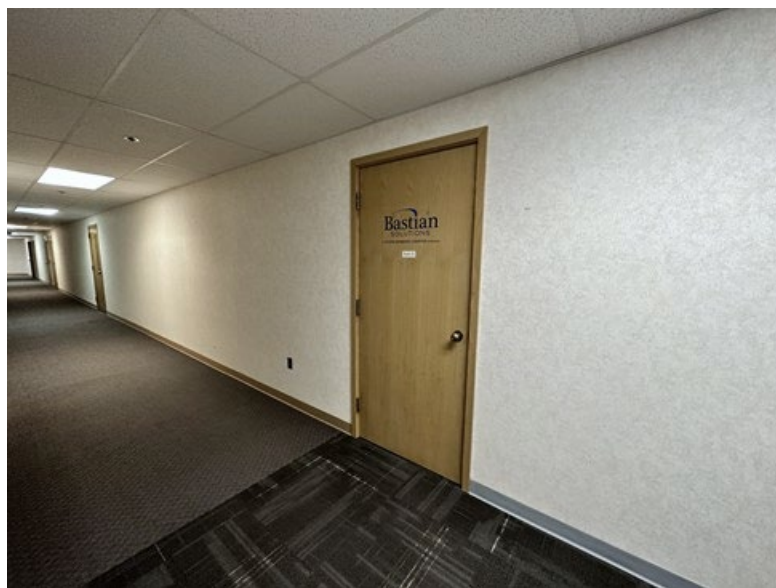
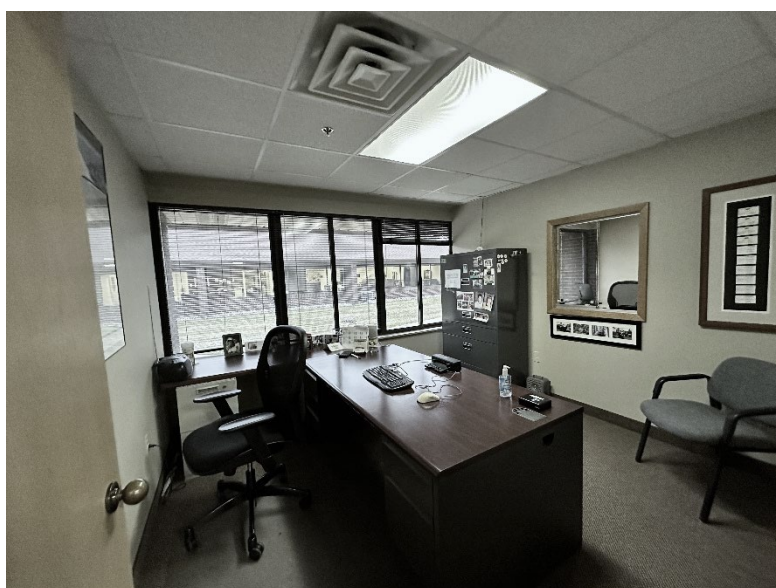
# 751 Kenmoor Ave SE

Grand Rapids, Michigan 49546

1,382 RSF



## Photos

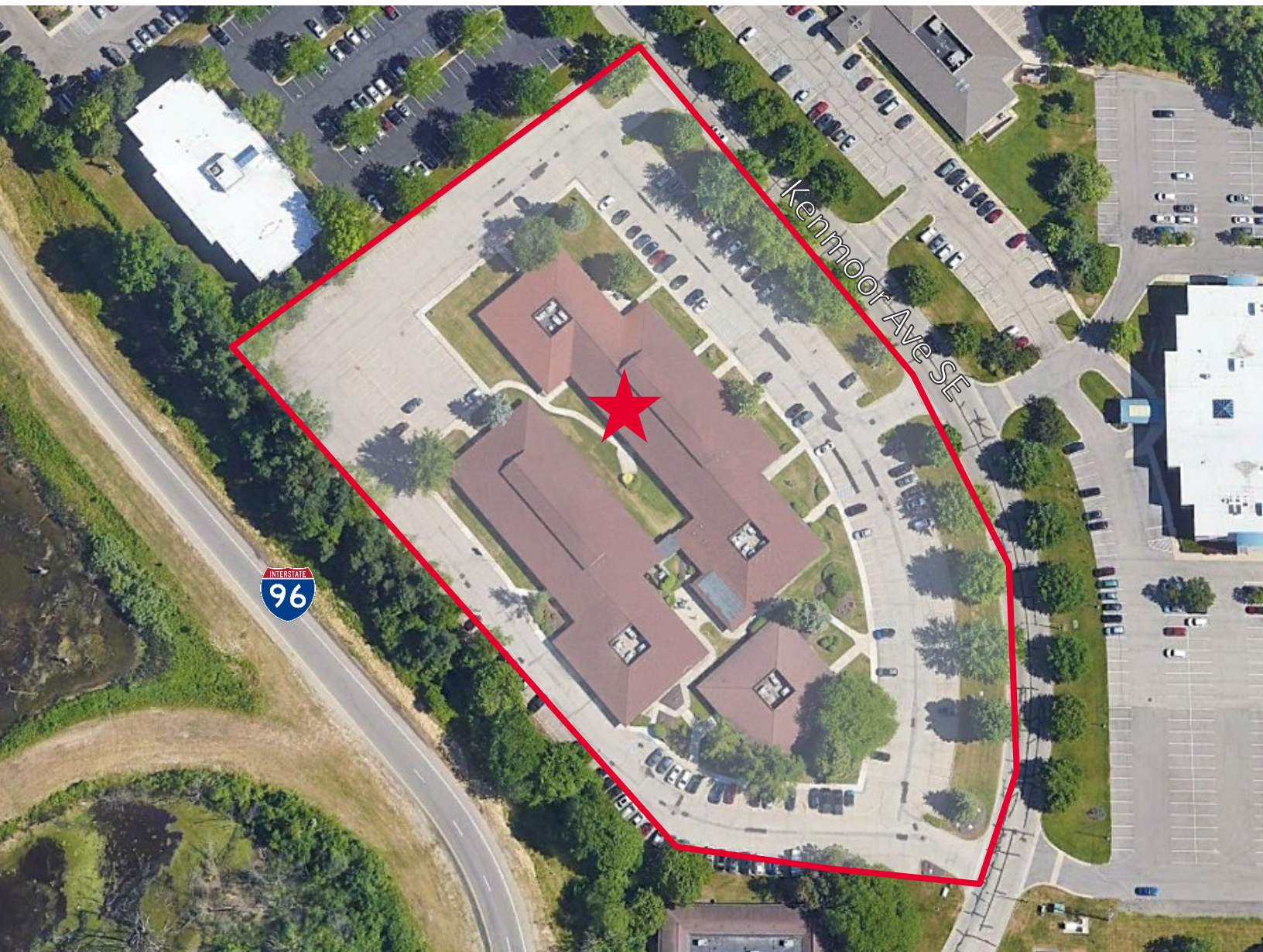


FOR SUBLEASE

# 751 Kenmoor Ave SE

Grand Rapids, Michigan 49546

1,382 RSF



**CUSHMAN & WAKEFIELD**  
cushmanwakefield.com

FOR SUBLEASE

# 751 Kenmoor Ave SE

Grand Rapids, Michigan 49546  
1,382 RSF



## GENERAL INFORMATION

Address	751 Kenmoor Ave SE Grand Rapids, MI 49546
Total Building Area	50,890 SF
Primary Use	Office
Year Built	1981
Stories	1

## SUITE # SF MONTHLY RATE

Suite 751-D	1,382	\$1,266.83
-------------	-------	------------

Tenant pays suite electric, janitorial, and phone/data,

## LISTING AGENT

**Jason Webb, SIOR, CCIM**  
Senior Director  
+1 616 327 2218  
[jason.m.webb@cushwake.com](mailto:jason.m.webb@cushwake.com)

## DEMOGRAPHICS

	Population	Average Household Income	Daytime Population
2 Mile	20,497	\$92,802	13,569
5 Miles	160,020	\$68,088	126,293
10 Miles	494,804	\$63,092	293,687

## SITE DETAILS

Total Land Area	5.148 Acres
Zoning	Commercial
Parcel ID	41-14-36-176-048
Parking	91 space (5.19/1,000 SF)
Major Crossroads	I-96 and Cascade Rd SE
Neighboring Businesses	AdvisaCare Home Care First American Title Insurance Company Cascade Oral Surgery Voyage Benefits Root Canal Specialists