



4,650 SF AVAILABLE

23333 GRISWOLD ROAD

SOUTH LYON, MI 48178

FOR MORE INFORMATION, CONTACT:

KYLE PASSAGE
Senior Associate
+1 734 323 7464
kyle.passage@cushwake.com

27777 Franklin Road, Suite 1050
Southfield, Michigan
Main +1 248 358 6100
cushmanwakefield.com



PROPERTY HIGHLIGHTS

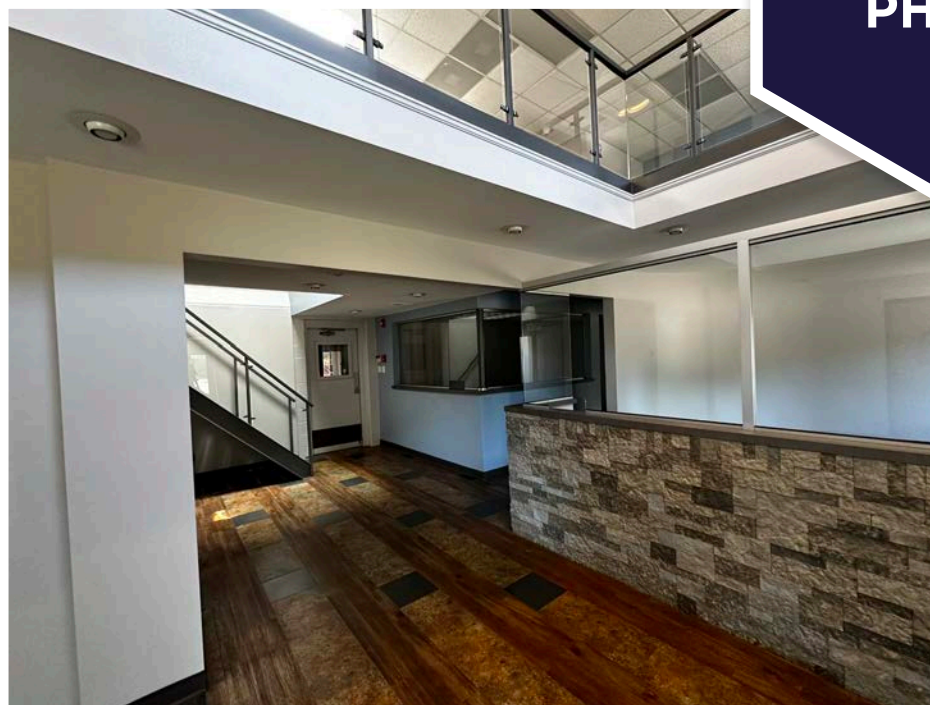


SPACE AVAILABLE		LEASE RATE
Office:	1,800-3,750 SF	\$14.00/NNN
Warehouse:	900 SF	\$12.00/NNN

PROPERTY FEATURES			
Building Size:	48,151 SF	Year Built:	1967 / Renovated 2000
Industrial Area:	41,603 SF	Bay Size:	Clear span
Office Area:	6,548 SF	Floors:	2
Acreage:	9.8	Fire Suppression:	Ordinary Hazard
Clear Height:	40'	Cranes:	1-ton
Loading:	8 grade level doors	Rail Served:	No
Parking:	100 surface spaces		

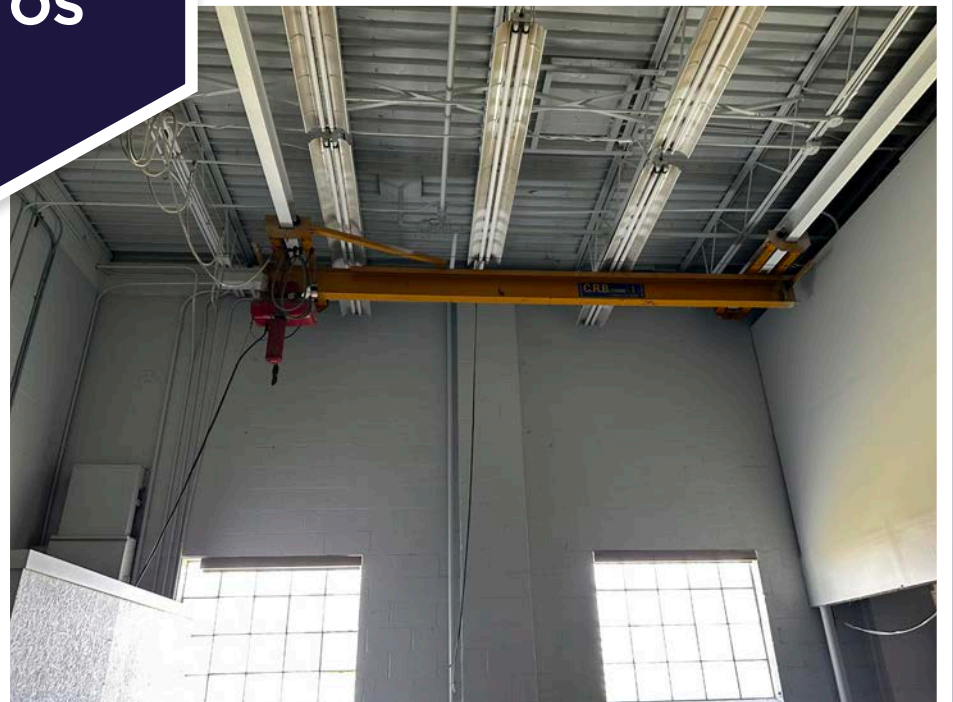


**PROPERTY
PHOTOS**





**PROPERTY
PHOTOS**



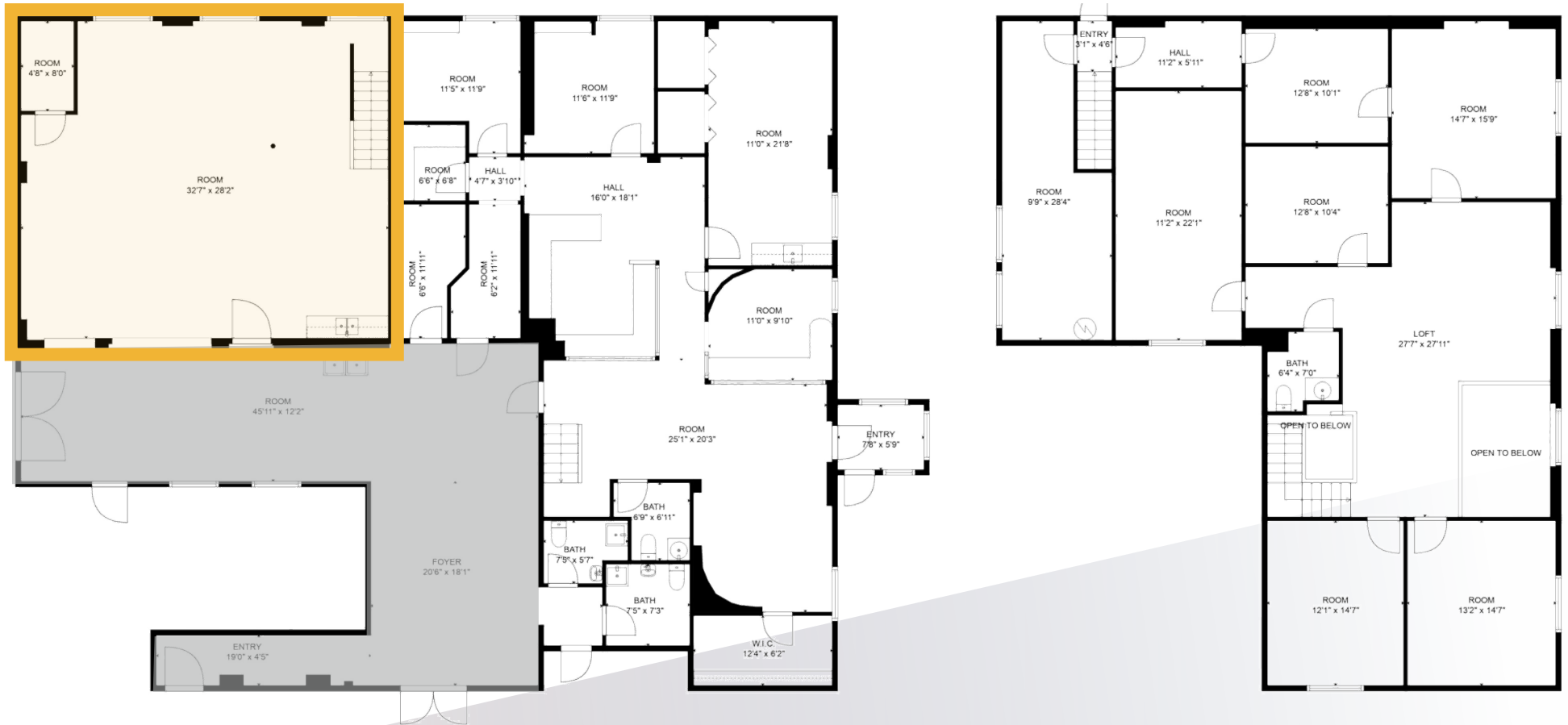
FLOOR PLANS

OFFICE SPACE
1,800-3,750 SF



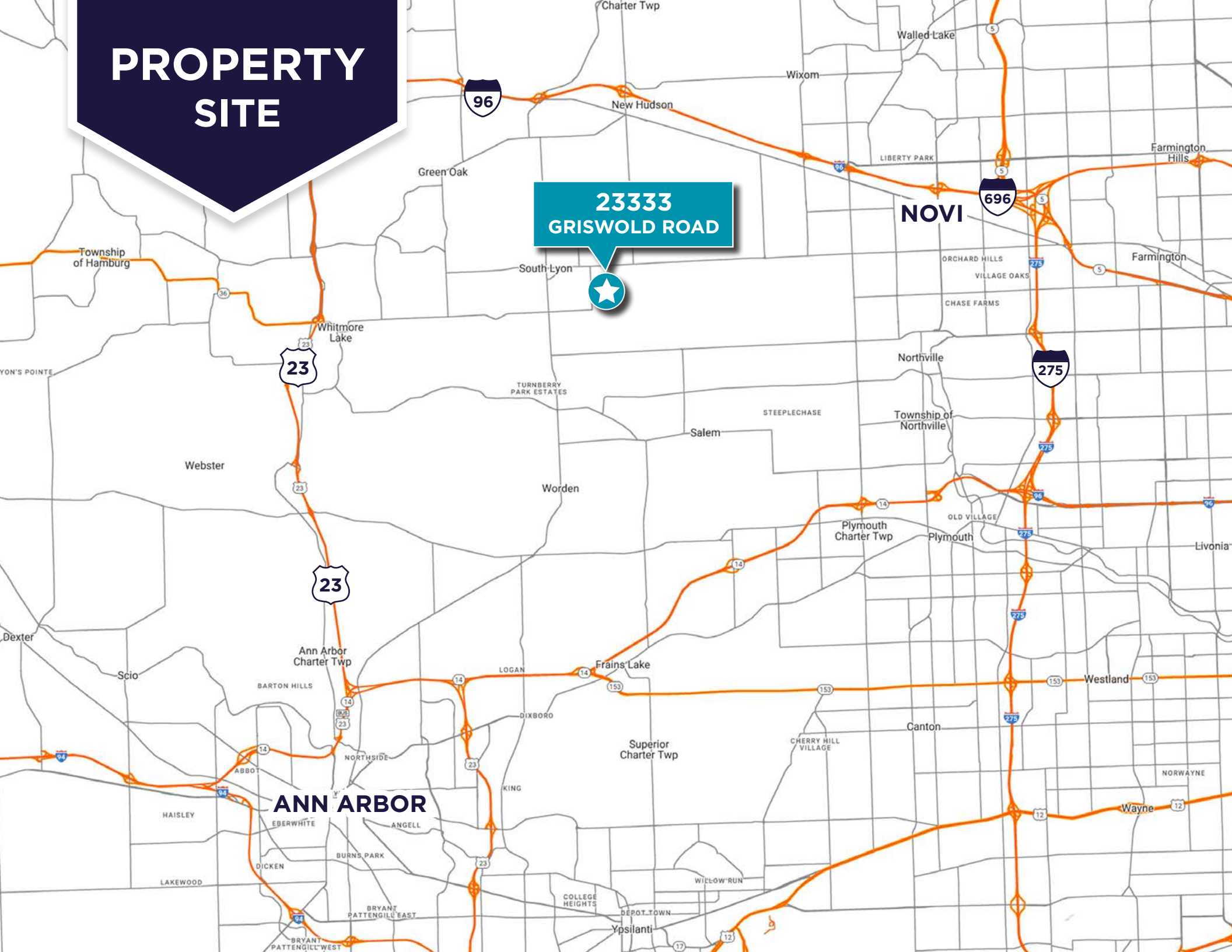
FLOOR PLANS

WAREHOUSE SPACE
900 SF

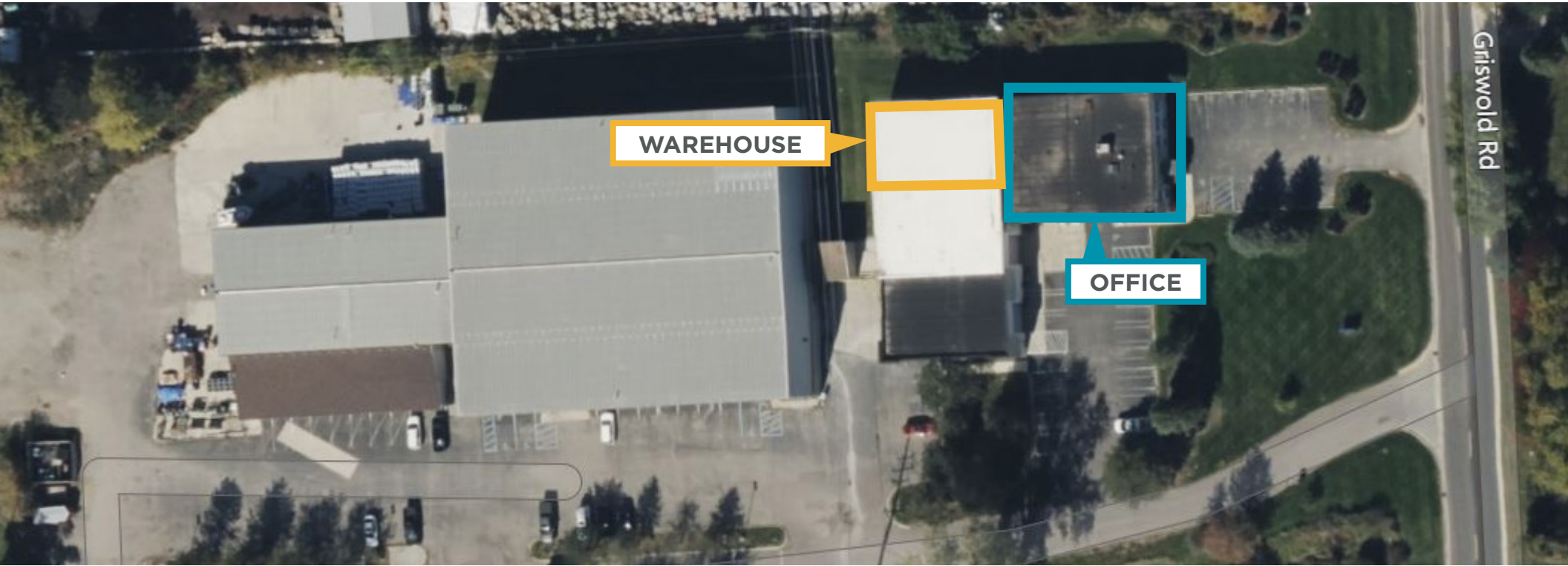


PROPERTY SITE

23333
GRISWOLD ROAD



AERIAL





**CUSHMAN &
WAKEFIELD**

FOR MORE INFORMATION, CONTACT:

KYLE PASSAGE
Senior Associate
+1 734 323 7464
kyle.passage@cushwake.com

27777 Franklin Road, Suite 1050
Southfield, Michigan
Main +1 248 358 6100
cushmanwakefield.com

©2024 Cushman & Wakefield. All rights reserved. The information contained in this communication is strictly confidential. This information has been obtained from sources believed to be reliable but has not been verified. NO WARRANTY OR REPRESENTATION, EXPRESS OR IMPLIED, IS MADE AS TO THE CONDITION OF THE PROPERTY (OR PROPERTIES) REFERENCED HEREIN OR AS TO THE ACCURACY OR COMPLETENESS OF THE INFORMATION CONTAINED HEREIN, AND SAME IS SUBMITTED SUBJECT TO ERRORS, OMISSIONS, CHANGE OF PRICE, RENTAL OR OTHER CONDITIONS, WITHDRAWAL WITHOUT NOTICE, AND TO ANY SPECIAL LISTING CONDITIONS IMPOSED BY THE PROPERTY OWNER(S). ANY PROJECTIONS, OPINIONS OR ESTIMATES ARE SUBJECT TO UNCERTAINTY AND DO NOT SIGNIFY CURRENT OR FUTURE PROPERTY PERFORMANCE.

