

US Bank Building

300 Prairie Center Drive, Eden Prairie, MN



HOME

HIGHLIGHTS

AVAILABILITY

LOCATION

FOR LEASE



For more information, please contact:

Gordie Hampson
Senior Director
+1 952 465 3310
gordie.hampson@cushwake.com

Ryan Hampson
Associate
+1 952 465 3309
ryan.hampson@cushwake.com

Cushman & Wakefield
3500 American Blvd W Suite 200
Minneapolis, MN 55431
cushmanwakefield.com

US Bank Building

300 Prairie Center Drive, Eden Prairie, MN

HOME

HIGHLIGHTS

AVAILABILITY

LOCATION

Property Highlights

- 24,510 square foot 3-story office building
- Conference space available to tenants in U.S. Bank's Community Room
- Highly visible building lobby space available
- Monument signage
- Attractive site with views of Anderson Lakes
- On-site bank with drive-thru service
- Abundant surface parking
- Premier Eden Prairie location offering excellent proximity to numerous area restaurants, hotels and Eden Prairie Center

BUILDING INFORMATION

BUILDING SIZE	24,510 SF
PARKING RATIO	4.48/1,000
AVAILABILITY	1,764 SF
LEASE RATE	Negotiable
2021 ESTIMATED TAX & OPER. EXP.	\$12.90 PSF



For more information, please contact:

Gordie Hampson
Senior Director
+1 952 465 3310
gordie.hampson@cushwake.com

Ryan Hampson
Associate
+1 952 465 3309
ryan.hampson@cushwake.com

Cushman & Wakefield
3500 American Blvd W Suite 200
Minneapolis, MN 55431
cushmanwakefield.com

US Bank Building

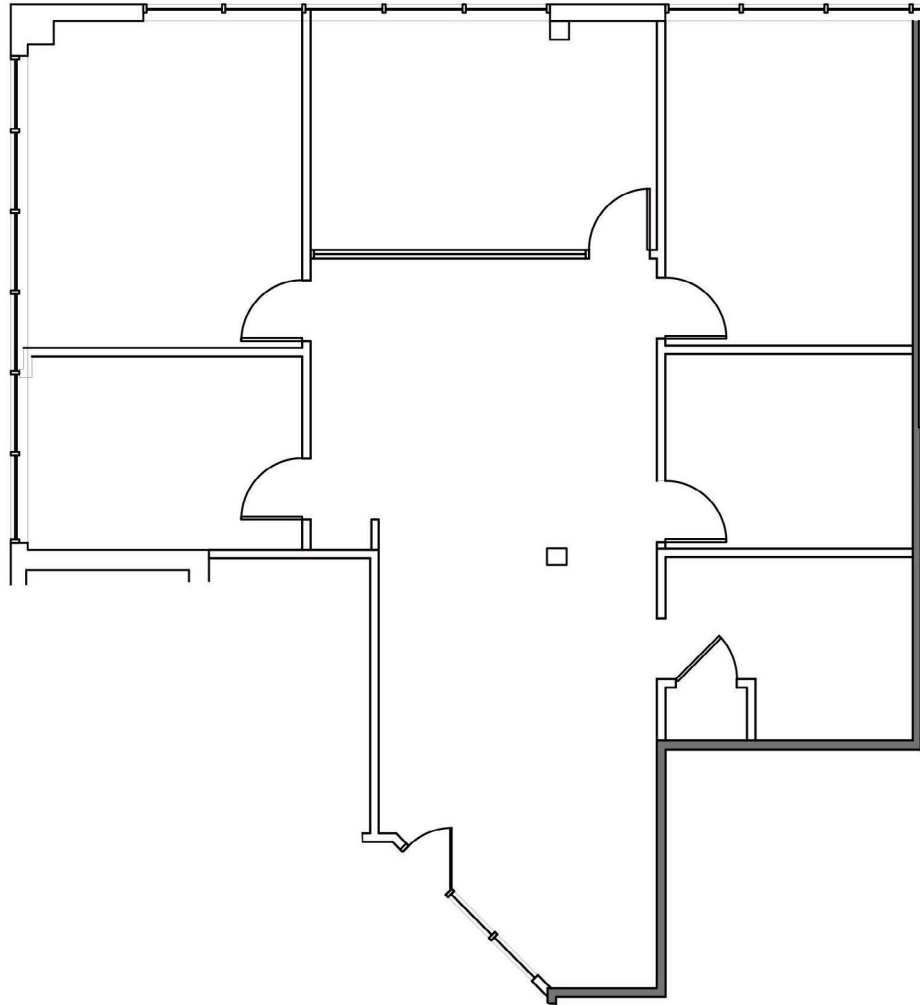
300 Prairie Center Drive, Eden Prairie, MN

HOME

HIGHLIGHTS

AVAILABILITY

LOCATION



Suite 110
1,764 RSF



Key Plan - 1st Floor

For more information, please contact:

Gordie Hampson
Senior Director
+1 952 465 3310
gordie.hampson@cushwake.com

Ryan Hampson
Associate
+1 952 465 3309
ryan.hampson@cushwake.com

Cushman & Wakefield
3500 American Blvd W Suite 200
Minneapolis, MN 55431
cushmanwakefield.com

US Bank Building

300 Prairie Center Drive, Eden Prairie, MN

HOME

HIGHLIGHTS

AVAILABILITY

LOCATION

