

# 14

## VANSCO ROAD

ETOBICOKE

SUITE 200



FOR SUBLEASE

**9,018 SF**  
**AVAILABLE**





# 14 FOR SUBLEASE

## VANSCO ROAD

ETOBICOKE

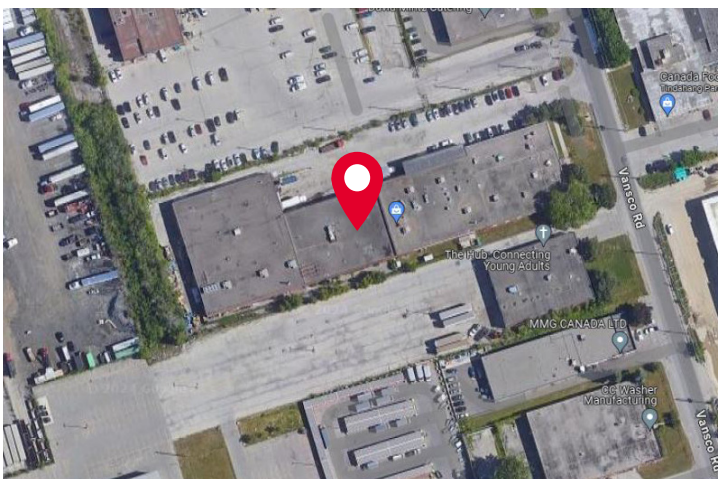
# SUITE 200

### DETAILS

Space Available:	Suite 200 - 9,018 SF
Net Rent:	\$26.50 PSF
Additional Rent:	\$5.10 PSF
Term:	February 28, 2029

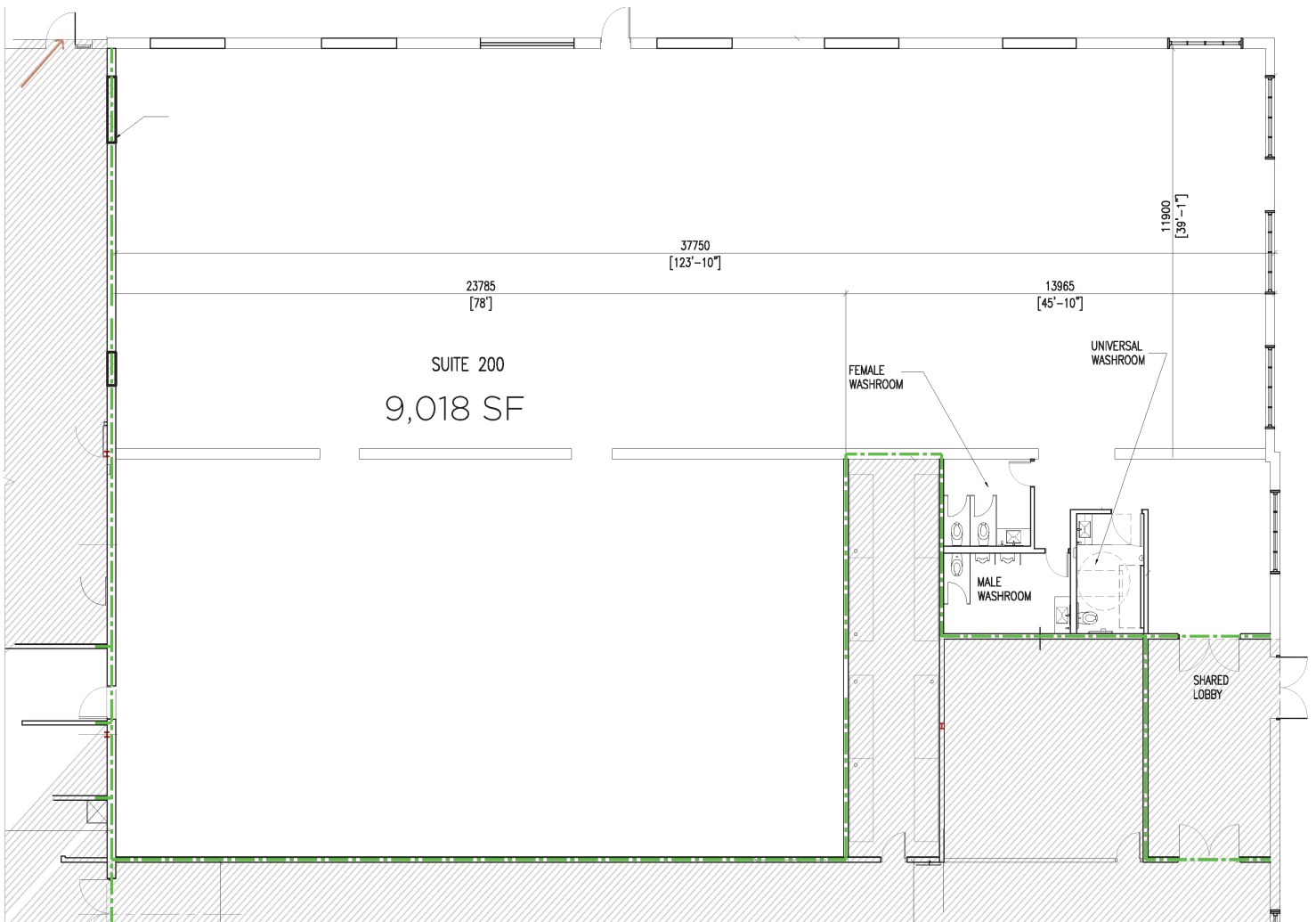
### HIGHLIGHTS

- ▶ Loft-inspired with prominent street exposure and parking at door
- ▶ Open concept warehouse/workshop/office space
- ▶ Clean warehouse interior, bright with soaring ceilings and open footprint
- ▶ 12 - 14 feet ceiling heights
- ▶ 200-Amp and 600-Volt power capacity
- ▶ Central location just north of the Gardiner Expressway, with quick access to downtown Toronto and Pearson International Airport
- ▶ Easy access to TTC subway stops at both Kipling and Islington
- ▶ Close to Highway 427 and the QEW

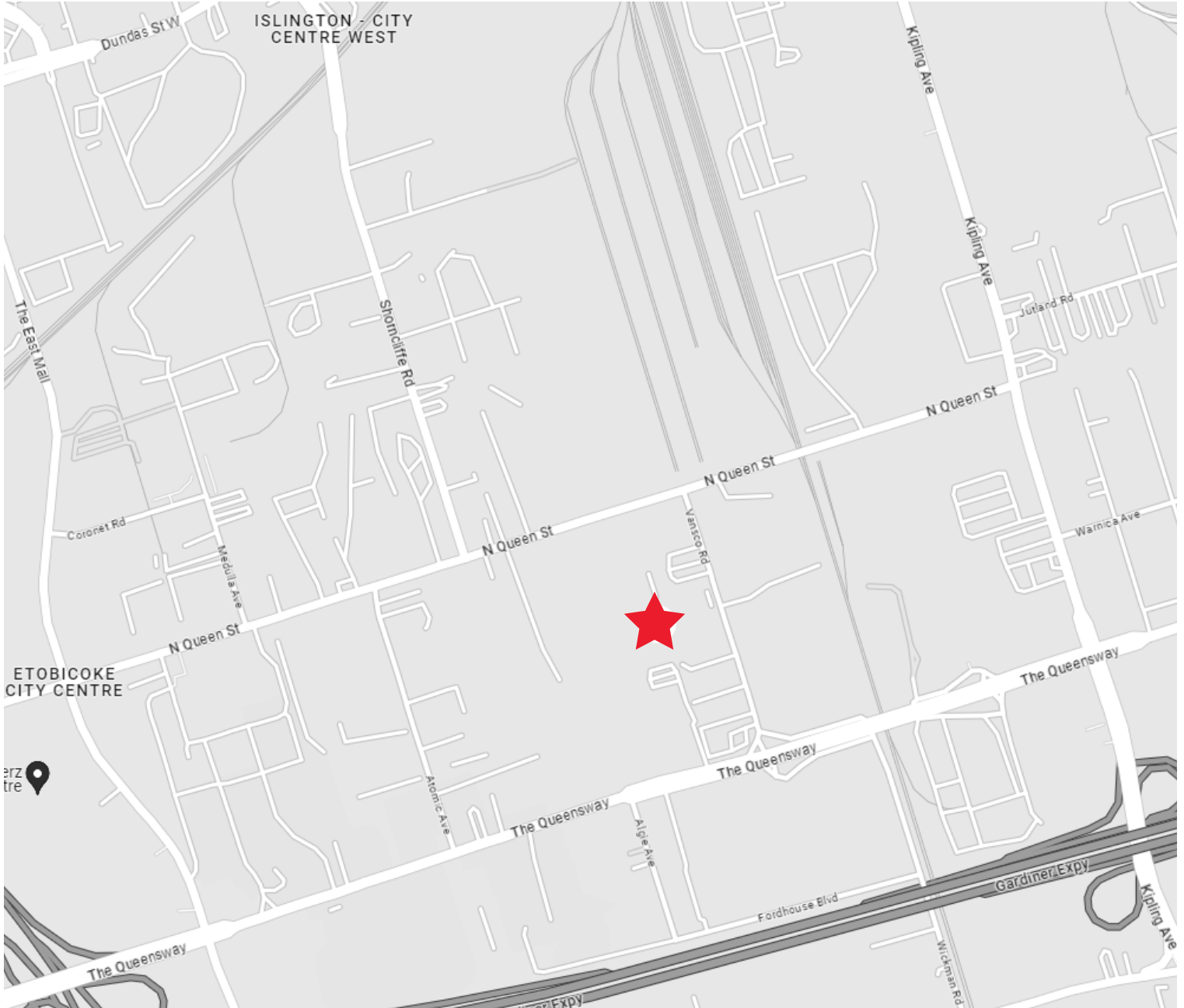


# FLOOR PLAN

## SUITE 200

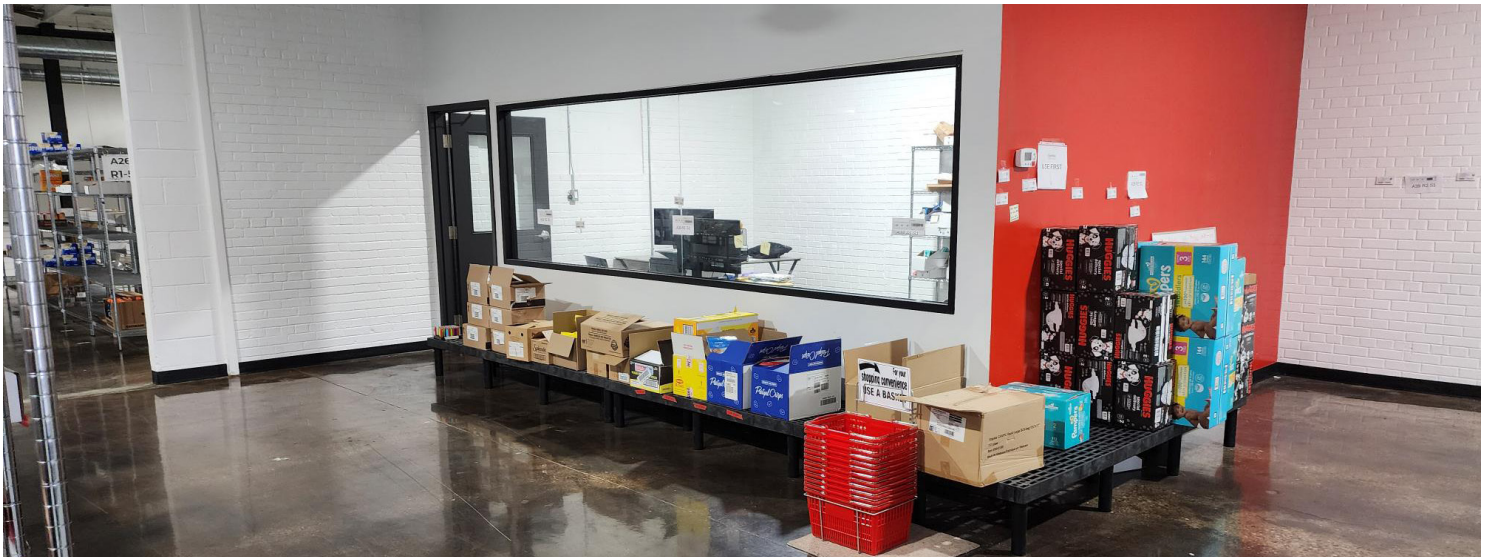


# LOCATION MAP





# PROPERTY PHOTOS





# 14

## VANSCO ROAD

ETOBICOKE

SUITE 200



For more information, please contact:

**JOHN M. FILICE, PH.D.\*\***

Senior Vice President | Broker | Advisory & Brokerage Services

Industrial Sales & Leasing - Land - Investment

Direct: +1 905 501 6433

Mobile: +1 416 821 3010

Fax: +1 905 568 9444

[john.filice@cushwake.com](mailto:john.filice@cushwake.com)

**GLORIA OR\***

Associate | Industrial Sales & Leasing

Direct: +1 416 359 2420

Mobile: +1 416 809 9222

[gloria.or@cushwake.com](mailto:gloria.or@cushwake.com)

**Cushman & Wakefield ULC, Brokerage**

**1 Prologis Boulevard, Suite 300**

**Mississauga, Ontario L5W 0G2**

**Tel: +1 905 568 9500**

**[cushmanwakefield.com](http://cushmanwakefield.com)**