



Additional 31.98 Acres Available
Through Different Seller



Hopper Rd

Clapp Farms Rd

Burlington Road

Mt. Hope Church Road

DOLLAR
GENERAL

AVAILABLE FOR SALE

16.4 ACRES

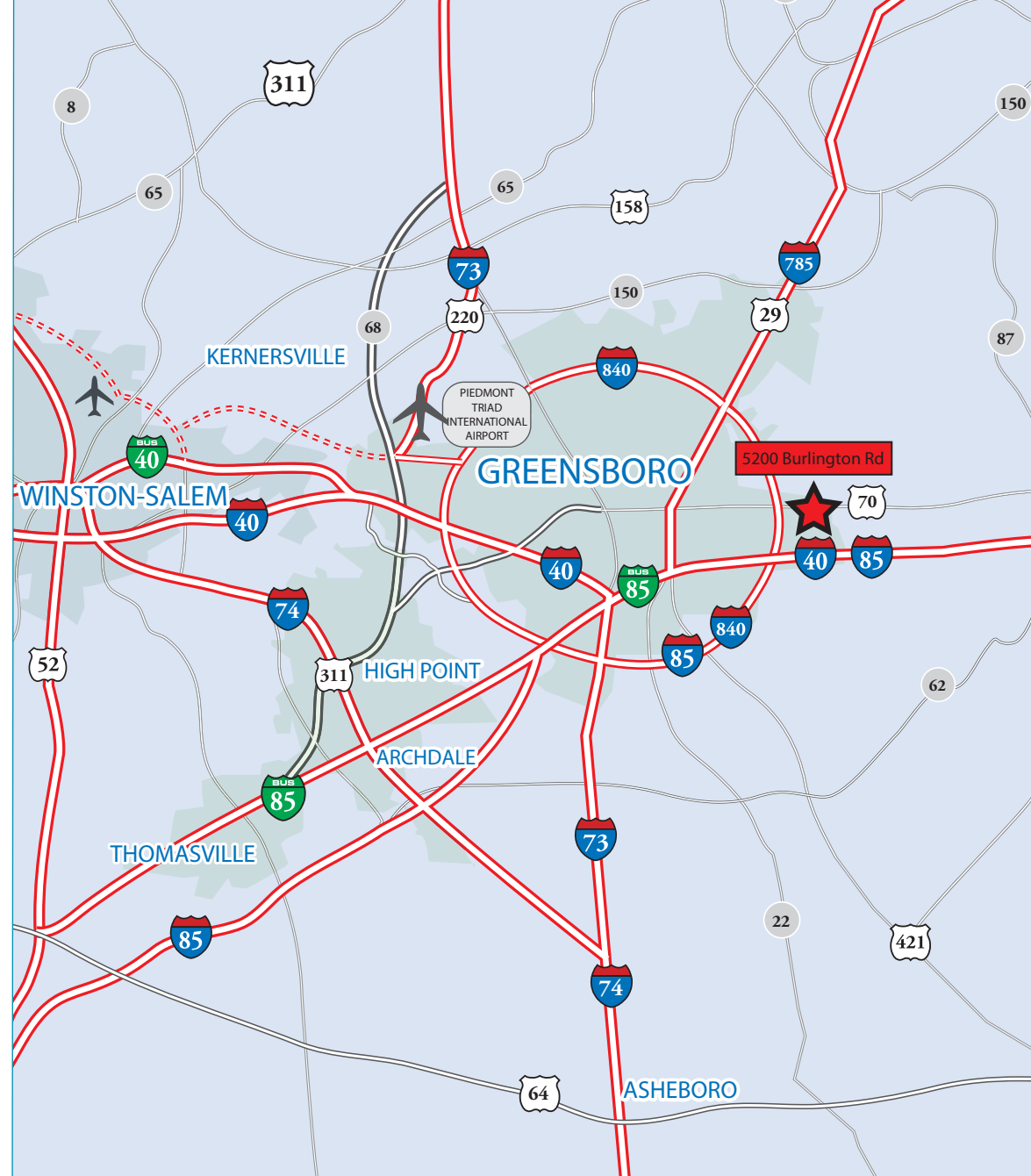
5200 BURLINGTON ROAD
MCLEANSVILLE, NC 27301



16.4 ACRES

5200 BURLINGTON ROAD, MCLEANSVILLE, NC 27301

Address:	5200 Burlington Road McLeansville, NC 27301
Sale Price:	\$150,000 Per Acre
Land Area:	16.4 Acres
Parcel ID:	Guilford County Parcel ID #: 789590455
Zoning:	RS-40
Development:	Site has potential for varying uses including multi-family, retail and industrial development. Will require re-zoning and annexation into the City of Greensboro for utilities access.
Utilities (Available With Annexation):	<ul style="list-style-type: none"> Water: 12" line at Mt. Hope Church Rd and 16" line at Burlington Rd Sewer: On the North side of Burlington Rd (8" line) and South side (18" line) but stops at the intersection of Mt. Hope Church Rd Master plan to extend water down Mt. Hope Church Rd
Location:	Located in a High-Growth Corridor with close access to Hwy 840 (Greensboro Urban Loop) and nearby access to I-40 & I-85, at a fully signalized intersection.
Additional Acreage Available:	48.38 contiguous acres can be made available by way of assemblage with neighboring property which is also listed by Cushman & Wakefield. Guilford County PIN #s 7895-90-1070 & 7894-99-8631. For more details, please reach out to the listing broker.



Jason Ofsanko, SIOR
 Managing Director
 +1 336 812 3300
 jason.ofsanko@cushwake.com

Jordan Mitchell
 Director
 +1 336 201 0495
 jordan.mitchell@cushwake.com

628 Green Valley Road, Ste. 202
 Greensboro, NC 27408
 Main +1 336 668 9999
 Fax +1 336 668 0888
cushmanwakefield.com

16.4 ACRES

5200 BURLINGTON ROAD, MCLEANSVILLE, NC 27301

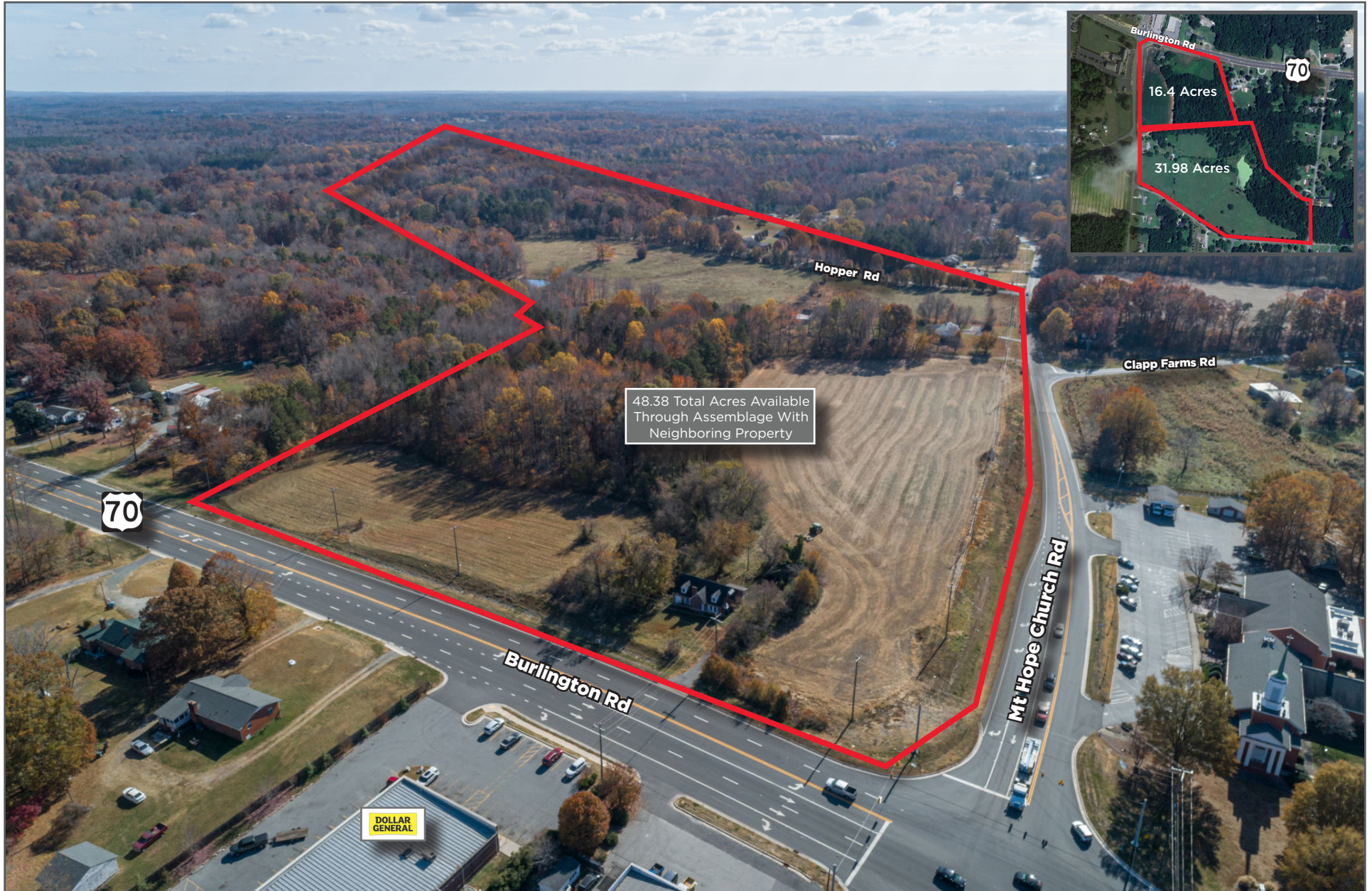
AERIAL PHOTOS



16.4 ACRES

5200 BURLINGTON ROAD, MCLEANSVILLE, NC 27301

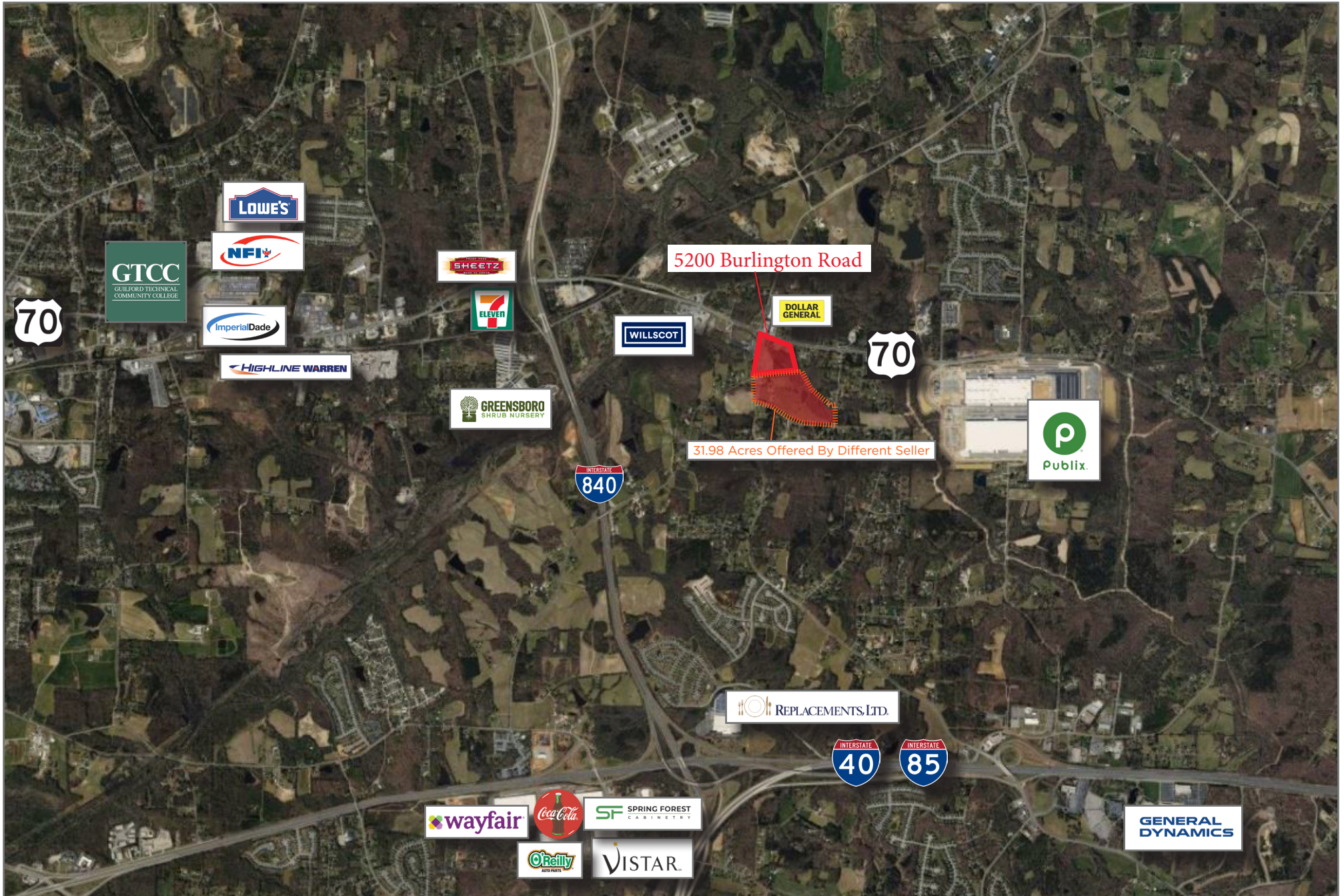
ASSEMBLAGE DETAILS



16.4 ACRES

5200 BURLINGTON ROAD, MCLEANSVILLE, NC 27301

LOCATION MAP





FOR MORE INFORMATION, CONTACT:

JASON OFSANKO, SIOR

Managing Director

+1 336 821 3300

jason.ofsanko@cushwake.com

JORDAN MITCHELL

Director

+1 336 201 0495

jordan.mitchell@cushwake.com

©2023 Cushman & Wakefield. All rights reserved. The material in this presentation has been prepared solely for information purposes, and is strictly confidential. Any disclosure, use, copying or circulation of this presentation (or the information contained within it) is strictly prohibited, unless you have obtained Cushman & Wakefield's prior written consent. The views expressed in this presentation are the views of the author and do not necessarily reflect the views of Cushman & Wakefield. Neither this presentation nor any part of it shall form the basis of, or be relied upon in connection with any offer, or act as an inducement to enter into any contract or commitment whatsoever. NO REPRESENTATION OR WARRANTY IS GIVEN, EXPRESS OR IMPLIED, AS TO THE ACCURACY OF THE INFORMATION CONTAINED WITHIN THIS PRESENTATION, AND CUSHMAN & WAKEFIELD IS UNDER NO OBLIGATION TO SUBSEQUENTLY CORRECT IT IN THE EVENT OF ERRORS.

