

Plymouth Business Center

3905 Annapolis Avenue North, Plymouth, MN



FOR LEASE



12 Building Development

Property Highlights

- Established business park with over 700,000 square feet of space
- Up to 18,173 square feet available
- Multiple product types including office/showroom, office/warehouse, and bulk/warehouse buildings
- Dock and drive-in loading
- Landmark visibility provides outstanding corporate identity and easy recognition for visiting clientele
- Exceptional access to I-494 via Highway 55 on the south and Rockford Road on the north
- Area amenities include childcare, retail shops, hotels and restaurants

Dave Paradise
Senior Director
+1 952 893 8226
dave.paradise@cushwake.com

Sydney Johnson, SIOR
Senior Director
+1 952 893 8840
sydney.johnson@cushwake.com

Cushman & Wakefield
3500 American Blvd W Suite 200
Minneapolis, MN 55431
cushmanwakefield.com

Plymouth Business Center

3905 Annapolis Avenue North, Plymouth, MN



FOR LEASE

BUILDING INFORMATION

Building Size	39,410 SF
Year Built	1989
Clear Height	12'
Bay Depth	120'
Column Spacing	32' x 32'
Power	1,200 AMPS 480/227V Phase 3
Sprinklers	Yes
Parking	96 stalls
Lease Rates	Negotiable
2024 Tax & Cam	\$3.09 PSF Tax \$1.72 PSF CAM \$4.81 PSF Total

Property Information

- New roof, landscaping and interior finishes
- 12 building development totalling over 700,000 sf
- Expansion capabilities within the complex
- Locally owned, professionally maintained and operated
- Excellent access to I-494 via Highway 55 & Rockford Road
- Area Amenities include childcare, retail shops, hotels and restaurants

Space Available

Suite	Total SF	Office SF	Tech	Warehouse SF	Loading	Availability
105	18,173	11,558	3,565	3,050	2 drive-ins	Now
<i>Proposed Demised 105A</i>	10,223	10,223	-	-	2 drive-ins	Now
<i>Proposed Demised 105B</i>	7,950	5,842	2,108	-	3 drive-ins	Now
195	15,640	14,205	1,435	-	4 drive-ins	5/1/2025

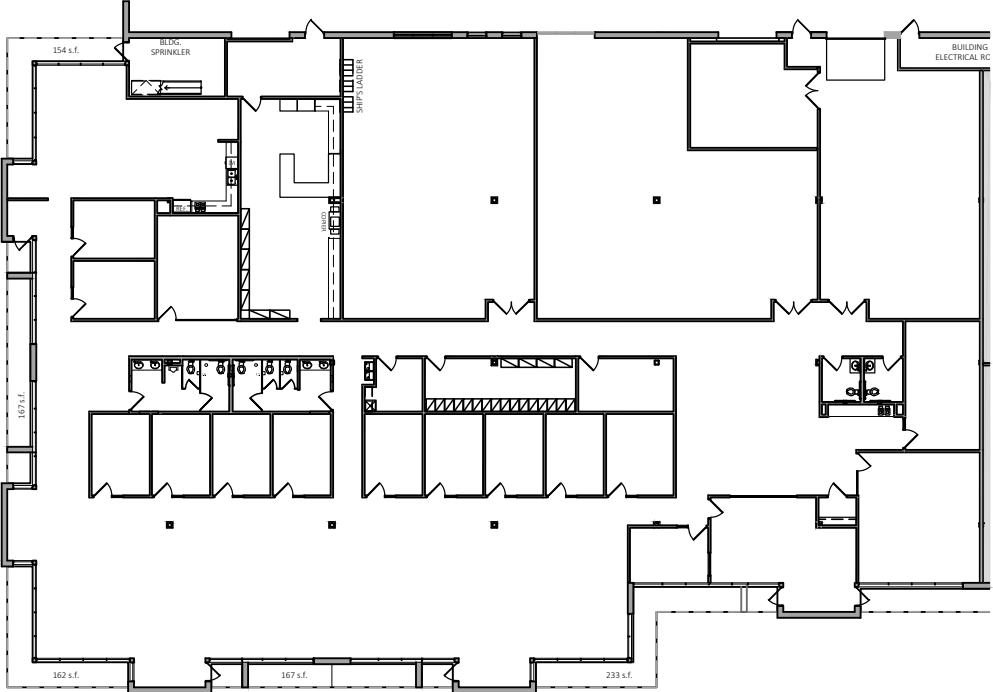
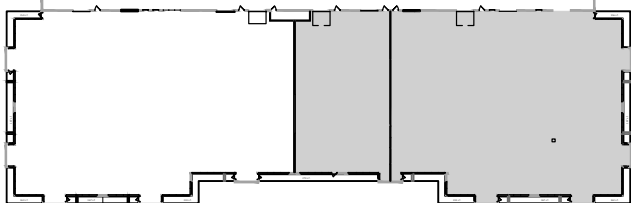
Plymouth Business Center

3905 Annapolis Avenue North, Plymouth, MN



FOR LEASE

Suite 105



AVAILABLE

SUITE 105

OFFICE	=	11,558 S.F.
TECH	=	3,565 S.F.
WAREHOUSE	=	3,050 S.F.
TOTAL	=	18,173 S.F.



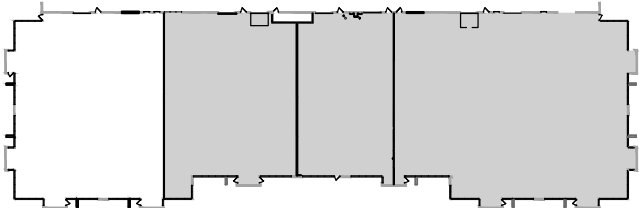
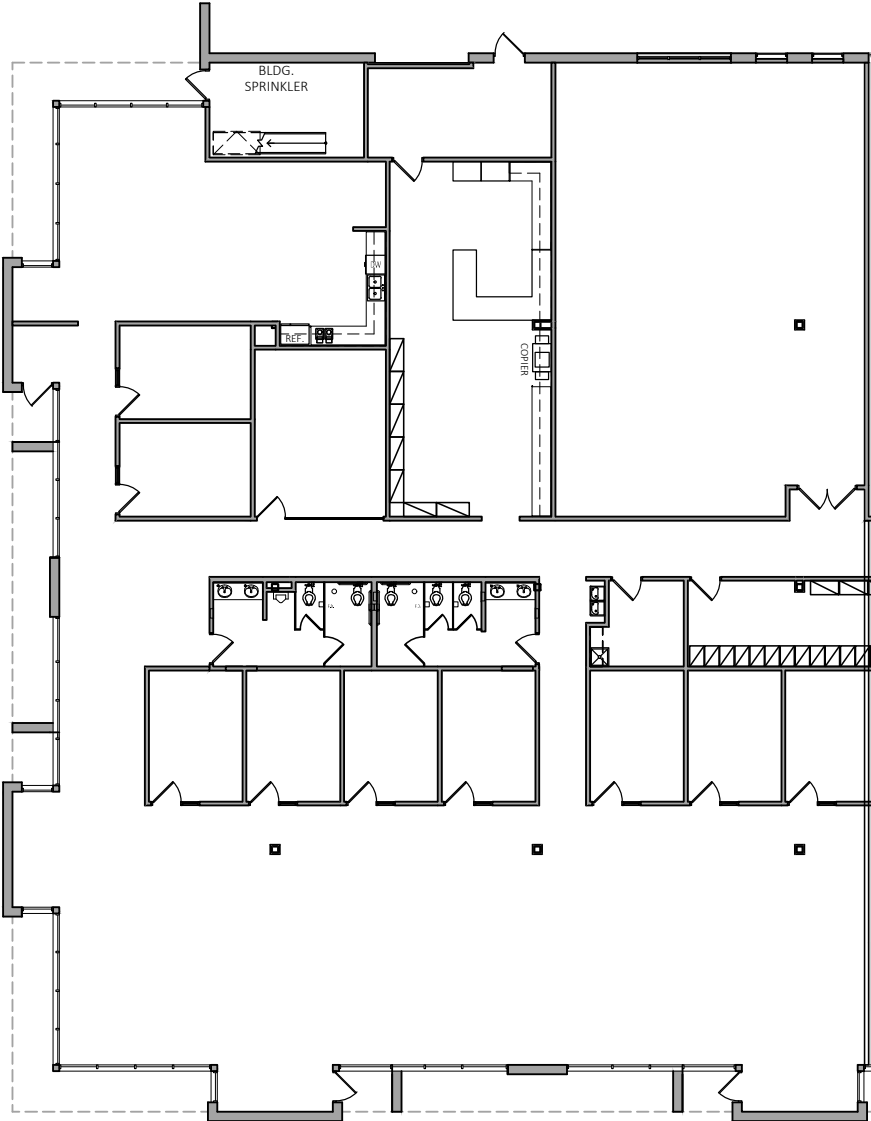
Plymouth Business Center

3905 Annapolis Avenue North, Plymouth, MN



FOR LEASE

Proposed Demised Suite 105A



AVAILABLE SUITE 105A

OFFICE	=	10,223 S.F.
TOTAL	=	10,223 S.F.



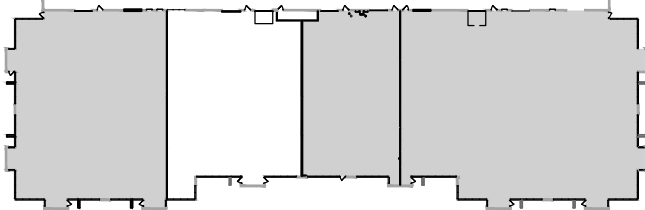
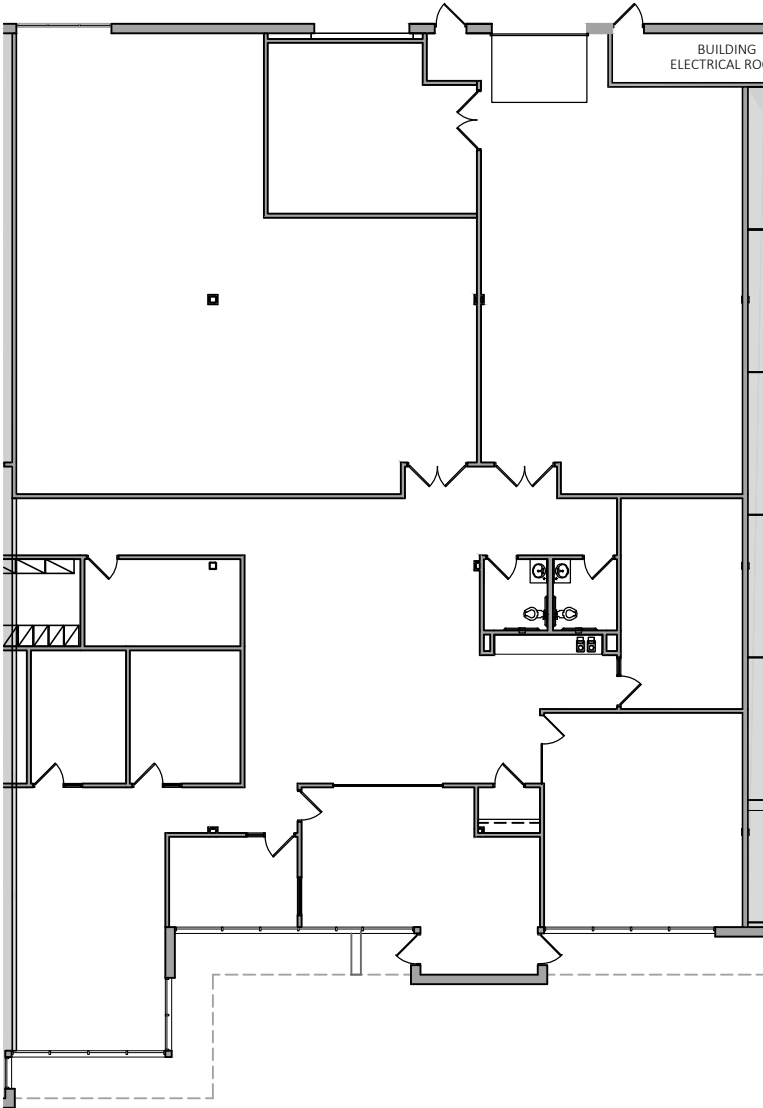
Plymouth Business Center

3905 Annapolis Avenue North, Plymouth, MN



FOR LEASE

Proposed Demised Suite 105B



AVAILABLE SUITE 105B

OFFICE	=	5,842 S.F.
WAREHOUSE	=	2,108 S.F.
TOTAL	=	7,950 S.F.



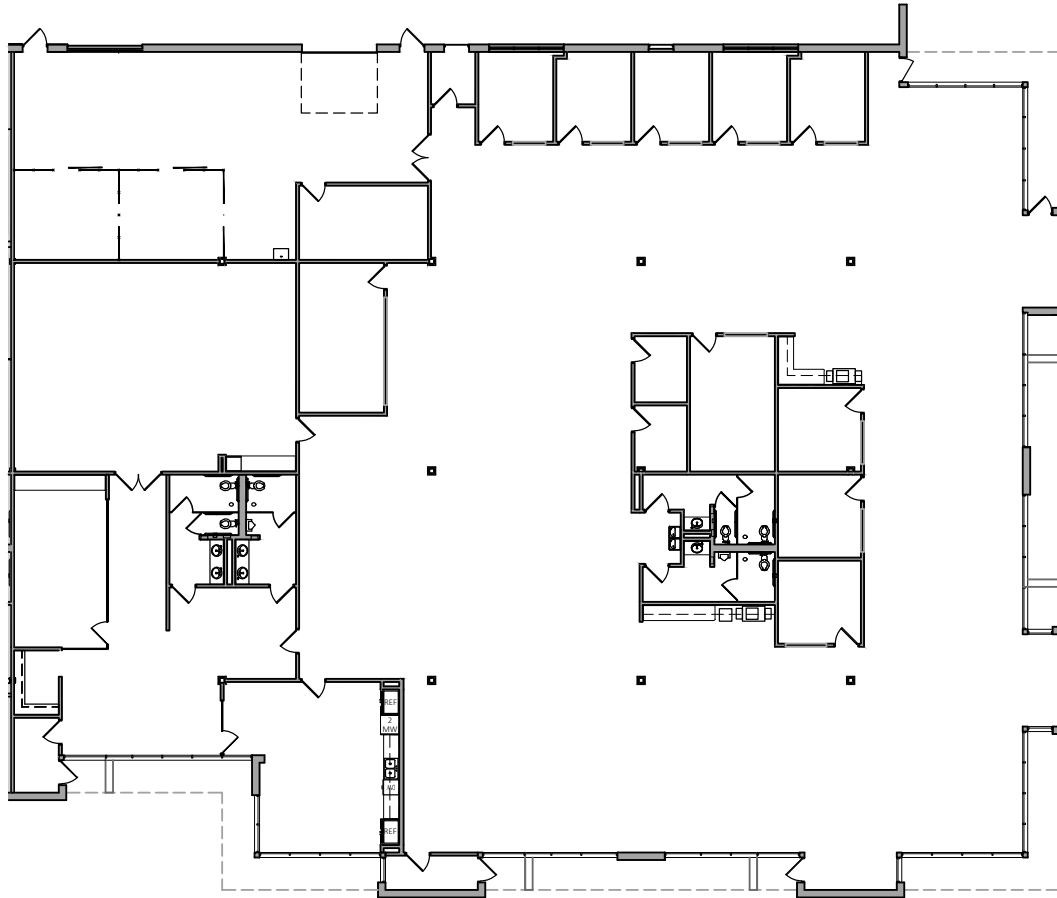
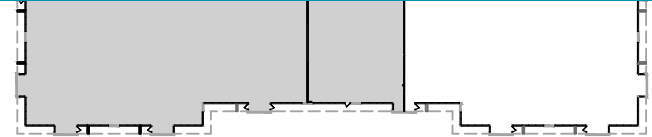
Plymouth Business Center

3905 Annapolis Avenue North, Plymouth, MN



FOR LEASE

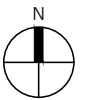
Suite 195



AVAILABLE

SUITE 195

OFFICE	=	14,205 S.F.
WAREHOUSE	=	1,435 S.F.
TOTAL	=	15,640 S.F.



PBC 3905 BUILDING

PLYMOUTH, MINNESOTA

August 28, 2024



Plymouth Business Center

3905 Annapolis Avenue North, Plymouth, MN



FOR LEASE



Plymouth Business Center

3500

3550

3650

3700

3750

3850

3800

3900

3905

3955