



SUBLEASE AVAILABLE



Travelers Tower I

26555 Evergreen Road, Suite 650
Southfield, MI 48076

6,701 SF

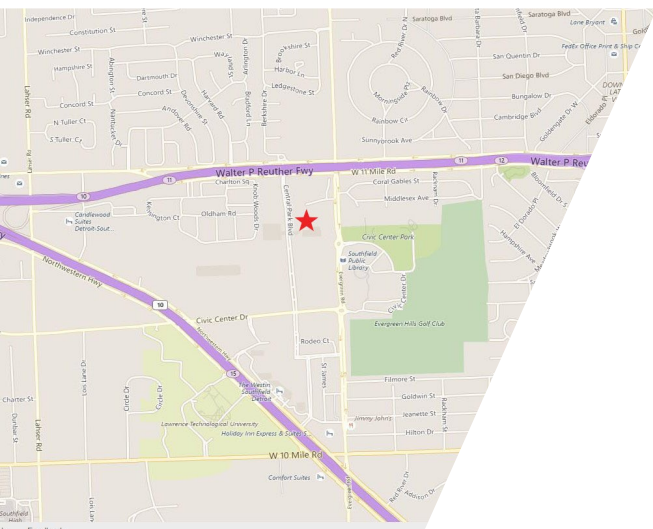
PROPERTY HIGHLIGHTS

Suite:

- Suite is fully furnished
- 3 offices on the window line; 35 workstations
- 3 conference rooms, IT room, full kitchenette
- Storage room, printer area
- Sublease through March 2025

Building:

- 471,492 square feet; recently renovated lobby
- Food service; 24/7 sundry shop
- Fitness facility in building for easy access
- Conference center
- Located in a prime office park area



Brian Piergentili

Executive Director

+1 248 358 6103

brian.piergentili@cushwake.com

27777 Franklin Road, Suite 1050 | Southfield, MI 48034

+1 248 358 6100

cushmanwakefield.com

©2020 Cushman & Wakefield. All rights reserved. The information contained in this communication is strictly confidential. This information has been obtained from sources believed to be reliable but has not been verified. No warranty or representation, express or implied, is made as to the condition of the property (or properties) referenced herein or as to the accuracy or completeness of the information contained herein, and same is submitted subject to errors, omissions, change of price, rental or other conditions, withdrawal without notice, and to any special listing conditions imposed by the property owner(s). Any projections, opinions or estimates are subject to uncertainty and do not signify current or future property performance.

Travelers Tower I

26555 Evergreen Road, Suite 650, Southfield, MI 48076

6,701 SF



PROPERTY PHOTOS



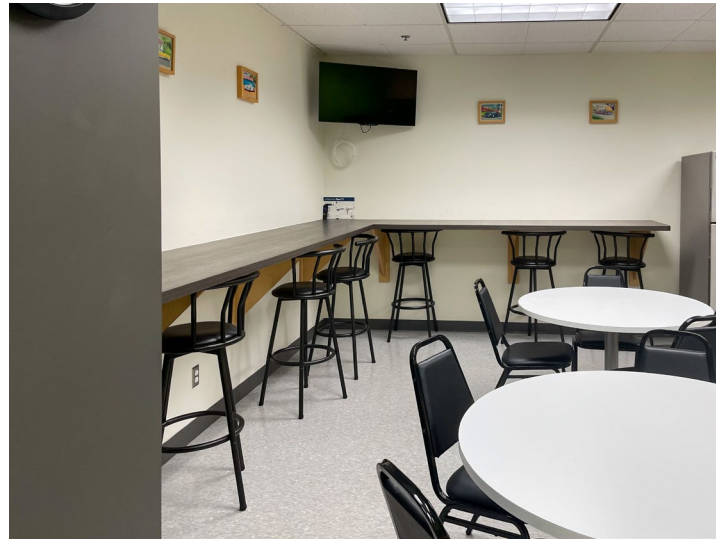
Travelers Tower I

26555 Evergreen Road, Suite 650, Southfield, MI 48076

6,701 SF



PROPERTY PHOTOS



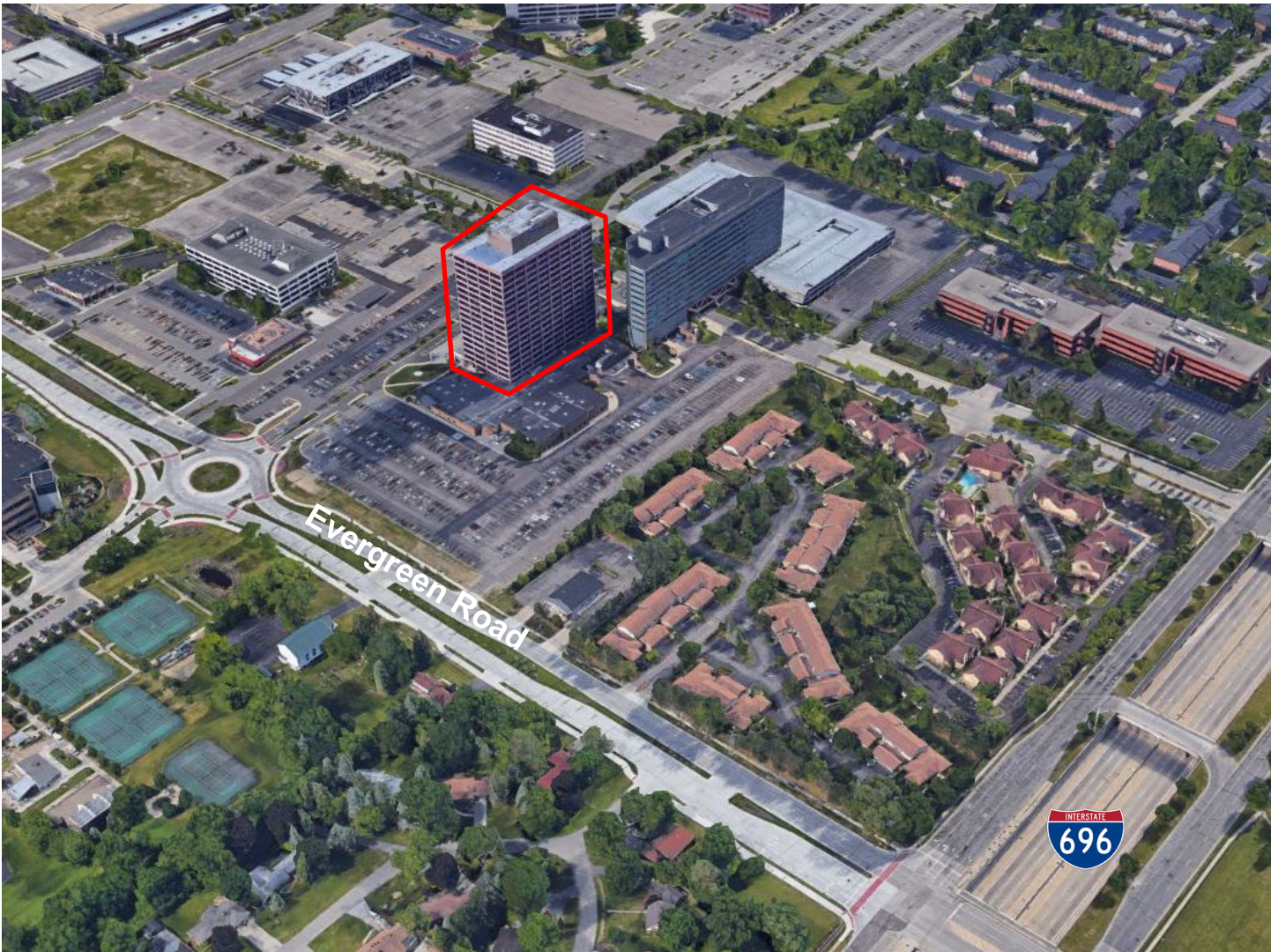
Travelers Tower I

26555 Evergreen Road, Suite 650, Southfield, MI 48076

6,701 SF



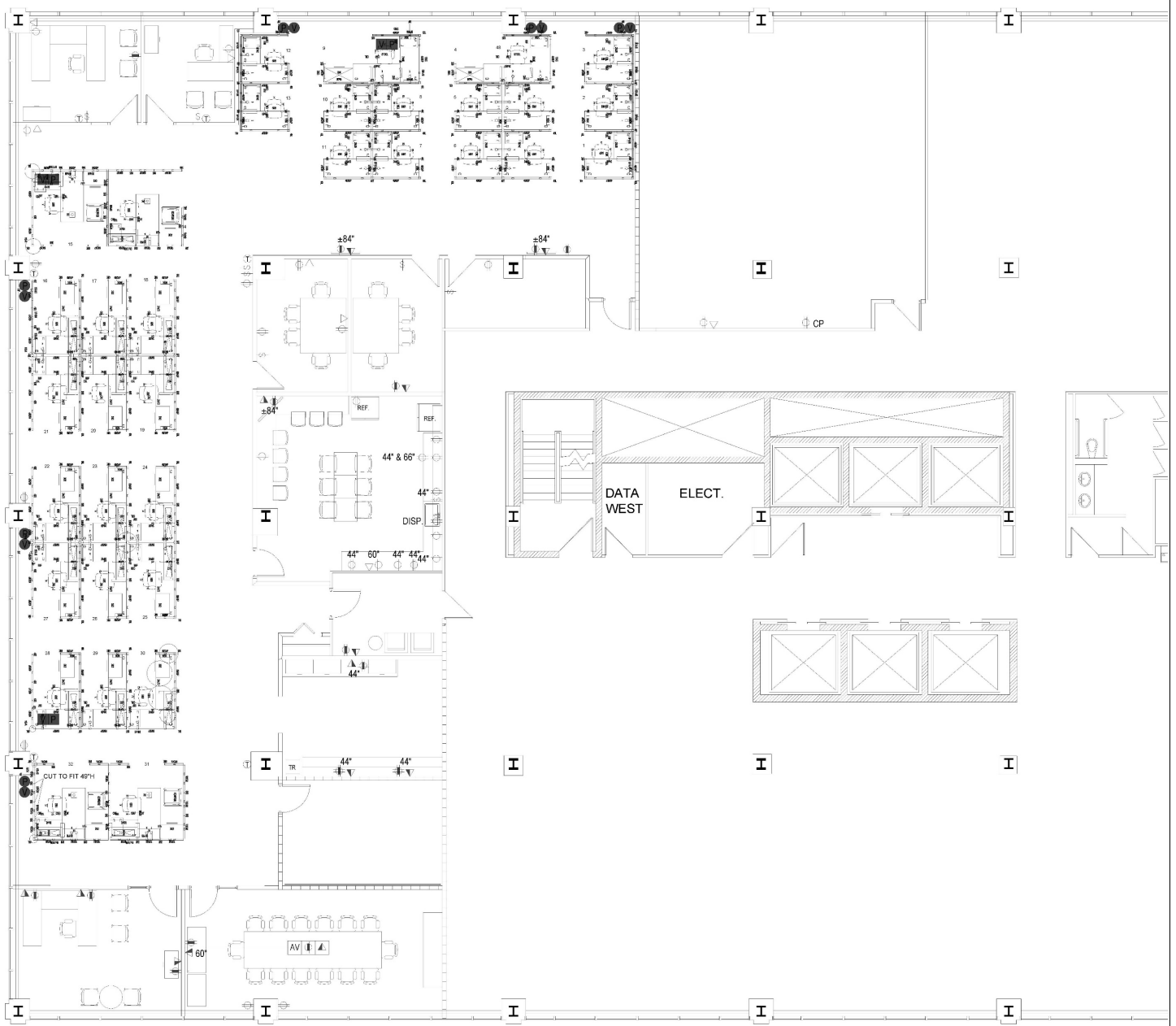
AERIAL/LOCATION MAP



Travelers Tower I

26555 Evergreen Road, Suite 650, Southfield, MI 48076

6,701 SF



Brian Piergentili
Executive Director
+1 248 358 6103
brian.piergentili@cushwake.com

27777 Franklin Road, Suite 1050
Southfield, Michigan
Main +1 248 358 6100
cushmanwakefield.com