

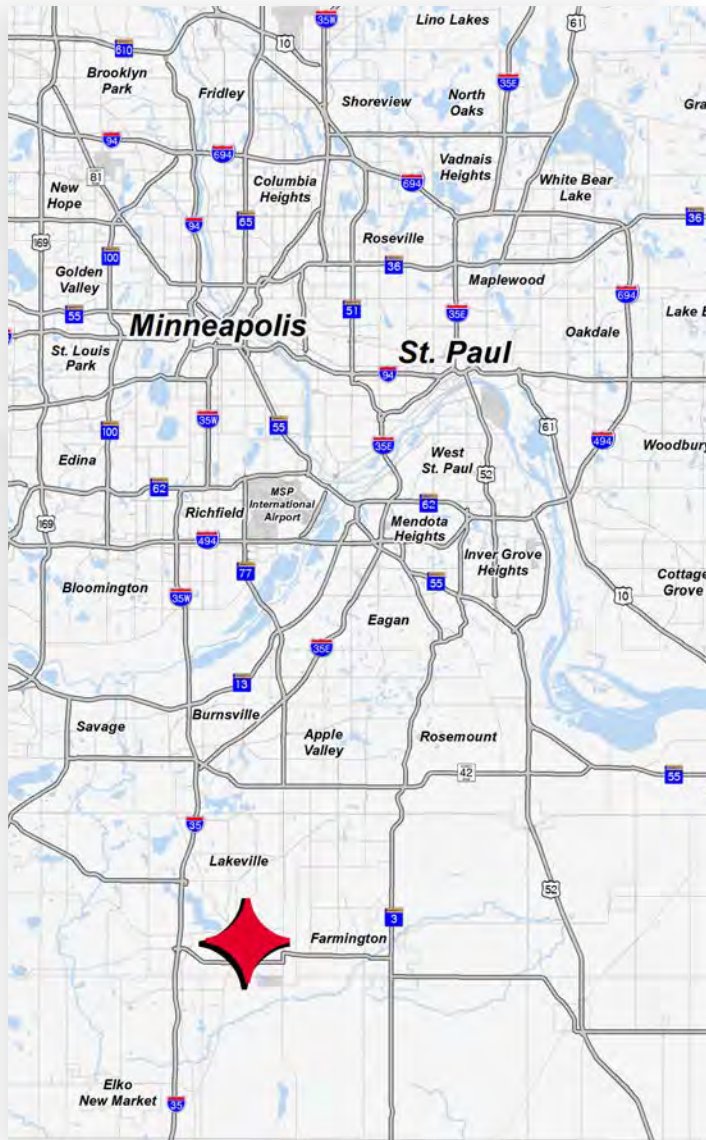
FOR SUBLEASE  
22,638 SF

8860

207TH STREET WEST  
LAKEVILLE, MN

 CUSHMAN &  
WAKEFIELD

# Property Information

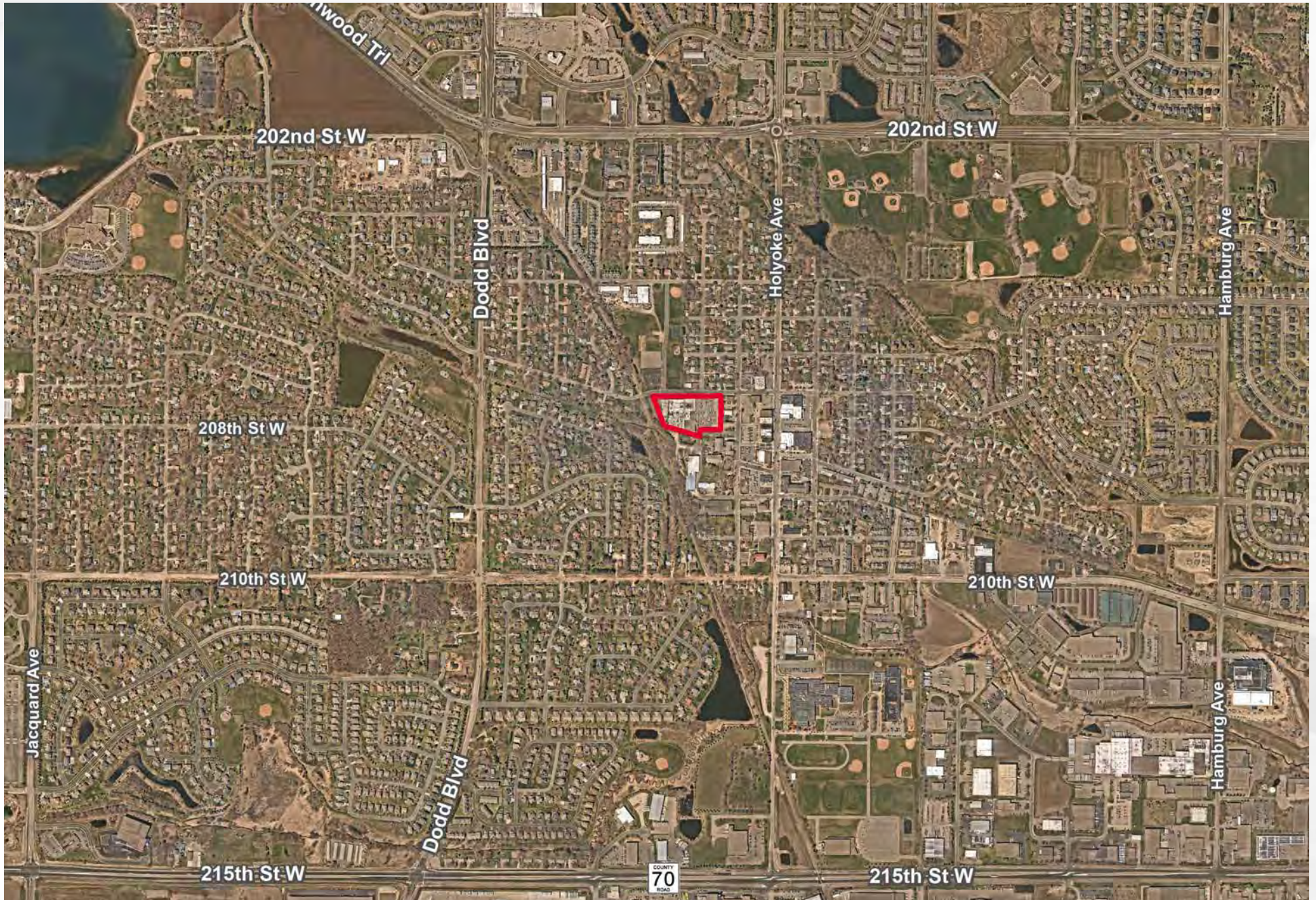


<b>ADDRESS</b>	8860 207th St W Lakeville, MN 55044
<b>BUILDING SIZE</b>	130,000 SF
<b>SQUARE FOOTAGE AVAILABLE</b>	22,638 SF
<b>YEAR BUILT</b>	1958
<b>CLEAR HEIGHT</b>	20'
<b>LOADING</b>	2 Drive-ins (14' High)
<b>USE</b>	Warehouse Storage
<b>RATE</b>	Negotiable

# Property Aerial



# Property Aerial



# Property Photos





**WE** MAKE REAL EXPERIENCE COUNT

## Contact

### **CHARLIE MERWIN**

Senior Director  
+1 612 347 9346  
[charlie.merwin@cushwake.com](mailto:charlie.merwin@cushwake.com)

### **CLINT MOE**

Associate  
+1 952 221 1380  
[clint.moe@cushwake.com](mailto:clint.moe@cushwake.com)