

2301 & 2401 WEST BIG BEAVER RD
SOMERSET PLACE
TROY, MICHIGAN



Under New Ownership





THE OPPORTUNITY

Recently acquired by A.F. Jonna, Somerset Place is set to undergo a complete redevelopment featuring new Class A amenities, onsite retail, new lobbies, upgraded common areas, and more. Comprised of two buildings, Somerset Place offers Class A premium office space, ideal for businesses looking to establish or expand their presence in this vibrant commercial hub.

- Up to 300,000 SF available
- 21,062 and 23,448 SF floor plates
- Future onsite Retail and Class A amenities
- Building Signage
- Access and proximity to Somerset Inn
- Onsite deck parking

Troy's Golden Corridor is renowned for its thriving business community, and this opportunity is within walking distance to upscale shopping, diverse dining options, high-end hotel accommodations, and a plethora of entertainment options, just to name a few.



SOMERSET
COLLECTION

BANK OF AMERICA

DICKINSON WRIGHT



JPMORGAN
CHASE & CO.

MR. KABOB
GRILLE & CATERING

Eddie V's
PRIME SEAFOOD

DIAMONDS DIRECT

Mercantile Bank

2401
W. BIG BEAVER RD

2301
W. BIG BEAVER RD

W BIG BEAVER ROAD

Flagstar
Bank

Title

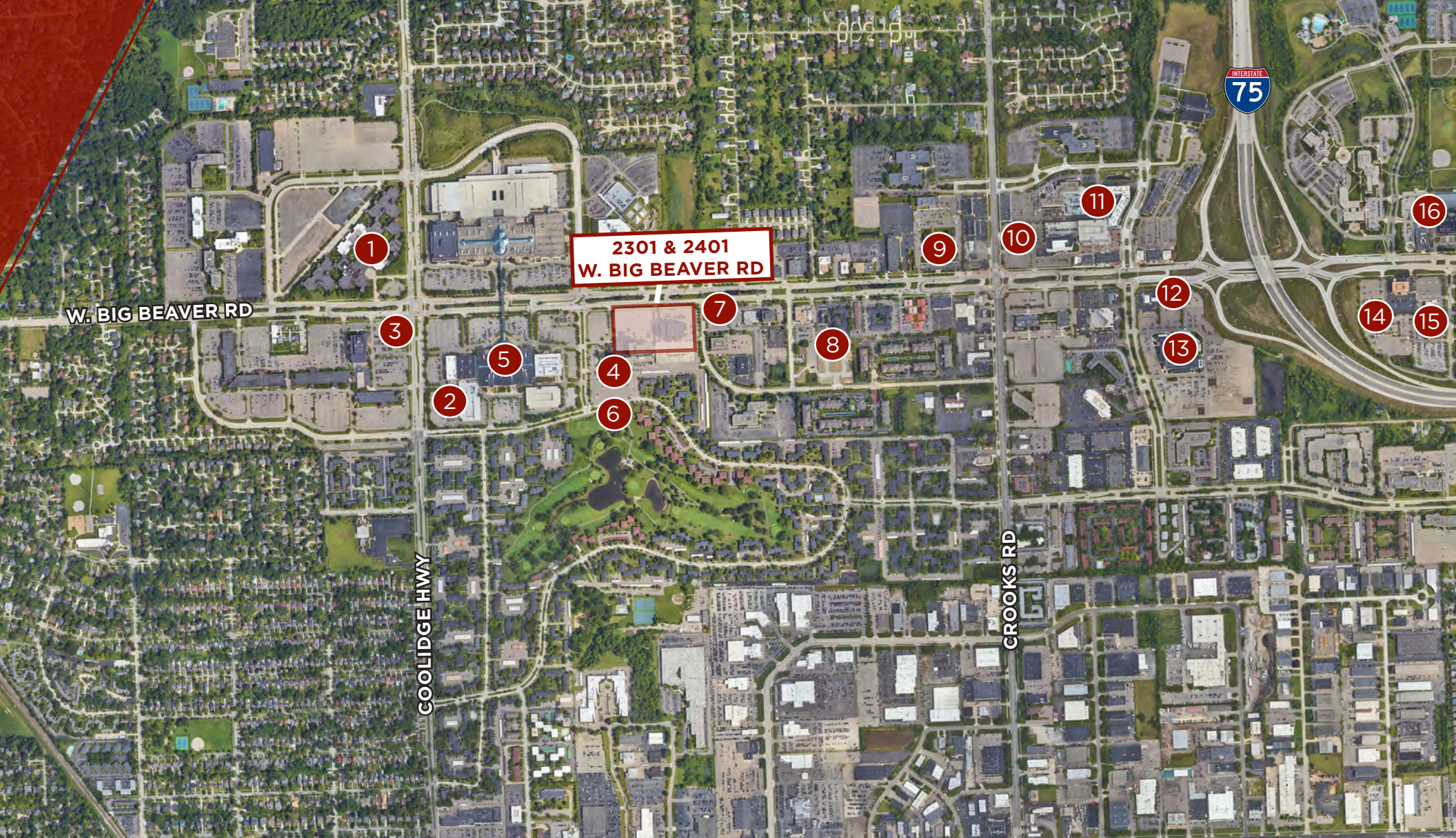


SOMERSET
GOLF CLUB

GOLF VIEW DRIVE

Regents Club

TROY'S GOLDEN CORRIDOR



2301 & 2401
W. BIG BEAVER RD

LIVE WORK PLAY


- 1. FORBES/ U OF M REDEVELOPMENT
- 2. DRAFT KINGS SPORTS & SOCIAL
- 3. OCEAN PRIME
- 4. SOMERSET INN
- 5. SOMERSET COLLECTION
- 6. SOMERSET GOLF CLUB
- 7. MAGGIANO'S LITTLE ITALY

- 8. BENIHANA
- 9. PAPA ROMANO'S
- 10. SEASON'S 52
- 11. HILTON GARDEN INN
- 12. GRANITE CITY
- 13. RUTH'S CHRIS STEAKHOUSE
- 14. DRURY INN

- 15. FOGO DE CHAO BRAZILIAN STEAKHOUSE
- 16. DETROIT MARRIOTT OF TROY

2301 W. Big Beaver Rd
192,564 SF

● LEASED
○ AVAILABLE

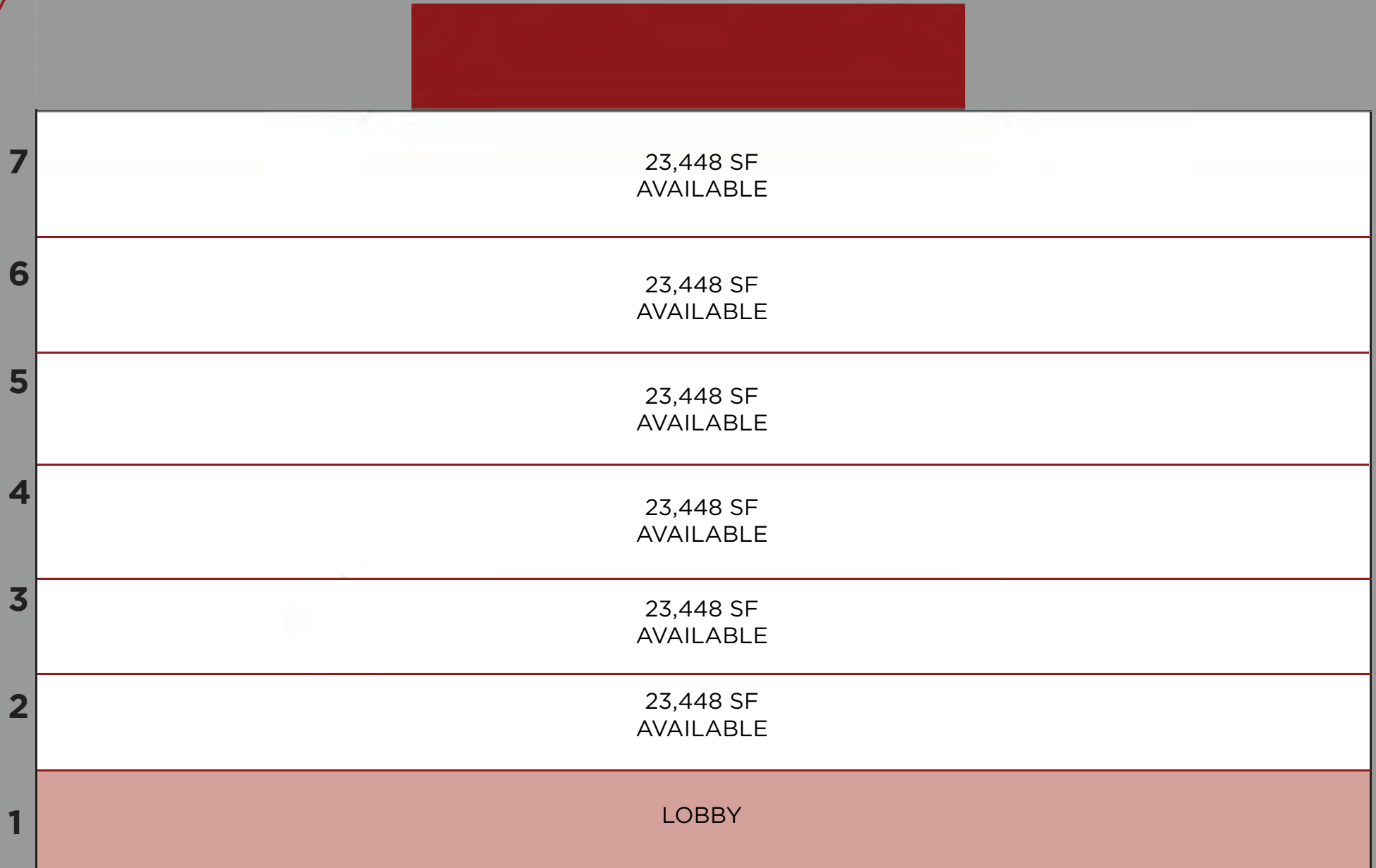


9	5,087 SF AVAILABLE		
8			
7	21,062 SF AVAILABLE		
6	21,062 SF AVAILABLE		
5	21,062 SF AVAILABLE		
4	21,062 SF AVAILABLE		
3	2,913 SF AVAILABLE	3,727 SF AVAILABLE	2,686 SF AVAILABLE
2	21,062 SF AVAILABLE		
1	FUTURE AMENITIES	10,531 SF AVAILABLE	

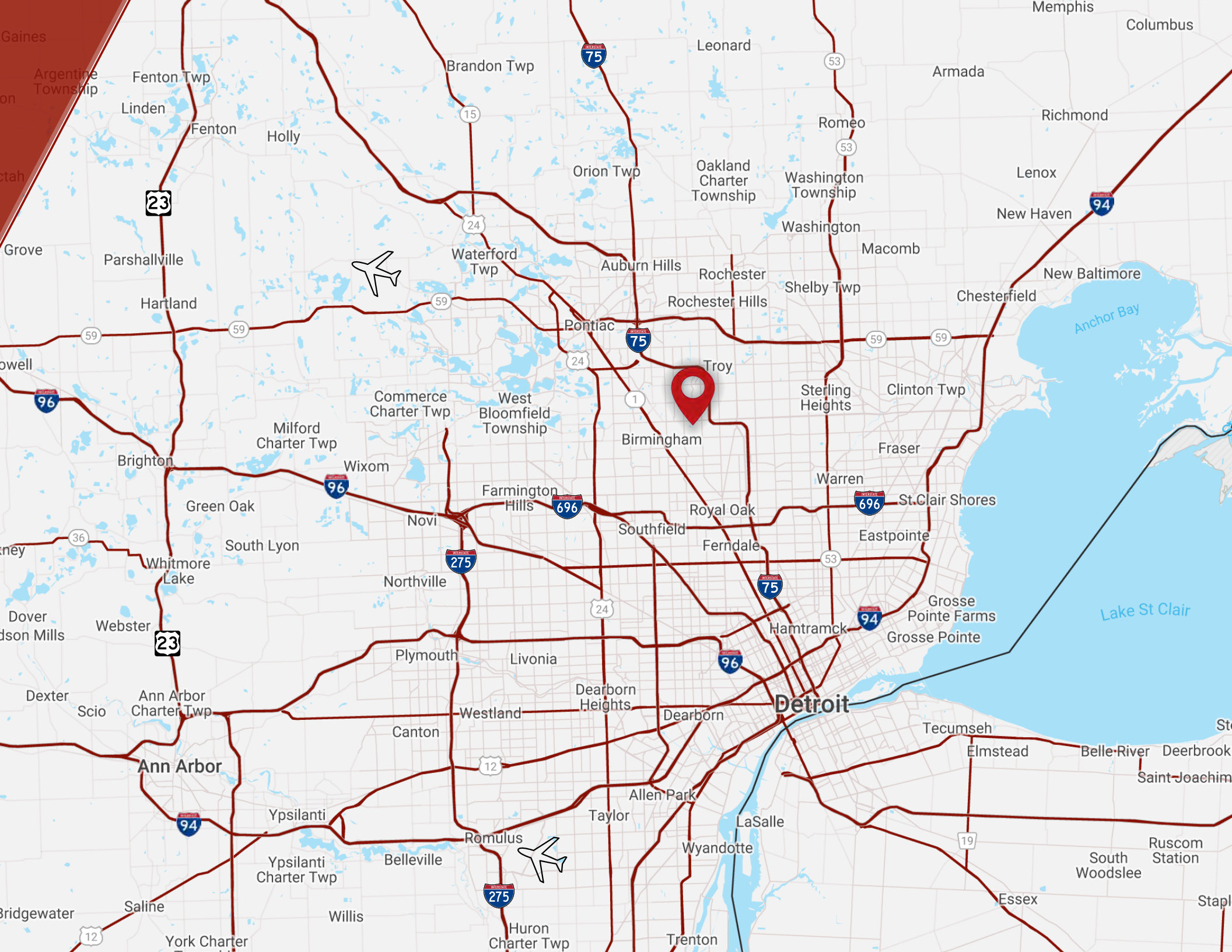
STACKING PLAN I

2401 W. Big Beaver Rd
163,866 SF

● LEASED
○ AVAILABLE



STACKING PLAN II





CONTACT:

GARRETT KEAIS

Executive Managing Director

+1 248 358 6112

garrett.keais@cushwake.com

JOHN VANNOORD

Senior Associate

+1 248 358 6106

john.vannoord@cushwake.com

