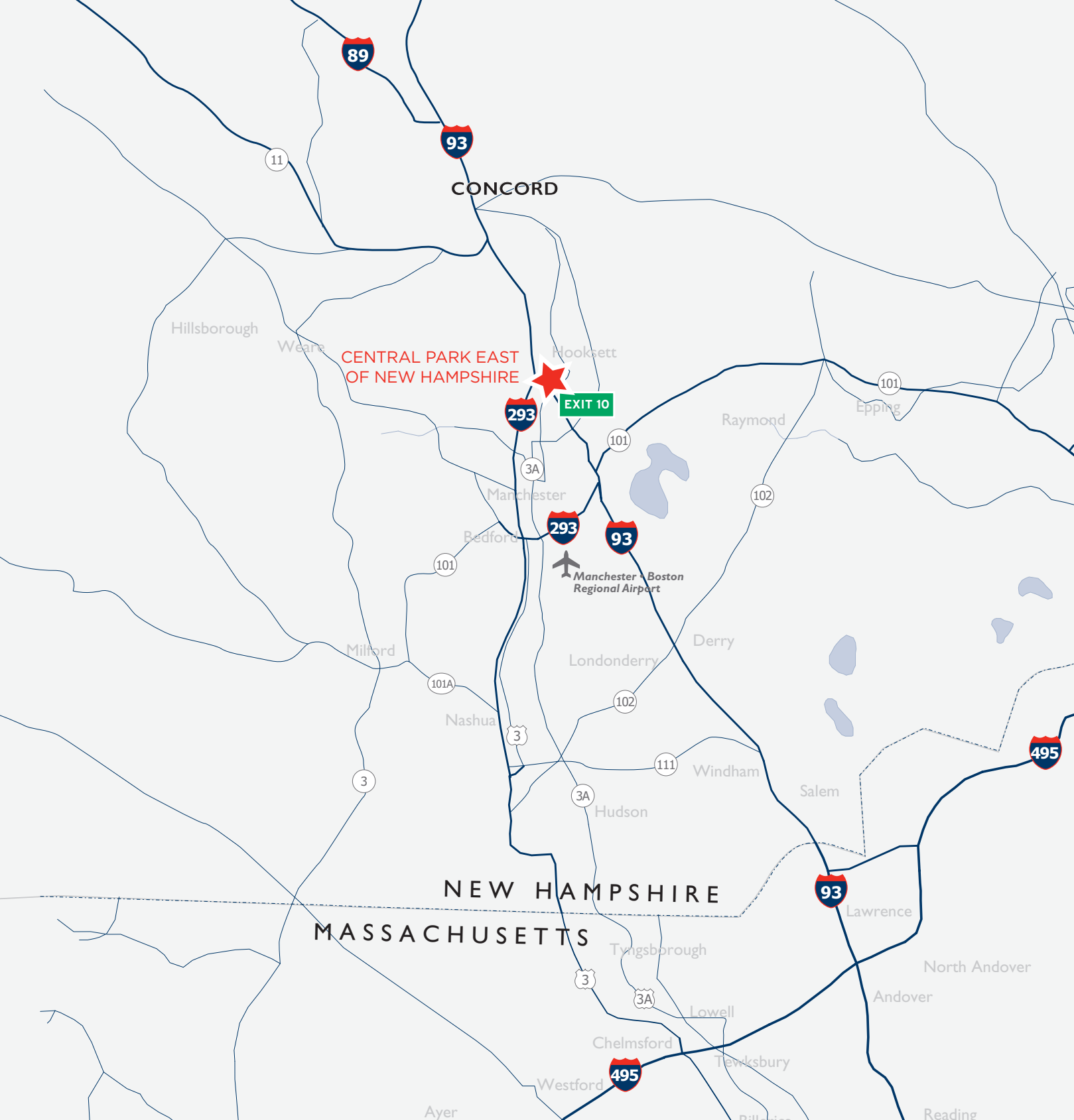


CENTRAL PARK EAST OF NEW HAMPSHIRE

Hooksett, New Hampshire

**ECONOMIC
REVITALIZATION
ZONE**

TAX CREDITS
AVAILABLE



Thomas Farrelly, SIOR
Executive Managing Director
thomas.farrelly@cushwake.com

Denis C.J. Dancoes II
Executive Director
denis.dancoes@cushwake.com

Sue Ann Johnson
Managing Director
sueann.johnson@cushwake.com

Cushman & Wakefield
of New Hampshire, Inc.
900 Elm Street, Suite 1301
Manchester, NH 03101
(603) 628-2800
cushmanwakefield.com

64 ACRES FOR SALE | LEASE | BUILD-TO-SUIT

©2023 Cushman & Wakefield. All rights reserved. The information contained in this communication is strictly confidential. This information has been obtained from sources believed to be reliable but has not been verified. NO WARRANTY OR REPRESENTATION, EXPRESS OR IMPLIED, IS MADE AS TO THE CONDITION OF THE PROPERTY (OR PROPERTIES) REFERENCED HEREIN OR AS TO THE ACCURACY OR COMPLETENESS OF THE INFORMATION CONTAINED HEREIN, AND SAME IS SUBMITTED SUBJECT TO ERRORS, OMISSIONS, CHANGE OF PRICE, RENTAL OR OTHER CONDITIONS, WITHDRAWAL WITHOUT NOTICE, AND TO ANY SPECIAL LISTING CONDITIONS IMPOSED BY THE PROPERTY OWNER(S). ANY PROJECTIONS, OPINIONS OR ESTIMATES ARE SUBJECT TO UNCERTAINTY AND DO NOT SIGNIFY CURRENT OR FUTURE PROPERTY PERFORMANCE.



CENTRAL PARK EAST OF NEW HAMPSHIRE

Hooksett, New Hampshire

64 ACRES

CENTRAL PARK EAST OF NEW HAMPSHIRE

Hooksett, New Hampshire

Central Park East is a premier development site located at the convergence of I-93 and I-293 in a highly populated retail area on an elevated parcel in Hooksett, New Hampshire. With a high daily traffic count, clear signage visibility and ample parking, the commercially zoned land is ideal for retail, office or industrial opportunities.

Central Park East is located off Exit 10 of I-93 at its intersection with I-293 and near Route 3A, offering easy accessibility from a variety of directions. Nearby retail includes Walmart, Market Basket, Bass Pro Shops, Target, Home Depot, Regal Cinemas, Kohl's and Petco. The property's attractive location makes Central Park East a highly desirable opportunity.

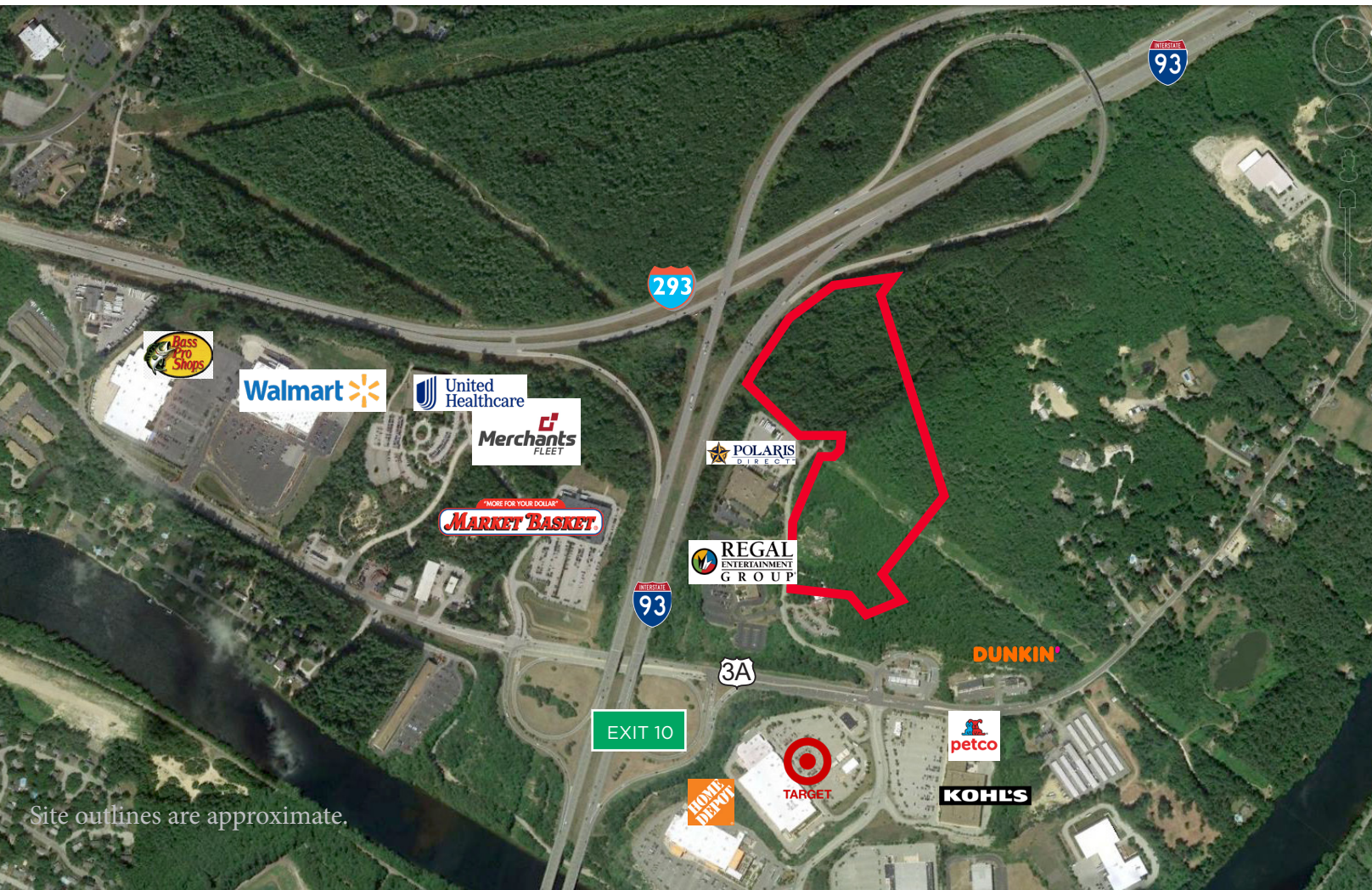
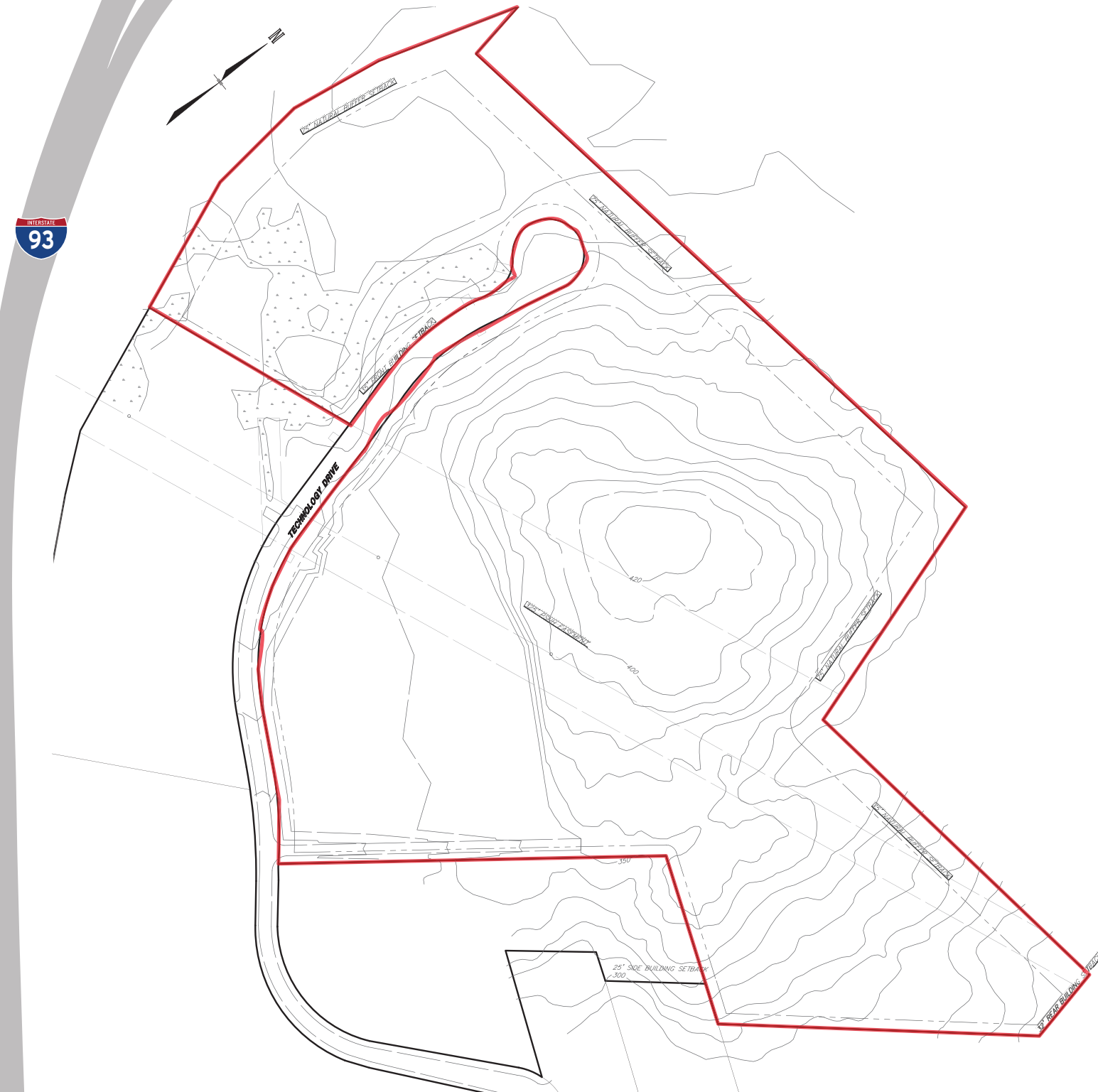
PROPERTY FEATURES

- Prime retail, industrial or office development site
- Highway visibility offers strong branding opportunities
- Located in an Economic Revitalization Zone with tax credits available
- Located in a highly desirable area with numerous retail sites, restaurants, hotels and gas stations immediately nearby
- Easily accessible from I-93, I-293 and Routes 101 and 3A

SPECIFICATIONS	
SITE SIZE	64 acres (divisible)
ZONING	Commercial (CI)
UTILITIES	Water: Municipal Sewer: Septic Electricity: Eversource Energy Natural Gas: Liberty Utilities Cable: Comcast
HIGHWAY ACCESS	I-93 (Exit 10), I-293, Route 3A
TRAFFIC COUNT	76,000 AADT

CURRENT DEMOGRAPHICS			
	POPULATION	AVERAGE HOUSEHOLD INCOME	MEDIAN AGE
3 MILES	31,204	\$99,304	40.9
5 MILES	108,015	\$82,045	38.2
10 MILES	203,309	\$96,631	40.4

SITE PLAN



64 ACRES

Site outlines are approximate.