

MULBERRY COMMERCIAL PARK**4
MONTHS
FREE*****INDUSTRIAL/FLEX SPACE FOR LEASE OR SALE**

Unit 30 is an open finished office/warehouse space with upgraded power, heated warehouse space and private restroom.

Unit 31 contains a commercial kitchen space offering Type 1 hood, grease trap, 3 compartment sink, 2 walk-in coolers, 1 walk-in freezer and 3-phase power.

Both units are sprinklered. This commercial complex provides easy access to I-25 and is professionally managed by Mountain & Plains Property Management. The association dues include water, sewer, trash, maintenance and snow removal.

Unit 30:	2,400 SF
Sale Price:	\$535,000 (\$223/SF)
Lease Rate:	\$14.00/SF NNN (\$6.94/SF)

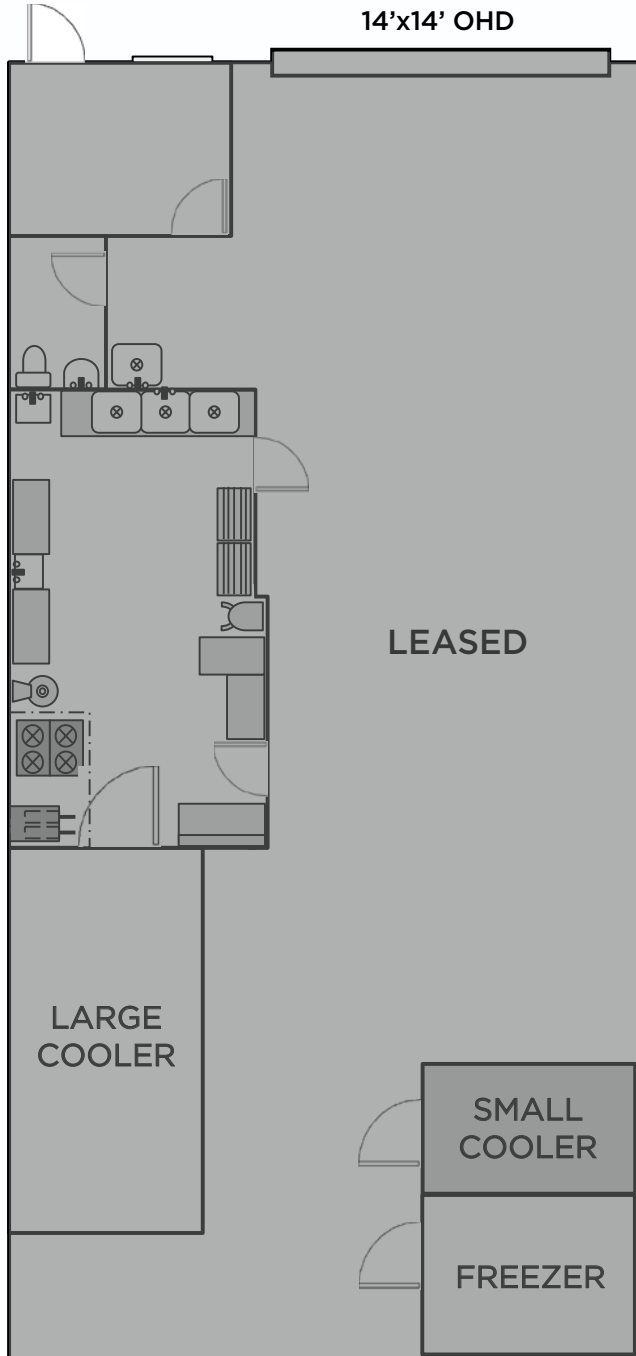
Unit 31:	2,400 SF
Sale Price:	\$552,000 (\$230/SF)
Lease Rate:	Leased

Clear Height:	17'-20'
YOC:	1999
Loading:	14'x14' OHD per unit

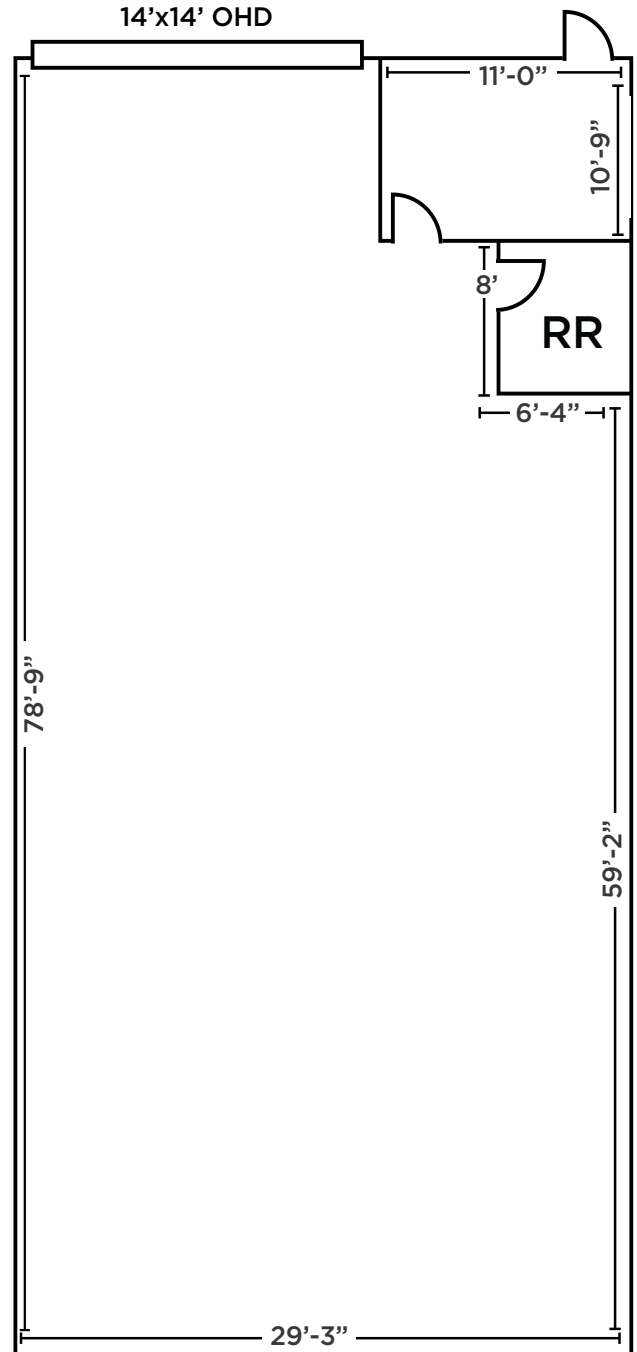
**For a lease signed before December 31, 2024*

FLOOR PLAN

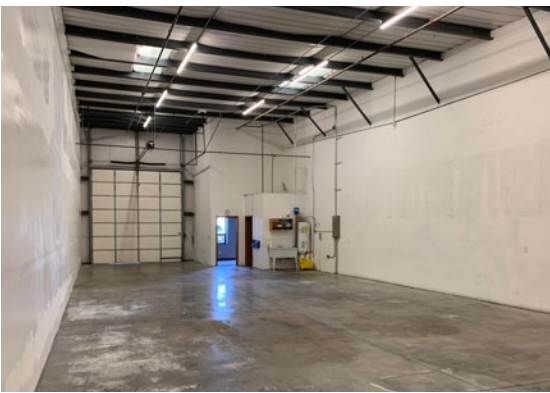
UNIT 31 | LEASED



UNIT 30



PROPERTY PHOTOS





INDUSTRIAL FLEX SPACE FOR LEASE OR SALE

2649 EAST MULBERRY STREET

UNIT 30 & 31 | FORT COLLINS, COLORADO 80524



For more information, please contact:

JASON ELLS, CCIM
 Senior Director
 +1 970 231 7513
 jason.ells@cushwake.com

772 Whalers Way, Suite 200
 Fort Collins, Colorado 80525

T +1 970 776 3900
 F +1 970 267 7419

cushmanwakefield.com

© 2024 Cushman & Wakefield. All rights reserved. The information contained in this communication is strictly confidential. This information has been obtained from sources believed to be reliable but has not been verified. NO WARRANTY OR REPRESENTATION, EXPRESS OR IMPLIED, IS MADE AS TO THE CONDITION OF THE PROPERTY (OR PROPERTIES) REFERENCED HEREIN OR AS TO THE ACCURACY OR COMPLETENESS OF THE INFORMATION CONTAINED HEREIN, AND SAME IS SUBMITTED SUBJECT TO ERRORS, OMISSIONS, CHANGE OF PRICE, RENTAL OR OTHER CONDITIONS, WITHDRAWAL WITHOUT NOTICE, AND TO ANY SPECIAL LISTING CONDITIONS IMPOSED BY THE PROPERTY OWNER(S). ANY PROJECTIONS, OPINIONS OR ESTIMATES ARE SUBJECT TO UNCERTAINTY AND DO NOT SIGNIFY CURRENT OR FUTURE PROPERTY PERFORMANCE.