



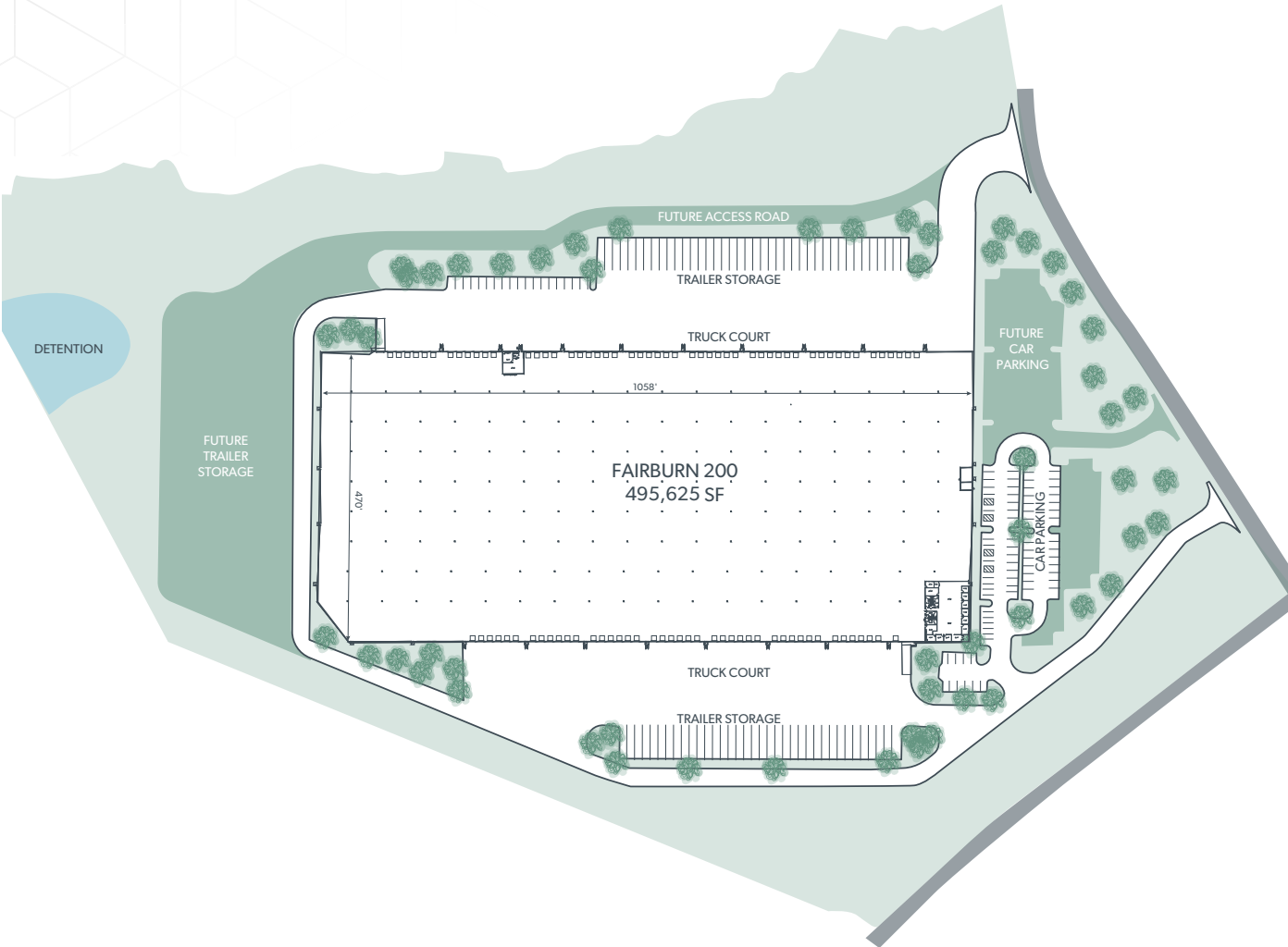
2000 LOGISTICS CENTER



495,625 SF CLASS A INDUSTRIAL SPACE FOR LEASE



PROPERTY HIGHLIGHTS



Docks: 97 ext



Drive Ins: 2 tot./12' w x 14' h



Cross Docks: Yes



Levelers: 50



Construction: Steel



Truck Court: 190'



Clear Height: 36'



Columns: 56'w x 65'd



Floor Load / Thickness: 4,000 lbs/SF' | 7"



114 Auto Spaces (Expandable)



99 Trailer Storage Spots



Sprinklers: ESFR



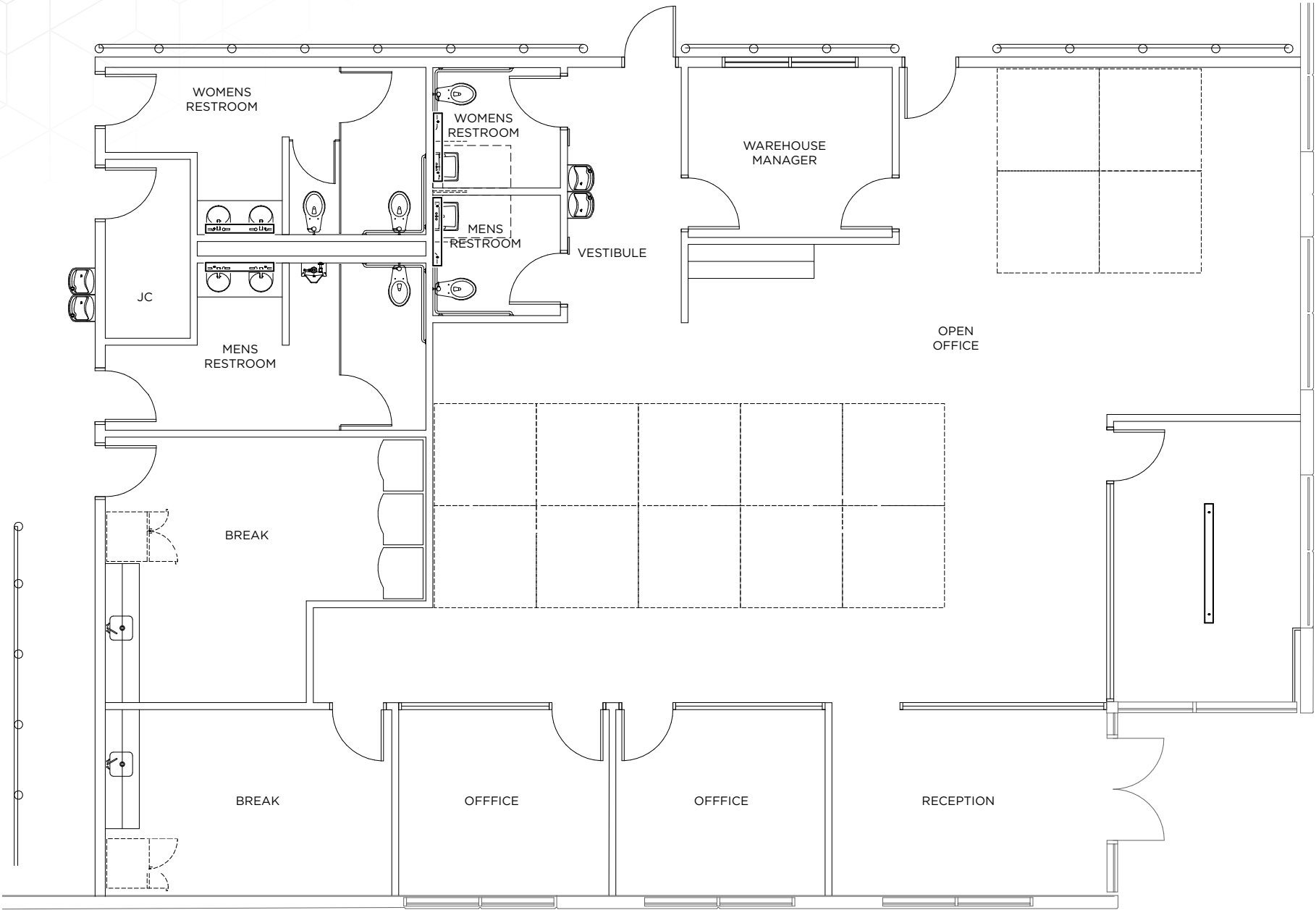
Power: 277/480v, 3-phase



Utilities: Heating - Gas

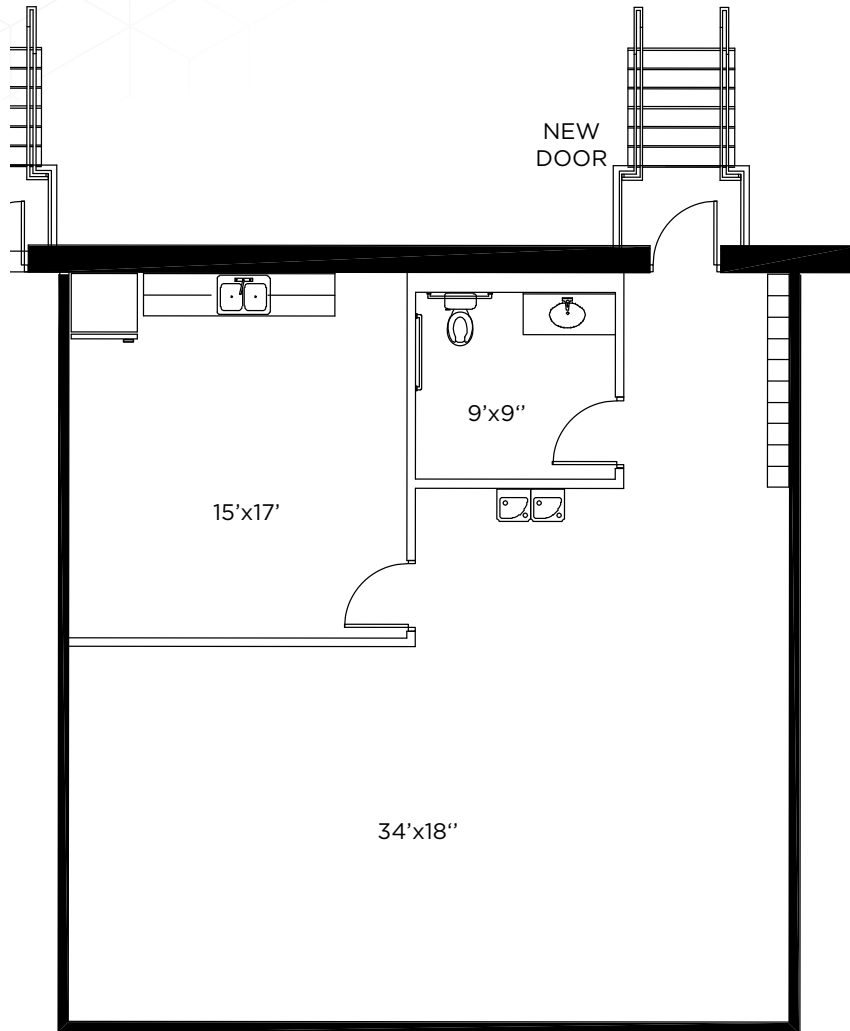
EXISTING OFFICE PLAN

3,488 SF



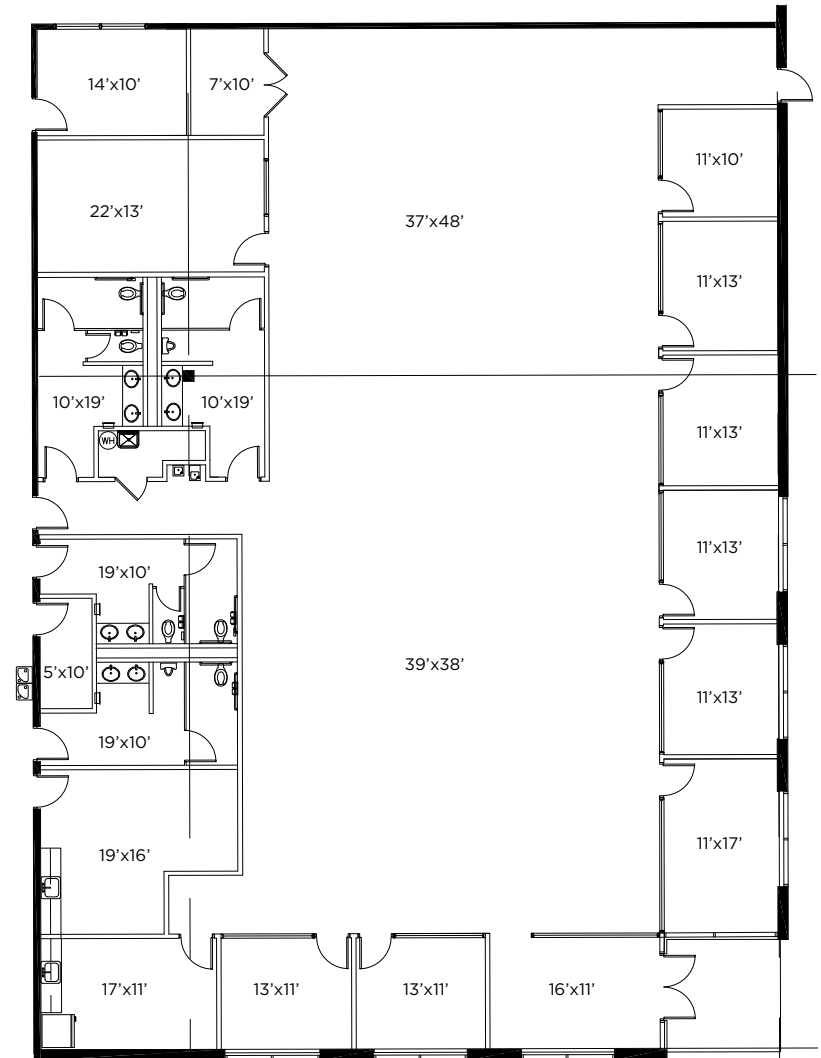
PROPOSED EXPANDED OFFICE PLAN

Proposed Trucker's Office



TRUCKERS LOUNGE 1,197 SQ.FT.

Proposed Office Expansion



6,693 SF

AERIAL

CLICK HERE FOR
INTERACTIVE
360°
TOUR

99 TRAILER SPACES

48 DOCK DOORS
(25 WITH LEVELERS)

49 DOCK DOORS
(25 WITH LEVELERS)

190' TRUCK COURT

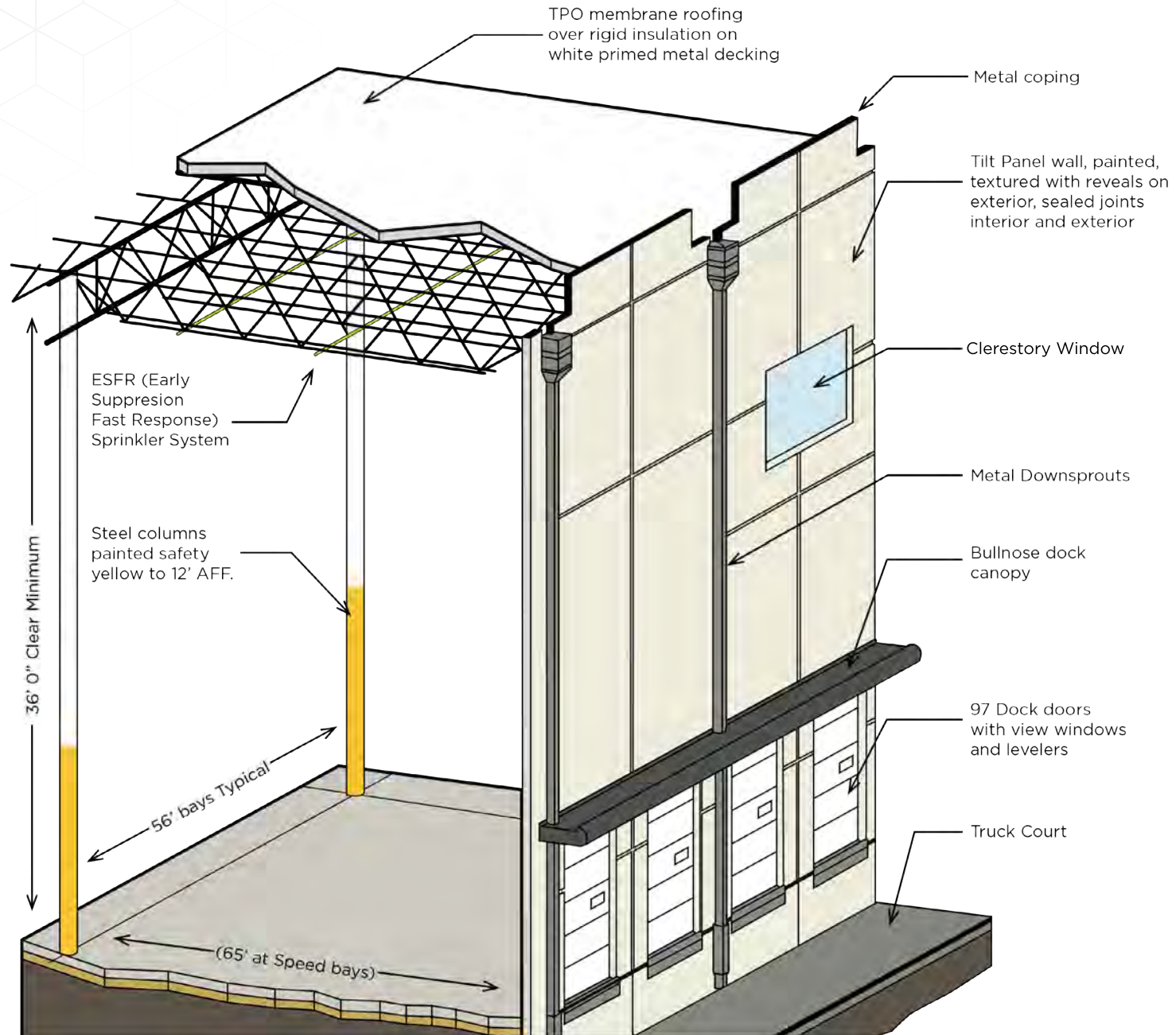
190' CONCRETE
TRUCK COURT

3,488 SF OFFICE

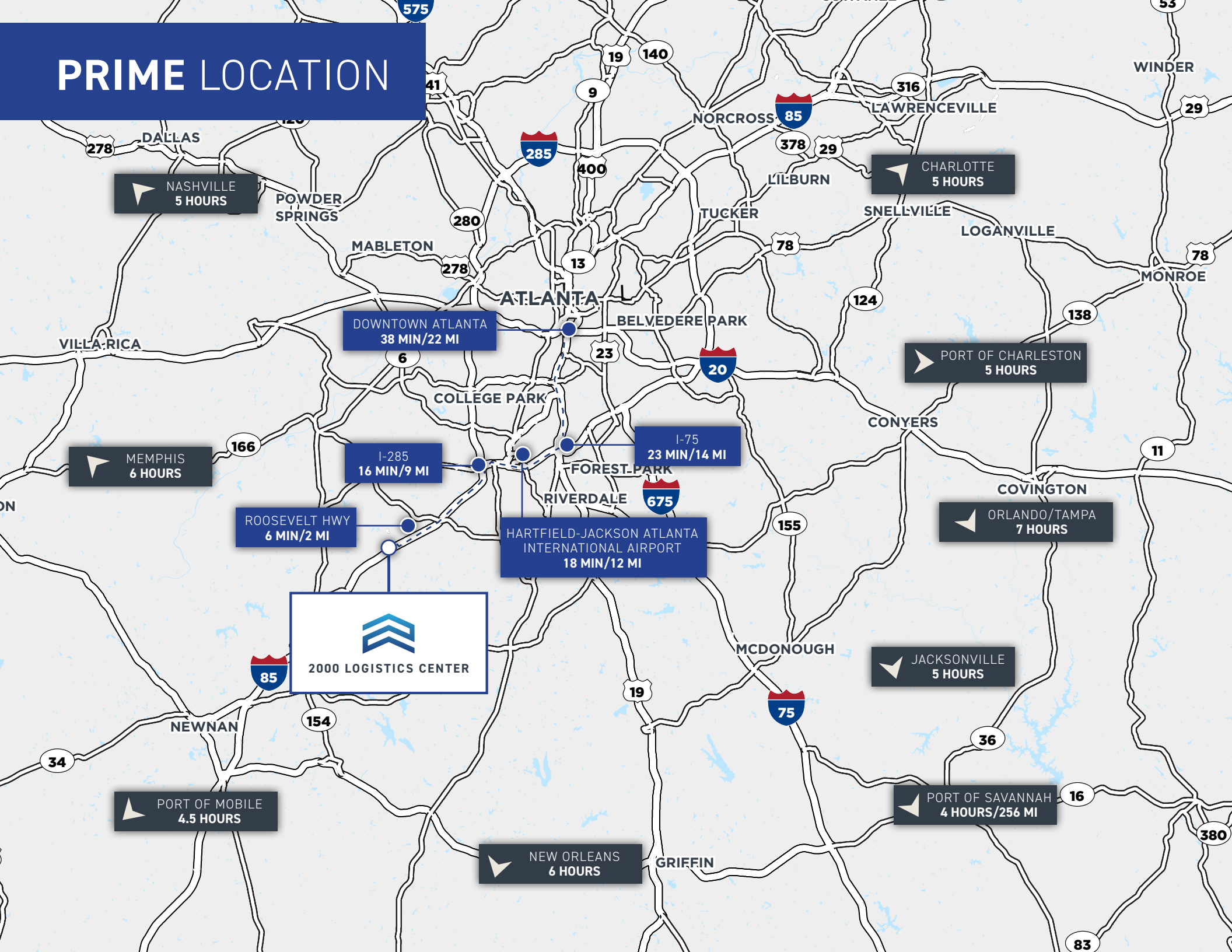
114 AUTO SPACES
(EXPANDABLE)



BUILDING CROSS SECTION



PRIME LOCATION



STRONG LABOR FORCE

134,524

Warehouse Employees

\$72,356

Med HH Income

5.2%

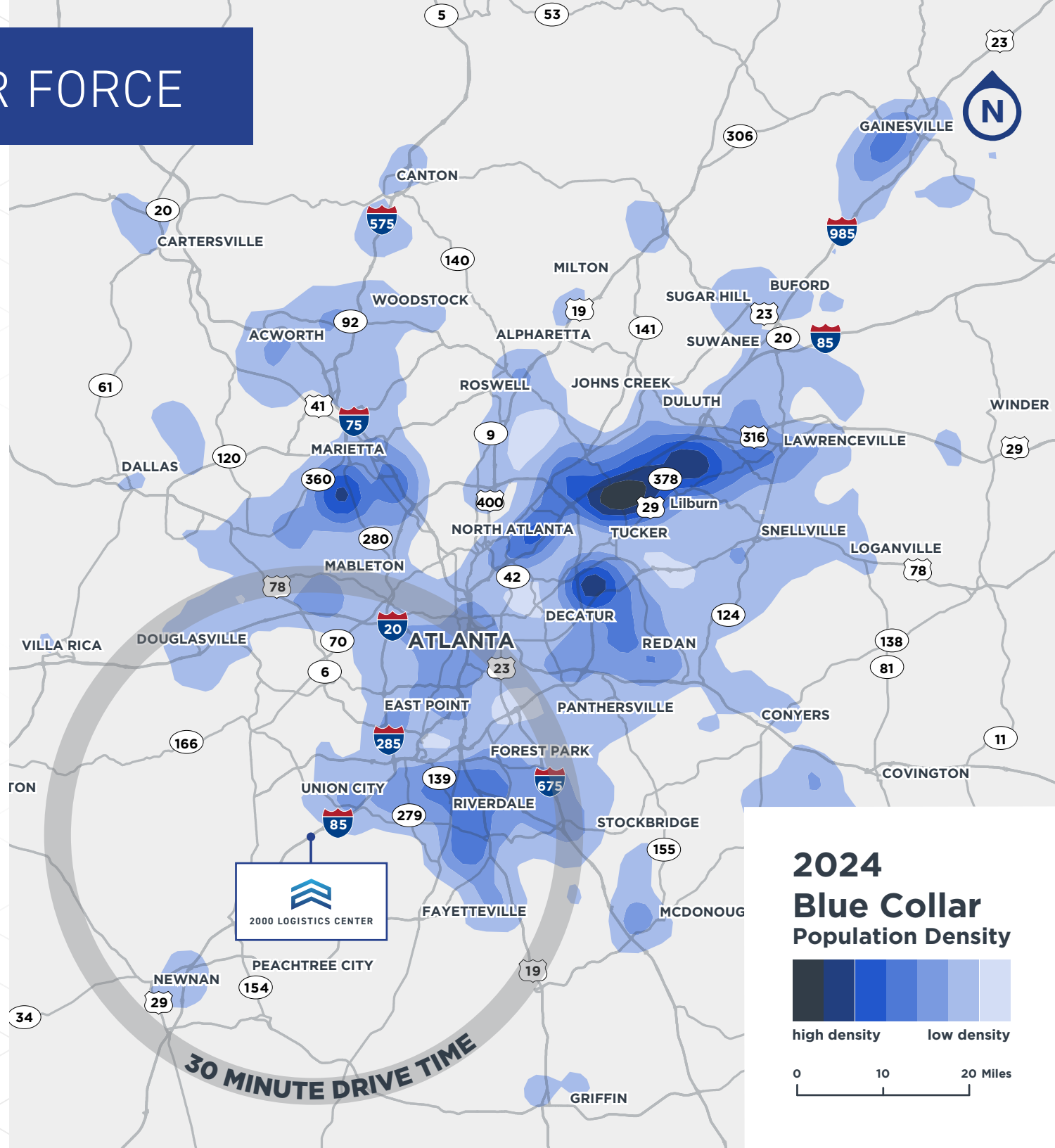
Unemployment Rate

28.1%

High School Educated

45.7%

College Educated



INDUSTRIAL NEIGHBORS




2000 LOGISTICS CENTER

USPS.COM

drive

ENORMIZE WHOLESALE

LOWE'S

J.B. HUNT

syncreon

PVH

OWENS CORNING

USPS.COM

syncreon

GP Georgia-Pacific

OWENS CORNING

CJ LOGISTICS

NEFAB

DURACELL

freshpoint

SC Johnson

XPO Logistics

CLOROX

85

Senolia Rd

DHL

Nestle PURINA

Aaron's

Giti A

KENCO

amazon.com

amazon.com

CJ LOGISTICS

GA BUSINESS

Fayetteville Rd

Oakley Industrial Blvd

Spence Rd

Milam Rd

Bohannon Rd

GA-74 S GA-74 N

Union City

Roosevelt Hwy

W Broad St

Fairburn

Virline Smith Rd

Rivertown Rd

White Mill Rd

KRAFT

P&G

amazon.com

Menlo

DHL

MAERSK

GXO

GEODIS

Lester Rd

GA-92

Rivers Rd

Lees Mill Rd

Veterans Pkwy

Burrington Rd

Peters Rd

Royal South Pkwy

Flat Shoals Rd



Feldwood Rd

A LOOK INSIDE

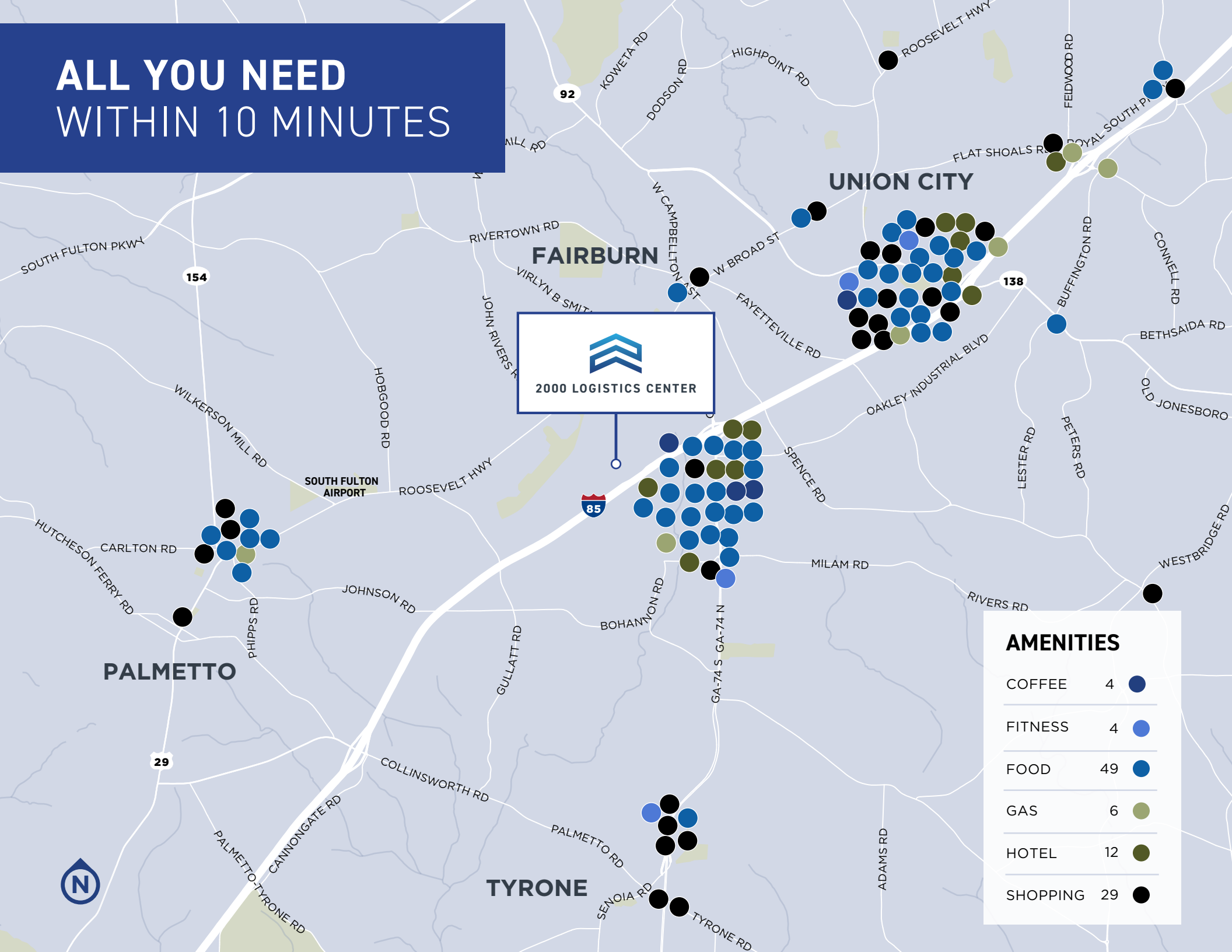


ALL YOU NEED WITHIN 10 MINUTES



AMENITIES

COFFEE	4	
FITNESS	4	
FOOD	49	
GAS	6	
HOTEL	12	
SHOPPING	29	





2000 LOGISTICS CENTER

FOR MORE INFORMATION, PLEASE CONTACT:

LISA B. PITTMAN, SIOR

Executive Director

+1 404 309 5309

lisa.pittman@cushwake.com

PAT MURPHY

Managing Director

+1 770 853 8796

pat.murphy@cushwake.com

ANDREW THURMAN

Senior Associate

+1 404 682 3429

andrew.thurman@cushwake.com

