



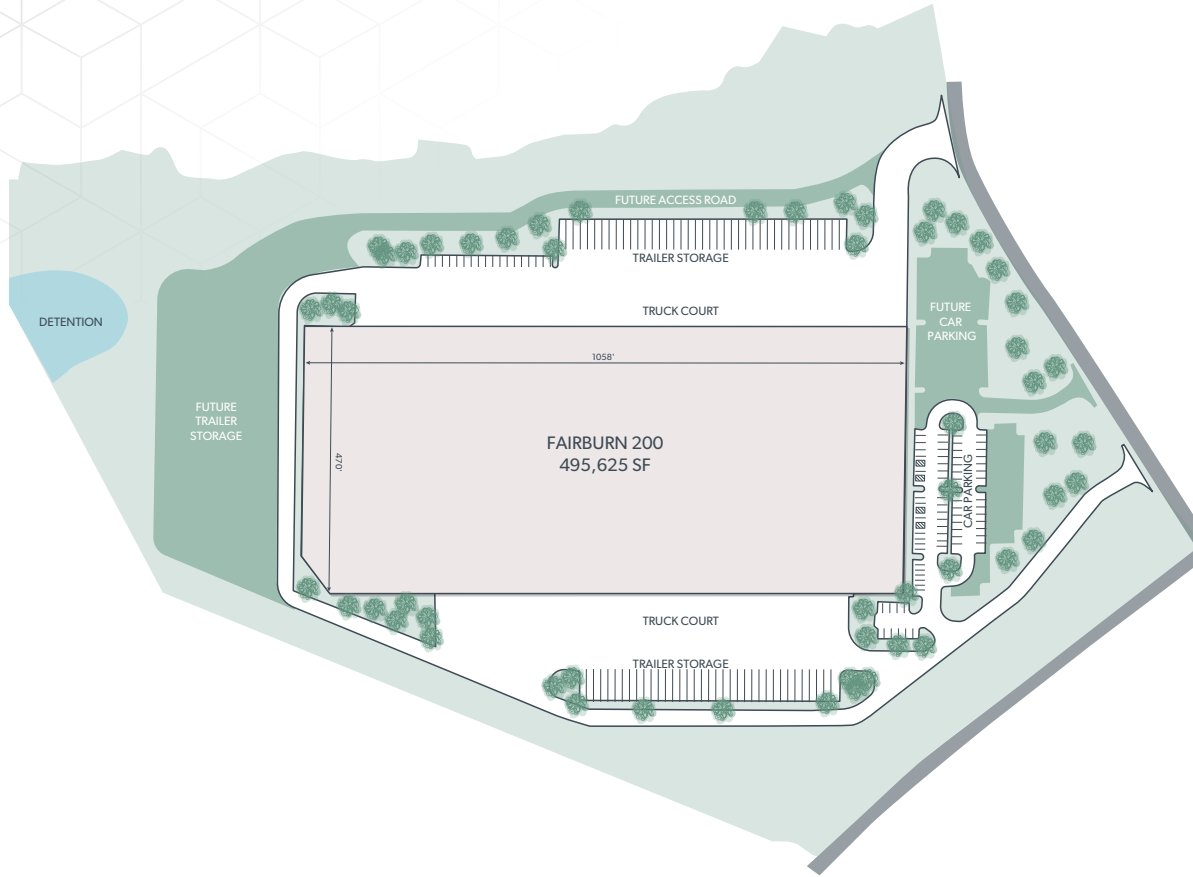
## 2000 LOGISTICS CENTER



**495,625 SF CLASS A INDUSTRIAL SPACE FOR LEASE**



# PROPERTY HIGHLIGHTS



**Docks: 97 ext**



**Drive Ins: 2 tot./12' w x 14' h**



**Cross Docks: Yes**



**Levelers: 50**



**Construction: Steel**



**Truck Court: 190'**



**Clear Height: 36'**



**Columns: 56'w x 65'd**



**Floor Load: 4,000 lbs/SF`**



**Floor Thickness: 7"**



**Power: 2,000a/ Heavy**

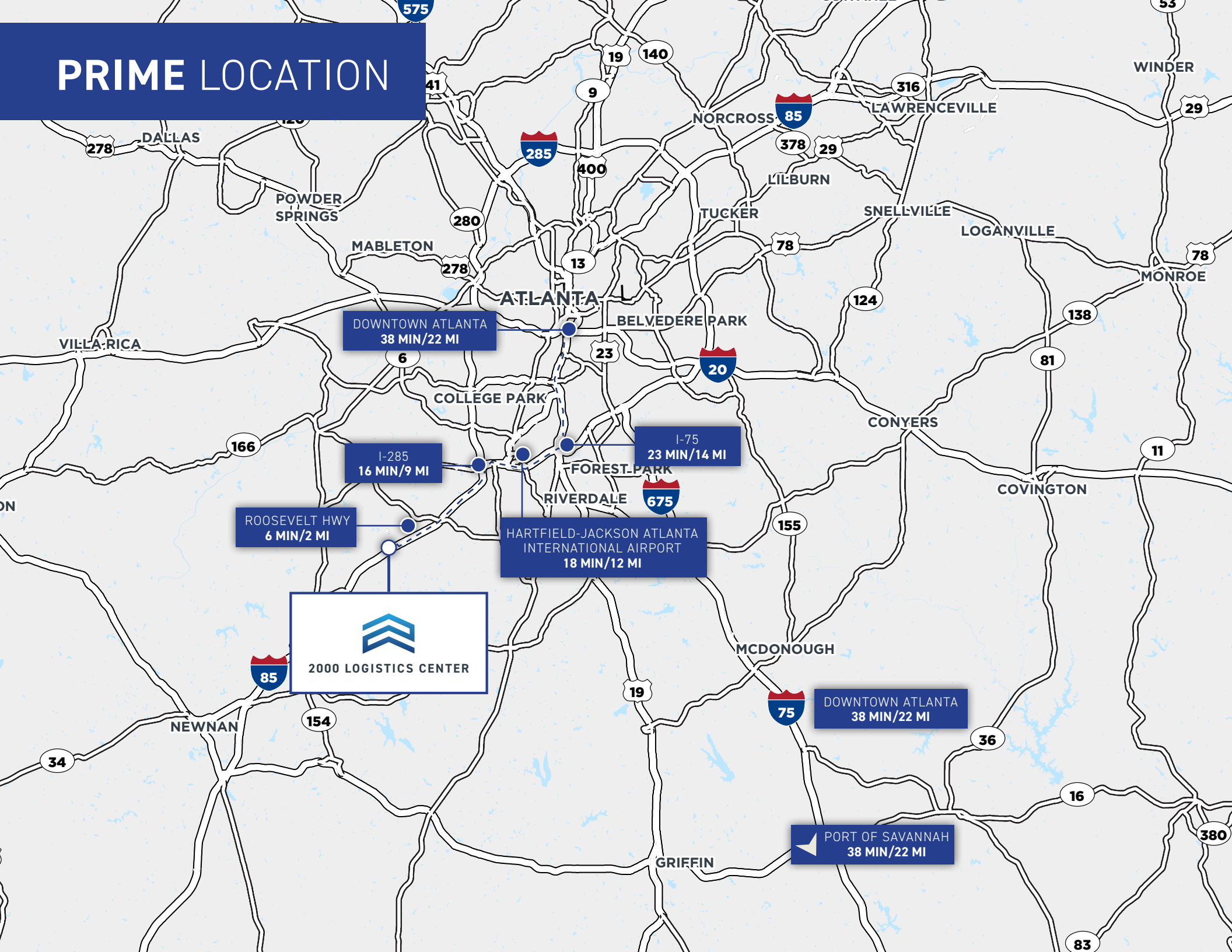


**Sprinklers: ESFR**



**Utilities: Heating - Gas**

# PRIME LOCATION



2000 LOGISTICS CENTER

DOWNTOWN ATLANTA  
38 MIN/22 MI

I-285  
16 MIN/9 MI

ROOSEVELT HWY  
6 MIN/2 MI

HARTFIELD-JACKSON ATLANTA  
INTERNATIONAL AIRPORT  
18 MIN/12 MI

I-75  
23 MIN/14 MI

DOWNTOWN ATLANTA  
38 MIN/22 MI

PORT OF SAVANNAH  
38 MIN/22 MI

# STRONG LABOR FORCE

**134,524**

Warehouse Employees

**\$72,356**

Med HH Income

**5.2%**

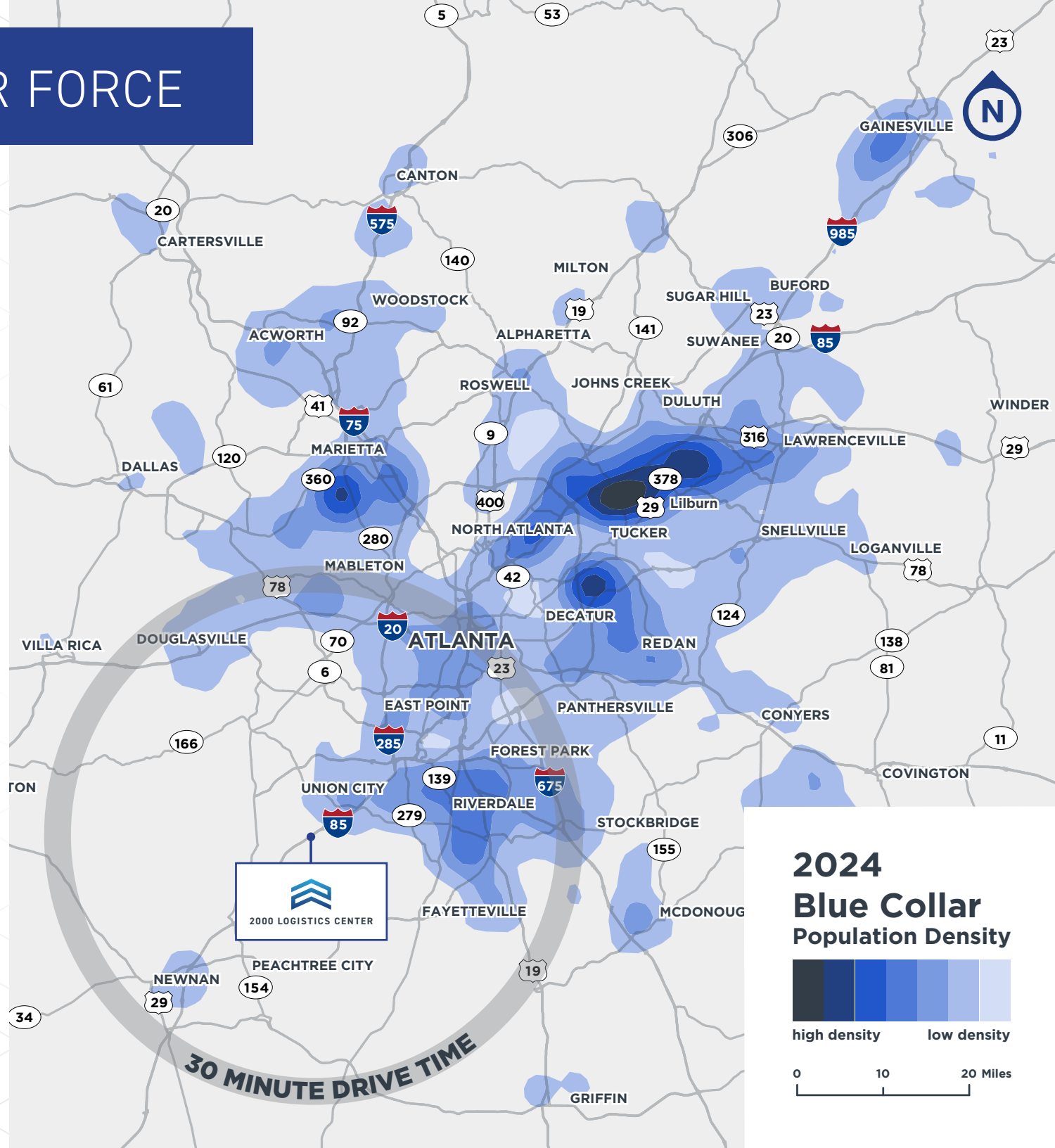
Unemployment Rate

**28.1%**

High School Educated

**45.7%**

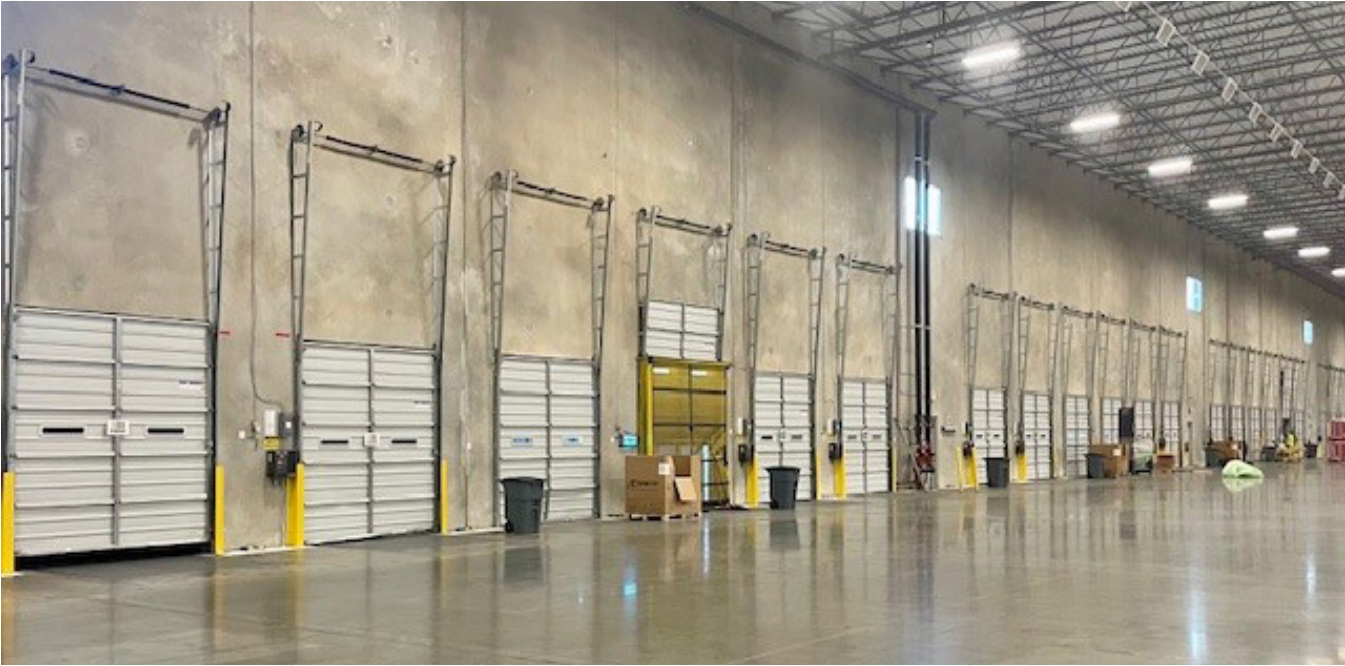
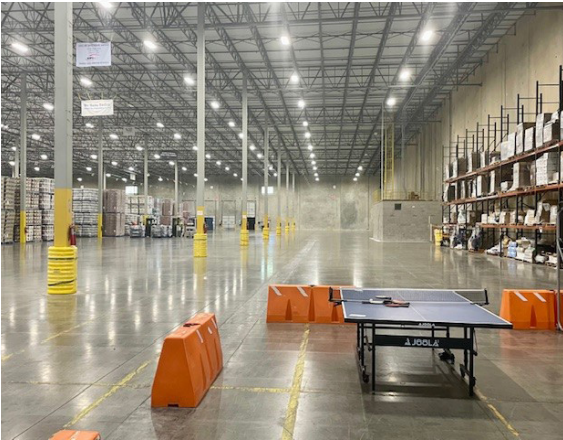
College Educated



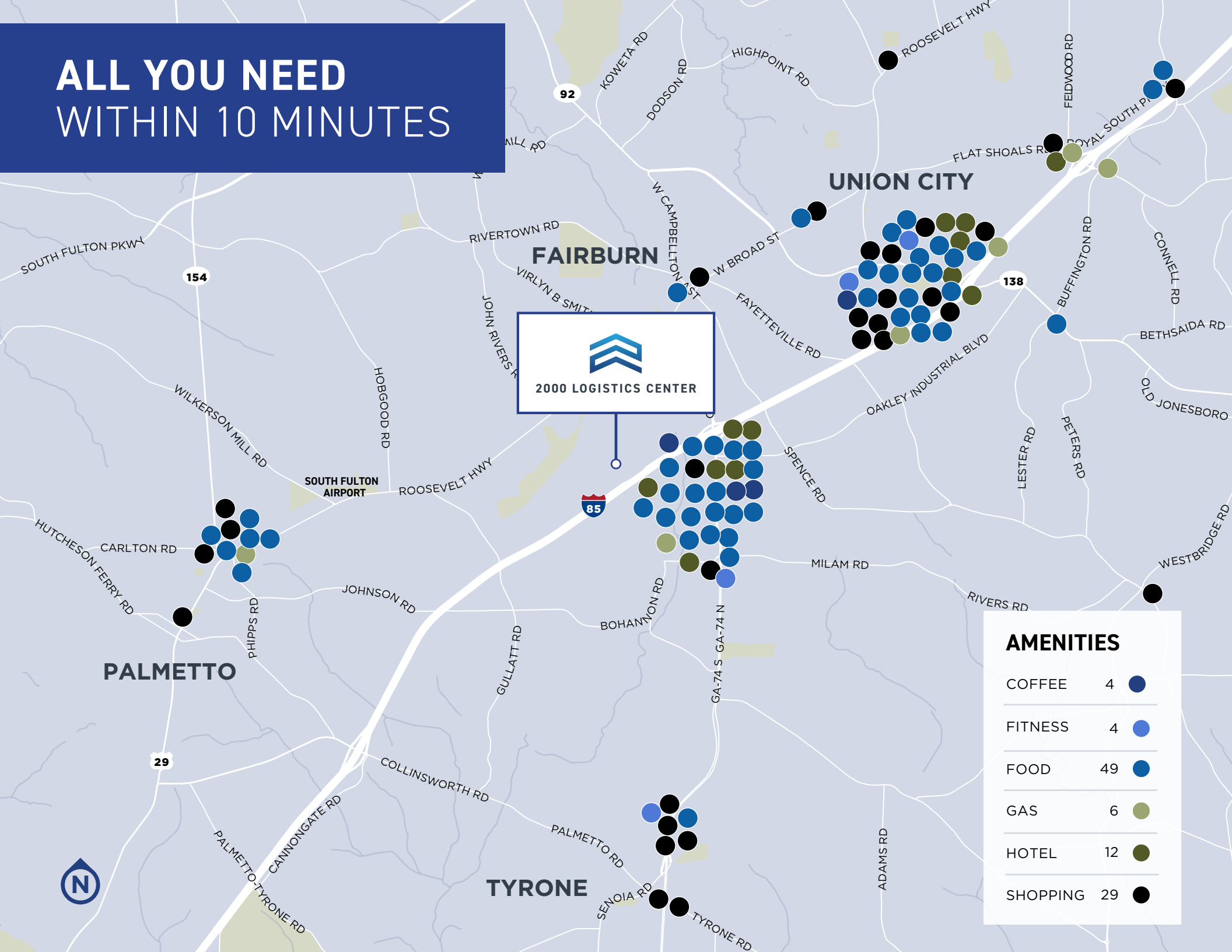
# INDUSTRIAL NEIGHBORS



# A LOOK INSIDE



# ALL YOU NEED WITHIN 10 MINUTES





## 2000 LOGISTICS CENTER

### FOR MORE INFORMATION, PLEASE CONTACT:

**LISA B. PITTMAN, SIOR**

Executive Director

+1 404 309 5309

[lisa.pittman@cushwake.com](mailto:lisa.pittman@cushwake.com)

**PAT MURPHY**

Managing Director

+1 770 853 8796

[pat.murphy@cushwake.com](mailto:pat.murphy@cushwake.com)

**ANDREW THURMAN**

Senior Associate

+1 404 682 3429

[andrew.thurman@cushwake.com](mailto:andrew.thurman@cushwake.com)

