

FOR SALE

4800 lamar ave.

MISSION, KS

YOUR
SIGN HERE

4800

15,108 SF Available





Asking price **\$1,750,000**
(\$115.83 SF).



Unique two-story 15,108 SF building situated in a natural park like setting



Property features an outdoor deck and seating area



With vaulted windows, the unique upper level features an abundance of natural light



Full kitchen on first floor with additional breakrooms on the second floor



Property can be easily demised for secondary user/tenant



Unique opportunity to purchase a property in Mission, KS



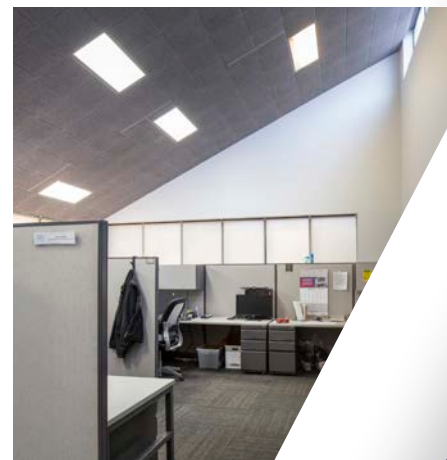
Existing furniture available to prospective buyers



Excellent highway access and abundant amenities within a 2-mile radius



Ample parking

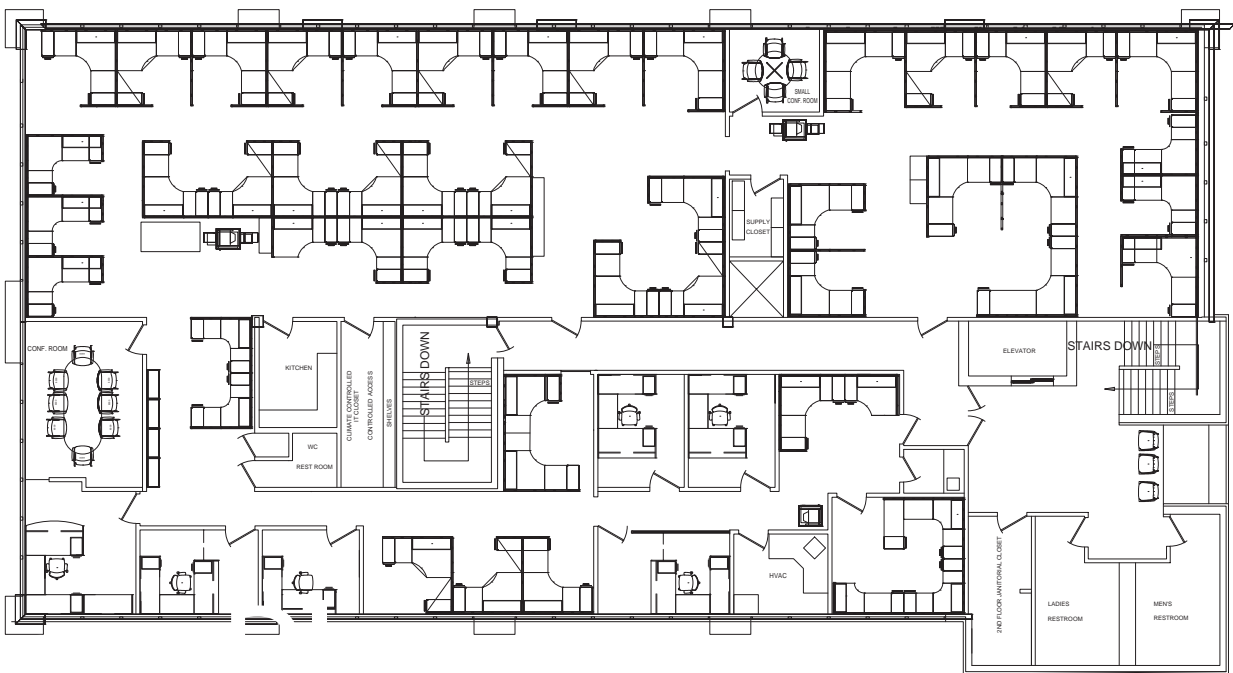


PROPERTY HIGHLIGHTS

first floor

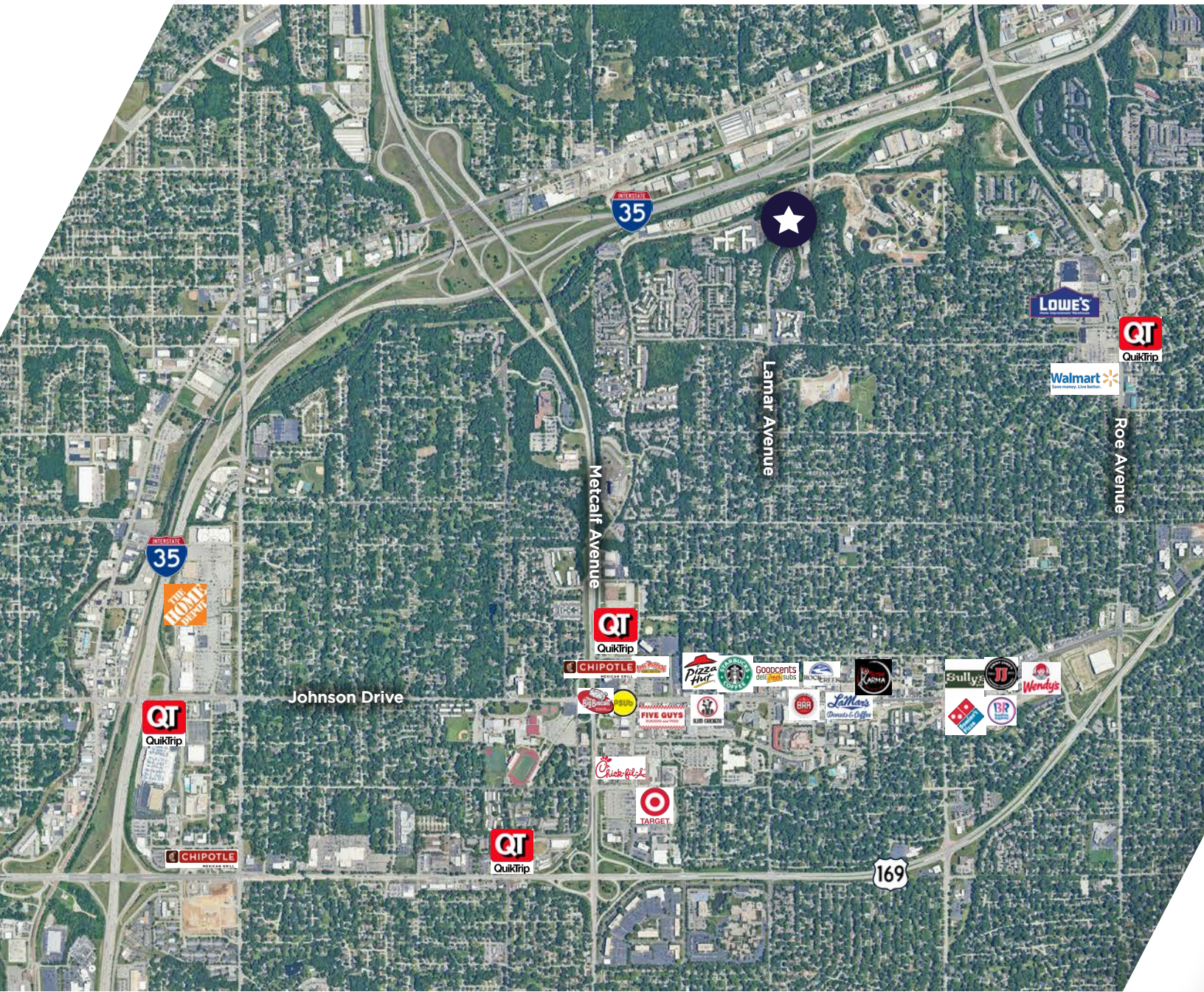


second floor

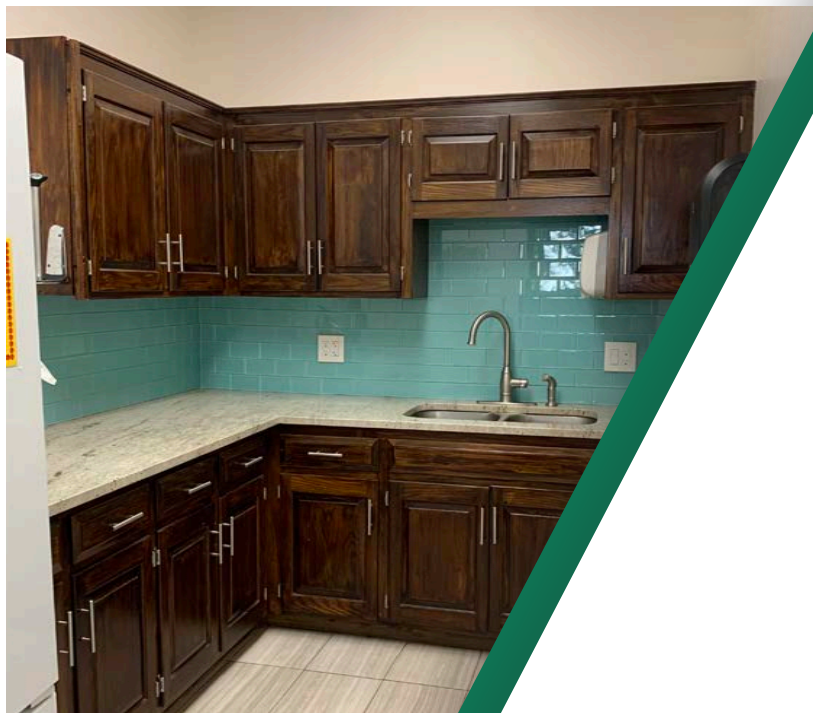
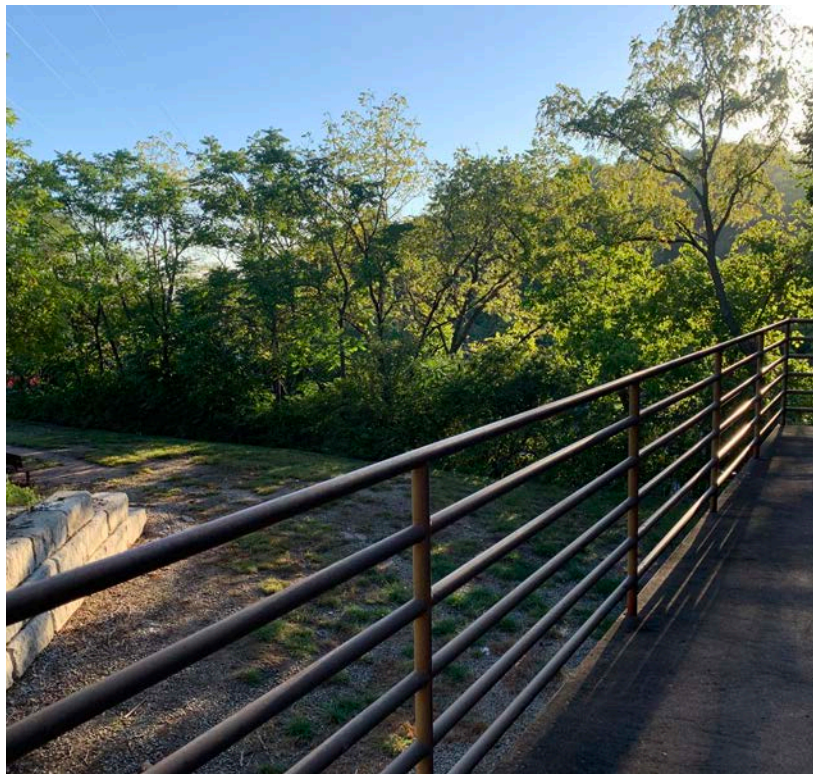




location MAP



nearby amenities



For more information, please contact:

Marty Gilchrist, CCIM
Senior Associate
+1 816 216 5655
marty.gilchrist@cushwake.com

Conor Twibell
Director
+1 816 412 0244
conor.twibell@cushwake.com

Michael T. Mayer
Executive Managing Director
+1 816 412 0241
mike.mayer@cushwake.com

4600 Madison Avenue, Suite 800, Kansas City, MO 64112 | +1 816 221 2200 | cushmanwakefield.com

©2024 Cushman & Wakefield. All rights reserved. The information contained in this communication is strictly confidential. This information has been obtained from sources believed to be reliable but has not been verified. NO WARRANTY OR REPRESENTATION, EXPRESS OR IMPLIED, IS MADE AS TO THE CONDITION OF THE PROPERTY (OR PROPERTIES) REFERENCED HEREIN OR AS TO THE ACCURACY OR COMPLETENESS OF THE INFORMATION CONTAINED HEREIN, AND SAME IS SUBMITTED SUBJECT TO ERRORS, OMISSIONS, CHANGE OF PRICE, RENTAL OR OTHER CONDITIONS, WITHDRAWAL WITHOUT NOTICE, AND TO ANY SPECIAL LISTING CONDITIONS IMPOSED BY THE PROPERTY OWNER(S). ANY PROJECTIONS, OPINIONS OR ESTIMATES ARE SUBJECT TO UNCERTAINTY AND DO NOT SIGNIFY CURRENT OR FUTURE PROPERTY PERFORMANCE.

