

FOR LEASE

ANTELOPE ROAD

CITRUS HEIGHTS, CA 95621

KEVIN GOLDTHWAITE

Director

+1 916 403 1818

kevin.goldthwaite@cushwake.com

CA LIC #01911862

SPENCER NIELSEN

Senior Associate

+1 916 288 4531

spencer.nielsen@cushwake.com

CA LIC #01964163



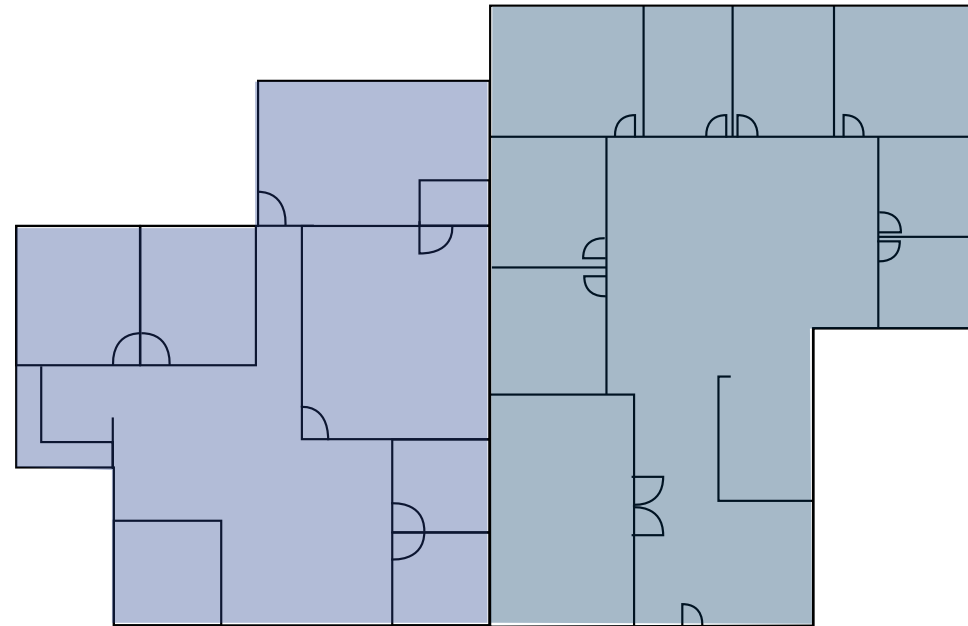
**CUSHMAN &
WAKEFIELD**

7447 ANTELOPE ROAD

FOR LEASE
ROAD

PROPERTY HIGHLIGHTS

- Suite 102 measures ±1,598 RSF
- Suite 103 measures ±2,400 RSF
- Suites are available within 30 days
- Suites 102 and 103 can combine for a total of ±3,998 RSF
- Move-in Ready
- Monument Signage Available
- On-site storage opportunities
- Close proximity to Interstate 80 and various retail amenities



Suite 102

Suite 103

CONTACT INFO

KEVIN GOLDTHWAITE
Director
+1 916 403 1818
kevin.goldthwaite@cushwake.com
CA LIC #01911862

SPENCER NIELSEN
Senior Associate
+1 916 288 4531
spencer.nielsen@cushwake.com
CA LIC #01964163

400 Capitol Mall, Suite 1800
Sacramento, CA 95814
+1 916 288 4800
cushmanwakefield.com



















7447 ANTELOPE RD.



ANTELOPE RD.

RUSCH PARK














AUBURN BLVD.

















PROPERTY PHOTOS

