

FOR SUBLEASE
801 S Figueroa Street
Los Angeles, CA 90017



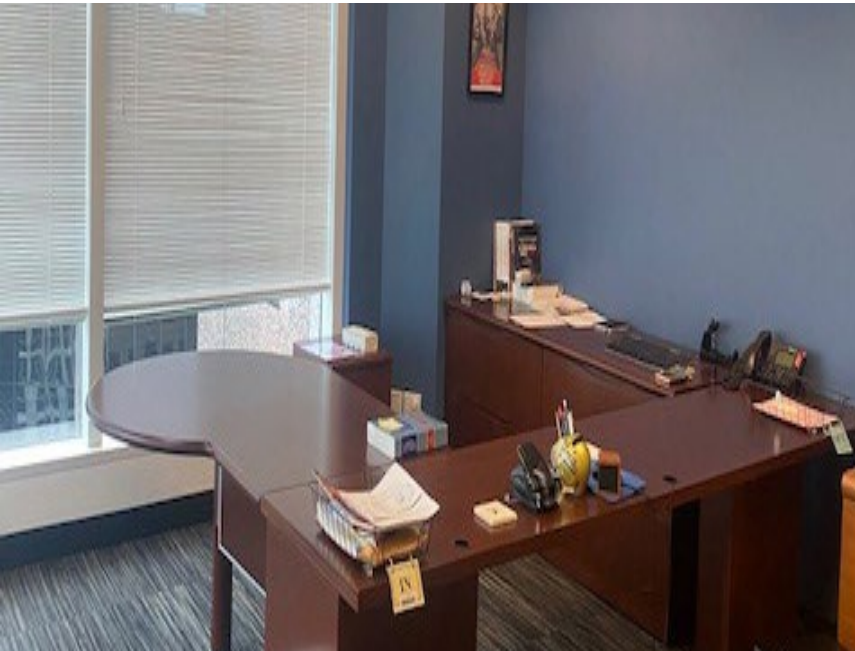
NEW TO MARKET HIGHLY EFFICIENT LAW FIRM SPACE

SPACE PROFILE

Size: **20,082 Rentable Square Feet**
Floor(s): **12th**
Rate: **Negotiable**
Availability: **Upon Landlord's Consent**
Term: **Through 9/30/2028**

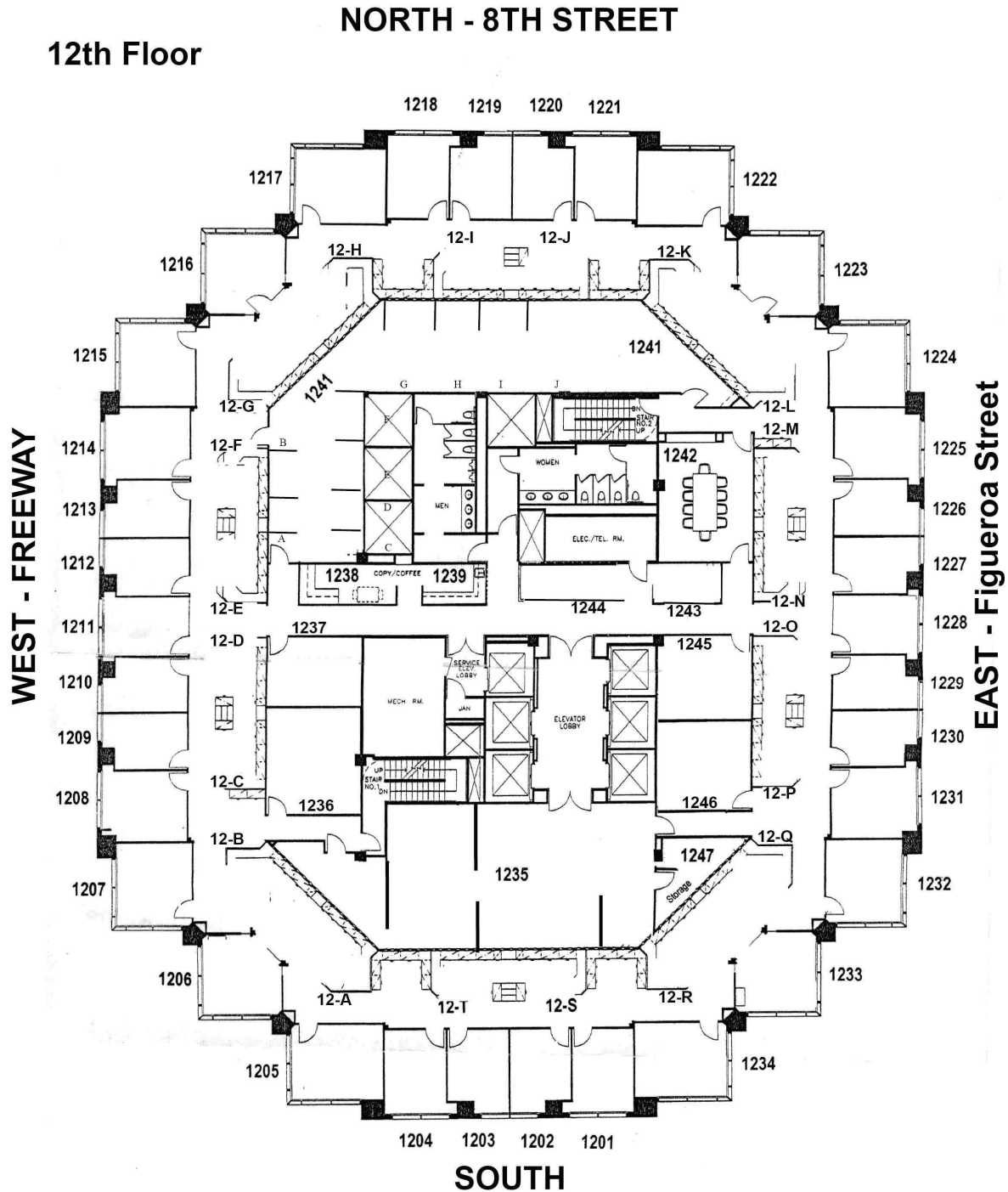
KEY HIGHLIGHTS

- Fully furnished, highly efficient law firm space
- Good outlooks and view corridors - plenty of natural light
- Highly efficient professional services floorplate: 8 corner offices per floor
- Full floor identity
- Proximity to many amenities



For more information, please contact:

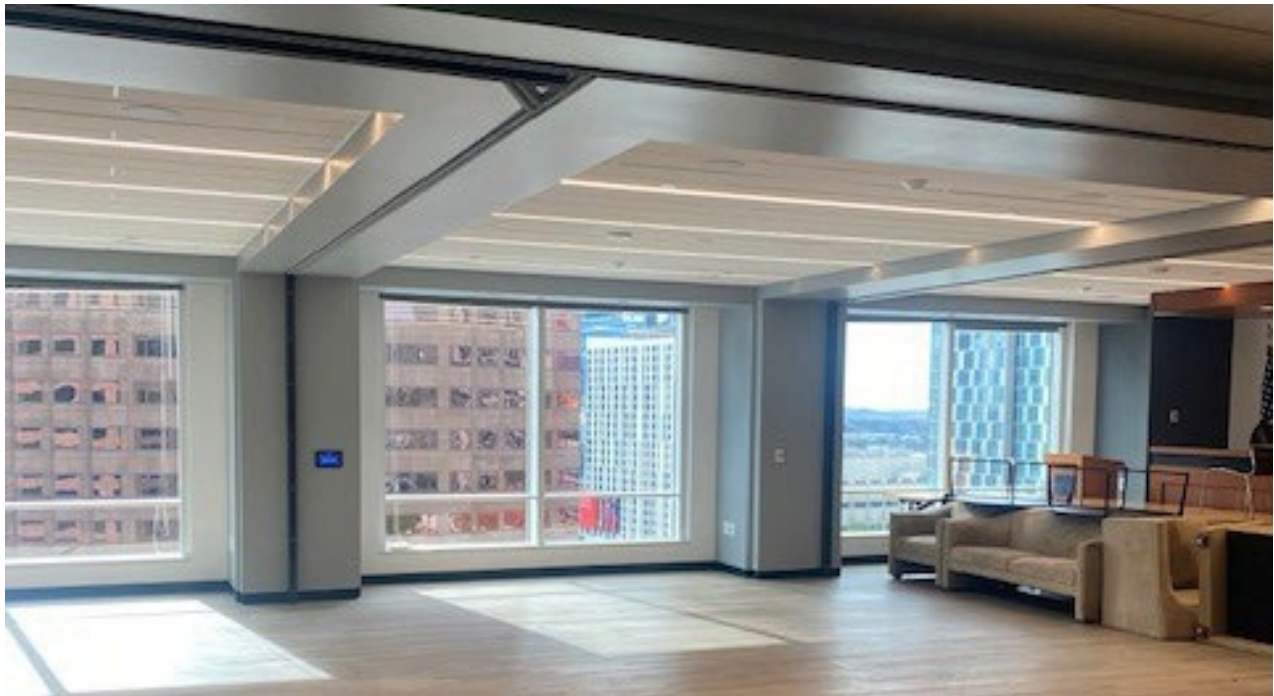
LUKE RAIMONDO
Executive Managing Director
+1 213 629 6523
luke.raimondo@cushwake.com
Lic. 01814454



For more information, please contact:

LUKE RAIMONDO
Executive Managing Director
+1 213 629 6523
luke.raimondo@cushwake.com
Lic. 01814454

FOR SUBLEASE
801 S Figueroa Street
Los Angeles, CA 90017

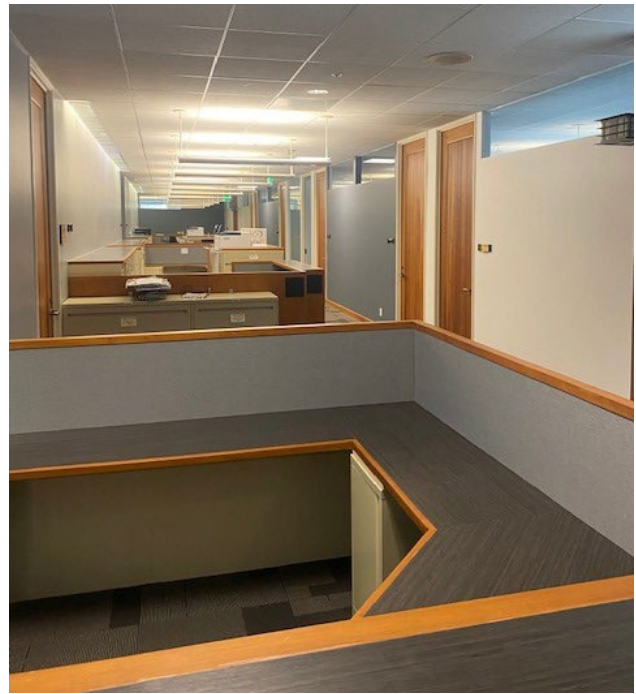
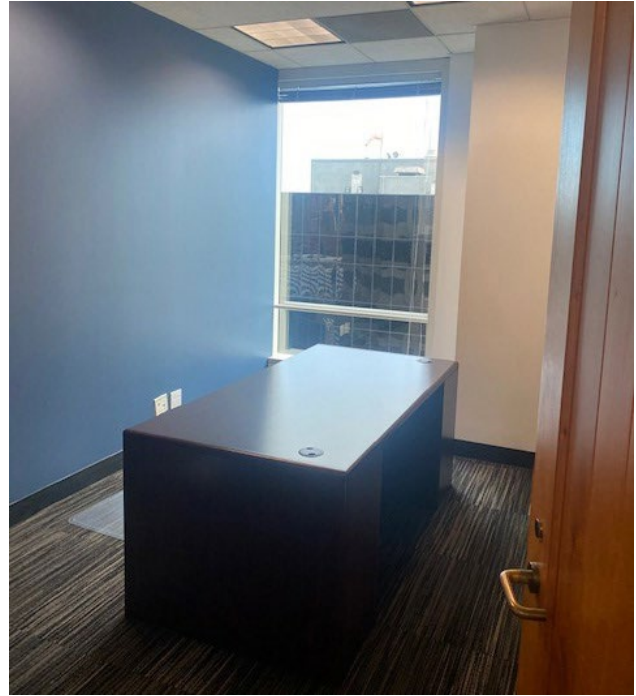


For more information, please contact:

LUKE RAIMONDO
Executive Managing Director
+1 213 629 6523
luke.raimondo@cushwake.com
Lic. 01814454

©2020 Cushman & Wakefield. All rights reserved. The information contained in this communication is strictly confidential. This information has been obtained from sources believed to be reliable but has not been verified. No warranty or representation, express or implied, is made as to the condition of the property (or properties) referenced herein or as to the accuracy or completeness of the information contained herein, and same is submitted subject to errors, omissions, change of price, rental or other conditions, withdrawal without notice, and to any special listing conditions imposed by the property owner(s). Any projections, opinions or estimates are subject to uncertainty and do not signify current or future property performance.

FOR SUBLEASE
801 S Figueroa Street
Los Angeles, CA 90017



For more information, please contact:

LUKE RAIMONDO
Executive Managing Director
+1 213 629 6523
luke.raimondo@cushwake.com
Lic. 01814454