

FOR SUB LEASE

Brunswig Square

360 E 2nd Street, Los Angeles, CA



CUSHMAN &
WAKEFIELD

OUTSTANDING CREATIVE SPACE



SPACE PROFILE

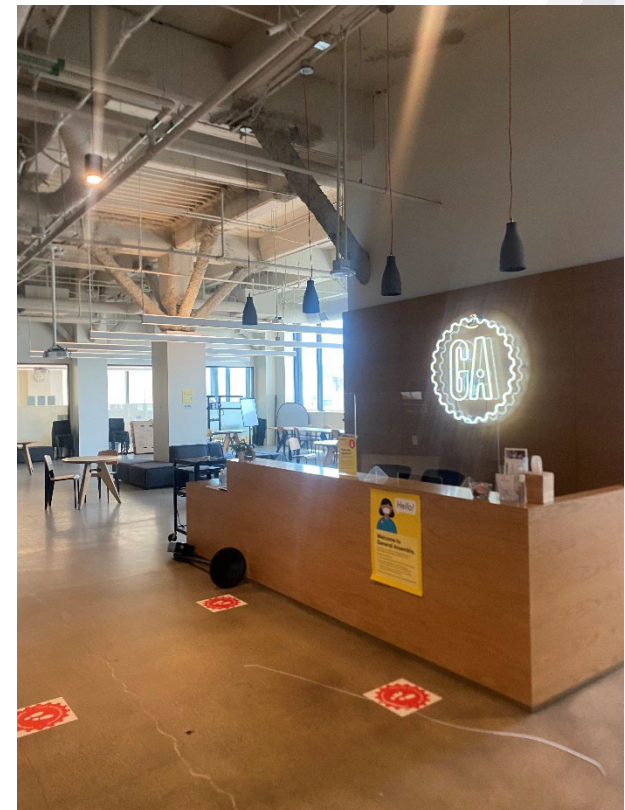
Size: **10,156 Rentable Square Feet**
Floor(s): **4th**
Rate: **Negotiable**
Availability: **Upon Landlord's Consent**
Term: **Through 9/30/2032**

KEY HIGHLIGHTS

- Central Downtown Los Angeles location
- Creative office space
- Originally built out as creative classroom space but could work well for a variety of open plan users
- Furniture may be available
- Proximity to many amenities

Contact

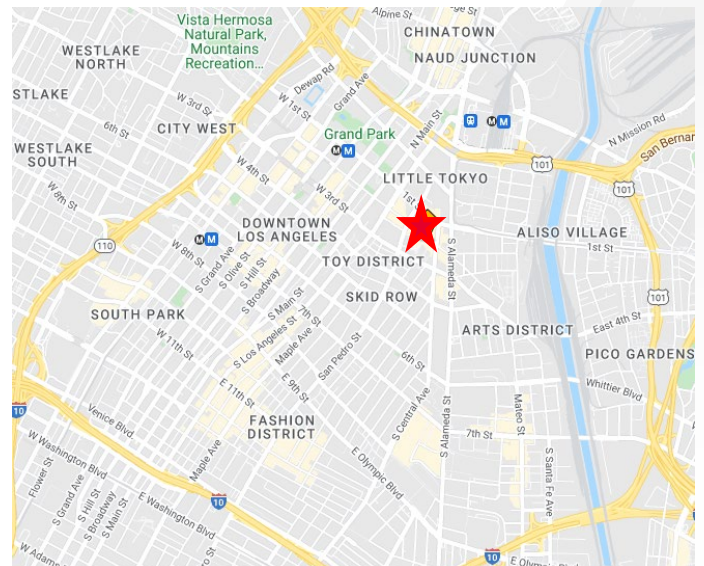
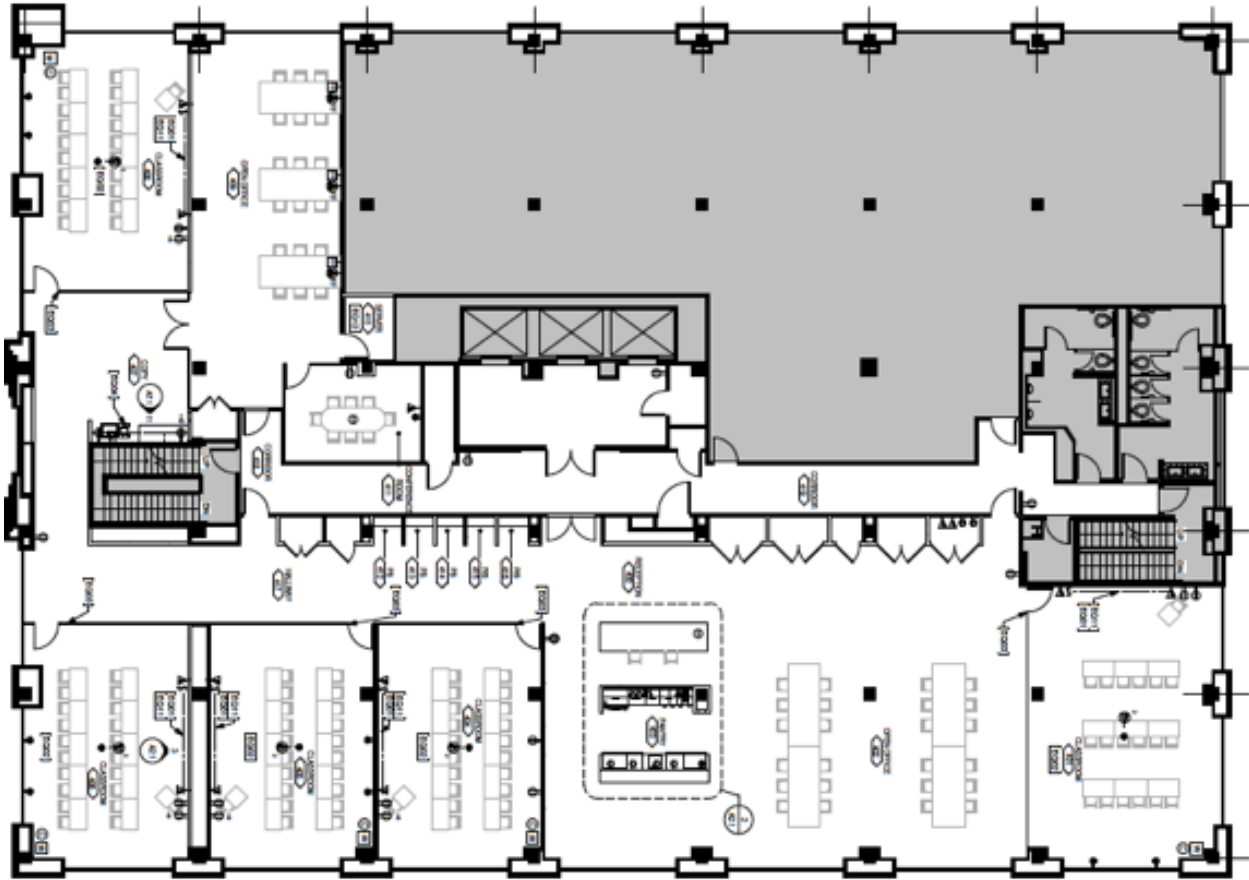
LUKE RAIMONDO
Executive Managing Director
+ 213 629 6523
luke.raimondo@cushwake.com



FOR SUB LEASE
Brunswig Square
360 E 2nd Street, Los Angeles, CA



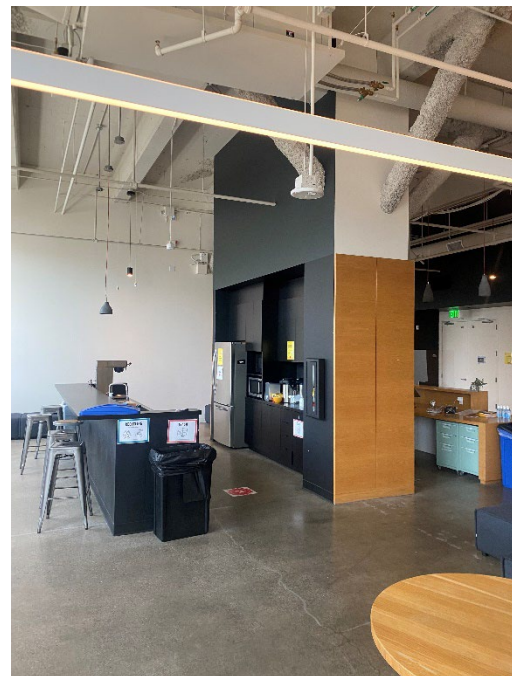
4th FLOOR
10,156 sf



Contact

LUKE RAIMONDO
Executive Managing Director
+ 213 629 6523
luke.raimondo@cushwake.com

FOR SUB LEASE
Brunswig Square
360 E 2nd Street, Los Angeles, CA



Contact

LUKE RAIMONDO
Executive Managing Director
+ 213 629 6523
luke.raimondo@cushwake.com