

**FOR LEASE**

**Northwoods Atlanta**

**3140 Northwoods Parkway, Norcross, GA 30071**



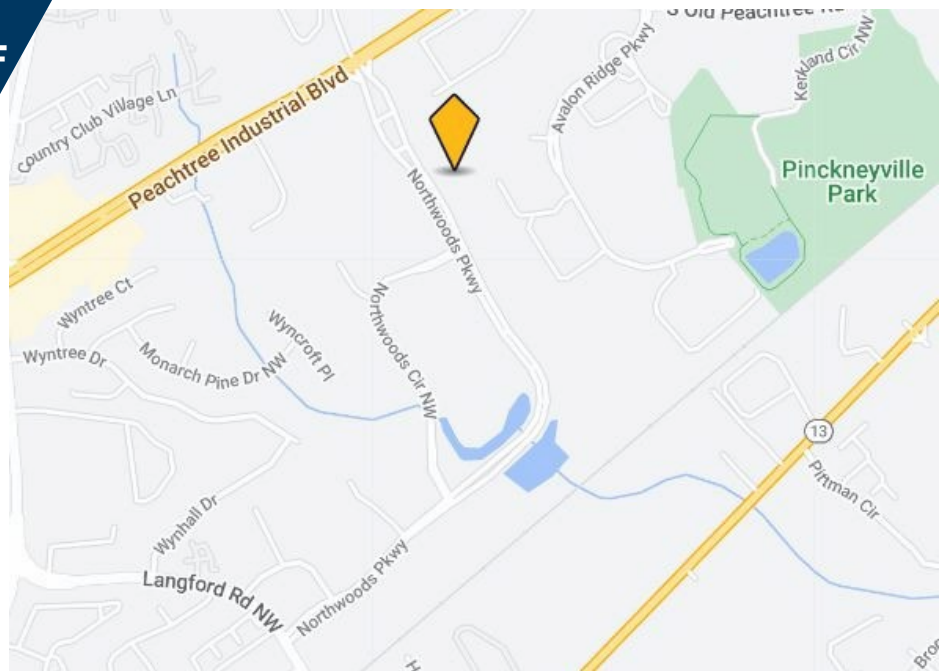
**Available 4/1/2023**



**Suite 500 & 700 14,414 – 50,462 SF**

**PROPERTY HIGHLIGHTS**

- 50% office/50% warehouse
- 24' Clear Height
- 10 Dock High Doors
- 2 Drive-In Doors
- Built in 2000



For more information, contact:

**Andrew Thurman**  
Senior Associate  
+1 404 682 3429  
[andrew.thurman@cushwake.com](mailto:andrew.thurman@cushwake.com)

**Pat Murphy**  
Managing Director  
+1 404 682 3405  
[pat.murphy@cushwake.com](mailto:pat.murphy@cushwake.com)

**Tara Healy**  
Director  
+1 404 682 3430  
[tara.healy@cushwake.com](mailto:tara.healy@cushwake.com)

©2021 Cushman & Wakefield. All rights reserved. The information contained in this communication is strictly confidential. This information has been obtained from sources believed to be reliable but has not been verified. No warranty or representation, express or implied, is made as to the condition of the property (or properties) referenced herein or as to the accuracy or completeness of the information contained herein, and same is submitted subject to errors, omissions, change of price, rental or other conditions, withdrawal without notice, and to any special listing conditions imposed by the property owner(s). Any projections, opinions or estimates are subject to uncertainty and do not signify current or future property performance.

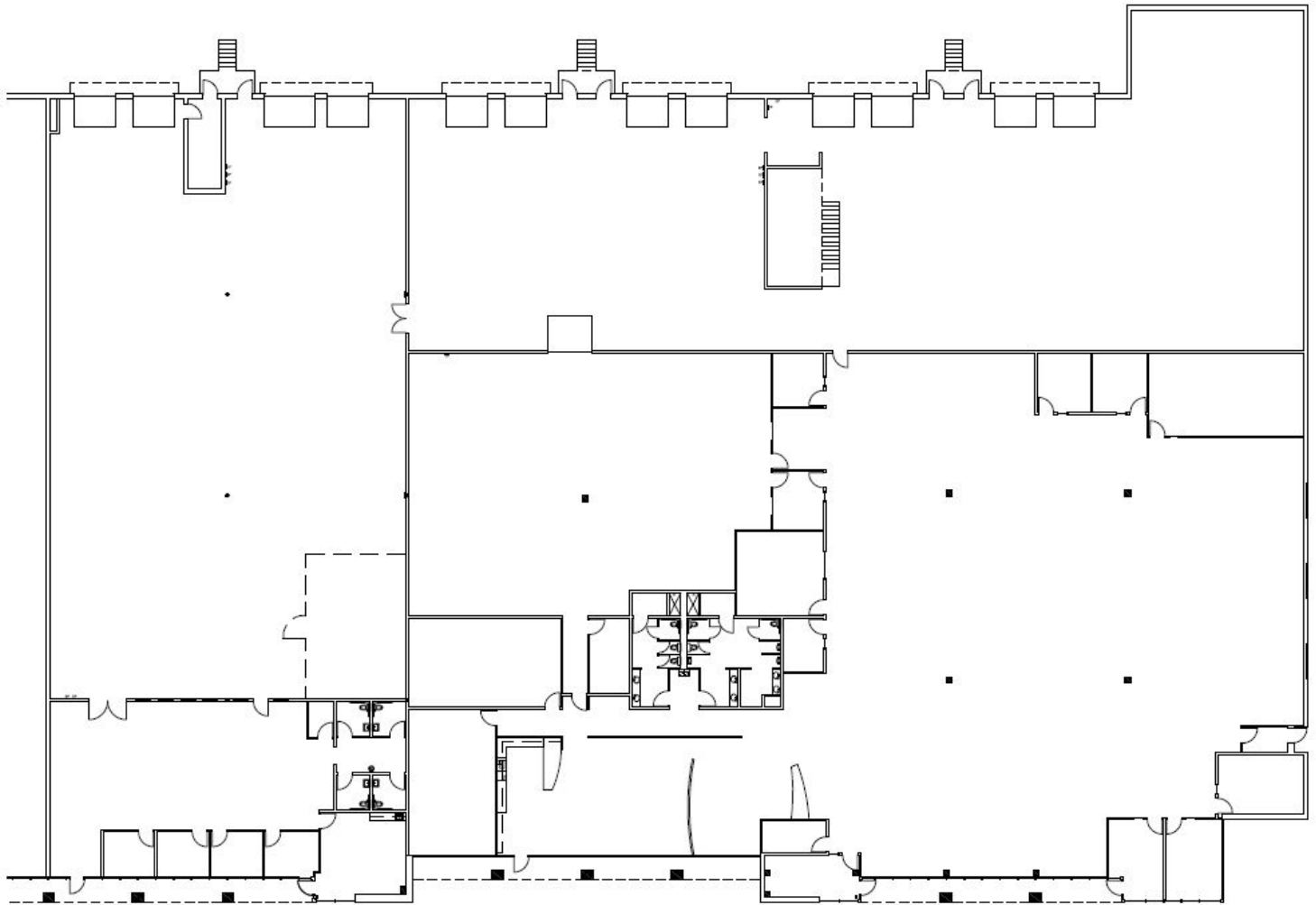
**FOR LEASE**

**Northwoods Atlanta**

**3140 Northwoods Parkway, Norcross, GA 30071**



**FLOOR PLAN Suite 500 & 700 – 50,462 SF**



Owned by:  
**mapletree**

Mapletree is a leading global real estate developer, investor and manager headquartered in Singapore. Mapletree owns and manages more than 70 million square feet of logistics and industrial properties across 27 states with offices in New York, Chicago, Atlanta, Dallas and Los Angeles. [www.mapletree.com.sg](http://www.mapletree.com.sg)

For more information, contact:

**Andrew Thurman**  
Senior Associate  
+1 404 682 3429  
[andrew.thurman@cushwake.com](mailto:andrew.thurman@cushwake.com)

**Pat Murphy**  
Managing Director  
+1 404 682 3405  
[pat.murphy@cushwake.com](mailto:pat.murphy@cushwake.com)

**Tara Healy**  
Director  
+1 404 682 3430  
[tara.healy@cushwake.com](mailto:tara.healy@cushwake.com)

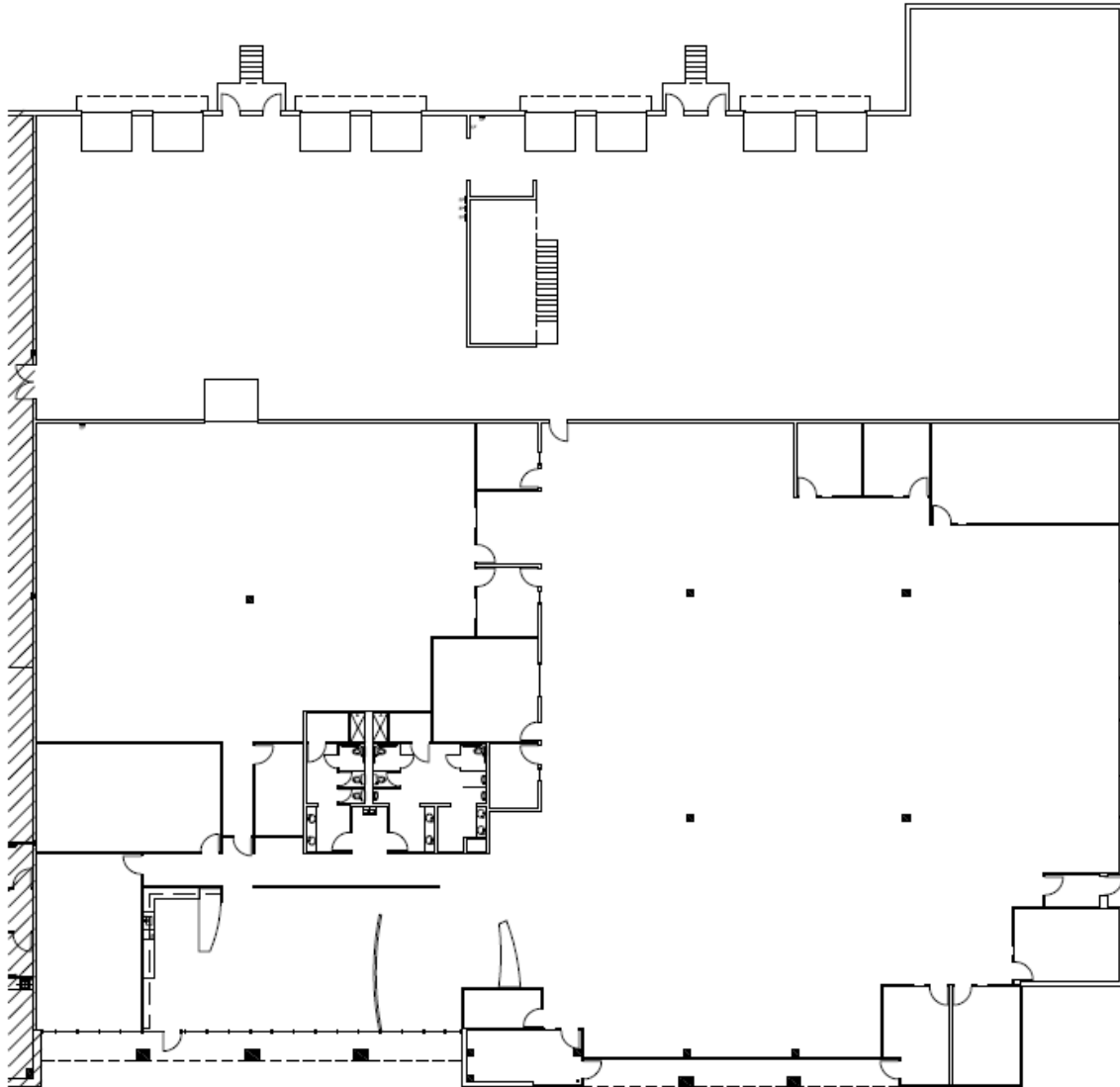
**FOR LEASE**

**Northwoods Atlanta**

**3140 Northwoods Parkway, Norcross, GA 30071**



**FLOOR PLAN Suite 700 – 36,048 SF**



**Owned by:**



Mapletree is a leading global real estate developer, investor and manager headquartered in Singapore. Mapletree owns and manages more than 70 million square feet of logistics and industrial properties across 27 states with offices in New York, Chicago, Atlanta, Dallas and Los Angeles. [www.mapletree.com.sg](http://www.mapletree.com.sg)

For more information, contact:

**Andrew Thurman**  
Senior Associate  
+1 404 682 3429  
[andrew.thurman@cushwake.com](mailto:andrew.thurman@cushwake.com)

**Pat Murphy**  
Managing Director  
+1 404 682 3405  
[pat.murphy@cushwake.com](mailto:pat.murphy@cushwake.com)

**Tara Healy**  
Director  
+1 404 682 3430  
[tara.healy@cushwake.com](mailto:tara.healy@cushwake.com)

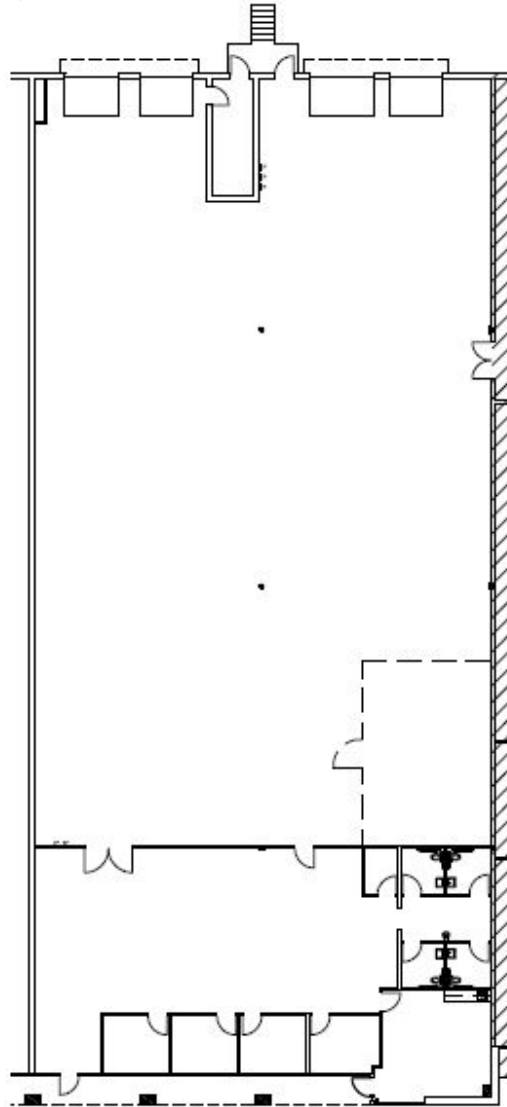
**FOR LEASE**

**Northwoods Atlanta**

**3140 Northwoods Parkway, Norcross, GA 30071**



**FLOOR PLAN Suite 500 – 14,414 SF**



**Owned by:**

**mapletree**

Mapletree is a leading global real estate developer, investor and manager headquartered in Singapore. Mapletree owns and manages more than 70 million square feet of logistics and industrial properties across 27 states with offices in New York, Chicago, Atlanta, Dallas and Los Angeles. [www.mapletree.com.sg](http://www.mapletree.com.sg)

For more information, contact:

**Andrew Thurman**

Senior Associate

+1 404 682 3429

[andrew.thurman@cushwake.com](mailto:andrew.thurman@cushwake.com)

**Pat Murphy**

Managing Director

+1 404 682 3405

[pat.murphy@cushwake.com](mailto:pat.murphy@cushwake.com)

**Tara Healy**

Director

+1 404 682 3430

[tara.healy@cushwake.com](mailto:tara.healy@cushwake.com)