

# TRADELANE AIRPORT CENTER – HOUSTON

19245 KENSWICK DRIVE, SUITE 200

HUMBLE, TX 77338

BUILDING 2

**FOR LEASE**

**24,960 SF**

## LOCATION HIGHLIGHTS:

- Adjacent to George Bush International Airport (IAH)
- Access to Major Thoroughfares, including I-69, I-45, Beltway 8, and FM 1960.
- Desirable Location for Air Cargo Users

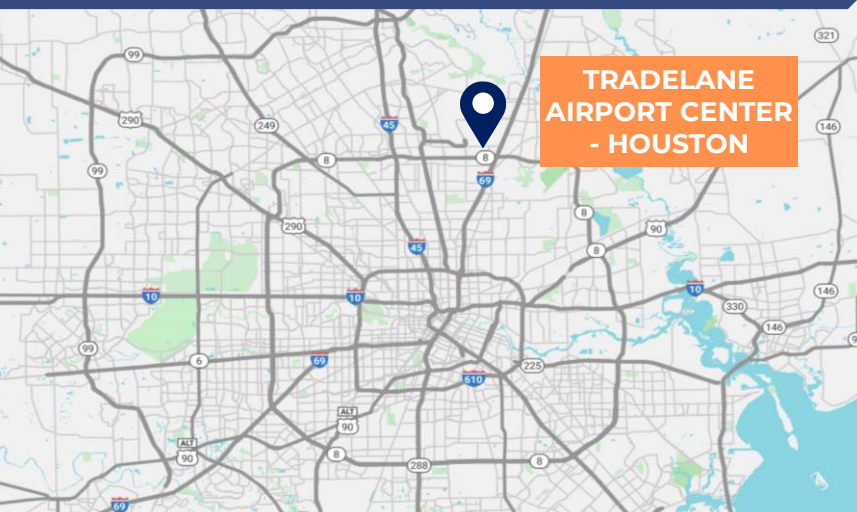
## SPACE FEATURES

### 24,960 SF AVAILABLE

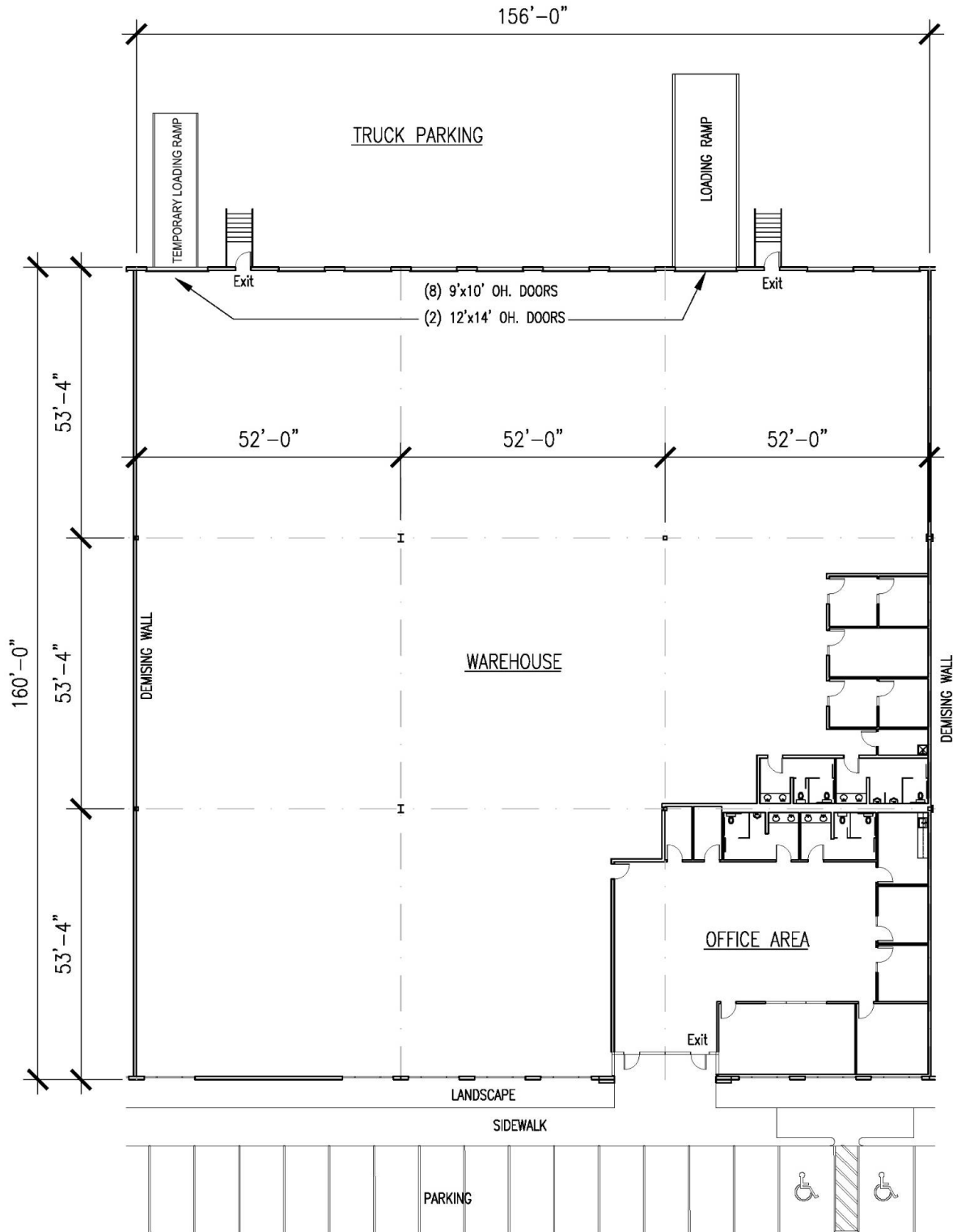
- 4,185 SF Office
- 20,775 SF Warehouse

### UNIT FEATURES

- (8) 9'x10' Dock High Doors
- (2) 12'x14' Drive-In Ramp
- 52' x 53'-4" Column Spacing
- 24' Clear Height
- ESFR Sprinkler System
- Rear Load Configuration
- Ample Parking
- Fenced Truck Court / Paved Outside Storage

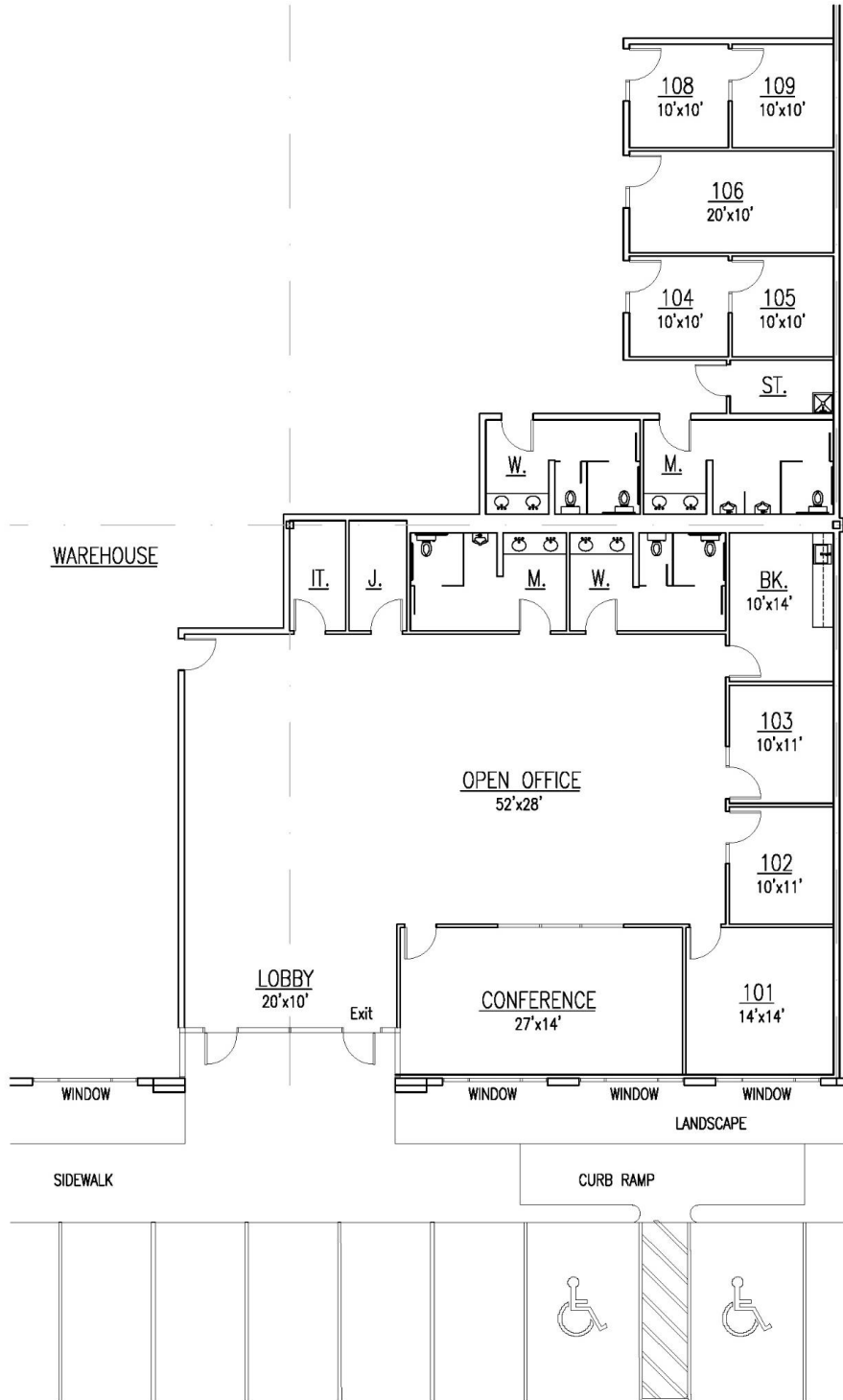


**24,960 SF FLOOR PLAN**





**4,185 SF OFFICE**





## CONTACT US

**JOHN KRUSE**  
MANAGING DIRECTOR  
+1 713 304 4919  
john.kruse@cushwake.com

**CARTER HOLMES**  
SENIOR ASSOCIATE  
+1 713 417 5447  
carter.holmes@cushwake.com

**KELLY LANDWERMEYER**  
MANAGING DIRECTOR  
+1 713 249 4295  
kelly.landwermeier@cushwake.com



## CONTACT US

**JOHN KRUSE**  
MANAGING DIRECTOR  
+1 713 304 4919  
john.kruse@cushwake.com

**CARTER HOLMES**  
SENIOR ASSOCIATE  
+1 713 417 5447  
carter.holmes@cushwake.com

**KELLY LANDWERMEYER**  
MANAGING DIRECTOR  
+1 713 249 4295  
kelly.landwermeier@cushwake.com