



**FOR SALE**



**±12.68 ACRES**

E. 250 N  
Kokomo, IN

**PROPERTY HIGHLIGHTS**

12.68 Acres

Zoned AG

Adjacent to US-31

5 miles from Kokomo City Center

1 mile from the new Stellantis plant

Asking \$72,000/acre



**MATT KITE, J.D.**

Director  
+1 317 616 3981  
matt.kite@cushwake.com

**BO LEFFEL**

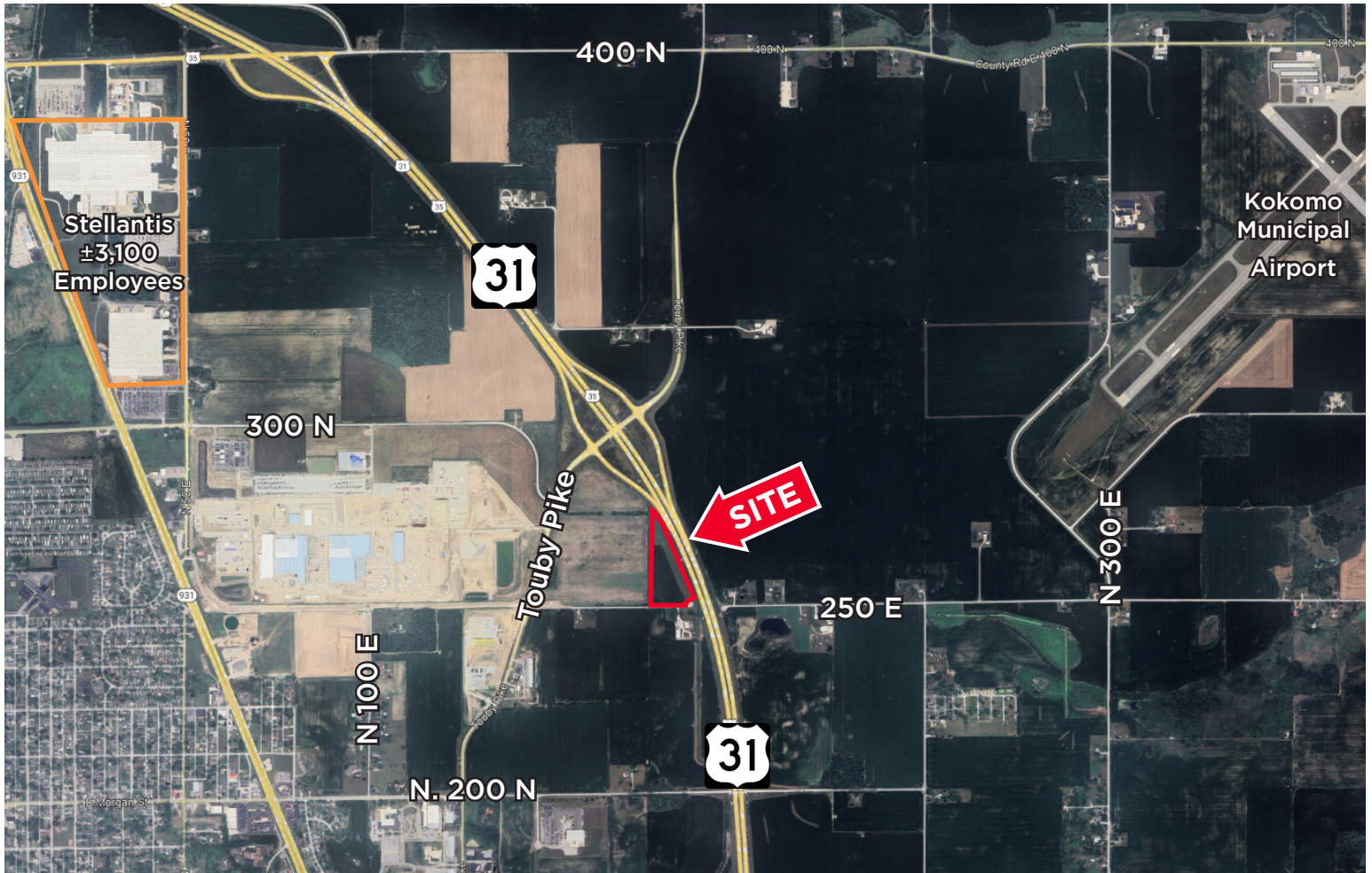
Vice Chair  
+1 317 639 0441  
bo.leffel@cushwake.com

One American Square, Suite 1800 | Indianapolis, IN 46282  
Main +1 317 639 0515 | Fax +1 317 639 0504  
cushmanwakefield.com

©2024 Cushman & Wakefield. All rights reserved. The information contained in this communication is strictly confidential. This information has been obtained from sources believed to be reliable but has not been verified. No warranty or representation, express or implied, is made as to the condition of the property (or properties) referenced herein or as to the accuracy or completeness of the information contained herein, and same is submitted subject to errors, omissions, change of price, rental or other conditions, withdrawal without notice, and to any special listing conditions imposed by the property owner(s). Any projections, opinions or estimates are subject to uncertainty and do not signify current or future property performance.

# ±12.68 ACRES

E. 250 N  
Kokomo, IN



## Demographics

	1 Mile	3 Mile	5 Mile
Population	80	17,667	47,805
AVG. HH Income	\$96,196	\$69,727	\$80,873
Daytime Population	99	15,354	43,220

## Traffic Counts

US 31 18,856 AADT

### MATT KITE, J.D.

Director  
+1 317 616 3981  
matt.kite@cushwake.com

### BO LEFFEL

Vice Chair  
+1 317 6639 0441  
bo.leffel@cushwake.com

One American Square, Suite 1800  
Indianapolis, IN 46282  
Main +1 317 639 0515  
Fax +1 317 639 0504  
**cushmanwakefield.com**