



**CUSHMAN &  
WAKEFIELD**

10,605 SF AVAILABLE

# 215 N. Peoria

Chicago, IL



**Jeffrey Skender**

+1 312 470 2325

[jeffrey.skender@cushwake.com](mailto:jeffrey.skender@cushwake.com)

**Jonathan Metzl**

+1 312 871 5016

[jonathan.metzl@cushwake.com](mailto:jonathan.metzl@cushwake.com)

# SPACE HIGHLIGHTS

## Size

10,605 RSF

## Floor

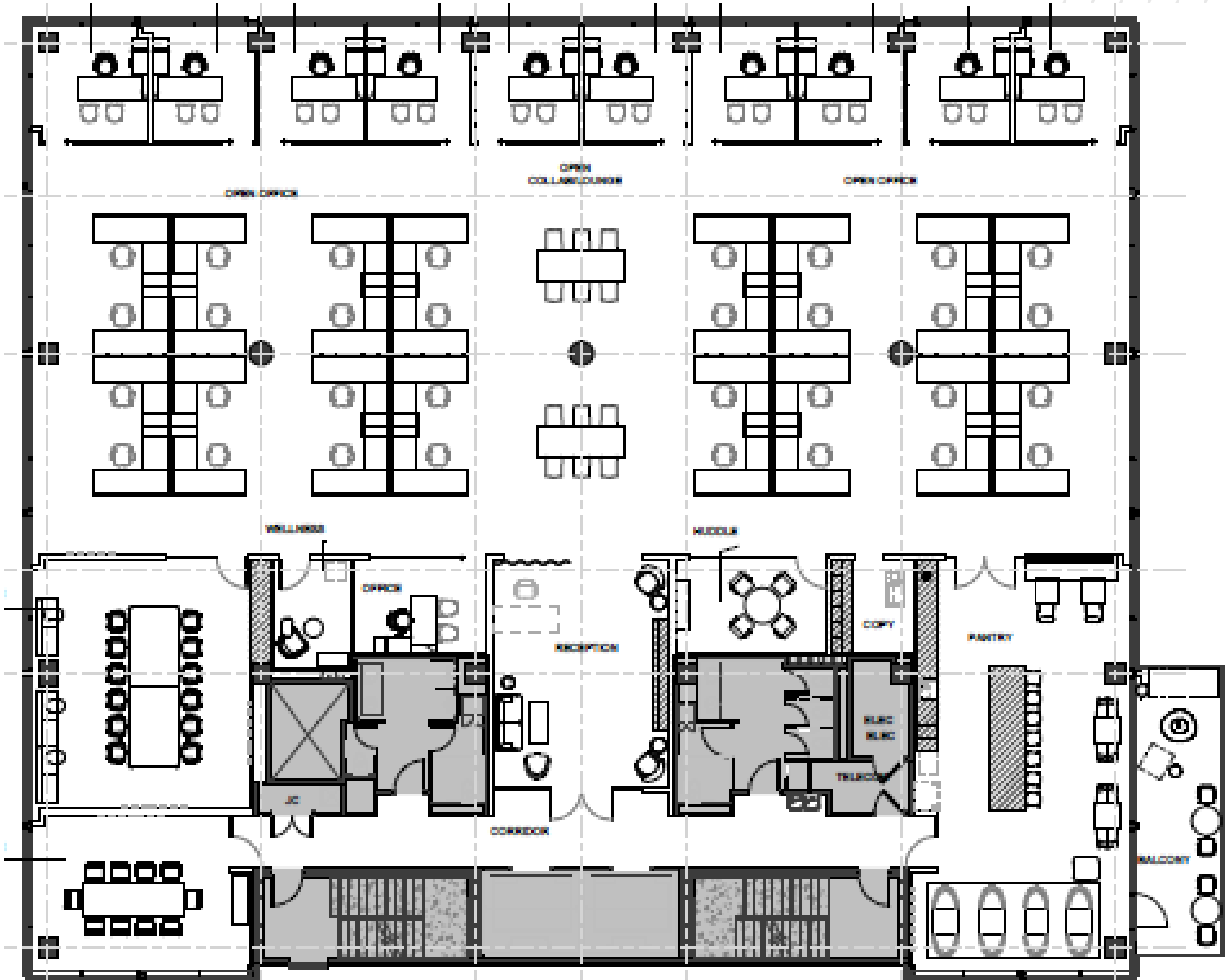
5

## Available

January 1, 2025

## Term

3 Years



*\*\*space currently under construction\*\**



# SPACE HIGHLIGHTS

## Size

10,605 RSF

## Floor

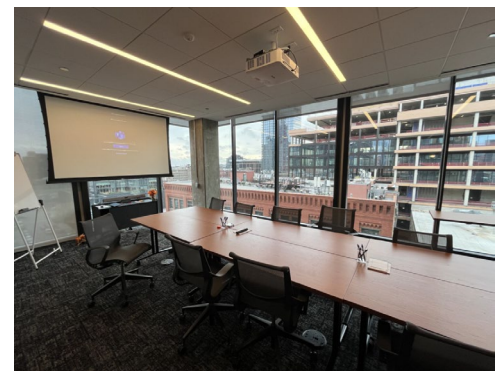
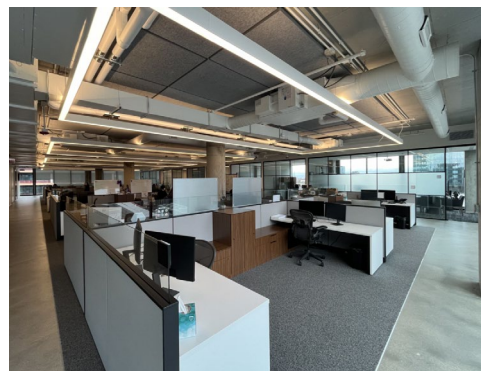
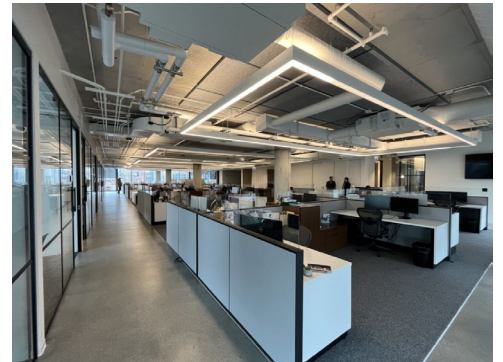
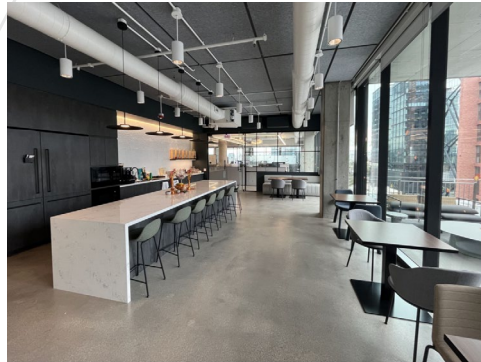
5

## Available

January 1, 2025

## Term

3 Years



**\*\*sublease space currently under construction; interior pictures representative of deliverable conditions to subtenant\*\***