

Medical & Office Sublease

9582 WEST COLONIAL DRIVE | ORLANDO | FL

- CLOSE PROXIMITY TO ORLANDO HEALTH'S HEALTH CENTRAL HOSPITAL
- MOVE-IN READY OFFICE SPACE
- MOVE-IN READY MEDICAL SPACE



COLIN MORRISON
Director
Office Brokerage Services
407 541 4415
colin.morrison@cushwake.com

TODD DAVIS, SIOR, CCIM
Senior Director
Office Brokerage Services
407 541 4412
todd.a.davis@cushwake.com

ROBERT KELLOGG, CCIM
Senior Director
Office Brokerage Services
407 541 4416
robert.kellogg@cushwake.com



FLOOR PLAN

AVAILABLE 4,850 - 9,700± SF

LOCATION

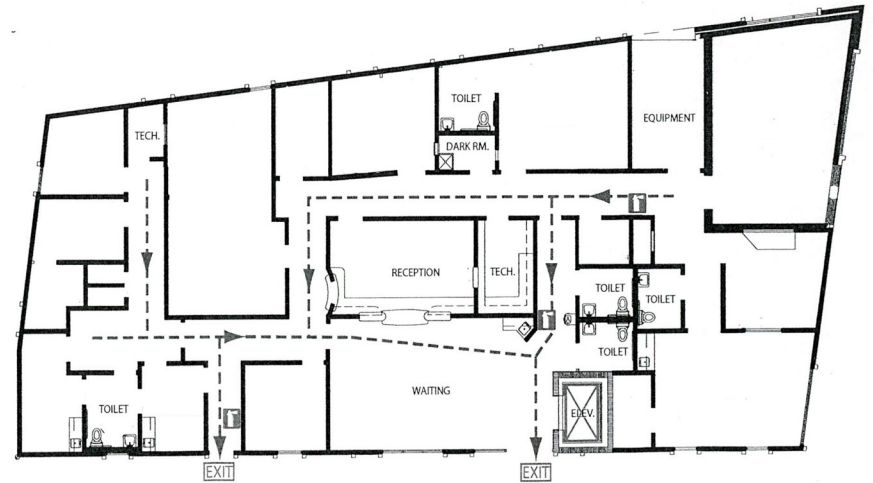
Located on West Colonial Drive (SR50) providing unmatched proximity to Orlando Health - Health Central Hospital as well as surrounding restaurants, retail, and entertainment options. Accessibility is outstanding as SR 408, SR 429 and Florida's Turnpike are within a 5 minute drive time.

THE SPACE

- Plug-and-Play medical or office space
- 40 dedicated parking spaces
- Building and monument signage available
- Sublease total 9,700 SF or 4,850 SF

First Floor (Medical)

4,850± SF



Second Floor (Office)

4,850± SF

